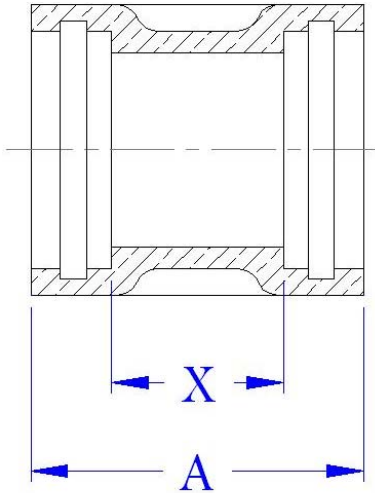


COUPLINGS

FIG. 5150

GROOVED FOR BRAZING RINGS



- GROOVED
- Fig. 5150 - FF X FF
- Fig. 5151 - FF X FEM
- Fig. 5153 - SLIP

- FACE FED
- Fig. 5050 - FF X FF
- Fig. 5051 - FF X FEM



^ CONSULT FACTORY / * INDICATES TYPE A

ALL DIMENSIONS IN INCHES

FIG	SIZE CODE	IPS	A	B	C	X	Y	Z	WEIGHT
5150	020	1/8	31/32	-	-	7/16	-	-	-
5150	040	*1/4	31/32	-	-	7/16	-	-	0.09
5150	060	*3/8	1-1/16	-	-	7/16	-	-	0.114
5150	100	*1/2	1-9/32	-	-	17/32	-	-	0.15
5150	150	*3/4	1-7/16	-	-	5/8	-	-	0.267
5150	200	*1	1-11/16	-	-	13/16	-	-	0.379
5150	250	*1-1/4	1-7/8	-	-	7/8	-	-	0.589
5150	300	*1-1/2	1-29/32	-	-	21/32	-	-	0.7087
5150	400	*2	2-3/16	-	-	7/8	-	-	1.1216
5150	450	*2-1/2	2-7/8	-	-	1-5/16	-	-	2.3333
5150	500	*3	3-3/16	-	-	1-17/32	-	-	2.85
5150	550	*3-1/2	3-7/16	-	-	1-11/16	-	-	3.48
5150	600	*4	3-11/16	-	-	1-7/8	-	-	4.756
5150	650	*5	4-7/32	-	-	2-7/32	-	-	8.44
5150	700	*6	4-3/4	-	-	2-17/32	-	-	14.85
5150	800	*10	6-1/2	-	-	3-1/2	-	-	38.25
5150	820	*12	7	-	-	3-3/4	-	-	56.75