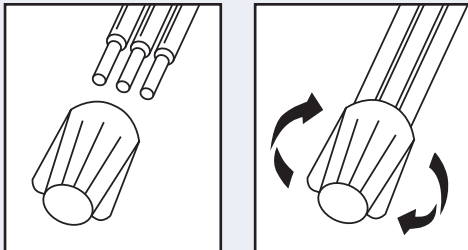




Installation Instructions

IMPORTANT: Turn off power before installing or removing connector.
Product to be used in accordance with local and national codes.

1. Strip #22-18 wires 1/2" and #16-12 wires 3/8".
2. Align frayed strands or conductors.
3. Do not pre-twist. Place stripped wires together with ends even, but lead stranded wire slightly.
4. Twist connector onto wires pushing firmly until hand-tight. Do not over torque.
5. Swipe excess sealant in and around conductors. Do not reuse.



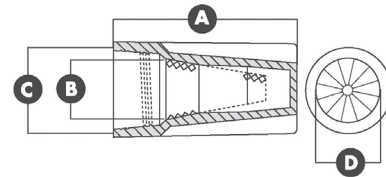
DryConn® Small Black/White

Catalog #	Selling Unit
61135	Bag of 25
61145	Bag of 100
61146	Canister of 150

PRODUCT SPECIFICATIONS & MEASUREMENTS

Max. Voltage: 300-600V (1,000V in fixtures and signs)
 Connector Size: 7/16" x 27/32"
 Wire Type: Copper/Copper
 Wire Range: Min #22/Max #12
 Temperature Rating: 105°C (221°F)
 Silicone Sealant: -45°F to 400°F
 UL Designation: KO

Measurements (Inches):
 A - 0.844 B - 0.250
 C - 0.438 D - 0.313



- UL 50 tested for watertight/raintight applications
- UL listed and CSA certified as a Pressure Type Connector

See reverse side for a complete listing of wire combinations.

Suitable for low voltage applications.

DryConn® Small Black/White

Filled Connectors For Outdoor/Irrigation Use

300V Wire Combinations

5 #18, 20 or 22	3 #16	1#12
4 #20 w/1 #22	3 #20 w/1-2 #22	2 #20 w/2-3 #22
1 #20 w/4 #22	4 #18 w/1, 20 or 22	2 #16 w/3 #20 or 22
2 #16 w/2 #18	2 #14 w/2 #22	2 #14 w/1 #18 or 20
1 #14 w/3 #18 or 20	1 #14 w/2 #16	3# 18 w/2 #20 or 22
2 #18 w/3 #22	3 #16 w/1 #18, 20, or 22	

600V Wire Combinations

3 or 4 #20 or 22	2-4 #18	2 #14 or 16
1 #12	2 #20 w/1-2 #22	1 #20 w/2-3 #22
3 #18w 1-2 #20 or 22	2 #18 w/ 1-3 #22	1 #18 w/3-4 #22
1 #18 w/ 1-4 #20	2 #16 w/ 1-3 #22	2 #16 w/1 or 2 #20 or 22
2 #16 w/ 1-2 #18	1 #16 w/ 1-4 #20 or 22	1 #16 w/1 #18 or 20
2 # 14 w/1 #22	1 # 14 w/ 2-4 #22	1 #14 w/ 1-3 #20
1 #14 w/1-2 #18 or 20	1 #14 w/1 #16 or 18	2 #18 w/1-2 # 20 or 22

Weights and Measures

Shelfpack Qty.	Part #	Wt.	W	H	L	Cube	Master Qty.	Weight	W	H	L	Cube	UPC 7-19362
10 bags	61135	1.20	5.50	5.63	3.75	0.0671	100	12.92	11.25	9.50	10.75	0.66	61135-8
1 bag	61145	0.39	0	0	0	0.0000	10	4.48	12	9	3	0.19	61145-7
6 canisters	61146	4.71	3.5	5.25	20.75	.22	N/A	N/A	N/A	N/A	N/A	N/A	61146-4

In the chart above, width, height, and length are represented in inches. Weight is represented as pounds.