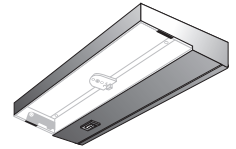
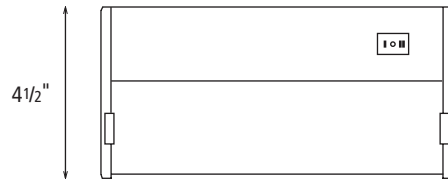
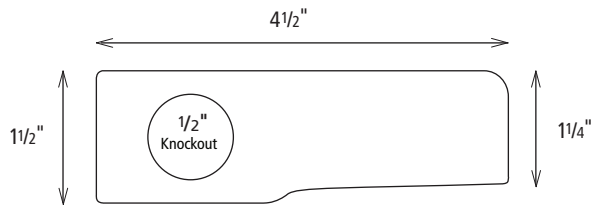


LED TASK LIGHT



SCHEMATICS:



9"	LTL-1-XX/YY	One Bulb LED Task Light
17.5"	LTL-2-XX/YY	Two Bulb LED Task Light
26"	LTL-3-XX/YY	Three Bulb LED Task Light
34.5"	LTL-4-XX/YY	Four Bulb LED Task Light
38.5"	LTL-5-XX/YY	Five Bulb LED Task Light

DESCRIPTION:

Completely self-contained under counter light fixture with 60,000 hour replaceable LED Modules included. Energy savings of 80% vs. Xenon/Halogen technology. 110VAC in and out up to 132 LED Modules. Modules include CREE LEDs at 2900K color temperature. Numerous contractor preferred 1/2" knockouts in each fixture. Offered in five sizes and six fixture finishes. UL Listed Damp Location.

APPLICATIONS

- ▶ Under-cabinet task light
- ▶ Work stations
- ▶ Over-cabinet accent light
- ▶ Laboratories
- ▶ Display cases and exhibits
- ▶ Merchandising
- ▶ Indirect accent light
- ▶ Wall units and bars

FEATURES

- ▶ Energy usage from 4.4 to 17.0 watts per fixture.
- ▶ The same light output of Xenon/Halogen technology.
- ▶ 60,000-hour light source average life.
- ▶ CREE™ LEDs inside.
- ▶ Pleasingly warm color temperature of 2900K.
- ▶ LED driver(s) included in every fixture.
- ▶ Uses standard household Romex™ wire input/output.
- ▶ Maximum of 132 LED Modules per 110VAC, 15AMP circuit.
- ▶ Light, efficient aluminum frame stamped for 110V hard wire input.
- ▶ Thin 1.25" deep design hides easily under most cabinets.
- ▶ Push-in connectors included for ease of power input.
- ▶ Captive screw mounting.
- ▶ Available in 6 colors: Aluminum, Black, Bronze, Copper, Polished Brass and Powder White.
- ▶ Available in five fixture lengths (see above schematic).

ORDERING LOGIC:

LTL-Z-XX-YY

Z = NUMBER OF LED MODULES
1, 2, 3, 4, 5

XX = TYPE
HW = Hard Wire
PC = Power Cord

YY = FIXTURE FINISH
WH = White CP = Cooper
BZ = Bronze PB = Polished Brass
AL = Aluminum BK = Black

SPECIFICATIONS:

Voltage	110VAC input to fixture via customer installed hardwire or factory installed power cord. Integral LED Driver(s) interior to every fixture.
LED Color Temperature	2900K +/- 200K
Average LED Module Life	60,000 hours
Fixture Finish	White or black powder coating; bronze, copper or polished brass anodized, or natural aluminum
Packaging	Individually packaged in 2-color corrugated box, J-rack compatible.
Construction	Aluminum extruded frame with injection molded ends for low fixture weight and consistency of finish.
Lens	Frosted glass for even light distribution. Hinged to aluminum frame for ease of fixture installation and security.
Wiring Options	Hardwire or power cord options. Hardwire option can be parallel wired ("daisy chained") up to 132 LED Modules.
Dimming	Not for use with dimmers.
Agency Approval	UL listed and labeled. Damp Location.



PROJECT:	TYPE:
NOTES:	