

2020 PRODUCT CATALOG

PRODUCTS FOR THE WATERWORKS
AND PLUMBING INDUSTRIES

Polywrap | Pipe Wrap Tapes | Marking Tapes | Detectable Tapes

Thread Seal Tapes | Electrical Tapes

Industrial Tapes | Tracer Wire | Supplies & More



Table of Contents

Section 1—Thread Seal Tapes & Sealants	Page
PTFE Thread Seal Tape—Made in USA	6-8
PTFE Thread Seal Tape—Made in China	9-11
PTFE Thread Seal Tape—Made in Italy	12
Expanded PTFE Universal Joint Sealant (Uniseal)	13
Valve Stem Packing products	13
 Section 2—Polyethylene Encasements (Polywrap)	 Page
All (8MIL & 12MIL) Linear Low Density Polywrap	14-17
4MIL Cross Laminated High Density	18-19
10MIL Cross Laminated High Density Joint Wrap	20
VB3 Enhanced Polyethylene	21
 Section 3—Polywrap Accessories	 Page
Tapes and Supplies	22
 Section 4—Marking & Barricade Tapes	 Page
Detectable Underground Marking Tape	23
Non-detectable Underground Marking Tape	24
Barricade Tape	25
 Section 5—Tracer Wire & Accessories	 Page
Tracer Wire	26
Connectors and Accessories	27
 Section 6—PVC Tapes	 Page
PVC Pipe Wrapping Tapes	28
PVC Electrical Tapes	29
 Section 7—Box Lok	 Page
Box Lok	30
 Section 8—Industrial Tapes & Supplies	 Page
Packaging & Industrial Tapes and Stretch Film & Supplies	31

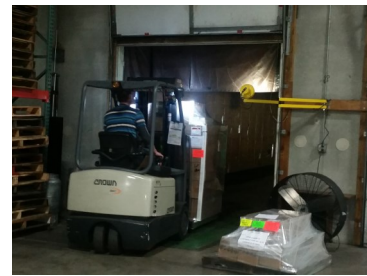
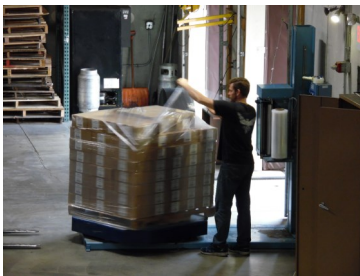


About AA Thread Seal Tape, Inc.



About AA Thread

AA Thread has been in business since 1979 supplying wholesalers and distributors in the waterworks and plumbing industries with quality products and superior service. Our products include Polyethylene Encasements for Ductile Iron Pipe, Pipe Wrapping Tape, Detectable/Non-Detectable Underground Marking Tapes, Barricade Tapes, Tracer Wire, PTFE Thread Seal Tapes/Sealants, Industrial Tapes, Supplies and More. Over the years we have grown to be one of the largest distributors of these materials in North America. We ensure that all of products meet and or exceed all regulatory specifications and standards. We keep a vast inventory of products in our warehouse located near Chicago, IL. We offer fast shipping on in stock items. We typically ship orders the same day, or next day, that they are received. Our consistent product quality combined with our knowledgeable customer service make us the perfect fit for all your pipe wrapping, plumbing and other industrial needs.



Rapid Ship Program

We keep a vast inventory of our products in stock. This gives us the opportunity to offer our Rapid Ship Program. Orders received before 10 A.M. (CST) will ship that same day.

This applies to regular stocked items in our catalog. Special Order items are subject to lead times. AA Thread is not responsible for any delayed delivery times by carrier.

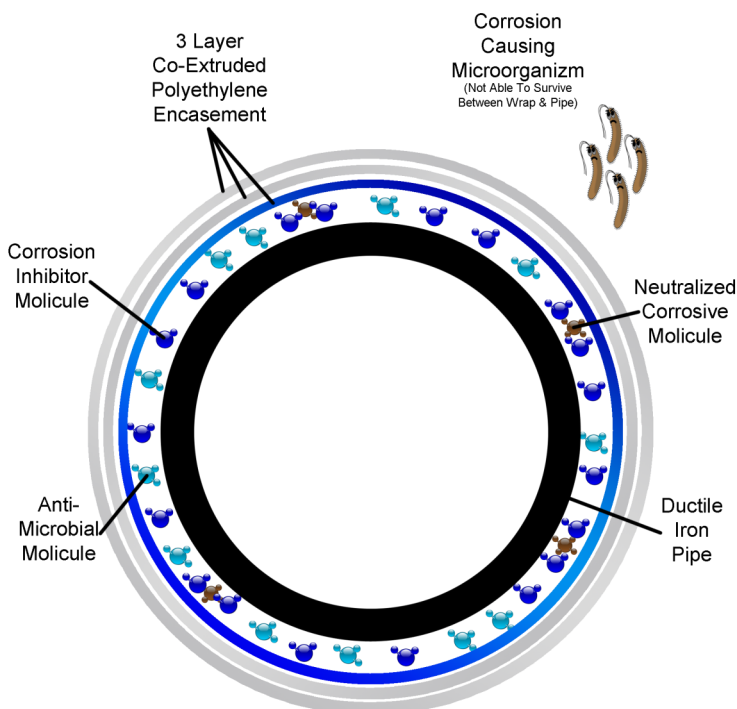
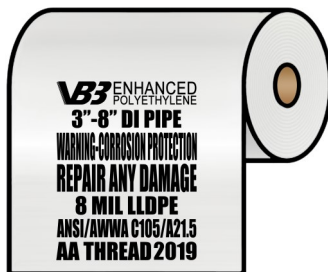


New Product Showcase

VB3 ENHANCED POLYETHYLENE

Polyethylene Encasement (Polywrap) has long been studied and proven to be the most effective and economical way to provide exterior corrosion protection to ductile iron pipe, valves, and fittings. Corrosion protection methods have evolved over the years and recent enhanced polyethylene have been introduced to further combat corrosion concerns involving micro-organisms. Enhanced polyethylene gives you the same great protection with enhanced features:

- Fitting 3" - 42" DIP
- Multi-layer co extruded LLDPE
- Anti-microbial biocide
- Volatile Corrosion Inhibitor (VCI)
- Greater Protection Over Standard Wraps
- Meets ANSI/AWWA C105/A21.5



More info on page 21



New to our line up this year is the Valve Box Alignment Device (VBAD): BOX LOK. The Box Lok is your \$25 fix to a \$2,000 problem. The Box Lok is an easy solution to keeping your valve boxes from shifting in the ground creating future headaches and unwanted work. Great for new or existing valve boxes, the Box Lok is an extremely affordable tool to prevent your valve boxes from ever shifting. It snaps around the opening nut, above the seal plate and can be used with Cast Iron boxes, 6" PVC risers and 8" PVC. Box Lok prices fluctuate with quantity and sizes so call now for a quote.

See page 30 for more information on Box Lok



We now sell a wide range of detectable and non detectable underground marking tapes as well as barricade tapes. These items are manufactured locally so items not in stock only have a couple day lead time. Custom orders also welcome. Contact us for more info.

More info on pages 23-25.



Thread Seal Tapes & Sealants

Section 1



White PTFE Thread Seal Tape

For all industrial applications. Made from 100% virgin PTFE. No pigments, or additives. May be used on all applications including water, oil, chemical, medical, and food processing where non-contamination standards are high. Exceeds the MIL Spec T-27730A standards. Temperature range of –450 to +550 degrees Fahrenheit. Offered and available in a variety of sizes and densities.

Yellow Gas Line PTFE Thread Seal Tape

Designed for gas lines of all types including natural gas, propane, and butane lines. Meets gas company standards world wide. Seals threads easily and quickly with confidence. Exceeds the MIL Spec T-27730A standards. Temperature range of –450 to +550 degrees Fahrenheit. Offered and available in a variety of sizes and densities.

Pink Plumbers PTFE Thread Seal Tape

For plumbers and pipe fitters. Color-coded pink to signify that it is heavier than standard white thread seal tapes. Ensures leak free joints. Exceeds the MIL Spec T-27730A standards. Temperature range of –450 to +550 degrees Fahrenheit. Offered and available in a variety of sizes and densities.

Gray Stainless Steel PTFE Thread Seal Tape

This tape has nickel pigment color added for use on all stainless steel fittings. Prevents galling, seizing, and corrosion. This is the only tape for coarse stainless steel threads. Exceeds the MIL Spec T-27730A standards. Temperature range of –450 to +550 degrees Fahrenheit. Offered and available in a variety of sizes and densities.

Green Oxygen PTFE Thread Seal Tape

Color coded green for oxygen applications. This grease free tape is great for all oxygen line applications. Exceeds the MIL Spec T-27730A standards. Temperature range of –450 to +550 degrees Fahrenheit. Offered and available in a variety of sizes and densities.



Thread Seal Tapes & Sealants

Section 1

PTFE Thread Seal Tapes—Made in USA

Standard Thread Seal Tape

Density: 0.7 Thickness: 3.5 MIL

Meets MIL Spec T-27730A

Item Number	Size	Quantity/Case	Weight/Case
10031	1/2"x260"	144	6 lbs
10051	1/2"x520"	144	8 lbs
10061	1/2"x600"	144	8 lbs
10071	1/2"x1296"	144	15 lbs
10081	3/4"x260"	144	9 lbs
10101	3/4"x520"	144	11 lbs
10121	3/4"x1296"	144	21 lbs
10141	1"x260"	144	7 lbs
10161	1"x520"	144	13 lbs
10181	1"x1296"	144	23 lbs



Premium High Density Thread Seal Tape

Density: 1.2 Thickness: 4 MIL

Meets MIL Spec T-27730A & CID A-A 58092

Item Number	Size	Quantity/Case	Weight/Case
10311	1/4"x260"	144	5 lbs
10321	1/4"x520"	144	7 lbs
10331	1/2"x260"	144	7 lbs
10351	1/2"x520"	144	10 lbs
10371	1/2"x1296"	144	20 lbs
11381	3/4"x260"	144	10 lbs
10381	3/4"x520"	144	14 lbs
10391	1"x520"	144	14 lbs





Thread Seal Tapes & Sealants

Section 1

Color Coded PTFE Thread Seal Tapes—Made in USA

Yellow High Density Gas Line Thread Seal Tape

Density: 0.9 Thickness: 4 MIL

Meets MIL Spec T-27730A

Item Number	Size	Quantity/Case	Weight/Case
10731	1/2"x260"	144	8 lbs
10751	1/2"x520"	144	9 lbs
10761	3/4"x260"	144	10 lbs
10771	3/4"x520"	144	16 lbs
10781	1"x260"	144	10 lbs
10791	1"x520"	144	16 lbs



Yellow Full Density Gas Line Thread Seal Tape

Density: 1.6 Thickness: 4 MIL

Meets MIL Spec T-27730A & CID A-A 58092



Item Number	Size	Quantity/Case	Weight/Case
13031	1/2"x260"	144	9 lbs
13051	1/2"x520"	144	12 lbs
13081	3/4"x260"	144	13 lbs
13101	3/4"x520"	144	19 lbs



Thread Seal Tapes & Sealants

Section 1

Color Coded PTFE Thread Seal Tapes—Made in USA

Gray Stainless Steel Thread Seal Tape

Density: 1.2 Thickness: 4 MIL

Meets MIL Spec T-27730A & CID A-A 58092

Item Number	Size	Quantity/Case	Weight/Case
14031	1/2"x260"	144	7 lbs
14051	1/2"x520"	144	10 lbs
14081	3/4"x260"	144	11 lbs
14101	3/4"x520	144	14 lbs
14141	1"x260"	144	12 lbs
14161	1"x520"	144	14 lbs



Pink Plumbers Thread Seal Tape

Density: 1.2 Thickness: 4 MIL

Meets MIL Spec T-27730A & CID A-A 58092

Item Number	Size	Quantity/Case	Weight/Case
15031	1/2"x260"	144	7 lbs
15051	1/2"x520"	144	11 lbs
15081	3/4"x260"	144	10 lbs
15141	1"x260	144	12 lbs



Green Oxygen Thread Seal Tape

Density: 1.2 Thickness: 4 MIL

Meets MIL Spec T-27730A & CID A-A 58092

Item Number	Size	Quantity/Case	Weight/Case
16031	1/2"x260"	144	7 lbs
16051	1/2"x520"	144	11 lbs
16101	3/4"x520"	144	14 lbs





Thread Seal Tapes & Sealants

Section 1

PTFE Thread Seal Tapes—Made in China



Standard Thread Seal Tape

Density: 0.4 **Thickness:** 3.5 MIL

Meets MIL Spec T-27730A

Item Number	Size	Quantity/Case	Weight/Case
40211C	1/2"x60"	1500	9 lbs
40021C	1/2"x100"	500	10 lbs
40031C	1/2"x260"	500	13 lbs
40051C	1/2"x520"	500	15 lbs
40071C	1/2"x1296"	250	19 lbs
40081C	3/4"x260"	350	12 lbs
40101C	3/4"x520"	350	14 lbs
40121C	3/4"x1296"	150	15 lbs
40141C	1"x260"	250	12 lbs
40161C	1"x520"	250	14 lbs
40181C	1"x1296"	150	16 lbs
42151C	1 1/2"x520"	150	14 lbs
42161C	2"x520"	150	16 lbs

High Density Thread Seal Tape

Density: 0.8 **Thickness:** 4 MIL

Meets MIL Spec T-27730A



Item Number	Size	Quantity/Case	Weight/Case
40011C	1/4"x520"	500	15 lbs
40251C	1/2"x520"	500	24 lbs
40261C	3/4"x520"	350	24 lbs



Thread Seal Tapes & Sealants

Section 1

Color Coded PTFE Thread Seal Tapes—Made in China



Yellow Gas Line Thread Seal Tape

Density: 0.9 **Thickness:** 4 MIL

Meets MIL Spec T-27730A

Item Number	Size	Quantity/Case	Weight/Case
43031C	1/2"x260"	500	18 lbs
43051C	1/2"x520"	500	26 lbs
43101C	3/4"x520"	350	21 lbs



Green Oxygen Thread Seal Tape

Density: 1.2 **Thickness:** 3.5 MIL

Meets MIL Spec T-27730A & CID A-A 58092

Item Number	Size	Quantity/Case	Weight/Case
46031C	1/2"x260"	500	24 lbs
46051C	1/2"x520"	500	38 lbs
46101C	3/4"x520"	350	34 lbs



Pink Plumbers Thread Seal Tape

Density: 0.9 **Thickness:** 4 MIL

Meets MIL Spec T-27730A

Item Number	Size	Quantity/Case	Weight/Case
45031C	1/2"x260"	500	18 lbs



Thread Seal Tapes & Sealants

Section 1

Professional Grade PTFE Thread Seal Tapes—Made in China



BLUE SEAL!

Our new line of BLUE SEAL PTFE Thread Seal Tape is now available on the market. This rugged multi-purpose tape comes on a 1,368 inch long super roll**, and is twice the density of standard thread seal tapes. This product is great for stubborn, hard to seal threads. It also requires less passes over the threads to get a good seal, making our new super roll last the user up to three times longer! BLUE SEAL PTFE Thread Seal Tape is made of virgin PTFE and exceeds the MIL Spec T-27730A standards. BLUE SEAL PTFE Thread Seal Tape has a temperature range of -450 degrees to +450 degrees (Fahrenheit). It is available in 1/2" 3/4" and 1" wide spools for your convenience.



Blue Seal Thread Seal Tape

Density: 0.8 Thickness: 3.5 MIL

Meets MIL Spec T-27730A

Item Number	Size	Quantity/Case	Weight/Case
40291C	1/2"x1368"	250	32 lbs
40292C	3/4"x1368"	150	27 lbs
40293C	1"x1296"	150	29 lbs



Thread Seal Tapes & Sealants

Section 1

PTFE Thread Seal Tapes—Made in Italy



Standard Thread Seal Tape

Density: 0.35 **Thickness:** 3.5 MIL

Meets MIL Spec T-27730A

Item Number	Size	Quantity/Case	Weight/Case
50011I	1/4"x520"	500	15 lbs
50211I	1/2"x60"	1500	7 lbs
50021I	1/2"x100"	500	11 lbs
50031I	1/2"x260"	500	13 lbs
50041I	1/2"x310"	500	14 lbs
50051I	1/2"x520"	500	14 lbs
50061I	1/2"x610	500	18 lbs
50071I	1/2"x1296"	185	15 lbs
50081I	3/4"x260"	350	13 lbs
50101I	3/4"x520"	350	16 lbs
50121I	3/4"x1296"	150	16 lbs
50141I	1"x260"	250	13 lbs
50161I	1"x520"	250	16 lbs
50181I	1"x1296"	140	15 lbs

Yellow Gas Line Thread Seal Tape

Density: 1.1 **Thickness:** 3.5 MIL

Meets MIL Spec T-27730A

Item Number	Size	Quantity/Case	Weight/Case
53031I	1/2"x260"	500	22 lbs
53081I	3/4"x260"	350	21 lbs
53141I	1"x260"	250	19 lbs



Thread Seal Tapes & Sealants

Section 1

Expanded PTFE Universal Joint Sealant—Uniseal 891

Uniseal is a joint sealant manufactured from 100% expanded PTFE and combined with a self adhesive strip for easy installation. Thanks to its unique properties, it can be compressed into a thin wide ribbon which conforms to all surface irregularities. This allows it to leave a strong, inert, tough, and universal sealant which resists high temperatures, pressures and corrosive environments. Uniseal is suitable for all industries including: food and drink, pharmaceutical, water and gas supply, petroleum, chemical, building, agricultural, automotive, marine and power.



Item Number	Size	Thickness
70070	1/8" x 100'	0.085"
70071	3/16" x 75'	0.12"
70072	1/4" x 50'	0.13"
70073	3/8" x 25'	0.14"
70074	1/2" x 15'	0.20"
70074-30	1/2" x 30'	0.20"
70074-150	1/2" x 150'	0.20"
70075	5/8" x 15'	0.29"
70076	3/4" x 15'	0.31"
70077	1" x 15'	0.34"

PTFE and Graphite Valve Stem Packing

Valve stem packing is a self forming packing material. It forms to all surfaces and irregularities such as scratches and pits. It is made from 100% virgin PTFE and has a high tensile strength. The products are self lubricating and eliminates valve stem wear. It contains no contaminants and is unaffected by most common chemicals. The temperatures ranges is -450 to +550 degrees Fahrenheit. It is easy to stock due to its unlimited shelf life. For use on valves, faucet stems, rotating shafts, reciprocating plungers, flanges, and for stuffing boxes. We offer PTFE and Graphite valve stem packing. The graphite product has graphite mixed in with the PTFE giving it an additional lubricant.

PTFE Valve Stem Packing

Item Number	Size
90008	3/32" x 8"
90021	3/32" x 21"
90024	3/32" x 24"



Graphite Valve Stem Packing

Item Number	Size
90001	3/32" x 24"





Polyethylene Encasements

Section 2

Linear Low Density Polyethylene Encasements (Polywrap) For Ductile Iron Pipe

Our Polywrap is made of 100% virgin polyethylene plus 3% carbon black for coloring and ultraviolet protection. It is gauged to 8.5 MIL (0.0085") to maintain the minimum of 8 MIL as required by the AWWA standards. The material is available in perforated lengths of 20' and 22' for easy tear off and no waste at roll ends while on the job site.

As with all protection methods, proper installation is vital to the success of the Polywrap. Care needs to be used when installing this item so it is not damaged. If part of the wrap is damaged repair it with tape if possible. Any additional questions about this product or how to install it contact our staff and we will be happy to assist you in any way possible.



Physical Properties of Finished Film

TEST	AWWA C105/A21.5 Min Req.	AA Thread's Film*
Tensile Strength	3,600 psi (ASTM D882)	MD 4,595 psi
	MD & TD	TD 4,410 psi
Elongation	700% min. (ASTM D882)	MD 1,073%
	MD & TD	TD 1,126%
Dielectric Strength	800 V/MIL (ASTM D149)	1,946 V/MIL
Impact resistance	600 grams (ASTM D1709)	1,189 grams
Propagation Tear	2,550 grams of force (ASTM D1922)	MD 4,462 gf
Resistance	MD & TD	TD 5,539 gf
Thickness	8 MIL (0.008")	8.5 MIL (0.0085")

*Tests are averages performed from an independent lab result on our 8MIL Linear Low Density Polywrap



Polyethylene Encasements

Section 2

Linear Low Density Polyethylene Encasements (Polywrap) For Ductile Iron Pipe



8 MIL Black Polywrap Pipe Sleeves

Conforms to: ANSI/AWWA C105/A21.5

Item Number	Pipe Dia.	Tube Size	Weight/Case
70001	Up to 8"	20"x400'/20' Perf.	57 lbs
70002	Up to 8"	20"x440'/22' Perf.	63 lbs
70002-220	Up to 8"	20"x220'/22' Perf.	32 lbs
70003	10"	24"x400'/20' Perf.	68 lbs
70004	10"	24"x440'/22' Perf.	76 lbs
70227-22	12"	27"x440'/22' Perf.	85 lbs
70227-22-220	12"	27"x220'/22' Perf.	43 lbs
70005	12" to 14"	30"x200'/20' Perf.	43 lbs
70006	12" to 14"	30"x220'/22' Perf.	47 lbs
70234-22	16"	34"x220'/22' Perf.	53 lbs
70007	16" to 18"	37"x200'/20' Perf.	53 lbs
70008	16" to 18"	37"x220'/22' Perf.	58 lbs
70241-22	20"	41"x220'/22' Perf.	64 lbs
70009	20" to 24"	54"x200'/20' Perf.	77 lbs
70010	20" to 24"	54"x220'/22' Perf.	84 lbs
70011	30"	67"x140'/20' Perf.	67 lbs
70014	30"	67"x154'/22' Perf.	74 lbs
70015	36" to 42"	81"x110'/22' Perf.	63 lbs
70013	48"	95"x110'/22' Perf.	75 lbs
70018	54" to 60"	108"x110'/22' Perf.	84 lbs



Polyethylene Encasements

Section 2

Linear Low Density Polyethylene Encasements (Polywrap) For Ductile Iron Pipe

8 MIL Blue Polywrap Pipe Sleeves

Conforms to: ANSI/AWWA C105/A21.5



Item Number	Pipe Dia.	Tube Size	Weight/Case
77020BLU	Up to 8"	20"x400' No Perf.	57 lbs
77020-22BLU	Up to 8"	20"x440'/22' Perf.	63 lbs
77027-22BLU	10" to 12"	27"x440'/22' Perf.	85 lbs
77030BLU	10" to 14"	30"x200' No Perf.	43 lbs
77030-22BLU	10" to 14"	30"x220'/22' Perf.	47 lbs
77037BLU	16" to 18"	37"x200' No Perf.	53 lbs
77054BLU	20" to 24"	54"x200' No Perf.	77 lbs
77081BLU	36" to 42"	81"x110' No Perf.	63 lbs

8 MIL Green Polywrap Pipe Sleeves

Conforms to: ANSI/AWWA C105/A21.5



Item Number	Pipe Dia.	Tube Size	Weight/Case
70001GRN	Up to 8"	20"x300' No Perf.	41 lbs
70005GRN	10" to 14"	30"x200' No Perf.	43 lbs
70007GRN	16" to 18"	37"x200' No Perf.	53 lbs
70009GRN	20" to 24"	54"x200' No Perf.	77 lbs
70015GRN	36" to 42"	81"x110' No Perf.	63 lbs

8 MIL Purple Polywrap Pipe Sleeves

Conforms to: ANSI/AWWA C105/A21.5



Item Number	Pipe Dia.	Tube Size	Weight/Case
73001PUR	Up to 8"	20"x200' No Perf.	29 lbs
73005PUR	10" to 14"	30"x200' No Perf.	43 lbs
73007PUR	16" to 18"	37"x200' No Perf.	53 lbs
73009PUR	20" to 24"	54"x200' No Perf.	77 lbs
73015PUR	36" to 42"	81"x110' No Perf.	63 lbs



Polyethylene Encasements

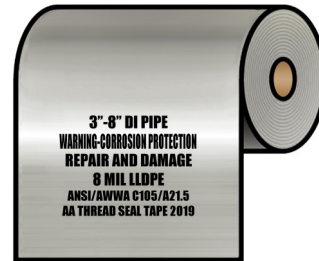
Section 2

Linear Low Density Polyethylene Encasements (Polywrap) For Ductile Iron Pipe

8 MIL Clear Polywrap Pipe Sleeves

Conforms to: ANSI/AWWA C105/A21.5

Item Number	Pipe Dia.	Tube Size	Weight/Case
72002	Up to 8"	20"x440'/22' Perf.	63 lbs
72006	10" to 14"	30"x220'/22' Perf.	47 lbs



12 MIL Clear Polywrap Pipe Sleeves

Conforms to: ANSI/AWWA C105/A21.5

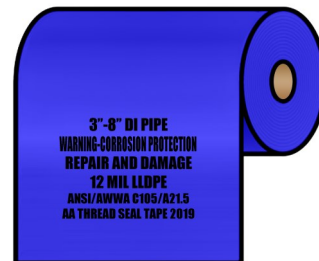
Item Number	Pipe Dia.	Tube Size	Weight/Case
76002	Up to 8"	20"x220'/22' Perf.	47 lbs
76006	10" to 14"	30"x220'/22' Perf.	72 lbs
76008	16" to 18"	37"x220'/22' Perf.	87 lbs
76010	20" to 24"	54"x110'/22' Perf.	63 lbs
76014	30"	67"x110'/22' Perf.	78 lbs



12 MIL Blue Polywrap Pipe Sleeves

Conforms to: ANSI/AWWA C105/A21.5

Item Number	Pipe Dia.	Tube Size	Weight/Case
76002-BLUE	Up to 8"	20"x220'/22' Perf.	47 lbs
76006-BLUE	10" to 14"	30"x220'/22' Perf.	72 lbs
76008-BLUE	16" to 18"	37"x220'/22' Perf.	87 lbs
76010-BLUE	20" to 24"	54"x110'/22' Perf.	63 lbs
76015-BLUE	36" to 42"	81"x110'/22' Perf.	95 lbs





Polyethylene Encasements

Section 2

Cross Laminated High Density Polyethylene Encasements (Polywrap) For Ductile Iron Pipe

This film is extruded from virgin high density polyethylene resins, molecularly oriented through a stretching process. The two single ply layers are laminated bi-directionally. The grain orientation of each layer are run at a 90 degree angle to each other, which produces a high strength material. It is then finished through a heated ribbing process, which produces a very strong and durable finished product. Our material surpasses all of the specifications of the ANSI/AWWA C105/A21.5 standards and has exceptional resistance to punctures and tears that may occur during the installation process.



Physical Properties of Finished Film

TEST	AWWA C105/A21.5 Min Req.	AA Thread's Film*
Tensile Strength	6,300 psi (ASTM D882)	MD 7,593 psi
	MD & TD	TD 8,986 psi
Elongation	100% min. (ASTM D882)	MD 615.3%
	MD & TD	TD 388.7%
Dielectric Strength	800 V/MIL (ASTM D149)	1,306 V/MIL
Impact resistance	800 grams (ASTM D1709)	868 grams
Propagation Tear	250 grams of force (ASTM D1922)	MD 771 gf
Resistance	MD & TD	TD 972 gf
Thickness	4 MIL (0.004")	4 MIL (0.004")

*Tests are averages performed from an independent lab result on our 4MIL Cross Laminated High Density Polywrap



Polyethylene Encasements

Section 2

Cross Laminated High Density Polyethylene Encasements (Polywrap) For Ductile Iron Pipe

4 MIL Black X-Lam Polywrap Pipe Sleeves

Conforms to: ANSI/AWWA C105/A21.5

Item Number	Pipe Dia.	Tube Size	Weight/Case
75002	Up to 8"	20"x440' No Perf.	38 lbs
75005	10" to 14"	30"x220' No Perf.	28 lbs
75008	16" to 20"	41"x200' No Perf.	35 lbs
75010	20" to 24"	54"x200' No Perf.	46 lbs
75011	30"	67"x200' No Perf.	57 lbs
75012	36" to 42"	81"x100' No Perf.	35 lbs
75013	48"	95"x100' No Perf.	48 lbs
75014	54" to 60"	108"x100' No Perf.	54 lbs





Polyethylene Encasements

Section 2

Cross Laminated High Density Polyethylene Joint Wrap

Our Joint Wrap is made of 10 MIL Cross Laminated High Density Polyethylene and is the strongest protection available against punctures and tears where they are most likely to happen due to sharp metal from sheared bolt-heads on mechanical joints. The material is two and a half times thicker than the 4 MIL Cross Laminated HDPE used for ductile iron pipe. It exceeds all the minimum requirements for the ANSI/AWWA C105/A21.5 standards. The material is made from 100% virgin high density Polyethylene resins that are stretched in machine and transverse directions and laminated with their grain orientation in opposite directions for strength and durability.



Physical Properties of Finished Film

TEST	AWWA C105/A21.5 Min Req.	AA Thread's Film*
Elongation	100% min. (ASTM D882)	MD 800%
	MD & TD	TD 800%
Impact resistance	800 grams (ASTM D1709)	1,000 grams
Propagation Puncture Tear	N/A	MD 15,000 grams
		TD 15,000 grams
Thickness	4 MIL (0.004")	10.5 MIL (0.0105")

*Tests are averages performed from an independent lab result on our 10MIL Cross Laminated High Density Joint Wrap

10 MIL Joint Wrap Sheets

Conforms to: ANSI/AWWA C105/A21.5

Item Number	Sheet Size	Weight/Case
75030JW	30"x100'	13 lbs

10 MIL Joint Wrap Sleeves

Conforms to: ANSI/AWWA C105/A21.5

Item Number	Pipe Dia.	Tube Size	Weight/Case
75130JW	6" to 10"	30"x100'	26 lbs
75141JW	12" to 16"	41"x100'	35 lbs
75154JW	18" to 24"	54"x100'	46 lbs



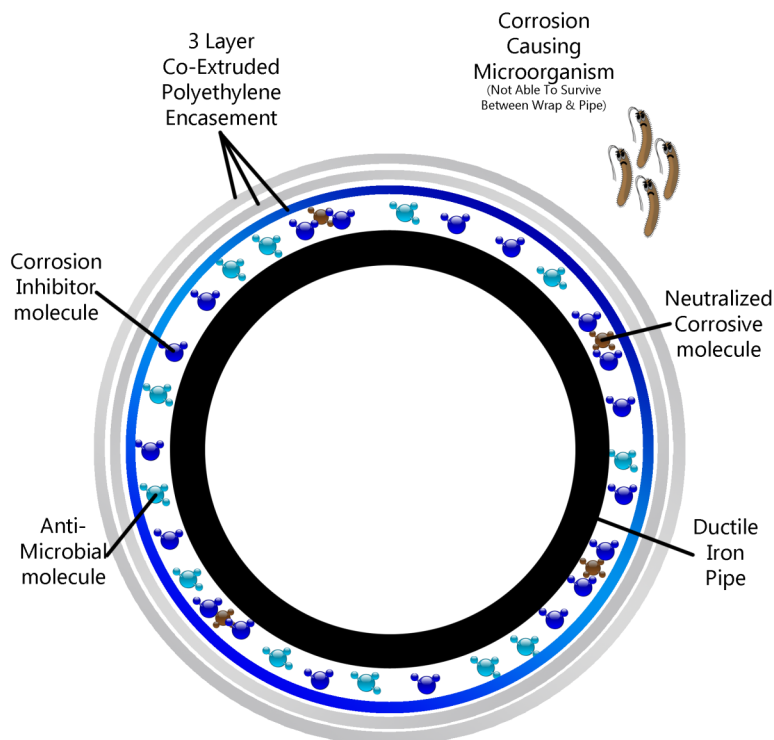
Polyethylene Encasements

Section 2

VB3 Enhanced Polyethylene

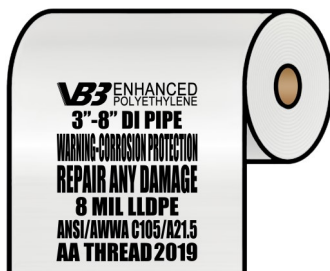
Polyethylene Encasement (Polywrap) has long been studied and proven to be the most effective and economical way to provide exterior corrosion protection to ductile iron pipe, valves, and fittings. Corrosion protection methods have evolved over the years and recent enhanced polyethylene have been introduced to further combat corrosion concerns involving microorganisms. Enhanced polyethylene gives you the same great protection with enhanced features:

- Multi-layer co extruded LLDPE
- Anti-microbial biocide
- Volatile Corrosion Inhibitor (VCI)
- Greater Protection Over Standard Wraps
- Meets ANSI/AWWA C105/A21.5



VB3 ENHANCED
POLYETHYLENE

www.AAThread.com/VB3



Item Number	Pipe Dia.	Tube Size	Weight/Case
70320-VB3	3" to 8"	20"x440' No Perf.	63 lbs
70327-VB3	10" to 12"	27"x220' No Perf.	43 lbs
70330-VB3	14"	30"x220' No Perf.	47 lbs
70334-VB3	14" to 16"	34"x220' No Perf.	53 lbs
70341-VB3	18" to 20"	41"x220' No Perf.	64 lbs
70354-VB3	24"	54"x220' No Perf.	84 lbs
70381-VB3	30" to 42"	81"x110' No Perf.	63 lbs



Polywrap Accessories

Section 3

Other Tapes & Supplies



Restrained Joint Tape

Item Number	Size	Description	Quantity/Case	Weight/Case
70911	2"x55 YD	White Marking Tape	36 Rolls	13 lbs

Polywrap Securing Products



See Page 28 for our 10 MIL PVC Tapes, also commonly used for securing Polywrap.

Polywrap Tape

Item Number	Size	Description	Quantity/Case	Weight/Case
60811	2"x100'	6.5 MIL Vinyl Polywrap Tape	36 Rolls	24 lbs



Large Cable Ties (For Securing Wrap)

Item Number	Size	Description	Quantity/Case	Weight/Case
66048	0.34"x48"	Black Cable Ties	500 Ties	27 lbs



Marking & Barricade Tapes

Section 4

Detectable Underground Marking Tapes

CAUTION: BURIED SANITARY SEWER LINE BELOW

CAUTION: STORM SEWER LINE BELOW

CAUTION: BURIED SEWER LINE BELOW

CAUTION: STORM DRAIN LINE BURIED BELOW

CAUTION: BURIED FORCE MAIN BELOW

CAUTION: BURIED FORCE MAIN BELOW

CAUTION: CHILLED WATER LINE BURIED BELOW

CAUTION: BURIED WATER LINE BELOW

CAUTION: RECLAIMED WATER LINE BURIED BELOW

CAUTION: BURIED PIPELINE BELOW

CAUTION: BURIED GAS LINE BELOW

CAUTION: FIBER OPTIC CABLE BURIED BELOW

CAUTION: BURIED COMMUNICATION LINE BELOW

CAUTION: BURIED TELEPHONE LINE BELOW

CAUTION: BURIED ELECTRIC LINE BELOW

CAUTION: FIRE PROTECTION LINE BURIED BELOW

Many other legends available! Contact us for more info.

Our new expanded line of Detectable Underground Marking Tape is now available. These American Made products are manufactured locally to us which allow for short lead time, custom orders, and wider range of products. While most of these are not stocked in our warehouse we do still offer a very short lead time of 1-2 days on items shown above. We do have a handful of items we stock that are available for same day shipping and can be ordered by the roll. Be sure to check with us as we plan to expand the items we stock in our warehouse.

5 MIL Detectable Tapes

Size	Weight/Roll	Rolls/Case
2"x1000'	5 lbs	9 Rolls
3"x1000'	7.5 lbs	6 Rolls
4"x1000'	10 lbs	4 Rolls
6"x1000'	15 lbs	3 Rolls
12"x1000'	30 lbs	2 Rolls



Marking & Barricade Tapes

Section 4

Non-Detectable Underground Marking Tapes

CAUTION: BURIED SEWER LINE BELOW

CAUTION: STORM DRAIN BURIED BELOW

CAUTION: BURIED WATER LINE BELOW

CAUTION: RECLAIMED WATER LINE BURIED BELOW

CAUTION: RECLAIMED/RECYCLED WATER DO NOT DRINK

CAUTION: BURIED ELECTRIC LINE BELOW

CAUTION: BURIED PIPELINE BELOW

CAUTION: BURIED ELECTRIC LINE BELOW

CAUTION: BURIED GAS LINE BELOW

CAUTION: BURIED FIBER OPTIC LINE BELOW

CAUTION: BURIED TELEPHONE LINE BELOW

Many other legends available! Contact us for more info.

Our new expanded line of Underground Marking Tape is now available. These American Made products are manufactured locally to us which allow for short lead time, custom orders, and wider range of products. While most of these are not stocked in our warehouse we do still offer a very short lead time of 1-2 days on items shown above. We will be stocking some of the more popular items over time which will allow for same day shipping and single roll orders. Contact us to see if the item you are looking for is stocked.

4 MIL Underground Marking Tapes

Size	Weight/Roll	Rolls/Case
3"x1000'	5 lbs	6 Rolls
4"x1000'	6.7 lbs	4 Rolls
6"x1000'	10 lbs	3 Rolls
12"x1000'	20 lbs	2 Rolls



Marking & Barricade Tapes

Section 4

Barricade Tapes

CAUTION CAUTION CAUTION CAUTION	CAUTION CUIDADO	CAUTION DO NOT ENTER
CAUTION CONSTRUCTION AREA	CAUTION HARD HAT AREA	CAUTION MEN WORKING OVERHEAD
CAUTION OPEN TRENCH	CAUTION HAZARDOUS AREA	FIRE LINE DO NOT CROSS
CAUTION WET FLOOR	CAUTION WET PAINT	SECURITY LINE DO NOT CROSS
CRIME SCENE DO NOT CROSS	SHERIFFS LINE DO NOT CROSS	POLICE LINE DO NOT CROSS
DANGER DO NOT ENTER	DANGER DANGER DANGER	

Many other legends available! Contact us for more info.

Our new expanded line of Barricade Tape is now available. These American Made products are manufactured locally to us which allow for short lead time, custom orders, and wider range of products. While most of these are not stocked in our warehouse we do still offer a very short lead time of 1-2 days on items shown above. We will be stocking some of the more popular items over time which will allow for same day shipping and single roll orders. Contact us to see if the item you are looking for is stocked.

Barricade Tapes

Thickness	Size	Weight/Roll	Rolls/Case
2 MIL	3"x300'	1 lbs	12 Rolls
2 MIL	3"x1000'	2.8 lbs	6 Rolls
3 MIL	3"x300'	1.2 lbs	12 Rolls
3 MIL	3"x1000'	3.8 lbs	6 Rolls
4 MIL	3"x300'	1.5 lbs	12 Rolls
4 MIL	3"x1000'	4.8 lbs	6 Rolls



Tracer Wire & Accessories

Section 5

Tracer Wire

Below is a list of tracer wires we have available. Each different style is available in many sizes and colors. The copper core wires can come solid or stranded cores. The copper clad steel is only available in solid core. Copper clad steel is the most cost effective product as it replaces some of the very expensive copper with steel. It also is much stronger than copper core wires and comes with a long list of other benefits.

Available Colors: Yellow, Blue, Green, Orange, Purple, Red, White, Black.



PRO-TRACE

Copper Clad Steel

-45 MIL HDPE Insulation

-Direction Drilling Applications

-Rated 30 Volts

-Sized 6 AWG to 14 AWG



PRO-TRACE

Copper Clad Steel

-30 MIL HDPE Insulation

-High Flex / Open Trench

-Rated up to 30 Volts

-Sized 8 AWG to 18 AWG



PRO-TRACE

Copper Clad Steel

-45 MIL HDPE Insulation

-High Flex / Open Trench

-Rated up to 30 Volts

-Sized 8 AWG to 18 AWG



Copper PE45

-45 MIL HDPE Insulation

-Solid Or Stranded

-Rated up to 600 Volts

-Sized 8 AWG to 14 AWG



Copper UF

-60 MIL PVC Insulation

-Solid Or Stranded

-Rated up to 600 Volts

-Sized 8 AWG to 14 AWG



Copper PE30

-30 MIL HDPE Insulation

-Solid Or Stranded

-Rated up to 30 Volts

-Sized 8 AWG to 14 AWG



Copper THHN

-15 MIL PVC Insulation

-Solid Or Stranded

-Rated up to 600 Volts

-Sized 8 AWG to 14 AWG



Copper TFFN

-15 MIL PVC Insulation

-Solid Or Stranded

-Rated up to 600 Volts

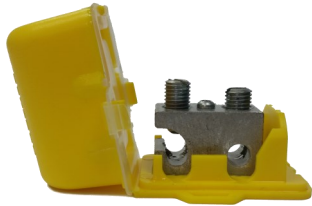
-Sized 16 AWG to 18 AWG



Tracer Wire & Accessories

Section 5

Connectors & Accessories

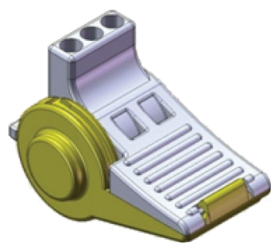


68001-Y Box style DB connector

Part Number	Wire Range	Wire Count	Max Volt	Case Count
68001-(B or Y)	14-10 AWG	2	50v	5 Units
68002-(B or Y)	14-10 AWG*	3	300v	50 Units
68003	18-8 AWG	2	1000v	50 Units

*AWG range not for all wire styles

B or Y stands for Blue or Yellow



68002-Y Pro-Trace DB connector

-Does not work with HD-CCS & HDD-CCS wire

STEP #1



Open wings (handles) to 90 degrees position

STEP #2



Strip wires to 5/8". Use the strip guide molded into the connector for reference.

STEP #3

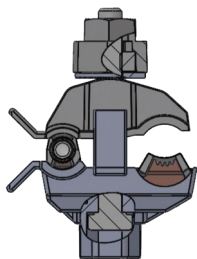


Insert striped wires into connector. The striped ends of the wires should be visible through the clear housing on the back.

STEP #4



Hold wires in place while squeezing wings (handles) together until the latch snaps shut.



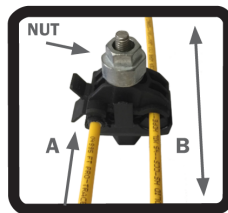
68003 Tracer-Lock DB connector with in-line tap

STEP #1



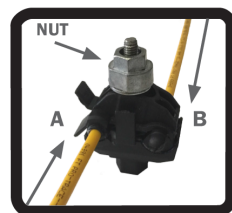
Loosen shear head nut counter-clockwise to open up connector.

STEP #2: SIDE-TAP (OR)



TAP for uncut main to lateral. Use side B and position connector as desired on the tracer main. Then insert lateral wire completely into side A. *Hand tighten nut clockwise to hold wires in place.*

STEP #2: SPLICE

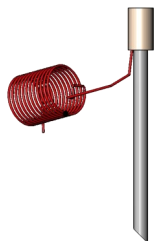


SPLICE for reel to reel. Insert unstripped tracer wire end completely into side A. Then insert new tracer wire end into side B. *Hand tighten nut clockwise to hold wires in place.*

STEP #3



After unstripped wires are in place use a 1/2" (13mm) socket wrench or drill. At 70 lbs/in torque, the shear nut will break away (over torquing is fine). Install is complete and your tracer wire has been **TRACER-LOCKED™!**



Part Number	Description	Case
68100	Magnesium Grounding Anode for Tracer Wire	1
68210	Tracer-Pit Lite Duty Test Station	1
68220	Tracer-Pit Lite Duty Adjustable Test Station*	1
68230	Tracer-Pit Lite Duty XL Test Station*	1
68240	Tracer-Pit Concrete/Driveway Test Station	1
68250	Tracer-Pit Roadway Duty Test Station	1





PVC Pipe Wrapping Tapes

This tape consists of stabilized, plasticized PVC (poly vinyl chloride) film coated with a noncorrosive pressure sensitive adhesive. It is excellent in moisture resistance and anti-corrosion applications. Also it has outstanding conformability and adhesion to metal and plastics



Black PVC Pipe Wrapping Tape

Item Number	Size	Thickness	Quantity/Case	Weight/Case
60210	1 1/2"x100'	10 MIL	48 Rolls	41 lbs
60211	2"x100'	10 MIL	36 Rolls	39 lbs
60221	4"x100'	10 MIL	18 Rolls	39 lbs
60241	6"x100'	10 MIL	8 Rolls	26 lbs
60231	2"x100'	20 MIL	18 Rolls	42 lbs
60251	6"x100'	20 MIL	12 Rolls	81 lbs

UPC Printed PVC Pipe Wrapping Tape

Item Number	Size	Thickness	Quantity/Case	Weight/Case
60310	1"x100'	10 MIL	72 Rolls	41 lbs
60311	2"x100'	10 MIL	36 Rolls	40 lbs
60321	4"x100'	10 MIL	18 Rolls	41 lbs
60331	2"x100'	20 MIL	18 Rolls	41 lbs
60341	4"x100'	20 MIL	12 Rolls	55 lbs

Yellow & Green PVC Pipe Wrapping Tape

Item Number	Size	Thickness	Quantity/Case	Weight/Case
60411	2"x100' Yellow	10 MIL	36 Rolls	41 lbs
60412	4"x100' Yellow	10 MIL	18 Rolls	42 lbs
60511	2"x100' Green	10 MIL	36 Rolls	41 lbs
60521	4"x100' Green	10 MIL	18 Rolls	42 lbs



PVC Electrical Tapes

We carry a wide variety of colored electrical tape to meet your needs. Each roll is individually wrapped in cellophane to keep dirt away during transporting and storage. These are also packaged in 10 roll sleeves. Our PVC Electrical Tape is suitable for use at no more than 600V, and not more than 176 degree Fahrenheit. UL listed.



Electrical Tape (Low Lead)

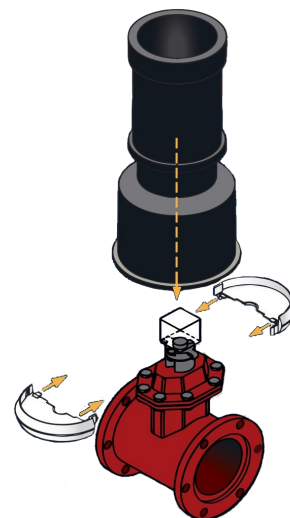
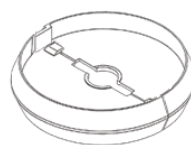
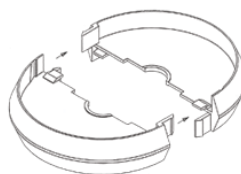
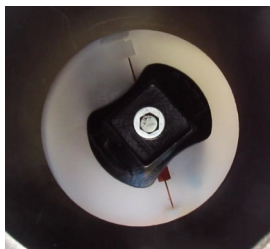
Thickness: 7 MIL

Item Number	Size	Color	Quantity/Case	Weight/Case
60011	3/4"x60'	Black	360 Rolls	63 lbs
60012	3/4"x60'	Black	200 Rolls	33 lbs
60031	3/4"x60'	Red	200 Rolls	33 lbs
60041	3/4"x60'	Blue	200 Rolls	33 lbs
60051	3/4"x60'	Green	200 Rolls	33 lbs
60061	3/4"x60'	White	200 Rolls	33 lbs
60071	3/4"x60'	Orange	200 Rolls	33 lbs
60081	3/4"x60'	Brown	200 Rolls	33 lbs
60091	3/4"x60'	Gray	200 Rolls	33 lbs
60101	3/4"x60'	Yellow	200 Rolls	33 lbs



Box Lok

Section 7



6" PVC PIPE (O.D. OF BOXLOK = 5.5")

MANUFACTURER	VALVE SIZE							
	2"	3"	4"	6"	8"	10"	12"	12+"
AVK	3	3	3	3	3	3	3	3
AFC	4	4	4	4	4	3	3	3
J&S Valve	4	4	4	4	4	3	3	3
East Jordan	4	4	4	4	4	4	3	3
Mueller	4	4	4	4	4	4	3	3
US Pipe	4	4	4	4	4	4	3	3
Clow	4	4	4	4	4	**	**	**
Kennedy	4	4	4	4	4	**	**	**
M&H	4	4	4	4	4	**	**	**

CAST IRON VALVE BOX /8" PVC (O.D. OF BOXLOK = 7.5")

MANUFACTURER	VALVE SIZE							
	2"	3"	4"	6"	8"	10"	12"	12+"
AVK	1	1	1	1	1	1	1	**
AFC	2	2	2	2	2	1	1	**
J&S Valve	2	2	2	2	2	1	1	**
East Jordan	2	2	2	2	2	2	1	**
Mueller	2	2	2	2	2	2	1	**
US Pipe	2	2	2	2	2	2	1	**
Clow	2	2	2	2	2	K1	K1	K1
Kennedy	2	2	2	2	2	K1	K1	K1
M&H	2	2	2	2	2	K1	K1	K1

More and more water systems are realizing the advantages of a Valve Box Alignment Device (VBAD). During installation, a VBAD will align the Valve Box to the Valve without the extra labor required to keep the valve box in position. The design of the Box Lok creates a concentric position between the operating nut and the inside wall of the Valve box. This prevents movement of the Valve Box. This movement will make operating the Valve more and more difficult over time and the Valve Box will have to be reset. A Box Lok will also keep dirt from settling around an operating nut. This dirt will wear seals and lessen the life of a Valve.

- Snaps around the valve stem—under the opening nut, above the seal plate
- Works with nearly all buried valves with valve box access
- For use with cast Iron boxes, 6" PVC risers and 8" PVC
- Made in the USA

Box Lok

Item Number	Size	Quantity/Case	Weight/Case
BL1	1	25 units	12 lbs
BL2	2	25 units	12 lbs
BL3	3	25 units	8 lbs
BL4	4	25 units	8 lbs
BLK1	K1	25 units	12 lbs

*Prices shown unit. *Price includes delivery on orders of 1 case or more within the Continental United States.

*Prices are subject to change without notice



Industrial Tapes & Supplies

Section 8

Packaging & Industrial Tapes, Stretch Film and Supplies



Packing & Industrial Tapes

Item Number	Size	Description	Thickness	Quantity/Case	Weight/Case
70023	2"x110 Yard	Carton Sealing Clear Tape	1.8 MIL	36 Rolls	22 lbs
70024	2"x110 Yard	Carton Sealing Tan Tape	1.8 MIL	36 Rolls	22 lbs
70060	2"x60 Yard	Duct Tape	7 MIL	24 Rolls	30 lbs
70061	2"x60 Yard	Duct Tape	9 MIL	24 Rolls	36 lbs



Packing & Industrial Tapes

Item Number	Size	Description	Quantity/Case	Weight/Case
70028	3/4"x60 Yard	Fiberglass Strapping Tape	48 Rolls	12 lbs
70029	1"x60 Yard	Fiberglass Strapping Tape	36 Rolls	13 lbs
70049	2"x55 Yard	Heavy Duty Clear Seal Tape	36 Rolls	14 lbs
70050	2"x110 Yard	PVC Clear Seal Tape	36 Rolls	28 lbs



Stretch Films

Item Number	Description	Size	Quantity/Case	Weight/Case
70040	Standard	80g 18"x1500'	4 Rolls	40 lbs
70140	Standard	90g 18"x1500'	4 Rolls	45 lbs
70138	Machine Grade	75g 20"x5000'	1 Roll	33 lbs
70100	Extended Core Handle	20"x1000'	4 Rolls	26 lbs



Other Items

Item Number	Description	Size	Quantity/Box	Weight/Box
70043	Heavy Duty Tape Dispenser	2"wide	1	2 lbs
70041	Packing List Envelopes	4.5"x5.5"	1000 Envelopes	7 lbs





AA THREAD

SINCE 1979

AA Thread Seal Tape, Inc.

1275 Kyle Court | Wauconda, IL 60084

(800) 537-7139

www.aathread.com