

AB&A for Commercial & Residential Applications

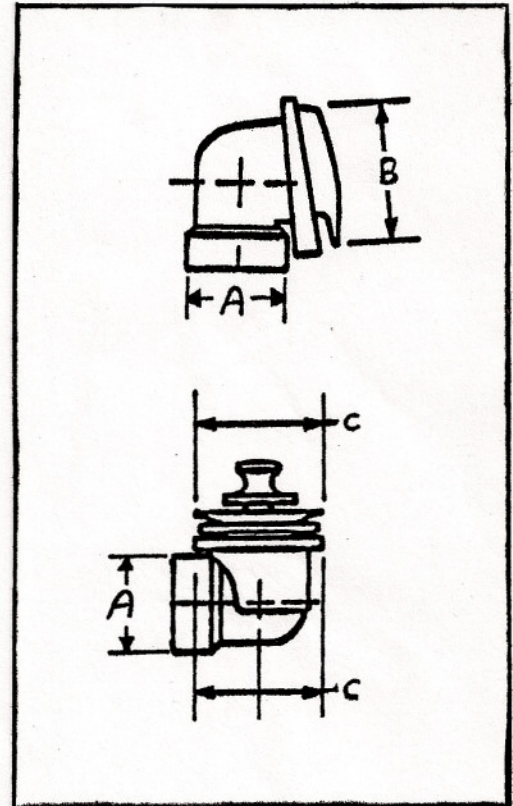
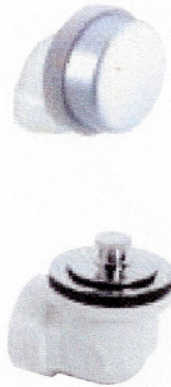
Job Name _____ Contractor _____
 Job Location _____ Approval _____
 Engineer _____ Contractor's P.O. No. _____
 Approval _____ Representative _____

Series 2217

**Classic Bath Waste and Overflow
 Brass Push en Lift Closure
 with Test Cap (Less Pipe and Tee)**

UPC Listed
 Manufactured to ASME Standard
 ASME A 112.18.2-2005 / CSA B 125.2-05

Part #	To Submit	Quantity
2217		
2221		
2218		
2222		



Part #	Description	Material	Finish	Dimensions		
				A	B	C
2217		ABS	Chrome Plated Finish on Trim ONLY	1-1/2" Schedule 40 DWV	3-3/8"	2-7/8"
2221		ABS	Special Finish on Trim ONLY	1-1/2" Schedule 40 DWV	3-3/8"	2-7/8"
2218		PVC	Chrome Plated Finish on Trim ONLY	1-1/2" Schedule 40 DWV	3-3/8"	2-7/8"
2222		PVC	Special Finish on Trim ONLY	1-1/2" Schedule 40 DWV	3-3/8"	2-7/8"

AB&A's product specifications are approximate and for Reference Only. AB&A products are based on the United States of America customary units of measure. AB&A reserves the right to change or modify product design, specifications, materials, or construction without prior notice. AB&A reserves the right to not incur any obligation to make such changes and modifications on all previously or subsequently sold AB&A products.



**AMERICAN BRASS & ALUMINUM
 FOUNDRY, INC.**

2060 GARFIELD AVE., CITY OF COMMERCE, CA 90040

800-545-9988

FAX 800-835-7020

WWW.ABAFOUNDRY.COM

WWW.ABAINC.NET