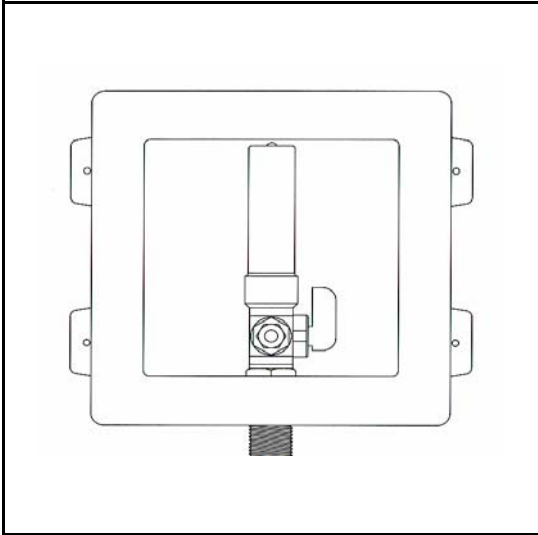


# Specialty Products™



## SPECIFICATION

Furnish and install Plastic Icemaker Box with Hammer Arrestor as manufactured by LSP Products Group/Specialty Products.

## DESIGN FEATURES

- Slim line box profile allows for 1" backing.
- Adjustable face plate accommodates up to 5/8" wall thickness.
- Box constructed of high-impact plastic.
- Patented Hammer Arrestor design.

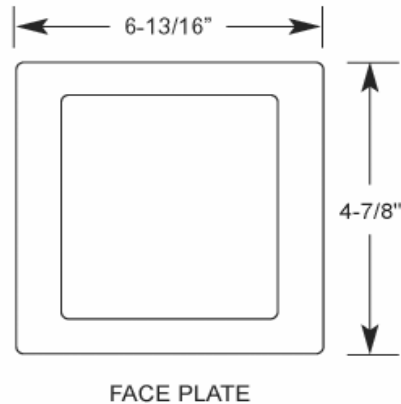
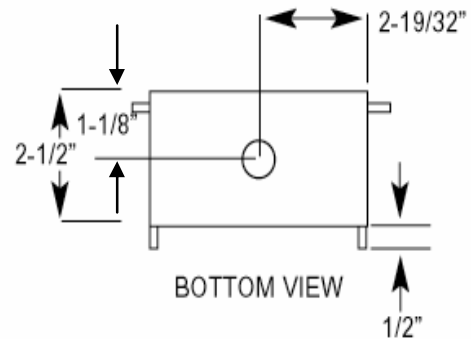
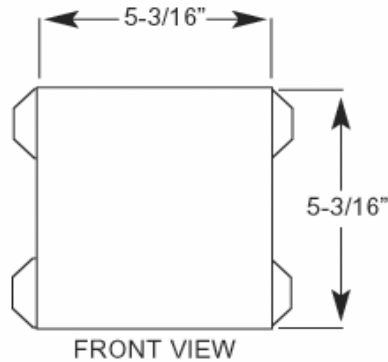
## COMPLIANCES/LISTINGS

- IAPMO File #0901
- Valve meets or exceeds ASME A112.18.1 Stand
- Water Hammer Arrestor meets or exceeds ASSE 1010

## PACKAGING

T=Tract Pack. All tract packs have face plates packaged

## PLASTIC ICE MAKER BOX WITH HAMMER ARRESTER Specification Sheet



3689 Arrowhead Drive, Carson City, NV 89706  
Phone (800) 854-3215 Fax (800) 243-1777  
E-mail sales@lspproducts.com Website www.lspproducts.com

Content matter is subject to change at any time. It is the user's responsibility to ensure the most updated revisions are obtained.

SP/S-2035 (10-06) Rev 2

Product Submittal	
Job Name	
Date	
Part Number	Quantity
Architect	
Contractor	

PART NO.	COLOR	DESCRIPTION
<b>WITH MIP VALVES</b>		
OB-817	White	Assembled
OB-817-T	White	Assembled with /Tract Pack
<b>WITH CPVC VALVES</b>		
OB-819	White	Assembled
OB-819-T	White	Assembled with /Tract Pack
<b>WITH PEX VALVES</b>		
OB-818	White	Assembled, PEX Valves
OB-818-T	White	Tract Pack
OB-820	White	3/8" PEX, 1/4" Comp
OB-821	White	3/8" PEX, 3/8" Comp
<b>WITH WIRSBO ProPEX VALVES</b>		
OB-824	White	Assembled
OB-824-T	White	Tract Pack
<b>WITH REHAU VALVES</b>		
OB-838	White	Assembled
OB-838-T	White	Tract Pack
OB-827	White	3/8" Rehau, 1/4" Comp
OB-828	White	3/8" Rehau, 3/8" Comp
<b>WITH KITEC VALVES</b>		
OB-861	White	Assembled
OB-861-T	White	Tract Pack



3689 Arrowhead Drive, Carson City, NV 89706  
 Phone (800) 854-3215 Fax (800) 243-1777  
 E-mail sales@lspproducts.com Website www.lspproducts.com

Content matter is subject to change at any time. It is the user's responsibility to ensure the most updated revisions are obtained.

SP/S-2035 (10-06) Rev 2

Product Submittal	
Job Name	
Date	
Part Number	Quantity
Architect	
Contractor	