

Installation Guide

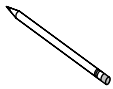
Undermounter Kit

K-5806, K-5807

THE BOLD LOOK
OF **KOHLER**®

1005563-2-D

Tools and Materials



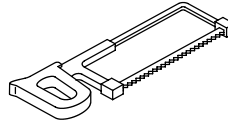
Pencil and
Marker



Measuring Tape



Drill



Hacksaw



Pliers



Safety Glasses



Phillips
Screwdriver

Thank You For Choosing Kohler Company

We appreciate your commitment to Kohler quality. Please take a few minutes to review this manual before you start installation. If you encounter any installation or performance problems, please don't hesitate to contact us. Our phone numbers and website are listed on the back cover. Thanks again for choosing Kohler Company.

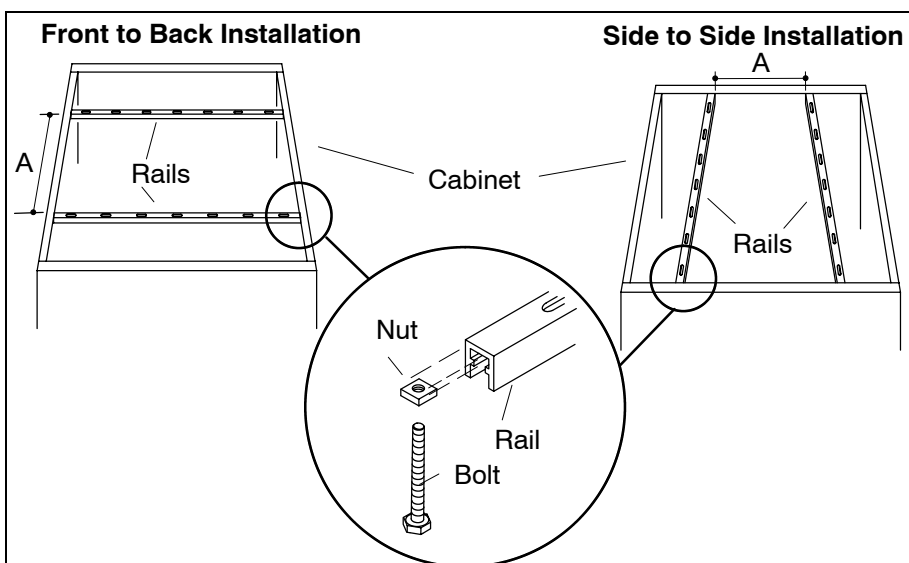
Before You Begin

- ☐ Refer to the Homeowners Guide to determine all necessary components for your installation.
- ☐ Remove the components from the carton and inspect them for damage.
- ☐ Observe all local plumbing and building codes.

1. Mounting Dimensions

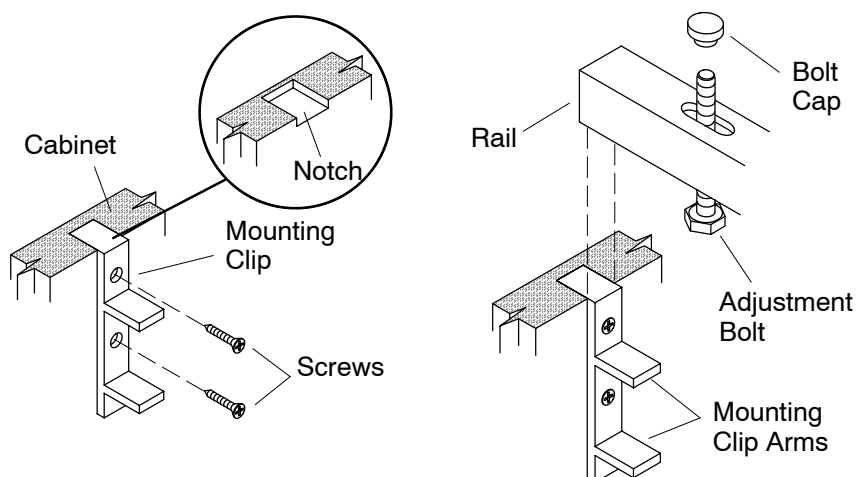
Mounting Dimensions for Specific Kohler Sink Applications

Model	Sink Name	Inside Distance between Rails, Side to Side Installation	Inside Distance between Rail, Front to back installation
K-3179	Undertone	6-1/2" (16.5cm)	20-1/4" (51.4cm)
K-3187	Undertone	Not Recommended	31-1/4" (80.6cm)
K-3188	Undertone	Not Recommended	41-1/4" (104.8cm)
K-3189	Undertone	Not Recommended	58-1/4" (148cm)
K-3330	Undertone	16-1/8" (41cm)	14-7/16" (36.7cm)
K-3331	Undertone	16-1/8" (41cm)	14-7/16" (36.7cm)
K-3332	Undertone	21-5/8" (54.9cm)	16-1/8" (41cm)
K-3333	Undertone	9-7/16" (24cm)	16-1/8" (41cm)
K-3334	Undertone	14-7/16" (36.7cm)	19-7/16" (49.4cm)
K-3335	Undertone	18-1/4" (46.4cm)	18-1/4" (46.4cm)
K-3336	Undertone	14-1/8" (35.9cm)	15-3/4" (40cm)
K-3337	Undertone	14-1/8" (35.9cm)	18-1/4" (46.4cm)
K-3338	Undertone	9-5/8" (24.4cm)	15-3/4" (40cm)
K-3340	Undertone	21-5/8" (54.9cm)	16-1/8" (41cm)
K-3350	Undertone	Not Recommended	16-5/8" (42.2cm)
K-3351	Undertone	Not Recommended	16-5/8" (42.2cm)
K-3352	Undertone	Not Recommended	16-5/8" (42.2cm)
K-3376	Undertone	17-1/2" (44.5cm)	34-1/2" (87.6cm)
K-3387	Poise	16-3/4" (42.5cm)	31-3/4" (80.6cm)
K-3388	Poise	16-3/4" (42.5cm)	31-3/4" (80.6cm)
K-3389	Poise	16-3/4" (42.5cm)	31-3/4" (80.6cm)
K-3391	Poise	16-3/4" (42.5cm)	16-3/4" (42.5cm)
K-5834-3U	Bakerfield	28-13/16" (73.2cm)	19-13/16" (50.3cm)
K-5877-4U	Lakefield	31-13/16" (80.8cm)	20-13/16" (52.9cm)
K-5879-5U	Cilantro	34-13/16" (88.4cm)	20-13/16" (52.9cm)
K-5882L-4U	Cardamom	31-13/16" (80.8cm)	20-13/16" (52.9cm)
K-5882R-4U	Cardamom	31-13/16" (80.8cm)	20-13/16" (52.9cm)
K-5896-2U	Brookfield/Entree	31-13/16" (80.8cm)	20-13/16" (52.9cm)
K-5898-4U	Brookfield/Entree	31-13/16" (80.8cm)	20-13/16" (52.9cm)
K-6584	Iron/Tones	15-13/16" (40.2cm)	17-5/8" (44.8cm)
K-6585	Iron/Tones	23-1/8" (58.7cm)	17-5/8" (44.8cm)
K-6586	Iron/Tones	10-13/16" (27.5cm)	17-5/8" (44.8cm)
K-6587	Iron/Tones	19-5/8" (49.8cm)	19-5/8" (49.8cm)
K-6606	Oceanview	Not Recommended	47-2/3" (121.1cm)



1. Determine the Mounting Position

- ☐ Depending on how the Undermounter will be installed, determine the front-to-back or side-to-side length of the inside of the cabinet.
- ☐ If necessary, cut the Undermounter rails to 1/2" (1.3cm) less than the determined length.
- ☐ Thread the adjusting bolts into the nuts two turns and then slide the nuts into the slot in the rails. Slide the nut and bolt into the position desired in the openings of the rails.
- ☐ Determine the exact positioning of the mounting clips. Consult the dimensional information to determine Dimension A. The rails may run from the front to back or from side to side of the opening.
- ☐ Mark the screw placement on the cabinet.
- ☐ Drill 1/8" (3mm) starter holes where marked.



2. Install the Undermounter

NOTE: Depending upon the cabinet style, you may need to notch the top of the cabinet frame for the mounting clips so they sit flush with top of cabinet.

- ☐ Thread the mounting clips into the side of the cabinet.
- ☐ Lower the rail onto the mounting clip arms. Use the arm best suited to the thickness of the sink ledge.

NOTE: If the rails will be installed on the lower arms you may need to break off the top arm with a pair of pliers to avoid interference with the sink.

- ☐ Attach the bolt caps to the bolts.
- ☐ Carefully lower sink onto the undermounter rails.
- ☐ Use the adjustment bolts to raise and level the sink flush with the underside of the countertop.

NOTE: Caulk should be used where the sink comes into contact with the underside of the countertop.

USA: 1-800-4-KOHLER
Canada: 1-800-964-5590
Mexico: 001-877-680-1310
kohler.com

THE BOLD LOOK
OF **KOHLER®**

© 2003 Kohler Co.

1005563-2-D