

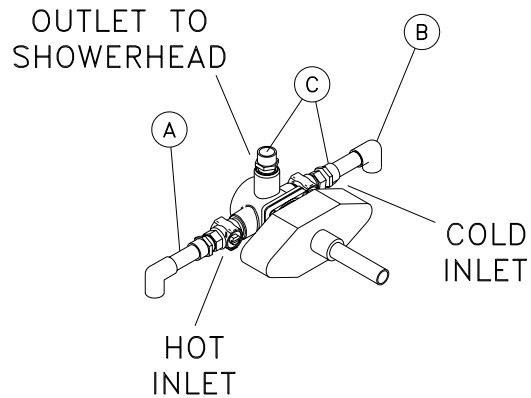


**Installation Instruction for Valves: DFPHY
Trim Application: Pressure Balance Shower**

Since 1959
2937 North Ontario Street • Burbank • California • 91504
(818) 955-7740 • FAX (818) 955-7790
www.doralfe.com

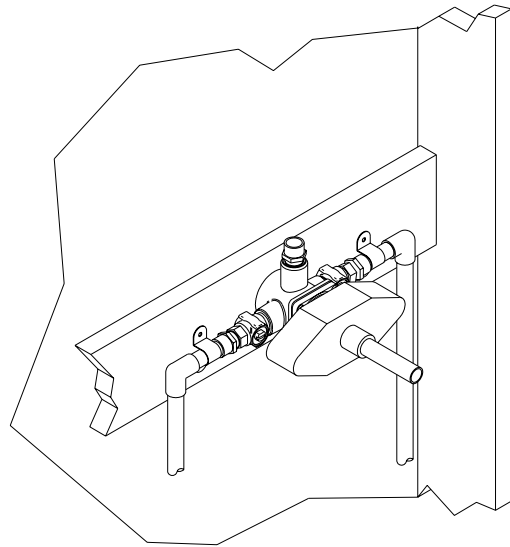
A Phylrich International Company

Step 1



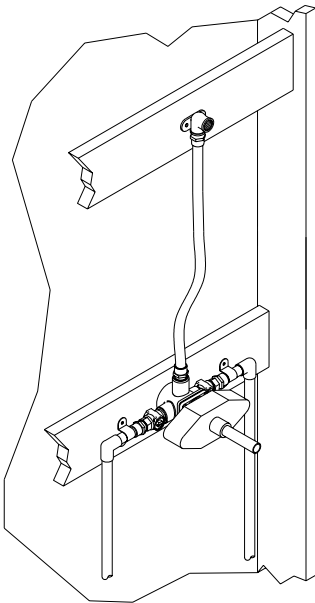
Attach copper lines (A) and elbows (B) using $\frac{1}{2}$ " male adaptor (C) to the valve as needed. Do not apply heat directly on valves. Excessive heat will damage rubber and plastic seals and will void the warranty.

Step 2



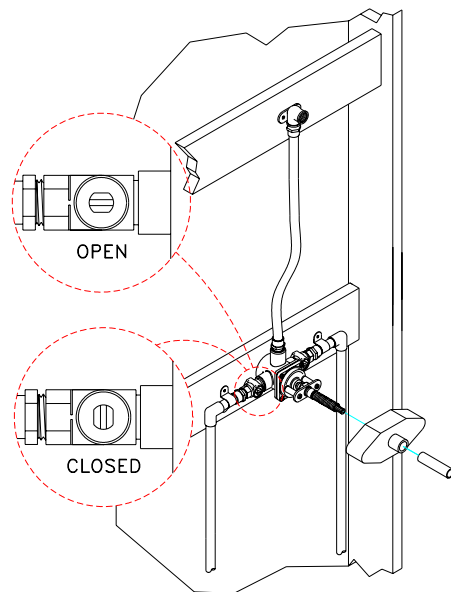
Refer to page P-6 to determine the proper rough in for the valve. Install crossbeams at those locations and secure valve. Connect valve inlets to hot and cold water supplies.

Step 3



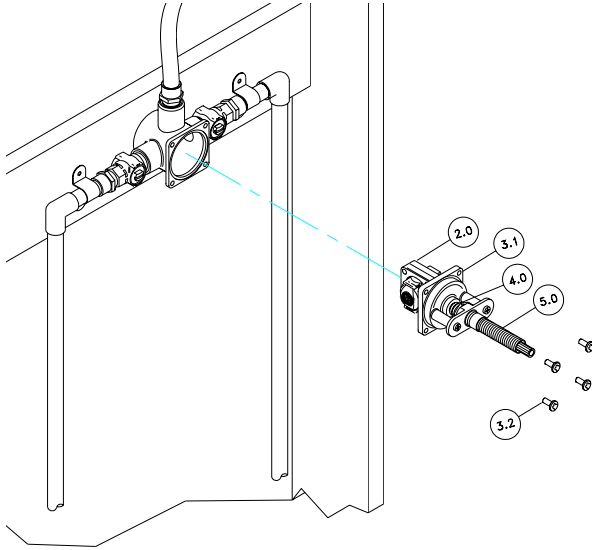
Determine the location for the showerhead. Install a crossbeam and secure a brass elbow.

Step 4



Remove tile guide and thread protectors. (Do not discard.) Close integral stops. Pressurize both hot and cold supplies.

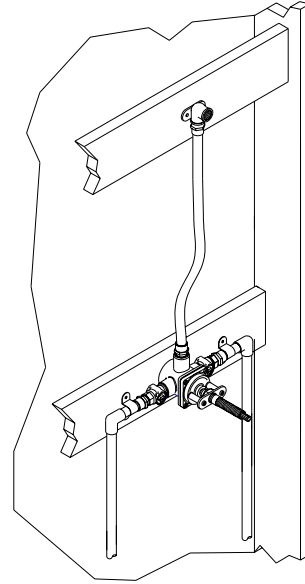
Step 5



Remove valve cover screws (#3.2). Pull stem assembly (#5.0), valve cover (#3.1) and cartridge (#2.0) as one complete unit. It is very important that this entire assembly be returned in the same configuration for the valve to function properly. Open integral stop to flush supply lines.

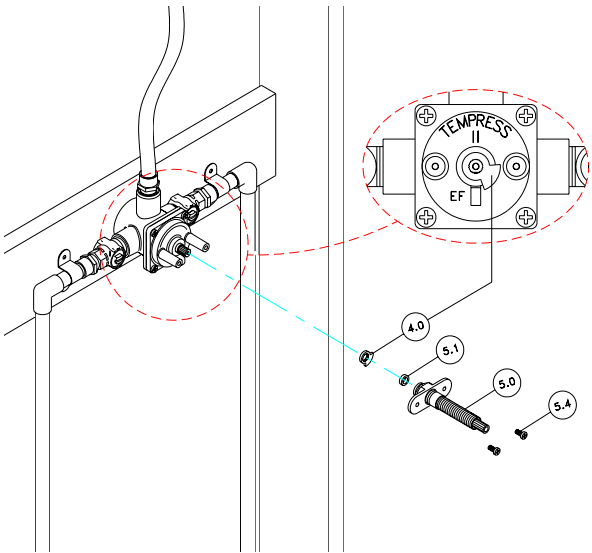
Failure to complete this step will void the warranty.

Step 6



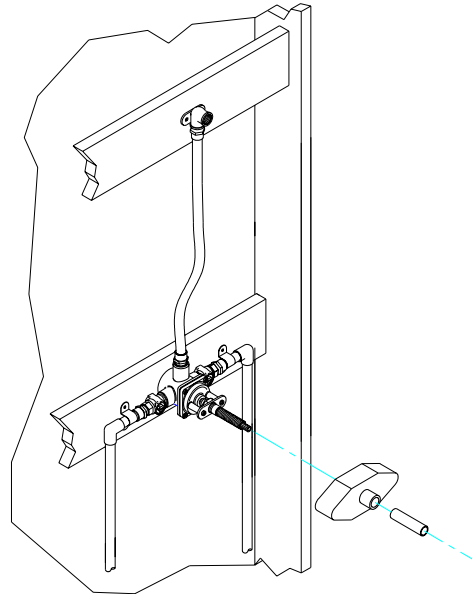
Close integral stop and reinstall cartridge, cover and stem assembly. **PRESSURE TEST THE VALVE.** Water pressure must be applied to both hot and cold inlets at the same time to pressure test this valve. Check all connections for leaks.

Step 7



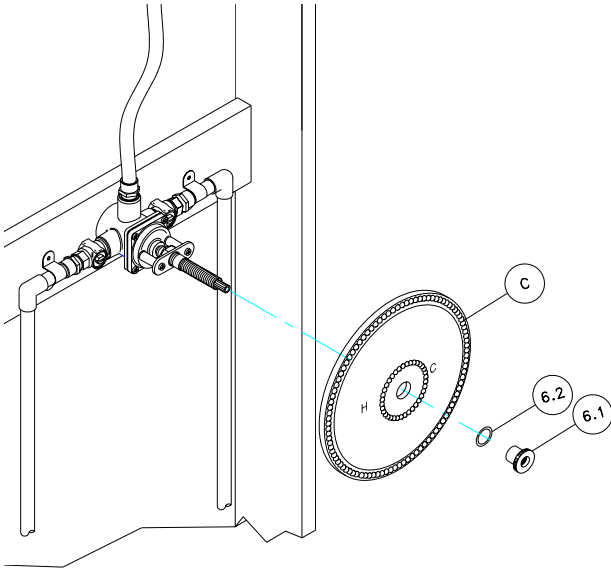
Should water drip from the outlet, remove stem assembly (#5.0) and mechanical stop (#4.0). Rotate cartridge stem clockwise until it stops. Reposition mechanical stop so that it is on the right side of the valve cover stop. Reattach stem assembly. Close integral stops and reinstall tile guide and thread protectors. Wall is ready to be closed. (Note: allow adequate access to cartridges).

Step 8



Once the finished wall has been completed, remove tile guide and thread protectors. Open integral stops.

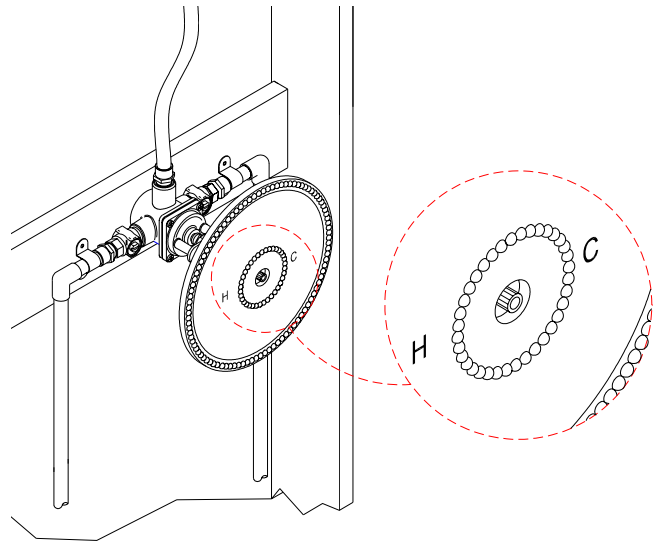
Step 9



Note: trim parts will vary according to series. Position escutcheon plate (A) so that the “H” and “C” are parallel to the floor and secure with escutcheon nut (#6.1) with o-ring (#6.2). Tighten nut so that the plate cannot be rotated.

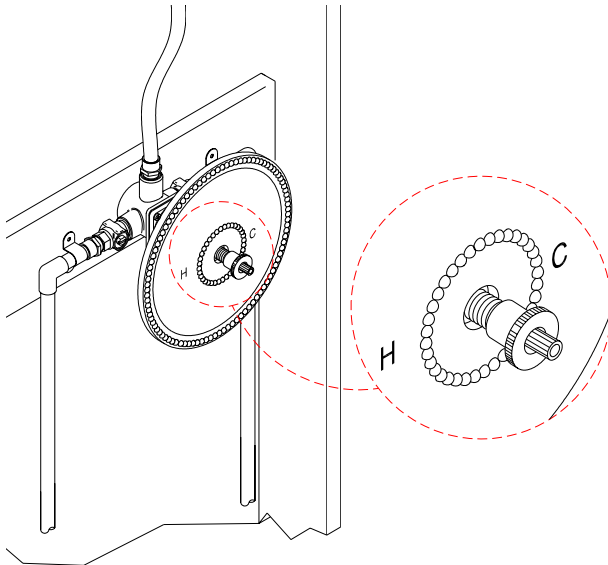
If there are no threads for the nut to catch, see Step 9a.
If nut will not bottom out, see Steps 9b and 9c.

Step 9a



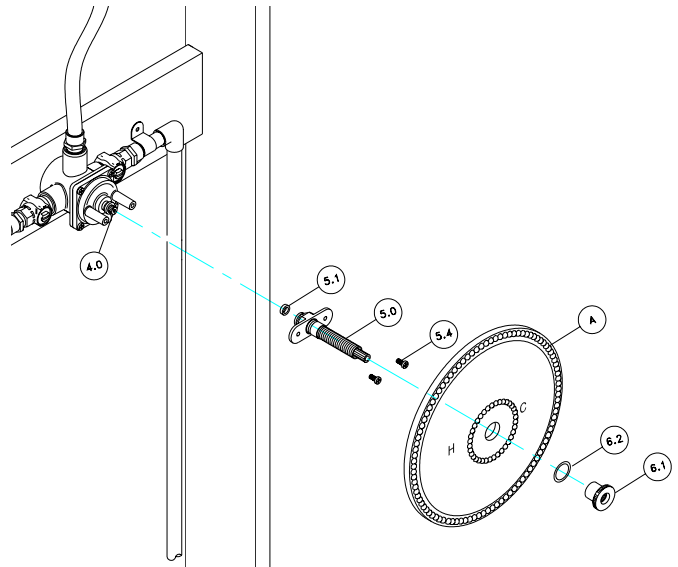
If the valve is installed too deep behind the wall, extension stems are available. Please contact your local distributor to order part number EXT-WALL.

Step 9b



The handle stem and all-thread nipple may be trimmed if the valve was installed too far out of the wall. To determine the amount to be trimmed, measure the gap between the escutcheon plate and the knurled edge of the escutcheon nut.

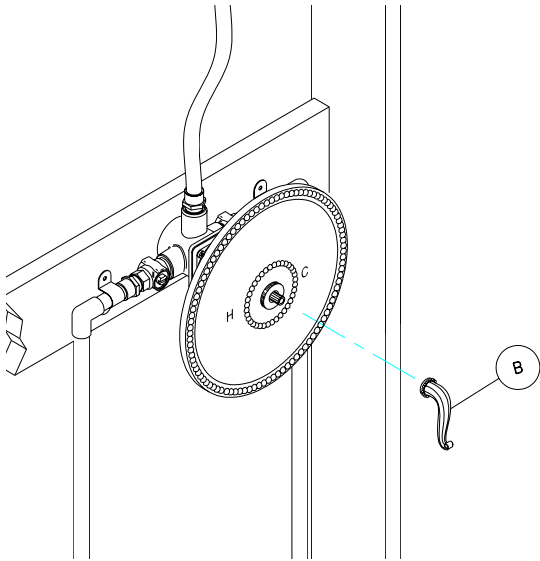
Step 9c



Remove the nut (#6.1), O-ring (#6.2) and escutcheon plate (A). Remove stem assembly (#5.0) including aluminum bracket. Do not remove temperature limit stop (#4.0). Make appropriate cuts.

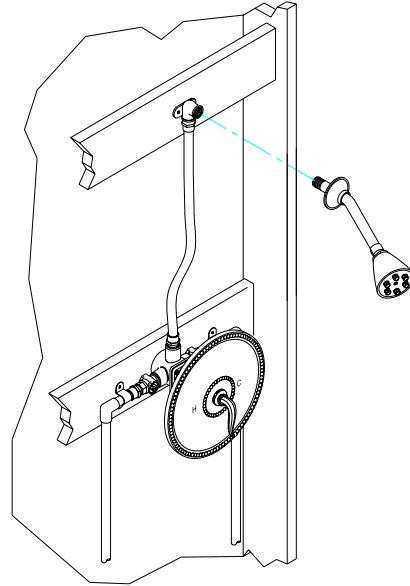
Reinstall stem assembly, plate and secure nut as in Step 9.

Step 10



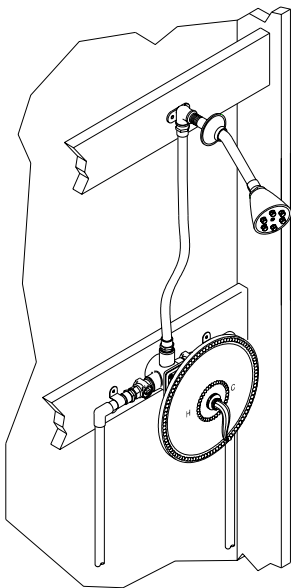
Attach handle (B) to stem. Position the handle so that the lever is in the 5:00 position (please refer to template attached to the plate). Secure the handle with $\frac{1}{4}$ -20 screw or setscrews provided.

Step 11



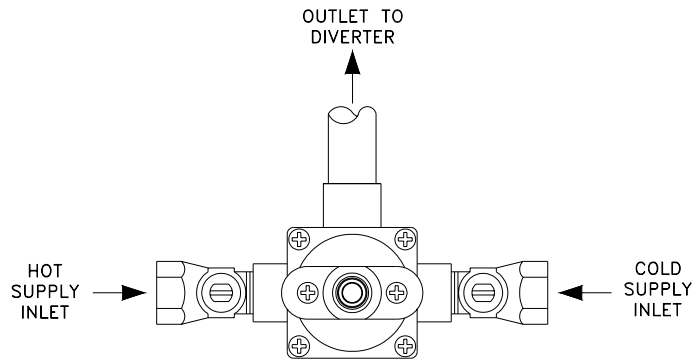
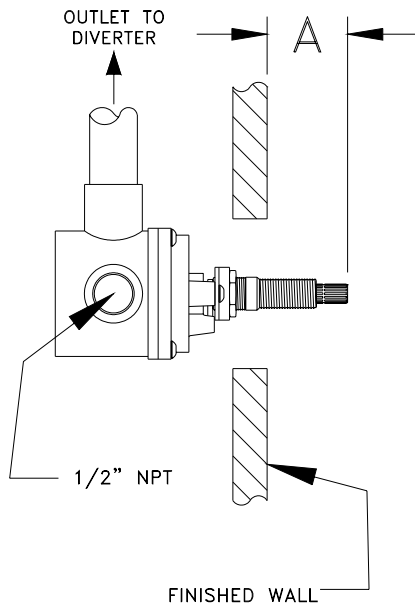
Apply Teflon tape to both ends of the 8" shower arm. Attach showerhead to long side of shower arm. Insert short end of arm into flange. Attach shower arm to brass elbow. Check connections for leaks. Slide the flange against the wall.

Step 12



The shower set is now ready for use.

Pressure Balancing Mixing Valve



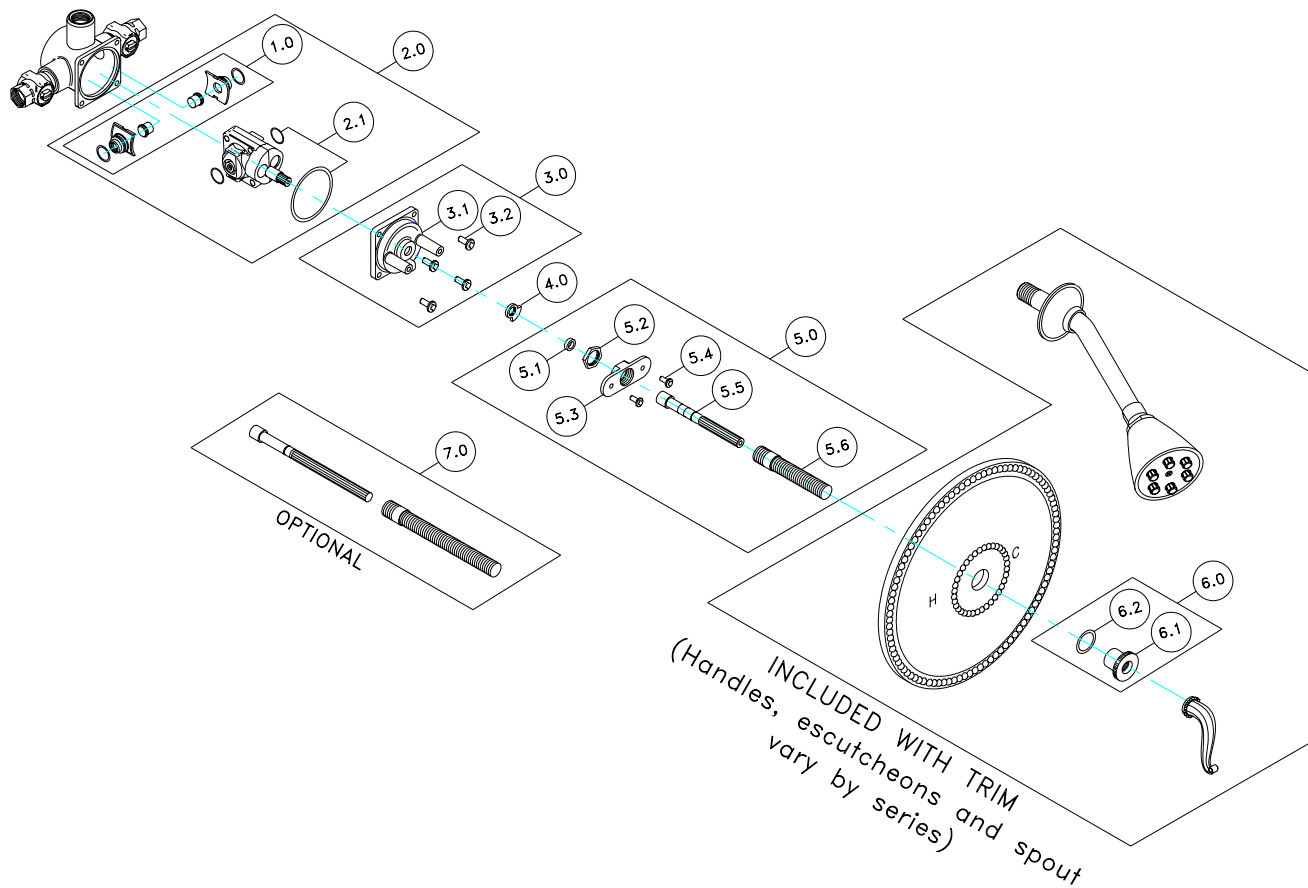
ROUGH IN SPECIFICATIONS FOR PRESSURE BALANCING MIXING VALVE
ALL PHYLRICH VALVE INSTALLATIONS MUST FOLLOW
THE MEASUREMENTS FOR “A” LISTED BELOW.
PLEASE CONSULT THE TRIM NUMBER FOR THE CORRECT ROUGH IN DIMENSION.

<u>PRODUCT</u>	<u>ROUGH IN</u>	<u>PRODUCT</u>	<u>ROUGH IN</u>	<u>PRODUCT</u>	<u>ROUGH IN</u>	<u>PRODUCT</u>	<u>ROUGH IN</u>
PB3101	1-3/8"	PB3171	1-1/8"	PB3273	1-3/8"	PB3370	1-3/8"
PB3109	1-1/4"	PB3180	1-3/8"	PB3274	1-3/8"	PB3371	1-3/8"
PB3110	1-1/4"	PB3181	1-3/8"	PB3280	1-3/8"	PB3372	1-3/8"
PB3120	1-1/4"	PB3183	1-3/8"	PB3291	1-1/4"	PB3373	1-3/8"
PB3120A	1-1/4"	PB3184	1-3/8"	PB3291A	1-1/4"	PB3374	1-3/8"
PB3121	1-1/4"	PB3190	1-1/4"	PB3310	1-3/8"		
PB3121A	1-1/4"	PB3190A	1-1/4"	PB3311	1-3/8"		
PB3123	1-3/8"	PB3191	1-1/4"	PB3314	1-3/8"		
PB3135	1-1/4"	PB3191A	1-1/4"	PB3330	1-3/8"		
PB3137	1-3/8"	PB3211	1-3/8"	PB3331	1-3/8"		
PB3137SF	1-3/8"	PB3230	1-3/8"	PB3332	1-3/8"		
PB3141	1-3/8"	PB3231	1-3/8"	PB3333	1-3/8"		
PB3144	1-3/8"	PB3234	1-3/8"	PB3334	1-3/8"		
PB3158A	1-1/4"	PB3240	1-3/8"	PB3337	1-3/8"		
PB3158B	1-1/4"	PB3241	1-3/8"	PB3337SF	1-3/8"		
PB3158C	1-1/4"	PB3242	1-3/8"	PB3338A	1-3/8"		
PB3158D	1-1/4"	PB3243	1-3/8"	PB3338B	1-3/8"		
PB3158F	1-1/4"	PB3244	1-3/8"	PB3338C	1-3/8"		
PB3160	1-1/4"	PB3251	1-1/4"	PB3338D	1-3/8"		
PB3161	1-1/4"	PB3261	1-1/4"	PB3338F	1-3/8"		
PB3162	1-1/4"	PB3270	1-3/8"	PB3341	1-3/8"		
PB3163	1-1/4"	PB3271	1-3/8"	PB3360	1-3/8"		
PB3170	1-1/8"	PB3272	1-3/8"	PB3361	1-3/8"		

Doralfe®

DPB3100	1-7/8"
DPB3102	2"
DPB3103	1-7/8"
DPB3111	1-7/8"
DPB3200	1-7/8"
DPB3202	1-7/8"
DPB3203	1-7/8"
DPB3211	1-7/8"
DPB3220	1-7/8"
DPB3221	1-7/8"
DPB3222	1-7/8"
DPB3223	1-7/8"

DFPHY: Pressure Balance Mixing Valve



Description

1.0) Check Valve	5.2) Brass Lock Nut
2.0) Pressure Balance Cartridge	5.3) Aluminum Bracket
2.1) Cartridge O-ring Kit	5.4) Bracket Screw, M4 x 10 mm (2 Required)
3.0) Valve Cover Kit (Cover, Screws and O-ring)	5.5) Stem Extension
3.1) Valve Cover	5.6) Escutcheon Nipple
3.2) Valve Cover Screws, 10-32 (4 Required)	6.1) Escutcheon Nut
4.0) Temperature Limit Washer	6.2) O-Ring, AS5568A-115
5.0) Pressure Balance Mounting Kit	7.0) 6.5" Wall Stem Extension (Optional)
5.1) Nylon Friction Washer	

Please contact your local distributor for questions after installation.