

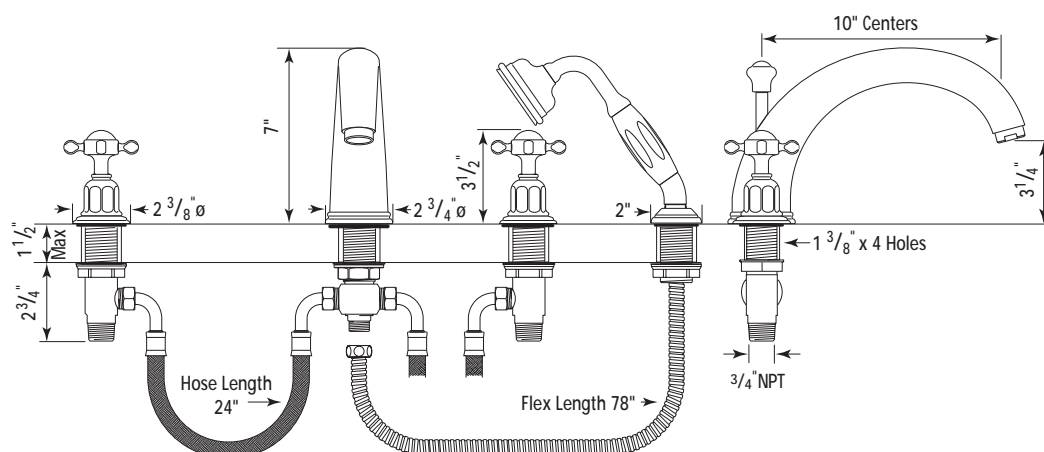
## Specification

PERRIN & ROWE  
MAYFAIR LONDON

### U.3249X

#### 10" Four Hole Tub Set with Crosshead Handles.

- 1/4 turn ceramic disc flow control
- Vernier insert for accurate handle alignment
- Unique handle construction with integral bearing ring
- IAPMO approved



#### Finishes

- Polished Chrome
- Polished Nickel
- Satin Nickel
- Inca Brass
- Polished Chrome/Inca Brass
- Satin Nickel/Inca Brass
- Polished Nickel/Inca Brass

#### Packed Weight:

6Kg / 13 1/4 lbs

#### Temp Range:

Min 1°C / 34°F

Max 85°C / 185°F

#### Recommended working pressure:

Min 1 bar / 15psi

Max 5 bar / 75 psi

# Specification

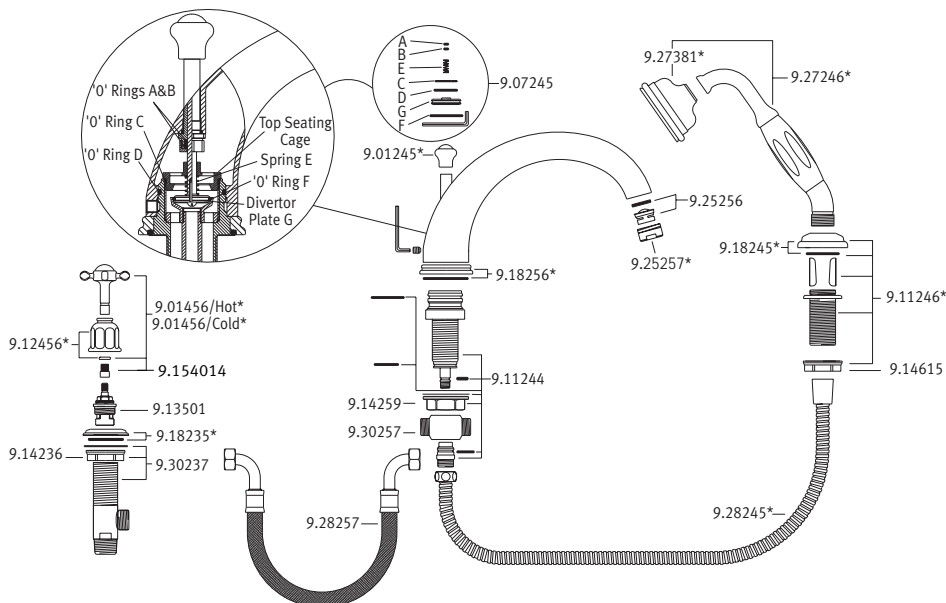
**PERRIN & ROWE**  
MAY FAIR LONDON

## U.3249X

### 10" Four Hole Tub Set with Crosshead Handles.

- 1/4 turn ceramic disc flow control ● Vernier insert for accurate handle alignment ●
- Unique handle construction with integral bearing ring ● IAPMO approved

Where \* Indicated Specify Color.



### Parts Breakdown