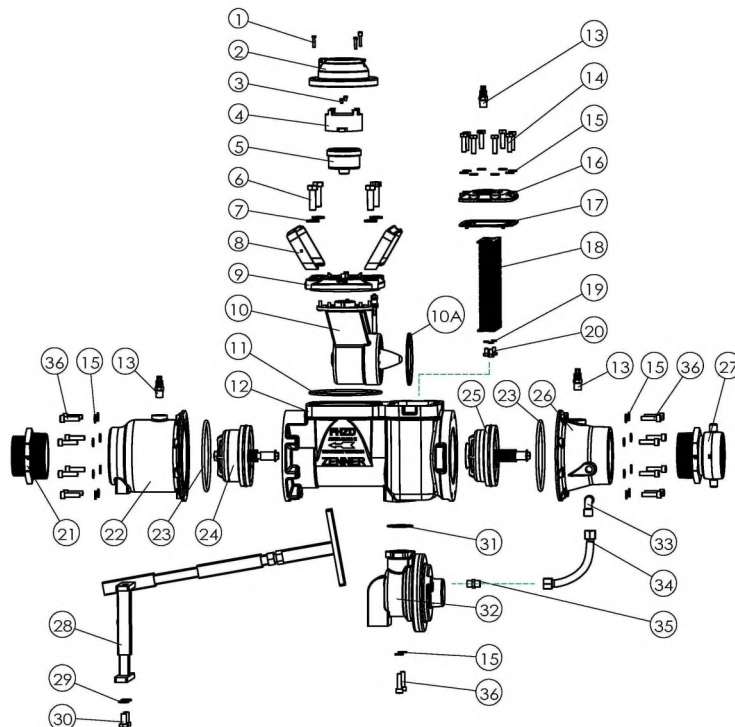


ZENNER FHZD Fire Hydrant Backflow Meter with RPZ

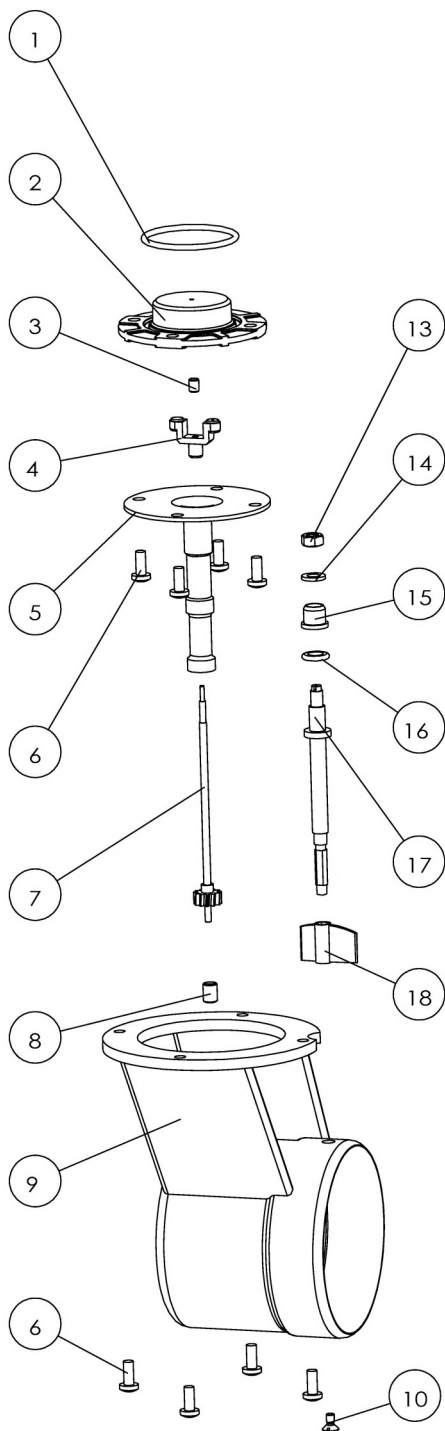
Parts List for Model FHZD30S (Size 3")

| ITEM | PART NUMBER | DESCRIPTION | QTY | ITEM | PART NUMBER | DESCRIPTION | QTY |
|------|------------------|--------------------------------------|-----|-------------|----------------|--------------------------------------|-----|
| 1A | .04C20MSPS | Screw Slot Pan SS M4-0.7 x 20 | 2 | 18 | FHZD-STR-SCR | FHZD Strainer Screen Assembly, SS | 1 |
| 1B | .04C20MSPS-DH | Screw Slot Pan SS M4-0.7 x 20, DH | 1 | 19 | .06C10WLSS | Washer Lock SS M6 | 3 |
| 2 | FHZ-CVRA-XB | FHZ Brass Shroud and Lid Assembly | 1 | 20 | .06C10HCSS | Bolt Hex Cap SS M6-1 x 10 | 3 |
| 2A | PM-RCVR-XB | Register Cover, Brass | 1 | 21 | NP2530B | Nipple 2.5"NH x 3"MIP, Brass | 1 |
| 2B | PINOBR-098-100 | Register Cover Hinge Pin | 1 | 22 | FHZD-RHSG-PBL5 | FHZD Rear Housing | 1 |
| 2C | FHZ-SHR-B | FHZ Brass Shroud | 1 | 23 | 006-0355-4 | O-Ring, Housing Front & Rear Seal | 2 |
| 3 | .04C6MPPS | Screw Phil Pan SS M4-0.7 x 6 | 2 | 24 | 3507-300A | 3" Check Valve #2 | 1 |
| 4 | FHZ-REG-RR | FHZ Register Retaining Ring, Plastic | 1 | 25 | 3707-300 | 3" Check Valve #1 | 1 |
| 5-CF | FHZ03-REG-CF | FHZ Register, 3", Cubic Feet | 1 | 26 | FHZD-FHSG-PBL5 | FHZD Front Housing | 1 |
| 5-CM | FHZ03-REG-CM | FHZ Register, 3", Cubic Meters | 1 | 27 | SW2530B-STR | Swivel 2.5"SW x 3"MIP w/ Strainer | 1 |
| 5-US | FHZ03-REG-US | FHZ Register, 3", U.S.Gallon | 1 | 27A | SWG25-187 | Swivel Gasket for 2-1/2" Swivel | 1 |
| 6A | .12C40HCSS | Bolt Hex Cap SS M12-1.75 x 40 | 3 | 28 | ZHSD-STAND | FHZD/FHD Hydrant Meter Stand | 1 |
| 6B | .12C40HCSS-DH | Bolt Hex Cap SS M12-1.75 x 40, DH | 1 | 29 | .10N20WSHS | Washer Flat SS M12 x 20 OD | 2 |
| 7 | .12N20WSHS | Washer Flat SS M12 x 20 OD | 4 | 30 | .10C25HCSS | Bolt Hex Cap SS M10-1.5 x 25 | 2 |
| 8 | FHZ-HNDL-DS | FHZ Double Handle, SS | 2 | 31 | 006-0032-4 | O-Ring EPDM 1/16 W 1.864 ID | 1 |
| 9 | FHZ-CVRPL-PBL5 | FHZ Cover Plate, Flat, Blue P.C. | 1 | 32 | 3707-CU | Control Unit | 1 |
| 10 | FHZ-MEC | FHZ Measuring Element Components | 1 | 33 | 3707-38C | Fitting, Elbow, 1/4NPT x 3/8 Comp | 1 |
| 10A | FHZ-ME-FS | FHZ Measuring Element Front Seal | 1 | 34-1 | SFC-509-PP | Sensing Tube 3/8x3/8x9 Long Version | 1 |
| 11 | FHZ-CVRPL-ORING | FHZ Cover Plate O-Ring | 1 | 34-2 | KFC-507-PP | Sensing Tube 3/8x3/8x7 Short Version | 1 |
| 12 | FHZD-HSG-PBL5 | FHZD Meter Housing | 1 | 35 | 5758A-36 | Sensing Tube Fitting | 1 |
| 13 | 14-860FT | Test Cock, 1/4", Brass, w/Cap | 3 | 36 | .08C30CCSS | Bolt Socket Cap SS M8-1.25 x 30 | 18 |
| 14A | .08C30HCSS | Bolt Hex Cap SS M8-1.25 x 30 | 6 | Misc | SEAL-TMP-PMT | Seal, Tamper, Twist-Lock | 1 |
| 14B | .08C30HCSS-DH | Bolt Hex Cap SS M8-1.25 x 30, DH | 2 | | 002-6330 | Tamper Seal Wire | 1 |
| 15 | .08N16WSHS | Washer Flat SS M8 x 16 OD | 26 | | FHZD03N-UME-CF | Complete FHZD Unitized Measuring | |
| 16 | FHZD-STRCVR-PBL5 | FHZD Strainer Cover | 1 | | FHZD03N-UME-CM | Element Assembly, includes items | |
| 17 | FHZP-STR-GSKT | FHZP Strainer Gasket | 1 | | FHZD03N-UME-US | 1,2,3,4,5,9,10,10A, and 11 | |



ZENNER FHZD Fire Hydrant Backflow Meter with RPZ

Measuring Element Parts List for Model FHZD30S (Size 3")



| ITEM | PART NUMBER | DESCRIPTION | QTY |
|----------|------------------|--------------------------------------|-----|
| 10 | FHZ-MEC | FHZ Measuring Element Components | |
| 10-1 | FHZ-ME-UBA-ORING | O-Ring, Upper Bearing Assembly | 1 |
| 10-2 | FHZ-ME-UBA | Upper Bearing Assembly | 1 |
| 10-3 | | Upper Transmission Bearing | 1 |
| 10-4/5/7 | FHZ-ME-TC | Transmission Coupling Shaft Assembly | |
| 10-4 | | Magnet Component | 1 |
| 10-5 | | Transmission Coupling Shaft Housing | 1 |
| 10-6 | | Screw, Pan Head, SS | 8 |
| 10-7 | | Transmission Shaft Gear | 1 |
| 10-8 | | Lower Transmission Bearing | 1 |
| 10-9 | FHZ-ME-CAGE | FHZ Measuring Element Cage | 1 |
| 10-10 | | Screw, Flat Head, SS | 1 |
| 10-11 | FHZ-ME-ROTOR | FHZ Rotor Assembly | 1 |
| 10-12 | FHZ-ME-SV | FHZ Straightening Vane | 1 |
| 10-13 | | Nut, SS | 1 |
| 10-14 | | Washer, SS | 1 |
| 10-15 | | Bushing, Brass | 1 |
| 10-16 | | Sealing Ring | 1 |
| 10-17 | | Calibration Shaft | 1 |
| 10-18 | | Calibration Vane | 1 |

