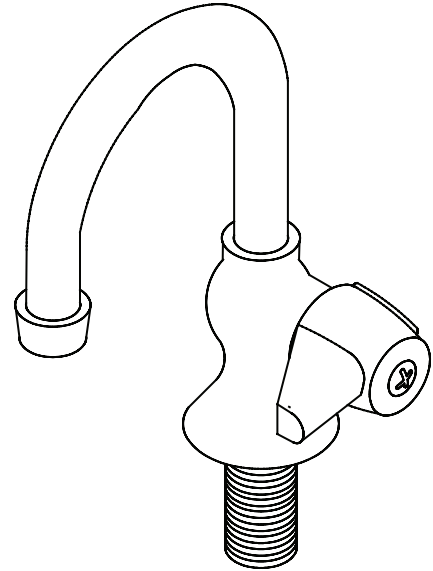


**MODEL NOS.**  
**0281-AC or 0281-AH**  
**BAR FAUCET**

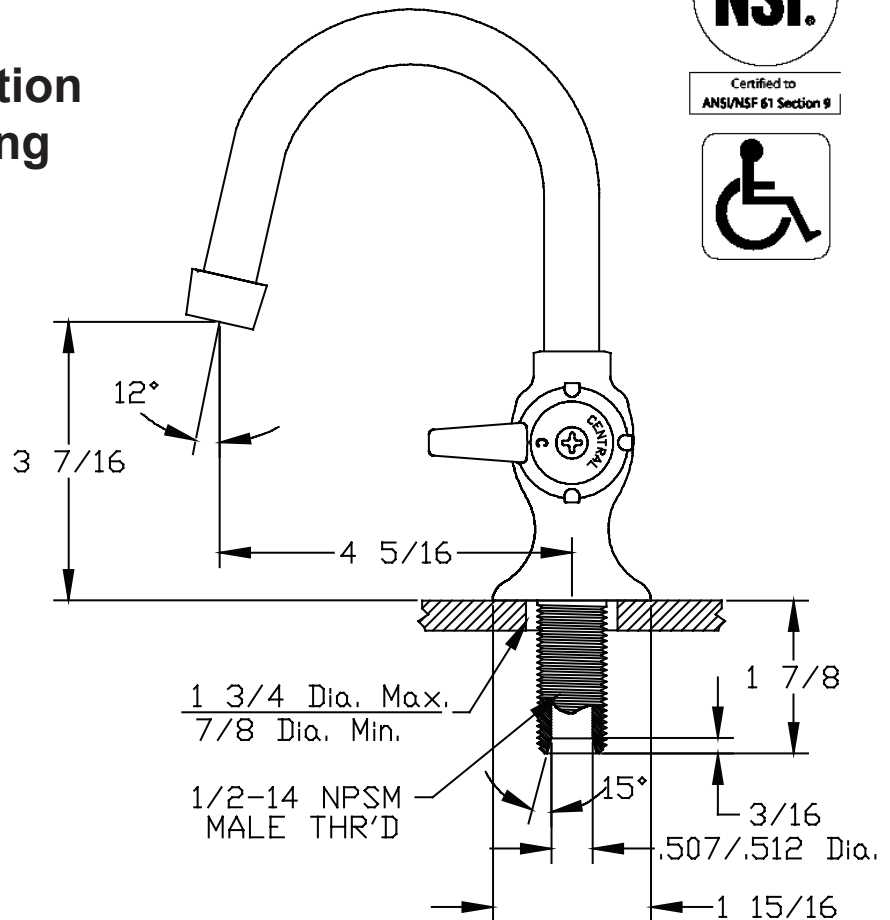
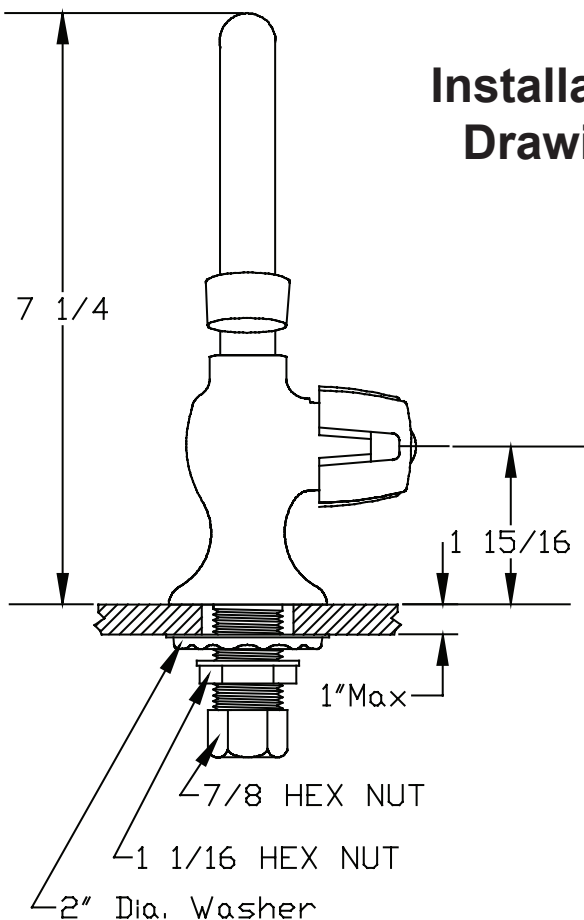
**0281-AC (Cold)**  
**0281-AH (Hot)**

The single handle bar faucet has a cast brass body that is copper, nickel and chrome plated. The compression stems are all brass with a double O-Ring seal and rubber seat washer. The canopy handle is zinc die cast with a chrome plated finish with either a C (cold) or H (hot) index. The rigid gooseneck spout is brass with a chrome plated finish and is fitted with a water saving aerator that limits the flow rate. The O-Rings and seals are rubber.

Flow Rate: 2.0 GPM @ 60 psi  
ADA Compliant and Meets ASME A112.18.1M  
ANSI/NSF 61/Section 9 Certified



## Installation Drawing



# Central Brass

C O M P A N Y

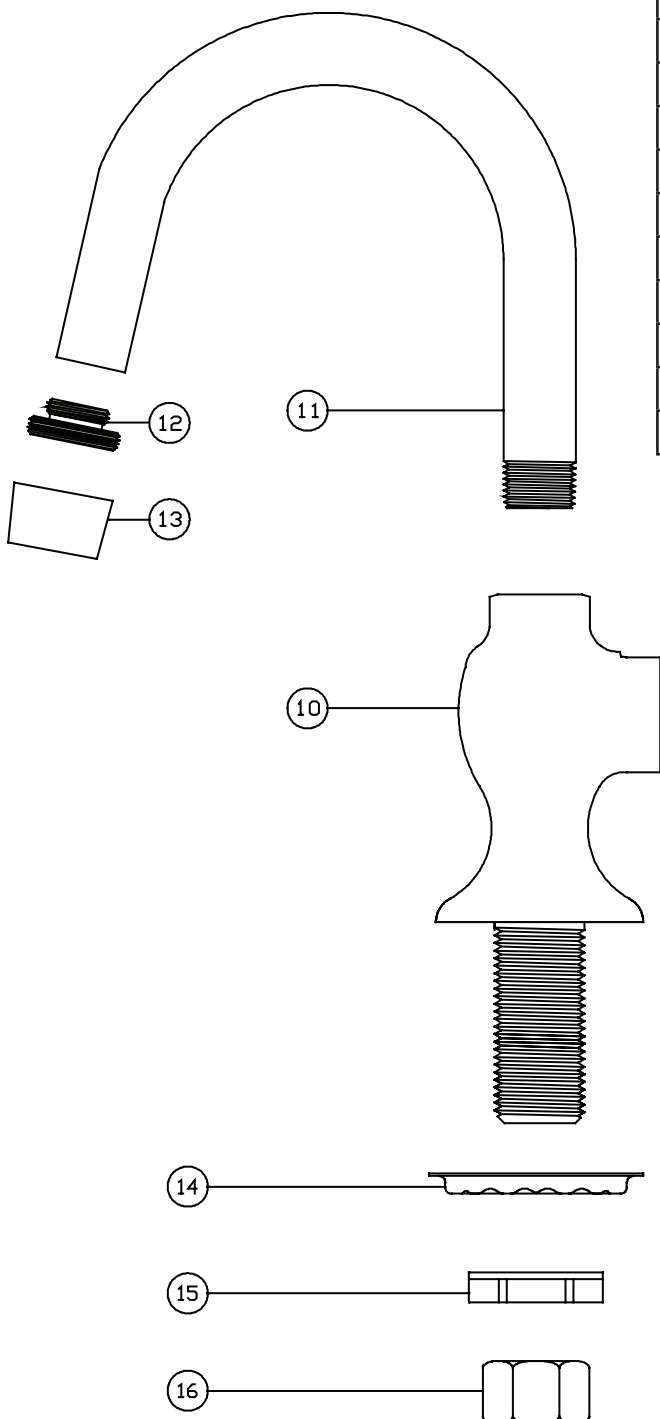
Brecksville, Ohio 44141

Phone: (216) 883-0220 Fax: (440) 526-5745

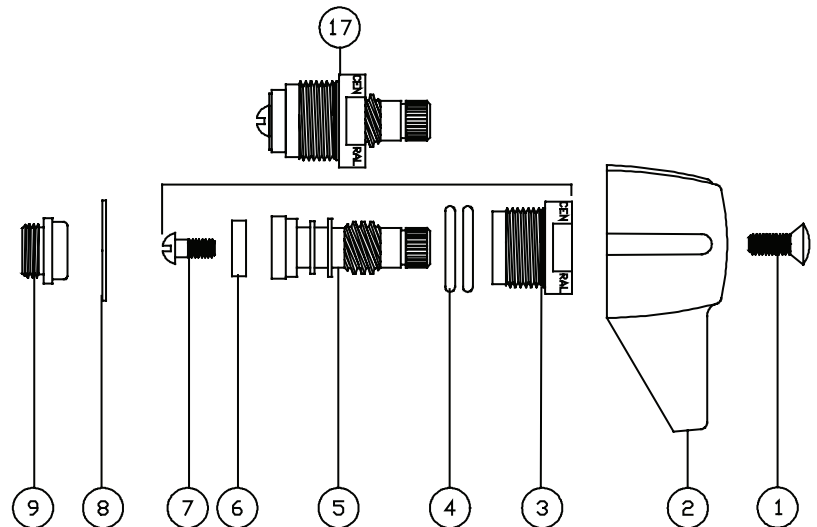
www.CentralBrass.com

**MODEL NOS.**  
**0281-AC or 0281-AH**  
**BAR FAUCET**

## Parts Breakdown



#	Part #	Description
1	107-F	Brass Phillips Head Screw
2	523-C	Handle Indexed "C"
2	523-H	Handle Indexed "H"
3	453-EWC	Brass Left Thread O-Ring Bonnet
4	1038-453	O-Ring
5	453-FL	Brass Left Thread O-Ring Stem
6	901-WNN	Seat Washer
7	104	Brass Seat Washer Screw
8	1028-Y	Nylon Gasket
9	263-BC	Bronze Seat
10	2904-1136	Brass Faucet Body
11	PF-157-D	Brass Rigid Gooseneck Spout
12	PF-166-U	Brass Spout End Adapter
13	30-M	Female Aerator
14	54	Steel Crowfoot Washer
15	7133-AZ	Zinc Dichromate Locknut
16	4015-BARP	Brass Coupling Nut
17	SU-453-EL	Left Thread O-Ring Stem Assembly



The parts listed in the parts breakdown above may not be offered separately as replacement parts. Please review the Replacement Parts page for the authorized replacement parts that are available for this item.