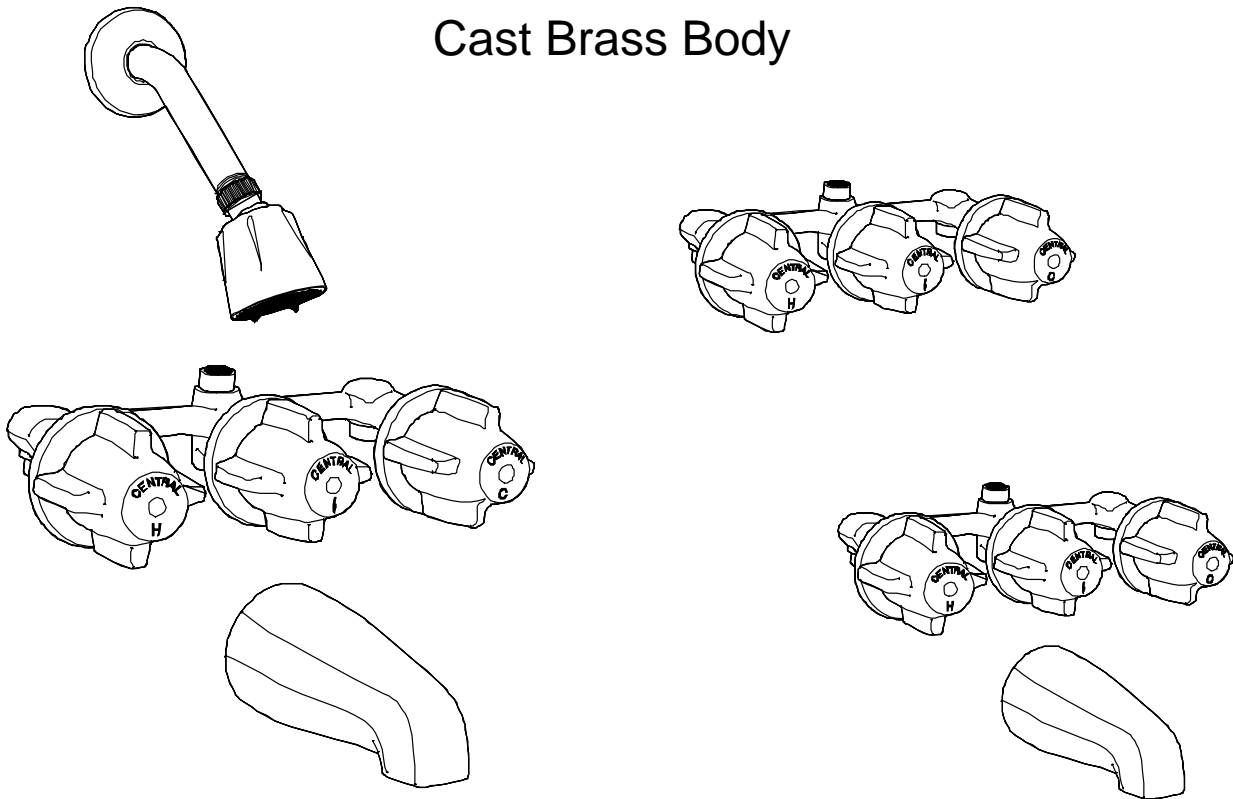


Central Brass®

The Easy Choice

THREE-VALVE BATH & SHOWER

Cast Brass Body



8" Centers, Direct Sweat, Compression Stems, Replaceable Seats

0850 Series	Bath Valve only
0858 Series	Bath Valve with Spout
0868 Series	Bath Valve with Spout & Shower

Bath Valve with Ceramic Stems and Spout & Shower

80868 Series	8-inch Centers, Direct Sweat
--------------	------------------------------

CENTRAL BRASS MFG CO

2950 East 55th Street, Cleveland, Ohio 44127

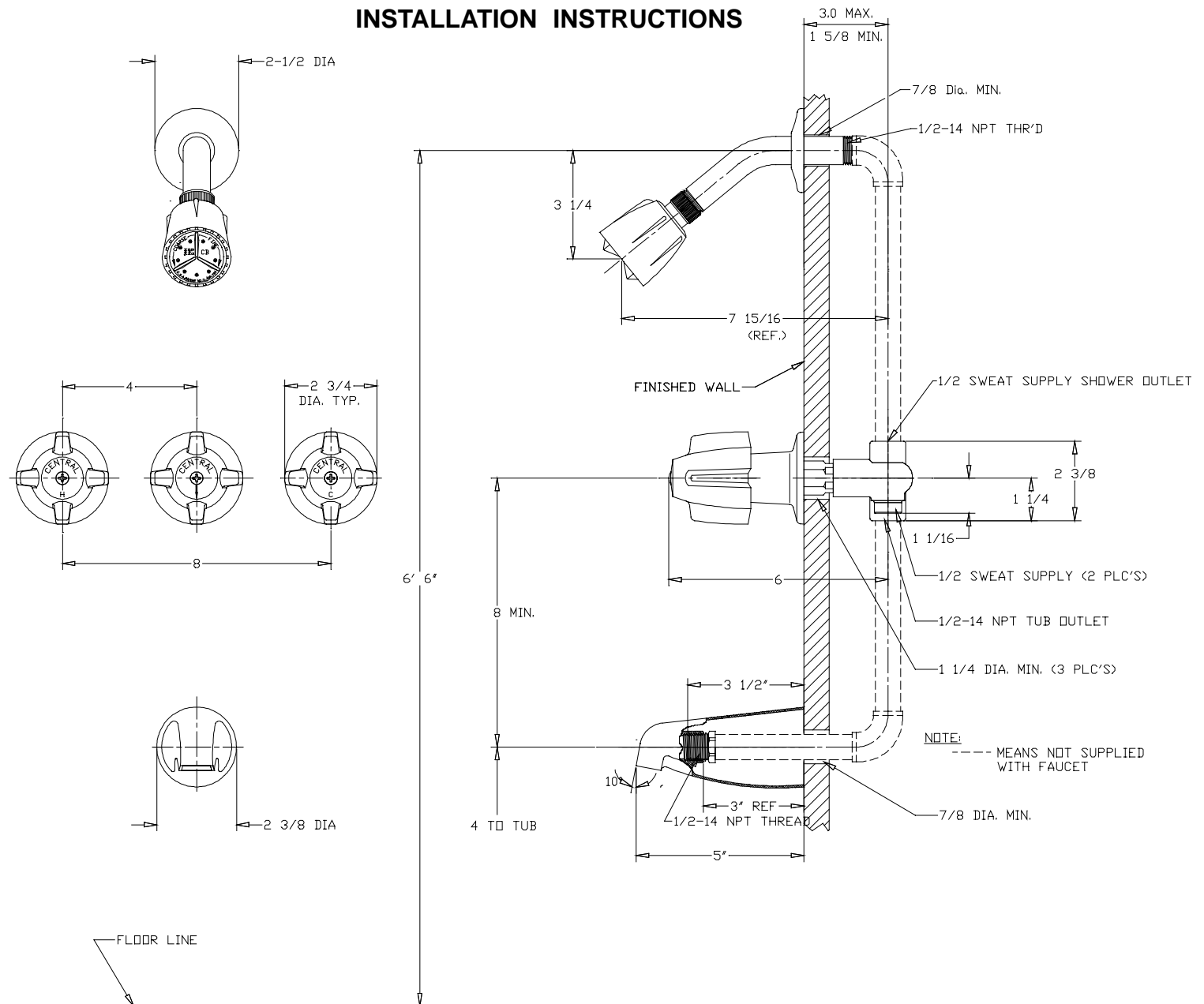
Phone: 216-883-0220

Fax: 216-883-0875

Email: sales @CentralBrass.com

www.CentralBrass.com

INSTALLATION INSTRUCTIONS



Roughing In Instructions

1. Locate and install valve assembly as shown.
2. Connect hot and cold supply lines.
3. Fabricate and install line for showerhead and spout.
4. Anchor fittings to studs in proper location.
5. Test for operation and leakage before finishing wall.
6. Install protectors on all exposed fittings.

Finishing Instructions

1. Remove fitting protectors.
2. Apply putty as required to prevent water damage to wall.
3. Install finished trim.
4. Test for operation and leakage.

NOTE: Flush waterlines to remove debris before installation.

CENTRAL BRASS MFG CO

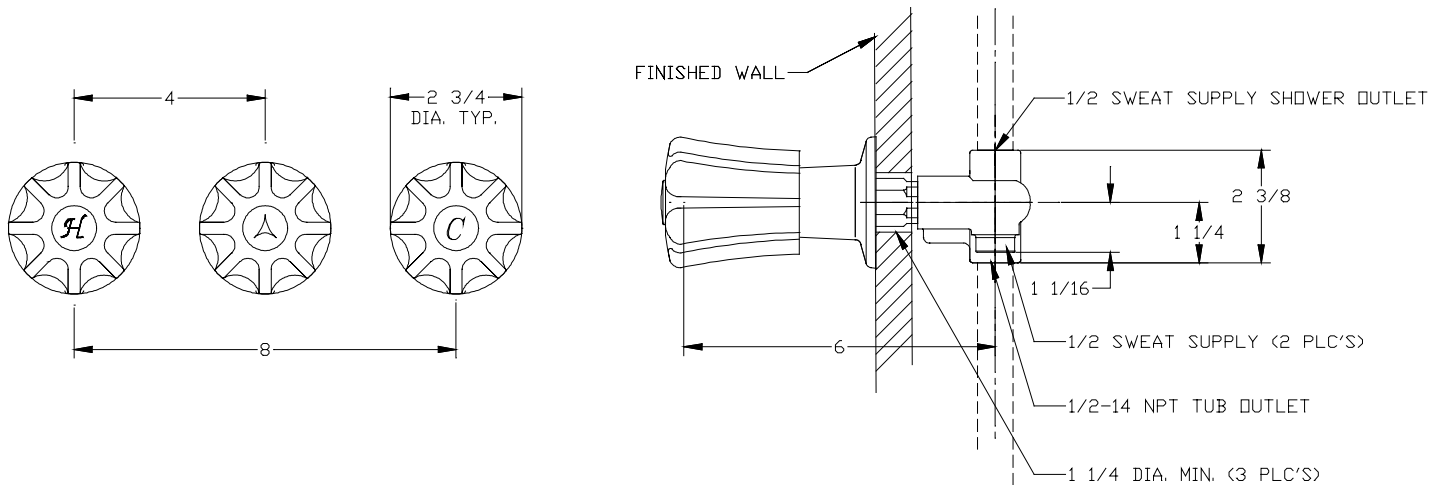
2950 East 55th Street, Cleveland, Ohio 44127

Phone: 216-883-0220

Fax: 216-883-0875

Email: sales @CentralBrass.com

80 - Silver Crown Handle Suffix



CAUTION for Compression Stem Assemblies

Soldered connections should be made with valve stems OPEN. DO NOT overheat. Let valve assembly cool after connection is made before closing valve stems

WARNING for Ceramic Stem Assemblies

Remove hot and cold stem units before soldering. Failure to do so will result in damage to ceramic stem units. Cool valve assembly after solder connections are completed before reinstalling ceramic stem assemblies.

CENTRAL BRASS MFG CO

2950 East 55th Street, Cleveland, Ohio 44127

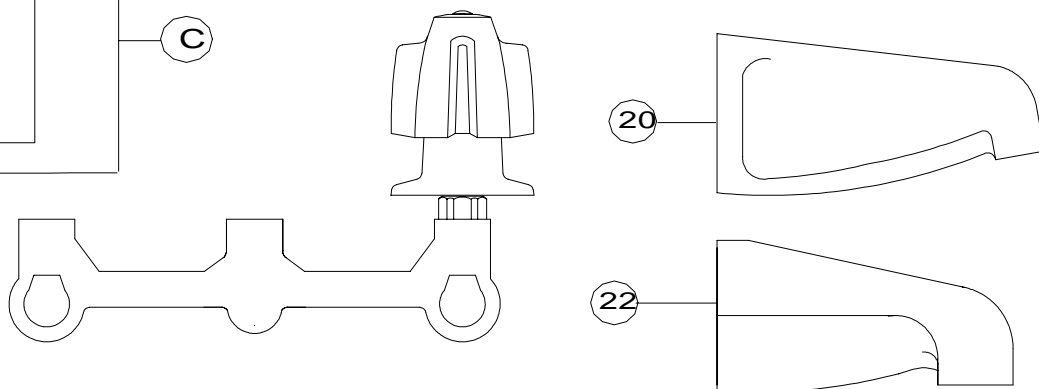
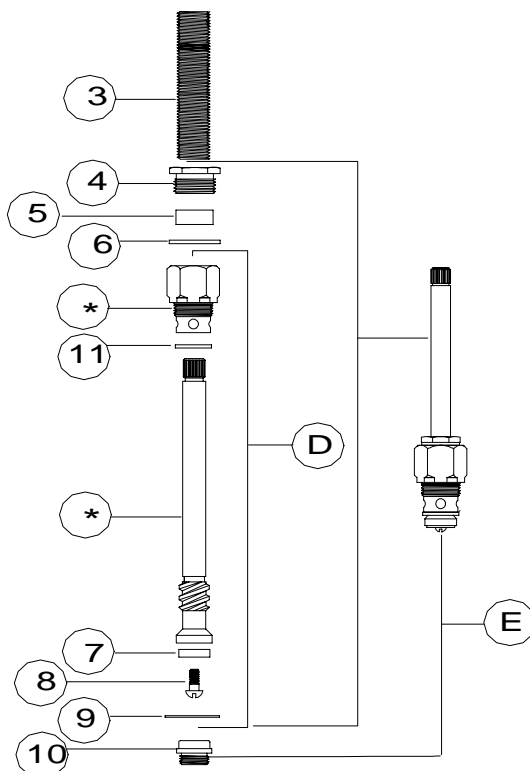
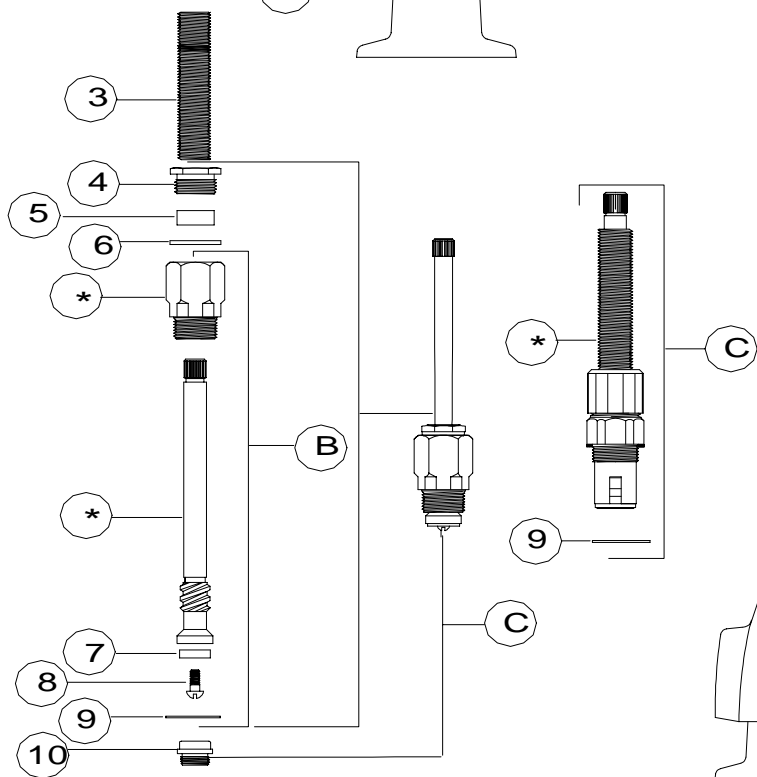
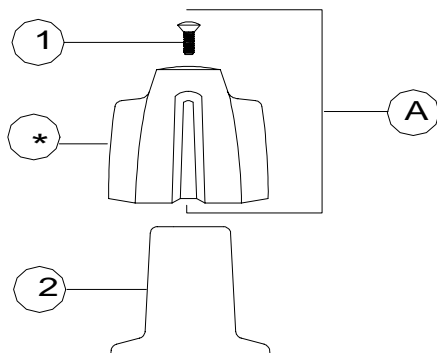
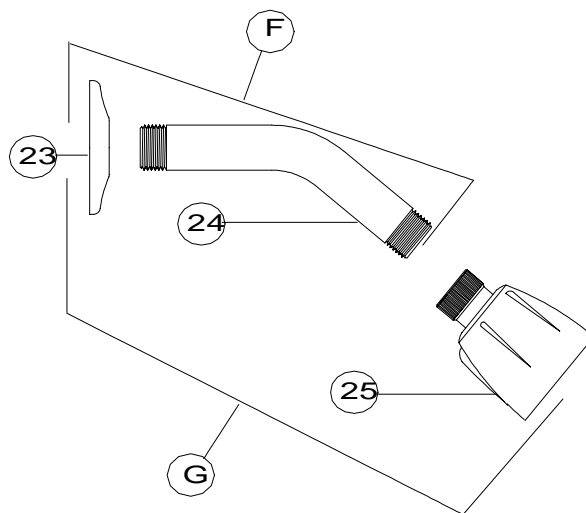
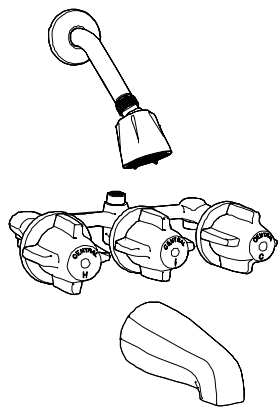
Phone: 216-883-0220

Fax: 216-883-0875

Email: sales @CentralBrass.com

www.CentralBrass.com

REPLACEMENT PARTS



* These items are not offered individually and must be purchased as a group or unit. Please contact Central Brass for more information.

CENTRAL BRASS MFG CO

2950 East 55th Street, Cleveland, Ohio 44127

Phone: 216-883-0220

Fax: 216-883-0875

Email: sales @CentralBrass.com

REPLACEMENT PARTS

#	Part #	Description
A	G-508-C	Large Canopy Handle indexed C with Screw (X107-F)
A	G-508-H	Large Canopy Handle indexed H with Screw (X107-F)
A	G-508-D	Large Canopy Handle indexed with Arrow for Diverter with Screw (X107-F)
B	G-1549-CT	Corner Stem & Bonnet Group with Seat Washer (X901-WN) & Screw (X104) for 0850,0858 & 0868 only
C	K-3-CT	Complete Corner Stem Assembly with Gasket (X1028-Y) & Bronze Seat (X263-BC) for 0850,0858 & 0868 only
C	K-351-C	Ceramic-disc Stem Cartridge Hot with Gasket (1028-Y) for item 80868 only
D	G-1588-CT	Diverter Stem & Bonnet Group with Seat Washer (X901-WN) & Screw (X104)
E	K-3-DT	Complete Diverter Stem Assembly with Gasket (X1028-Y) & Bronze Seat (X263-BC)
F	3007-6	6-inch Shower Arm (714-WT-02) & Flange (X1035-SS)
G	G-3113-6	Shower Head (3034-1/2-02), 6-inch Shower Arm (714-WT-02) & Flange (X1035-SS)
1	X107-F	Handle Screw (25 pcs per pack)
2	521-B	Escutcheon
3	X269-29/16	2 ⁹ / ₁₆ Long Nipple (10 pcs per pack)
4	X765-TA	Packing Nut (6 pcs per pack)
5	X814-BA	Packing (10 pcs per pack)
6	X4-L	Packing Washer (6 pcs per pack)
7	X901-WNN	Seat Washer (25 pcs per pack)
8	X104	Seat Washer Screw (25 pcs per pack)
9	X1028-Y	Gasket (25 pcs per pack)
10	XPF-263-B	Replacement Seat (4 pcs per pack)
11	X4-N	Celcon Washer for diverter stem (6 pcs per pack)
20	3145-D	½ IPS Brass Spout for item 0908 only
22	3154-Z	Zamak Spout for item 0908-Z only
23	X1035-SS	Shower Arm Flange (10 pcs per pack)
24	714-WT-02	6-inch Shower Arm
25	3034-1/2-02	Shower Head 2.5 GPM
	T-3	Handle Trim Set with C, H & Arrow indexed canopy handles with screws and three escutcheons packed in a box

- If faucet has round handles (G-508) or (80 suffix) , use two K-351-C Cold stem assemblies
- If faucet has lever handles, use one Hot and one Cold stem assemblies

CENTRAL BRASS MFG CO

2950 East 55th Street, Cleveland, Ohio 44127

Phone: 216-883-0220 Fax: 216-883-0875 Email: sales @CentralBrass.com

OPTIONS & REPLACEMENT PARTS

Suffix Number	Replaces Item #	Part Number	Description
80	A	K-505-1C	Silver Crown Acrylic Handles with indexed C metal button (G-503-M-02)
		K-505-1H	Silver Crown Acrylic Handles with indexed H metal button (G-503-M-02)
		K-505-1D	Silver Crown Acrylic Handles with indexed Arrow metal button (503-MD) for diverter
		X126-625B	Handle Screw for Acrylic Handles suffix 80 (6 pcs per pack)
		G-503-M-02	Metal indexed buttons C & H for Acrylic Handles suffix 80 (one pair per pack)
		503-MD	Metal button indexed with an arrow for diverter handle (1 pc)
	10	X263-BC	Bronze Replacement Seat (10 pcs per pack) for 0850,0858 & 0868 only
	H	3007-8	8-inch Shower Arm (714-WT-02) & Flange (X1035-SS)
	F	G-3113-8	8-inch Shower Arm (714-WT-02), Shower Head (3034-1/2-02) & Flange (X1035-SS)
		Accessories	
		G-1548-ET	Stem Extension with Screw (X105-F)
		X105-F	Screw for stem extension (4 pcs per pack)
Prefix Number	Replaces Item #	Part Number	Description
8	C	K-351-C	Ceramic-disc Stem Cartridge Cold with Gasket (X1028-Y)
8	C	K-351-H	Ceramic-disc Stem Cartridge Hot with Gasket (X1028-Y)
		Only for	80868

- If faucet has round handles (G-508) or (80 suffix) , use two K-351-C Cold stem assemblies
- If faucet has lever handles, use one Hot and one Cold stem assemblies

CENTRAL BRASS MFG CO

2950 East 55th Street, Cleveland, Ohio 44127

Phone: 216-883-0220 Fax: 216-883-0875 Email: sales @CentralBrass.com

CENTRAL BRASS MAINTENANCE INSTRUCTIONS

DISASSEMBLY	REPLACEMENT
<div data-bbox="365 365 841 436"> 1 REMOVE HANDLE <ol style="list-style-type: none"> 1. Turn off water supply 2. Remove the handle screw & handle 3. Unscrew the escutcheon </div> <div data-bbox="365 562 812 751"> </div>	<div data-bbox="841 365 1279 541"> 4 <p style="text-align: center;">Use Only Central Replacement Parts</p> </div> <div data-bbox="841 604 1331 1066"> <div style="display: flex; justify-content: space-around;"> <div style="text-align: center;"> K-3-CT </div> <div style="text-align: center;"> K-351-C </div> <div style="text-align: center;"> K-3-DT </div> </div> </div>
<div data-bbox="365 772 841 844"> 2 REMOVE STEM ASSEMBLY <ol style="list-style-type: none"> 1. Use adjustable wrench. 2. Turn stem to open position 3. Unscrew counterclockwise. Remove stem unit. </div> <div data-bbox="332 970 820 1138"> </div>	<div data-bbox="841 1108 1279 1192"> K-3-DT NOTE: Turn stem counterclockwise to hold the white celcon washer in position when installing. </div> <div data-bbox="841 1213 1279 1318"> NOTE: If replacing compression units with ceramic units make sure PF-263-B seat is removed from body before installing stem units. </div> <div data-bbox="841 1348 1279 1411"> <p style="text-align: center;">Replace components In reverse order of disassembly</p> </div>
<div data-bbox="365 1159 841 1230"> 3 REMOVE SEAT <ol style="list-style-type: none"> 1. Insert 5/16" allen wrench in seat. 2. Turn seat (counterclockwise) to remove. </div> <div data-bbox="267 1276 824 1486"> <p style="text-align: center;">Use a 5/16" Allen Wrench</p> <p style="text-align: center;">For compression stems only</p> </div>	

- If faucet has round handles (G-508) or (80 suffix) , use two K-351-C Cold stem assemblies
- If faucet has lever handles, use one Hot and one Cold stem assemblies

CENTRAL BRASS MFG CO
 2950 East 55th Street, Cleveland, Ohio 44127
 Phone: 216-883-0220 Fax: 216-883-0875 Email: sales @CentralBrass.com