

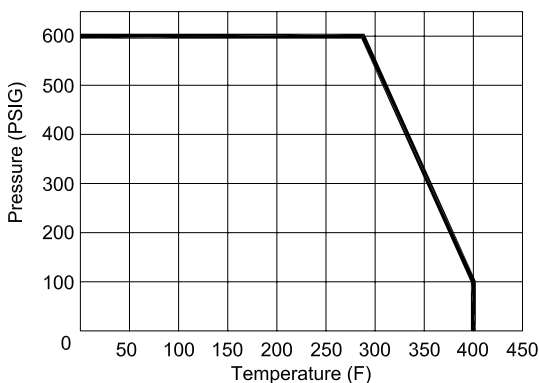
## 2 PC FULL PORT 600 WOG 3/4" HOSE CONNECTION BALL VALVE

**Features:**

- 3/4" Hose Connection by:
  - Female Pipe Thread (Fig. 426A)
  - Sweat End (Fig. 427A)
  - Male Pipe Thread (Fig. 428A)
- 600 WOG\*
- Full Port
- PTFE Seats
- Forged Brass Body & End Cap
- Meets MSS SP-110 Standards
- Blow-out Proof Stem
- Adjustable Packing
- Includes Cap, Cap Gasket, and Chain
- Maximum Cap Pressure is 50 PSI\*\*
- Optional Lock Lever Kit
- Optional Stem Extension Kit
- Optional Tee Handle Kit
- Optional Oval Handle Kit
- Optional Memory Stop Kit

\* The pressure/temperature ratings indicated are for the valve body only. Hose side ratings are dependent on the type of hose connected by others.  
 \*\* The included cap is rated to 50 PSI maximum. The primary purpose of the cap is for protection of the hose connection threads. For safety concerns, removal under pressure is not recommended.

**NOT FOR USE AT OR BELOW GROUND LEVEL**



**Figure Number Matrix**

FNW 4 2 End A Size	
END CONNECTION	SIZE CODE
FNPT = 6	1/2" = D
SWEAT = 7	3/4" = F
MNPT = 8	

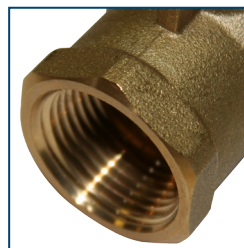


Figure 426A - FNPT

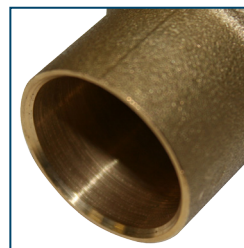


Figure 427A - SWEAT

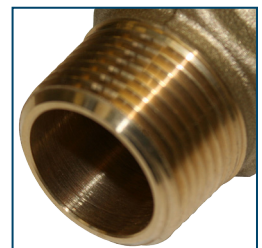


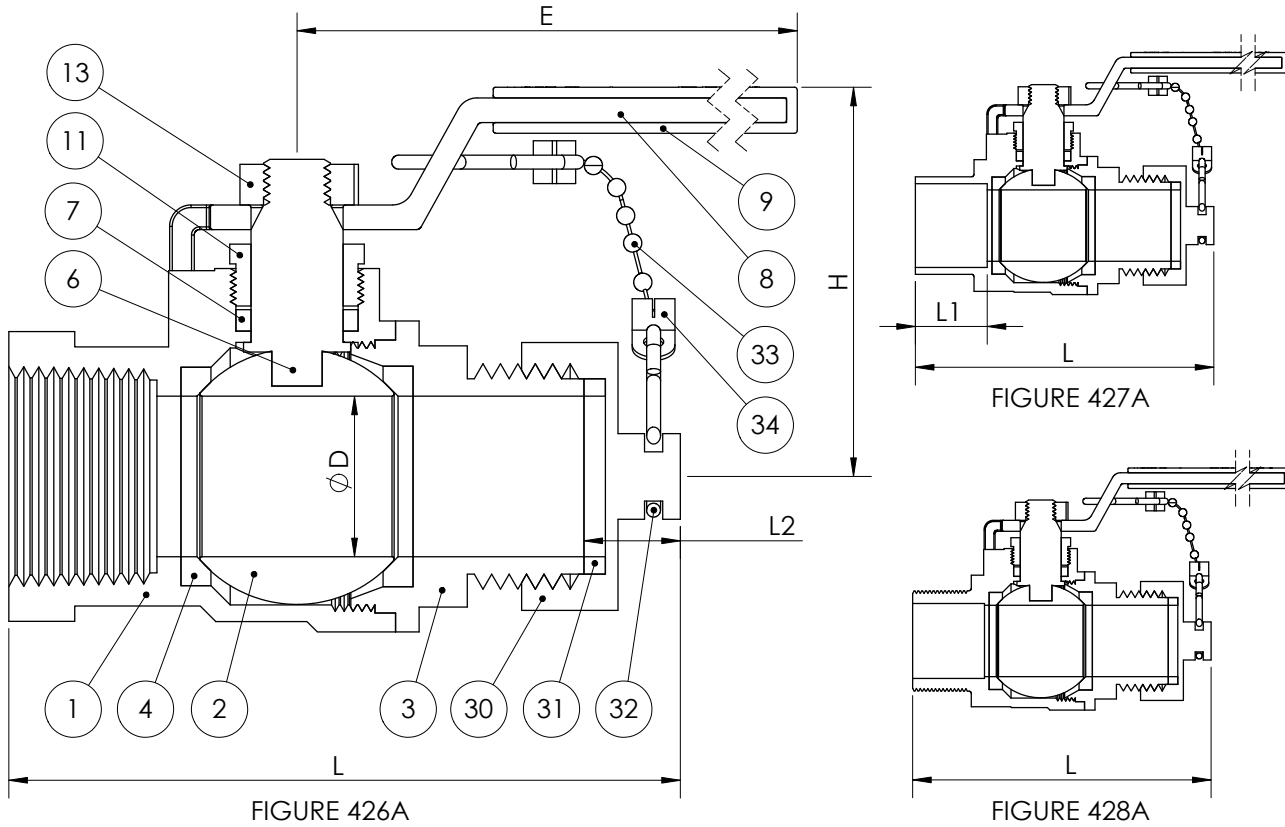
Figure 428A - MNPT



**Kit Codes (Order Separately)**

FNW 410A Kit Size	
KIT TYPE	SIZE CODE
Replacement Handle = BRYLWH	1/2" = BD
Locking Lever = LHK	3/4" = FG
Stem Extension = SE	
Tee Handle = THK	
Oval Handle = OHK	
Memory Stop = MSK	

### 2 PC FULL PORT 600 WOG 3/4" HOSE CONNECTION BALL VALVE



#### Dimensions (inches) & Weights

Figure	Size	ØD	E	H	L	L1	L2	Wt. (Lbs)
426	1/2	0.50	2.95	1.50	2.83	0.50	0.44	0.52
	3/4	0.75	3.94	1.85	3.15	0.76	0.44	0.92
427	1/2	0.50	2.95	1.50	2.72	0.50	0.44	0.52
	3/4	0.75	3.94	1.85	3.27	0.76	0.44	0.92
428	1/2	0.50	2.95	1.50	2.87	0.50	0.44	0.52
	3/4	0.75	3.94	1.85	3.27	0.76	0.44	0.92

#### Standard Materials

Ref. No.	Description	Material	Qty
1	Body	ASTM B124-C37700 Brass	1
2	Ball	ASTM B16-C36000 Brass (Nickel-Chrome Plated)	1
3	End Cap	ASTM B124-C37700 Brass	1
4	Seat	PTFE	2
6	Stem	ASTM B16-C36000 Brass	1
7	Stem Packing	PTFE	1
8	Handle	ASTM A283-D Steel (Zinc Plated)	1
9	Handle Sleeve	Vinyl	1
11	Packing Gland	ASTM B16-C36000 Brass	1
13	Handle Nut	AISI-1010 Steel (Zinc Plated)	1
30	Cap Nut	ASTM B124-C37700 Brass	1
31	Cap Nut Seal	NBR Rubber	1
32	Ring	ASTM S30400 Stainless	2
33	Chain	Brass (Plated)	1
34	Plate	ASTM S43000 Stainless	2

DOC: FNW426A-8ABV11 Ver. 8/2012

© 2012 - FNW. All rights reserved.

The FNW logo is a trademark of Ferguson Enterprises, Inc., PL Sourcing, PO Box 2778, Newport News, VA 23609

The contents of this publication are presented for information purposes only, and while effort has been made to ensure their accuracy, they are not to be construed as warranties or guarantees, expressed or implied, regarding the products or services described herein or their use or applicability. All sales are governed by our terms and conditions, which are available on request. We reserve the right to modify or improve the designs or specifications of our products at any time without notice. Always verify that you have the most recent product specifications or other documentation prior to the installation of these products.