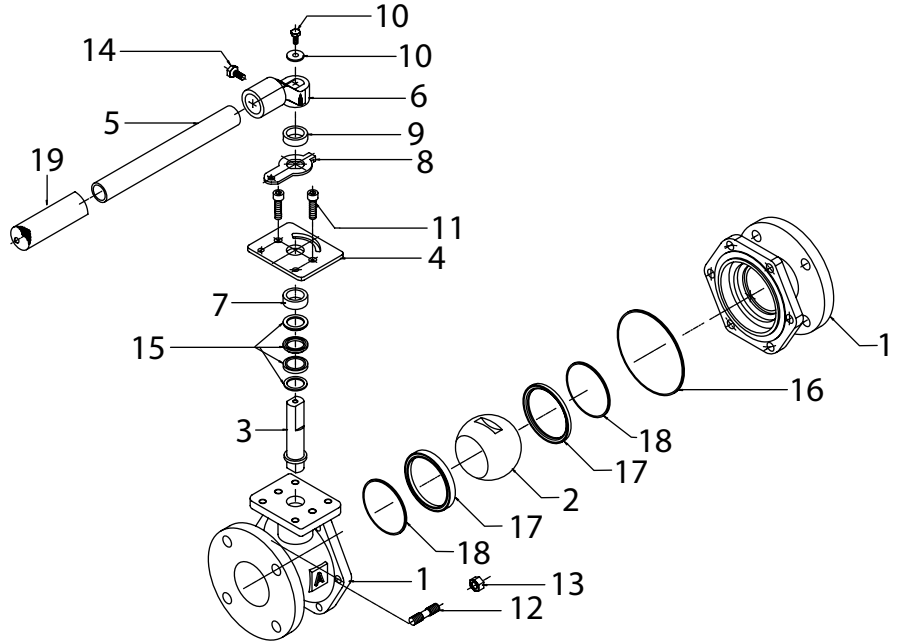


# MODEL 4000

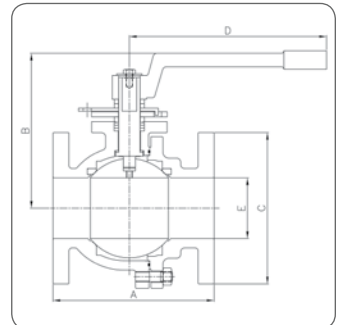
## Cast Iron Flanged End Ball Valve



Part	Material
1 Body	Cast Iron/A126 Class B
2 Ball	Cast Iron/PFA* Fused
3 Stem	Stainless Steel
4 Gland Plate	Steel
5 Handle	Steel
6 Handle Bracket	Ductile Iron
7 Packing Follower	Stainless Steel
8 Stem Indicator	Steel
9 Handle Bracket Clip	Steel
10 Stem Stud	Carbon Steel
11 Gland Stud	Carbon Steel
12 Body Stud	Carbon Steel
13 Body Nut	Carbon Steel
14 Handle Bracket Bolt	Carbon Steel
15 Packing	PTFE (Chevron)
16 Body Gasket	PTFE
17 Seat Ring	RPTFE 15% GF
18 Back Seat Ring	RPTFE 15% GF
19 Handle Grip	Vinyl Rubber Foam



DIMENSIONS:	½	¾	1	1 ½	2	2 ½	3	4	6	8	10
A Face to Face	4 ¼	4 5/8	5	6 ½	7	7 ½	8	9	10 ½	11 ½	13
B Center of Port to Top	3 ½	3 ½	4	5	5 ½	7	7 ½	8 ½	13	13	15
C Flange Diameter	3 ½	3 5/8	4 ¼	5	6	7	7 ½	9	11	13 ½	16
D Center of Valve to Handle End	9	9	9	12	12	13 ½	13 ½	15 ½	30	30	33
E Port Diameter	½	¾	1	1 ½	2	2 ½	3	4	6	6	8
Bolt Holes	4	4	4	4	4	4	4	8	8	8	12
Weight lbs.	6	8	10	16	22	36	46	75	131	185	276
CV	26	50	100	260	500	750	1245	2500	5470	4150	6700



- A126 Class B Cast Iron Body.
- PFA\* Fused Solid Ball
- Blow-out Proof Stainless Steel Stem
- Reinforced PTFE Seats
- Face to Face and Flanged Dimensions conform to ANSI Standard B16.10 which exactly match end to end dimensions of all cast iron gate valves and plug valves.
- Lockable in Full Open or Closed Positions
- Mounting Pad for Easy Actuation
- Adjustable Length/Removable Handles to fit into areas of limited space.
- Full Port through 6"

### SPECIFICATIONS:

MSS SP-72  
ANSI B16.10  
FED. SPEC. WW-V-35  
AWWA C507-99 Proof of Design Test

### RATING:

125 psi WSP  
200 psi WOG  
353° F

This patented Cast Iron Ball Valve has been engineered to replace any IBBM Gate Valve, All Iron Gate Valve, or Plug Valve.

*\*PFA is an ingredient commonly branded as Teflon.*

### SAMPLE SPECIFICATION:

Ball valves shall be of the floating-ball design capable of providing bi-directional, tight shutoff in accordance with MSS SP-72. The valves shall be rated at 125# WSP/200# WOG. Bodies shall be of cast iron per ASTM A126 Class B, With ANSI Class 125 flat-face flanges. The interior and exterior of the body shall be epoxy-coated. The ball shall be PFA infused cast iron, with a stainless steel blowout-proof stem. The seats and body seals shall be PTFE. The stem seal shall be PTFE, externally adjustable chevron type. Valves shall be equipped with locking handles as standard. If service conditions require, valves may be equipped with 2" square operating nuts, manual gear operators, or pneumatic, electric, or hydraulic actuators. Valves shall be the Series 4000 as manufactured by American Valve, Inc. or as approved by the engineer.