

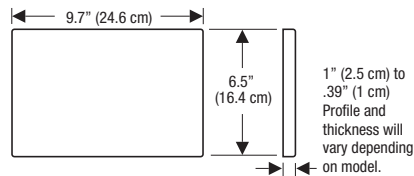
Dual-Flush Actuators for Geberit Sigma Concealed Tanks, 2x6 Installations

Product Specifications

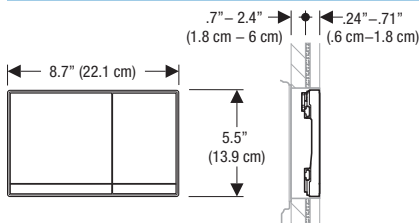
Actuators for concealed tank and carrier system. Actuator flush plates and push buttons shall be glass, zinc die-cast, molded plastic or fabricated stainless steel and plated to guard against scratches. All components shall be compliant with applicable codes and product standards.

Dimensions

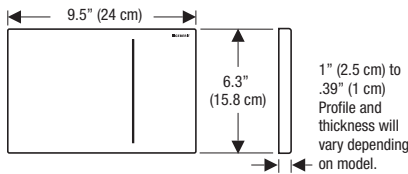
Dual-Flush Actuator Plates and Cover Plates (Fig. 1)



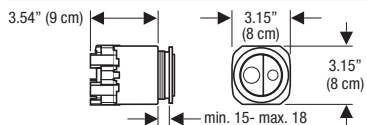
Sigma60 Dual-Flush Actuator Plates (Fig. 2)



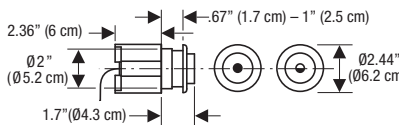
Sigma70 Dual-Flush Actuator Plates (Fig. 3)



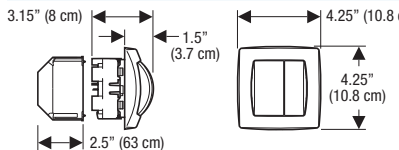
Round Dual-Flush Push Buttons (Fig. 4)



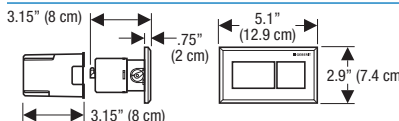
Round Dual-Flush Push Buttons (Fig. 5)



Square Dual-Flush Push Buttons (Fig. 6)



Rectangular Dual-Flush Push Buttons (Fig. 7)



Finishes

Dual-Flush Actuators

Style	Material	Finish	Model No.
	Plastic	Alpine White	115.777.11.1
		Polished Chrome	115.777.21.1
		Matte Chrome	115.777.46.1
		Pergamon	115.777.EP.1
		Satinex	115.777.GM.1
	Plastic	Alpine White	115.770.11.5
		Polished Chrome	115.770.21.5
		Matte Chrome	115.770.46.5
		Pergamon	115.770.EP.5
		Star White	115.770.FR.5
		Satinex	115.770.GM.5
	Metal	Br Ni-Polish-Br Ni*	115.778.ID.1
		Br SS-Polish-Br SS*	115.778.SN.1
		Br Ni-Polish-Br Ni*	115.781.ID.1
		Vandal Resistant	
		Br SS-Polish-Br SS*	115.781.SN.1
	Plastic	Polish-Matte-Polish*	115.778.KH.1
		White-Polish-White*	115.778.KJ.1
		White-Gold-White*	115.778.KK.1
		White-Matte-Matte*	115.778.KL.1
		Black-Polish-Black*	115.778.KM.1
	Die Cast	Customer supplied inlay	115.788.00.5
		Alpine White	115.788.11.5
		Black	115.788.DW.5
		Brushed Chrome	115.788.GH.5
		White Pattern Glass	115.788.SC.5
		Smoke Glass	115.788.SD.5
		Green Satin Glass	115.788.SE.5
		Umber Glass	115.788.SQ.5
		Complete Rough-in and Trim Set	115.792.GH.1
		Rough-in Set***	115.795.21.1
	Die Cast	Brushed Chrome	115.796.GH.1
		Trim Set***	
	Glass	Brushed SS	115.620.FW.1
		White Glass	115.620.SI.1
		Black Glass	115.620.SJ.1
		Umber Glass	115.620.SQ.1

Hands Free Actuators

Sigma80††	Glass	Black (AC Power)	116.090.SG.1
		Mirror (AC Power)	116.090.SM.1

Cover Plates for use with Push Buttons

	Die Cast	Alpine White	115.765.11.1
		Matte Chrome	115.765.46.1

	Metal	Brushed SS	115.798.00.1
--	-------	------------	--------------

Dual-Flush Push Buttons†

Round	Plastic	Polished Chrome	115.999.21.1
-------	---------	-----------------	--------------

Round	Plastic	Polished Chrome	115.992.21.1
		Matte Chrome	115.992.46.1

Square	Plastic	Alpine White	115.942.11.1
		Polish-Matte**	115.942.KA.1

Rectangle	Plastic	Polish-Matte**	115.932.KA.1
	Die Cast	Brushed Chrome	115.932.GH.1

Warranty

One-year warranty on actuator flush plates.

Features

- Designed to maintain appearance push after push
- Moving parts are accessible behind actuator flush plate
- Made of glass, molded plastic, zinc die cast or stainless steel and plated
- Available in 26 unique combinations of finish/color
- Incorporates water saving possibilities with dual-flush buttons of 1.6 GPF (6 LPF) or 0.8 GPF (3 LPF) giving an effective flush volume of 1.1 GPF (4 LPF)

Actuator flush plates comply with the American Disabilities Act (ADA) when installed per the requirements of the latest ADA Standards for Accessible Design.†

* Finishes follow this pattern = Plate-Ring-Button

Polish = Polished Chrome

Matte = Matte Chrome

Br SS = Brushed Stainless Steel

Br Ni = Brushed Nickel

** Finishes follow this pattern = Frame-Button

Polish = Polished Chrome

Matte = Matte Chrome

*** Rough-in Set and Trim Set can be ordered separately. Both sets needed for installation.

† Push Buttons do not comply with ADA Standards for Accessible Design

†† Requires 230 V, 50 Hz or transformer to 120 V, 60 Hz. Suggested accessory 115.861.00.1.

‡ Note: For tiled walls only!



ARCHITECT/ENGINEER APPROVAL

Job Name _____

Date _____ Quantity _____

Model Specified _____

Variations Specified _____

Customer/Wholesaler _____

Contractor _____

Architect _____