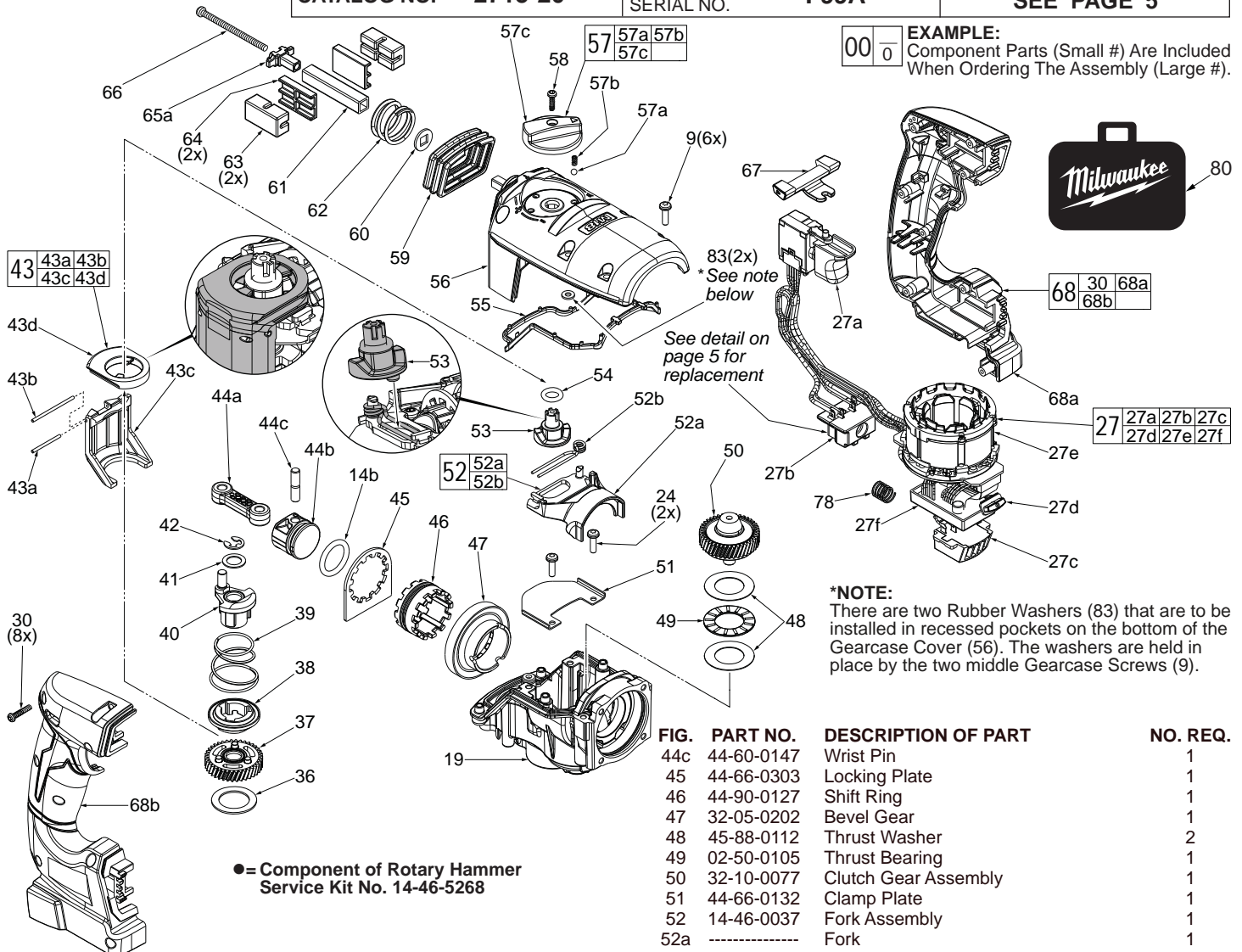




## SERVICE PARTS LIST

BULLETIN NO.  
54-24-2700

SPECIFY CATALOG NO. AND SERIAL NO. WHEN ORDERING PARTS		REVISED BULLETIN	DATE
<b>M18 FUEL™ 1-1/8" (3kg) Rotary Hammer</b>			Sept. 2014
CATALOG NO.	2715-20	STARTING SERIAL NO.	F99A
		WIRING INSTRUCTION SEE PAGE 5	



● = Component of Rotary Hammer  
Service Kit No. 14-46-5268

FIG.	PART NO.	DESCRIPTION OF PART	NO. REQ.
9	06-75-2407	M4 x 17mm Pan Hd. Taptite T-20 Screw	6
14b	34-40-0068	O-Ring (1 on Piston #42b, 1 on Ram #14a)	2
19	14-30-0037	Gearbox Assembly	1
24	05-78-0105	M4 x 10mm Pan Hd. Taptite Screw (2 of 4)	2
27	14-20-2715	Electronics Assembly	1
27a	23-66-0027	On-Off Switch	1
27b	22-56-0047	Battery Connector Block	1
27c	-----	Connector Assembly	1
27d	-----	LED Assembly	1
27e	-----	Stator Assembly	1
27f	-----	PCB Assembly	1
30	06-82-2025	M3.5 x 16mm Pan Hd. Plast. T-10 (8 of 23)	23
36	45-88-0106	Washer	1
37	32-60-0112	Crank Gear Assembly with Needle Bearing	1
38	44-90-0152	Crank Shift Ring	1
39	40-50-0107	Crank Spring	1
40	14-09-0110	Crank Assembly	1
41	44-66-0122	Crank Shim	1
42	42-70-5268 ●	Retaining E-Ring	1
43	14-46-0117	Chisel Shifter Assembly	1
43a	-----	M2 x 27mm Dowel Pin	1
43b	-----	M2 x 40mm Dowel Pin	1
43c	-----	Chisel Bracket	1
43d	-----	Chisel Shift Driver	1
44a	44-94-0022	Connecting Rod	1
44b	44-62-0302	Piston	1

FIG.	PART NO.	DESCRIPTION OF PART	NO. REQ.
44c	44-60-0147	Wrist Pin	1
45	44-66-0303	Locking Plate	1
46	44-90-0127	Shift Ring	1
47	32-05-0202	Bevel Gear	1
48	45-88-0112	Thrust Washer	2
49	02-50-0105	Thrust Bearing	1
50	32-10-0077	Clutch Gear Assembly	1
51	44-66-0132	Clamp Plate	1
52	14-46-0037	Fork Assembly	1
52a	-----	Fork	1
52b	-----	Fork Spring	1
53	42-90-0022	Shifting Coupler	1
54	34-40-0093 ●	O-Ring	1
55	42-92-0052 ●	Gearcase Gasket	1
56	28-20-0022	Gearcase Cover	1
57	44-10-0057	Selector Knob Assembly	1
57a	-----	Selector Ball	1
57b	-----	Selector Spring	1
57c	-----	Selector Knob	1
58	06-82-2025	M3.5 x 16mm Pan Hd. Plastite T-10 Screw	1
59	22-90-0132	Top Bellows	1
60	45-88-0153	Vibration Washer (1 each for top & bottom AVS)	2
61	44-20-0141	Top AVS Square Guide Pipe	1
62	40-50-0211	Top AVS Spring	1
63	42-38-0077	Vibration Bumper (2 each for top & bottom AVS)	4
64	42-38-0137	Bumper Holder (2 each for top & bottom AVS)	4
65a	44-66-0132	Retaining Plate	1
66	05-78-0012	M4 x 52mm Scr. (1 each for top & bottom AVS)	2
67	42-42-2715	Forward/Reverse Button	1
68	31-44-2725	Handle Assembly	1
68a	-----	Left Handle Halve	1
68b	-----	Right Handle Halve	1
78	40-50-1090	Compression Spring	1
80	42-55-2715	Blow Molded Carrying Case	1
83	45-88-0014 ●	Rubber Washer	2

●= Component of Rotary Hammer  
Service Kit No. 14-46-5268

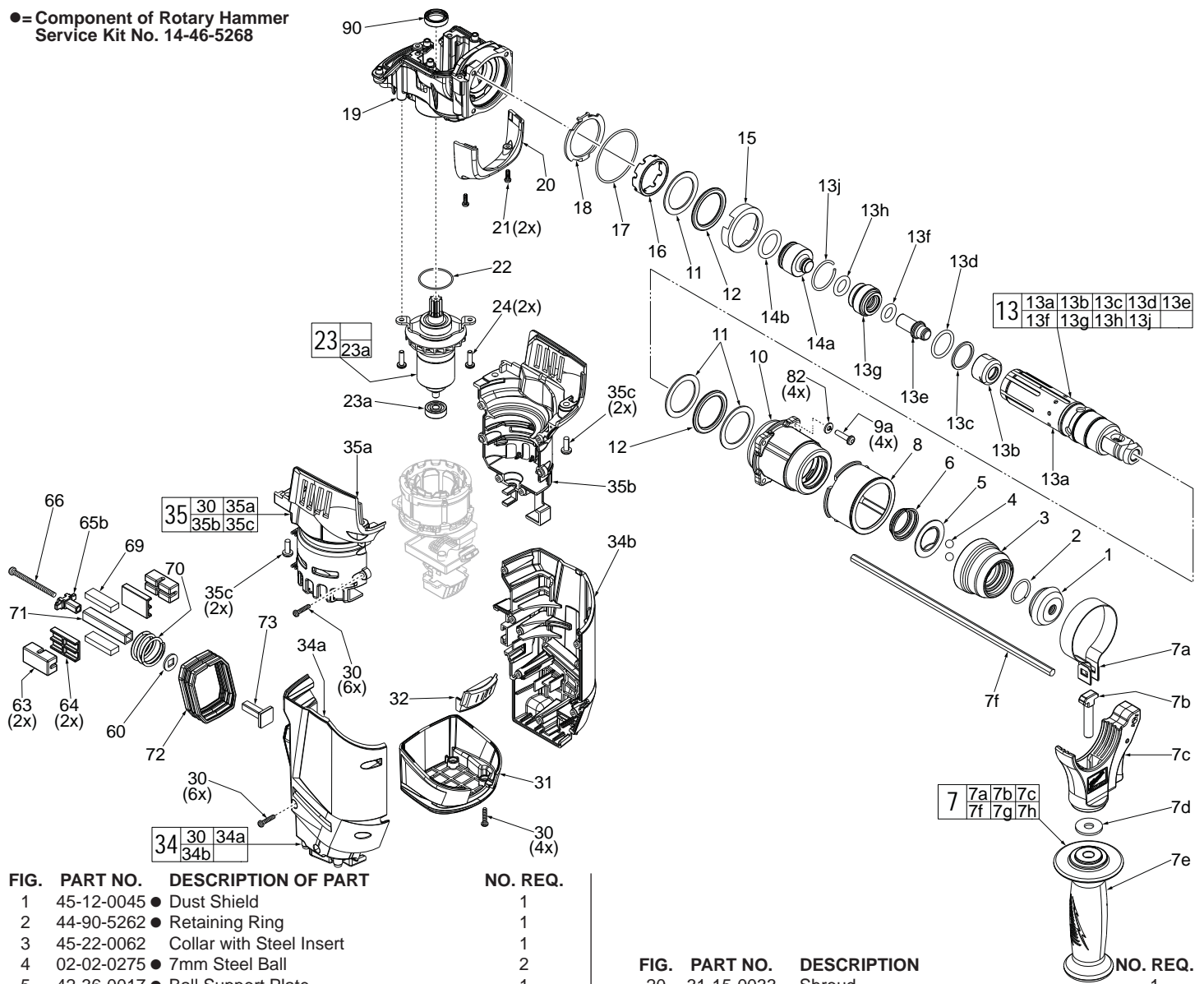
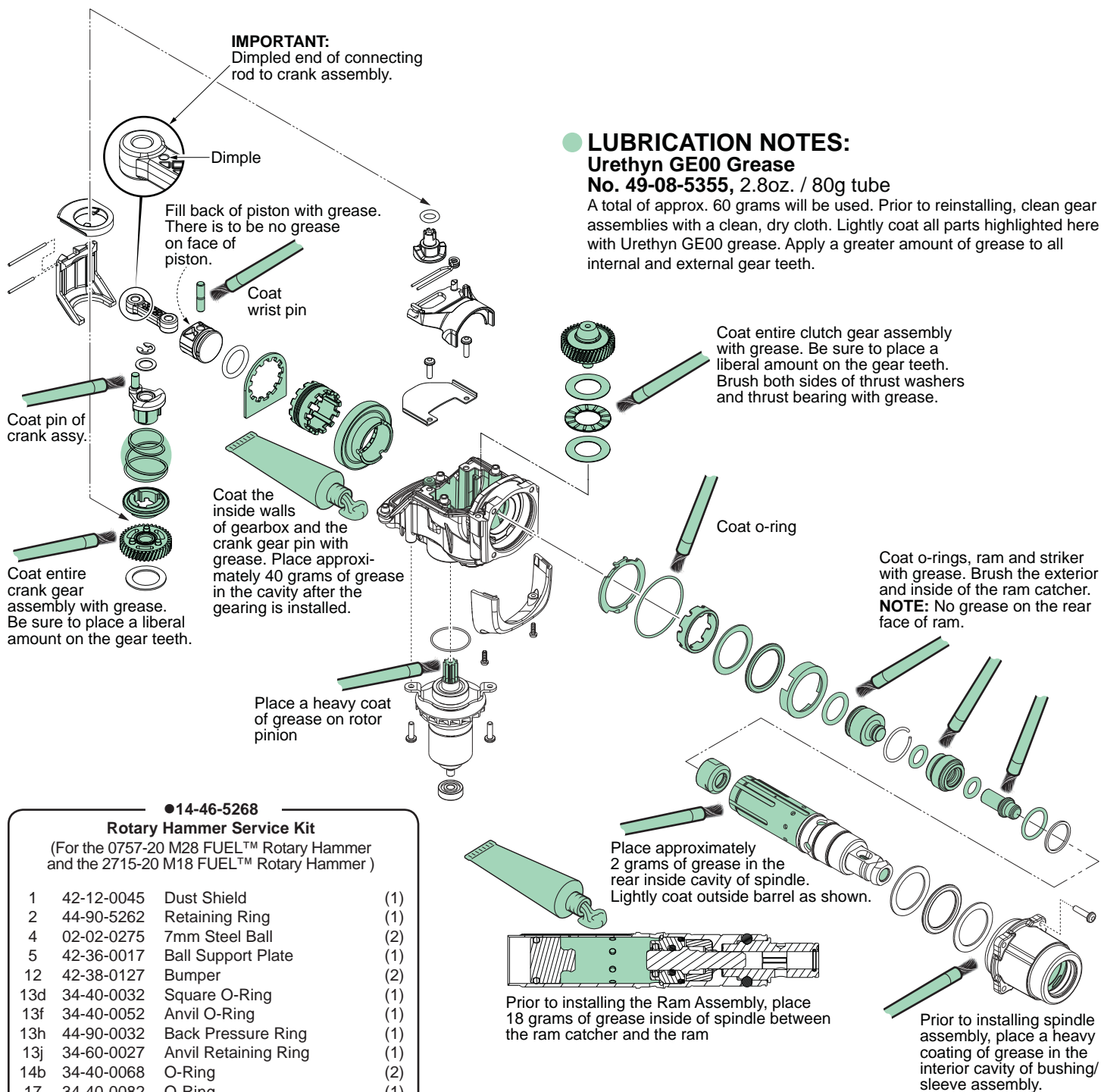


FIG. PART NO.	DESCRIPTION OF PART	NO. REQ.
1	45-12-0045 ● Dust Shield	1
2	44-90-5262 ● Retaining Ring	1
3	45-22-0062 Collar with Steel Insert	1
4	02-02-0275 ● 7mm Steel Ball	2
5	42-36-0017 ● Ball Support Plate	1
6	40-50-0082 Conical Spring	1
7	14-34-0015 Side Handle Assembly	1
7a	44-66-0072 Clamp Collar	1
7b	05-81-5376 M8 x 53mm Screw	1
7c	----- Side Handle Carrier Assembly	1
7d	45-88-5377 Washer	1
7e	31-05-0015 Side Handle	1
7f	44-94-5381 Depth Rod	1
8	45-22-0045 Side Handle Sleeve	1
9a	05-78-5316 M4 x 14mm Pan Hd. Taptite T-20 Screw	4
10	42-40-0127 Bushing Sleeve Assembly with Seals	1
11	45-88-0157 Washer	3
12	45-38-0127 ● Bumper	2
13	14-46-0197 Spindle Assembly	1
13a	38-50-0052 Spindle	1
13b	43-06-0060 Brake Ring	1
13c	44-66-0203 Anvil Ring	1
13d	34-40-0032 ● Square O-Ring	1
13e	42-06-0027 Anvil/Striker	1
13f	34-40-0052 ● Anvil O-Ring	1
13g	42-06-0067 Ram Catcher	1
13h	44-90-0032 ● Back Pressure Ring	1
13j	34-60-0027 ● Anvil Retaining Ring	1
14a	45-56-0065 Ram	1
14b	34-40-0068 ● O-Ring (1 on Ram #14a, 1 on Piston #42b)	2
15	45-88-0042 Bumper/Washer Holder	1
16	42-76-0037 Spindle Collar	1
17	34-40-0082 ● O-Ring	1
18	44-60-0119 Retaining Plate	1
19	14-30-0037 Gearbox Assembly	1

FIG. PART NO.	DESCRIPTION	NO. REQ.
20	31-15-0033 Shroud	1
21	05-86-1000 M3 x 9.5mm Pan Hd. Taptite T-10 Screw	2
22	34-40-5320 ● O-Ring	1
23	16-07-2715 Rotor Assembly	1
23a	02-04-5382 Ball Bearing	1
24	05-78-0105 M4 x 10mm Pan Hd. Taptite Screw	2
30	06-82-2025 M3.5 x 16mm Pan Hd. Plast. T-10 (15 of 23)	23
31	23-44-2715 Bottom Cap	1
32	42-28-0077 Bottom Cap/Connector Rubber	1
34	31-44-2715 Housing Assembly	1
34a	----- Housing Cover (Right Housing)	1
34b	----- Housing Support (Left Housing)	1
35	31-50-2715 Motor Housing Assembly	1
35a	----- Motor Housing Cover (Right Motor Housing)	1
35b	----- Motor Housing Support (Left Motor Housing)	1
35c	05-74-0990 M5 x 15mm Taptite T-25 Screw	4
60	45-88-0153 Vibration Washer (1 of 2)	2
63	42-38-0077 Vibration Bumper (2 of 4)	4
64	42-38-0137 Bumper Holder (2 of 4)	4
65b	44-66-0131 Retaining Plate	1
66	05-78-0012 M4 x 52mm Scr. (1 each for top & bottom AVS)	2
69	44-52-0052 Foam Block	2
70	40-50-0138 Bottom AVS Spring	1
71	44-68-0155 Bottom AVS Square Guide Pipe	1
72	22-90-0153 Bottom Bellows	1
73	42-36-2715 T-Bracket	1
79	12-20-0043 Service Nameplate (Not Shown)	1
82	05-90-0225 Lock Washer	4
90	45-06-0148 Motor Seal	1



#### ●14-46-5268

#### Rotary Hammer Service Kit

(For the 0757-20 M28 FUEL™ Rotary Hammer and the 2715-20 M18 FUEL™ Rotary Hammer)

1	42-12-0045	Dust Shield	(1)
2	44-90-5262	Retaining Ring	(1)
4	02-02-0275	7mm Steel Ball	(2)
5	42-36-0017	Ball Support Plate	(1)
12	42-38-0127	Bumper	(2)
13d	34-40-0032	Square O-Ring	(1)
13f	34-40-0052	Anvil O-Ring	(1)
13h	44-90-0032	Back Pressure Ring	(1)
13j	34-60-0027	Anvil Retaining Ring	(1)
14b	34-40-0068	O-Ring	(2)
17	34-40-0082	O-Ring	(1)
22	34-40-5320	O-Ring	(1)
42	42-70-5268	Retaining E-Ring	(1)
54	34-40-0093	O-Ring	(1)
55	42-92-0052	Gearcase Gasket	(1)
83	45-88-0014	Rubber Washer	(2)
	49-08-5355	Urethyn GE00 Grease	
		60 grams required- (80 gram, 2.8oz tube)	(1)

Disregard and discard Carbon Brushes for models 0757-20 and 2715-20.

22-18-5268	120V Carbon Brush (Set of 2)	(1)
	For model 5268-21.	
22-18-5268	120V Carbon Brush (Set of 2)	(1)
	For model 5268-50.	

**DISCARD**

**NOTE:**  
It is recommended to order Motor Seal #90 (45-06-0148) at the same time that Rotary Hammer Service Kit No. 14-46-5268 is installed.

#### ● LUBRICATION NOTES:

##### Urethyn GE00 Grease

No. 49-08-5355, 2.8oz. / 80g tube

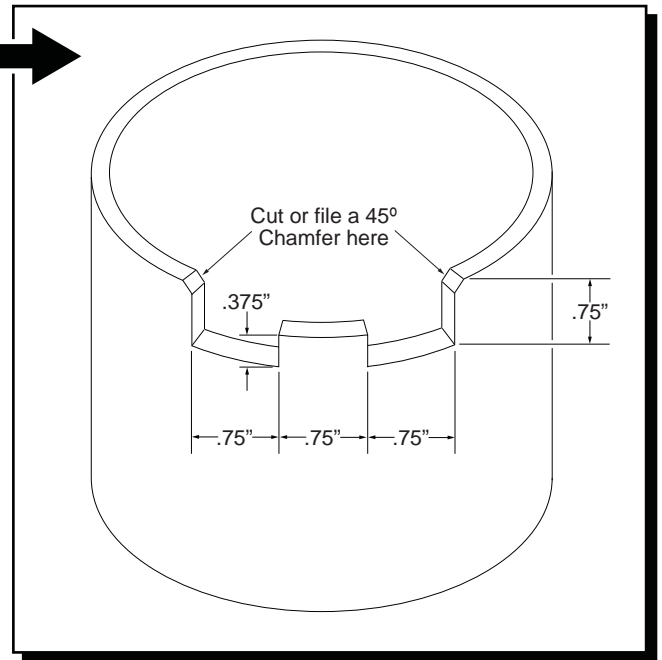
A total of approx. 60 grams will be used. Prior to reinstalling, clean gear assemblies with a clean, dry cloth. Lightly coat all parts highlighted here with Urethyn GE00 grease. Apply a greater amount of grease to all internal and external gear teeth.

#### SCREW TORQUE SPECIFICATIONS

FIG.	PART NO.	WHERE USED	SEAT TORQUE	
			(KG/CM)	(IN/LBS)
9	06-75-2407	Gearcase Cover (4) Rear and Middle	30	26
9	06-75-2407	Gearcase Cover (2) Front	30	26
9a	05-78-5316	Bushing Sleeve Assembly	26	22.5
21	05-86-1000	Shroud	12	10.5
24	05-78-0105	Clamp Plate	26	22.5
24	05-78-0105	Rotor Bearing Plate	33	28.5
30	06-82-2025	Bottom Cap	12	10.5
30	06-82-2025	Housing Cover	12	10.5
30	06-82-2025	Motor Housing Cover	12	10.5
30	06-82-2025	Right Handle Halve	12	10.5
35c	05-74-0990	Motor Housing Assembly	43	37.5
58	06-82-2025	Selector Knob	8.5	7.5
66	05-78-0012	Retaining Plate (Top and Bottom)	20	17.5



**NOTE:** As an aid to working on the gearcase and spindle assemblies, a bench top fixture can be made from a 3.25" piece of 4" PVC pipe. The contour of the pipe can be cut according to dimensions in the illustration.



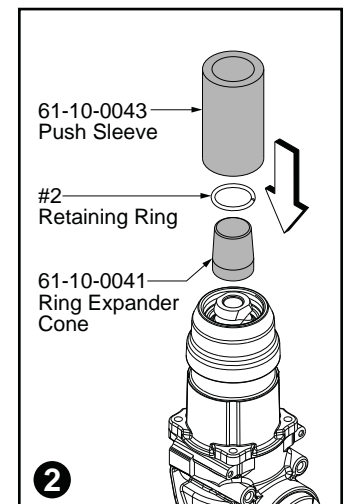
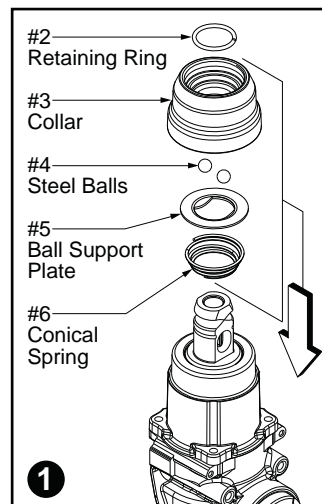
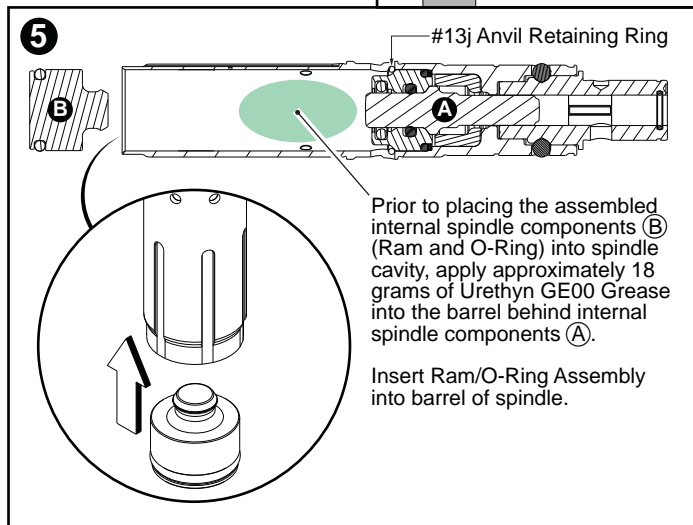
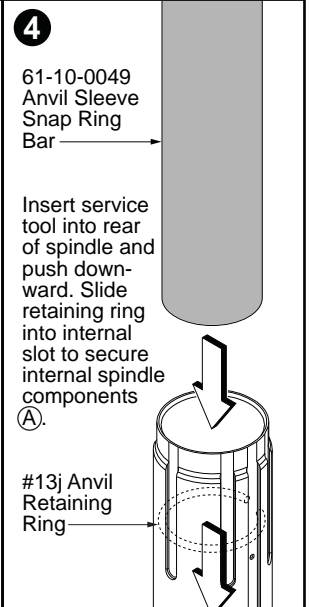
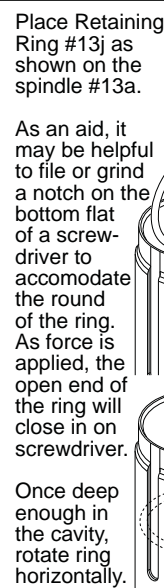
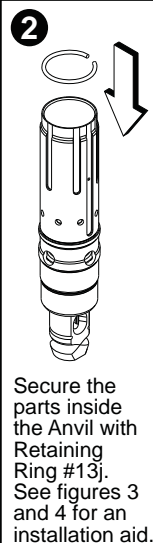
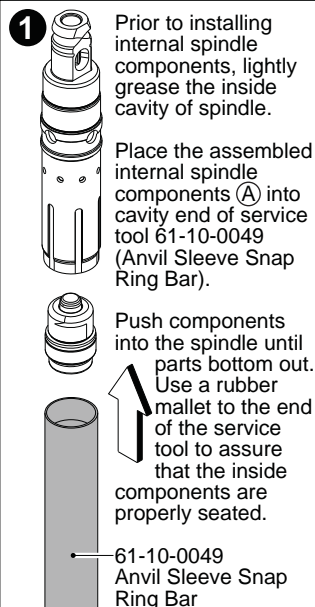
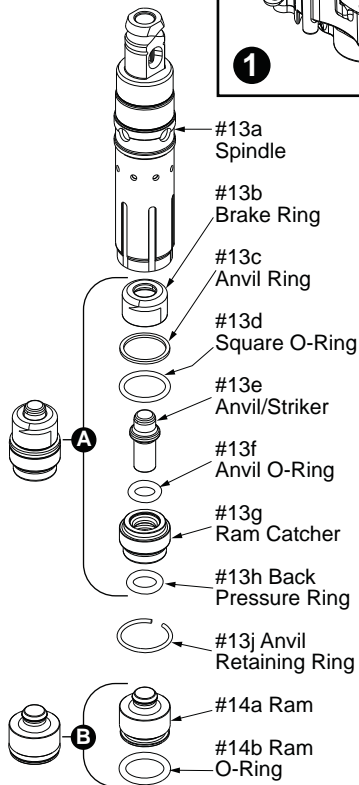
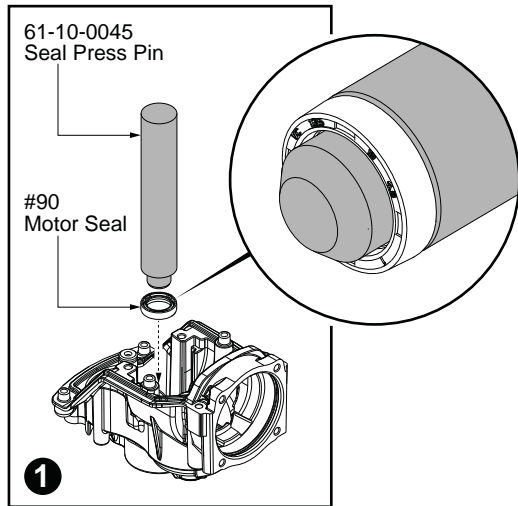
# **SERVICE TOOLS:**

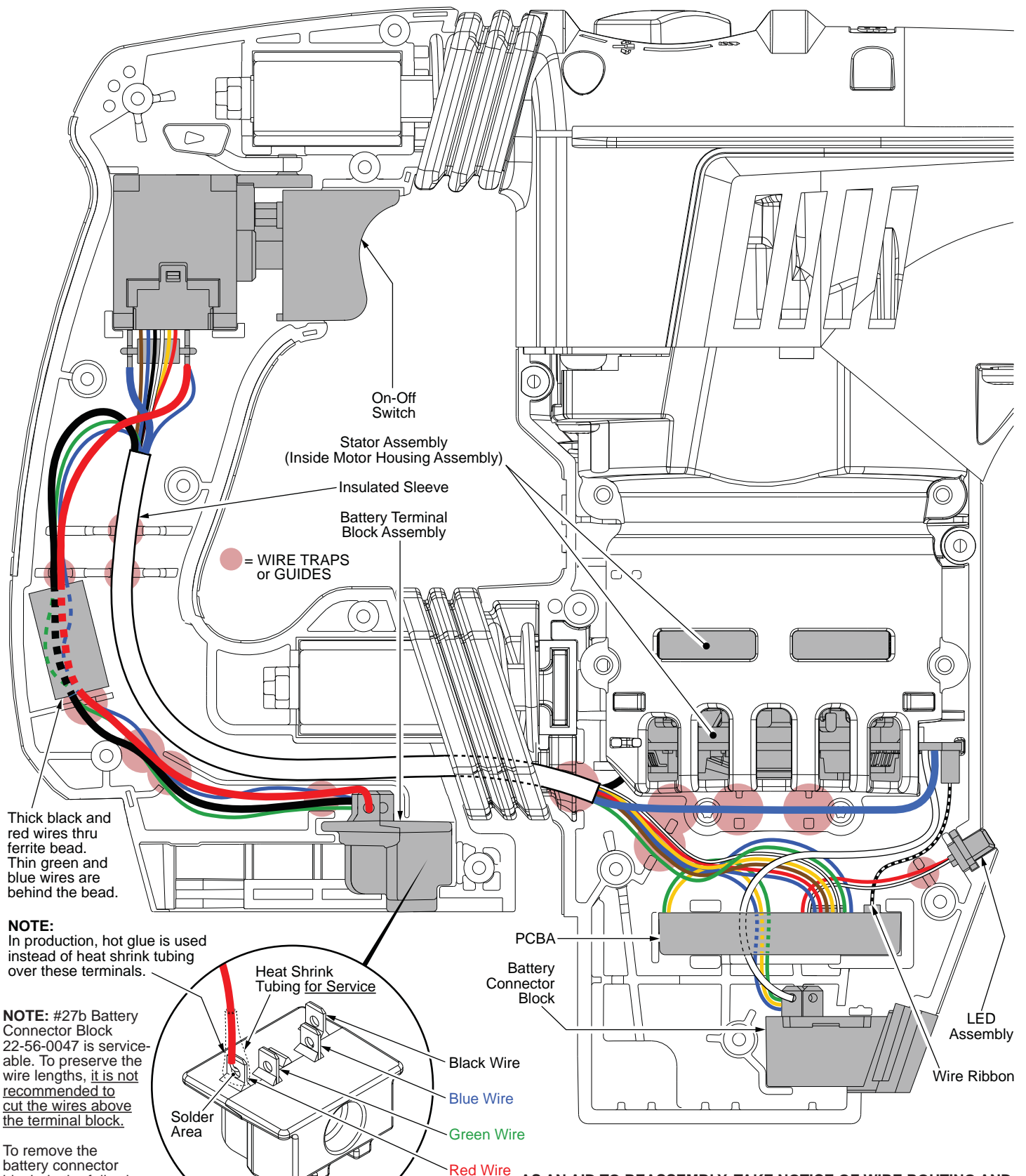
**61-10-0041**  
Ring Expander  
Cone

**61-10-0043**  
Push Sleeve

**61-10-0045**  
Seal Press Pin

**61-10-0049**  
Anvil Sleeve  
Snap Ring Bar





Thick black and red wires thru ferrite bead. Thin green and blue wires are behind the bead.

**NOTE:**

In production, hot glue is used instead of heat shrink tubing over these terminals.

**NOTE:** #27b Battery Connector Block 22-56-0047 is serviceable. To preserve the wire lengths, it is not recommended to cut the wires above the terminal block.

To remove the battery connector block do the following:

1. The hot glue or heat shrink tubing must be carefully removed from each wire by using a knife or razor blade.
2. Carefully heat the solder at the terminal location to remove each wire.
3. Place a new piece of heat shrink tubing over each wire prior to resoldering onto the new Battery Connector Block.
4. **Be sure the wires are place back at the correct terminal locations.** Solder each wire back into place. Slide heat shrink tubing over the solder/terminal area and heat to secure. (Note: A small strip of electrical tape can be used in place of heat shrink tubing).

**AS AN AID TO REASSEMBLY, TAKE NOTICE OF WIRE ROUTING AND POSITION IN WIRE GUIDES AND TRAPS WHILE DISMANTLING TOOL.**

**BE SURE THAT ALL COMPONENTS OF THE ELECTRONICS KIT ARE SEATED FIRMLY AND SQUARELY IN THE HOUSING RECESSES.**

**AVOID PINCHED WIRES, BE SURE THAT ALL WIRES AND SLEEVES ARE PRESSED COMPLETELY DOWN IN WIRE GUIDES AND TRAPS.**

**PRIOR TO INSTALLING THE HOUSING COVER ONTO THE HOUSING SUPPORT, BE SURE THAT THERE ARE NO INTERFERENCES.**