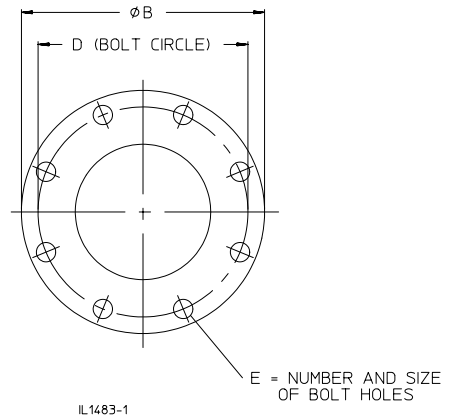
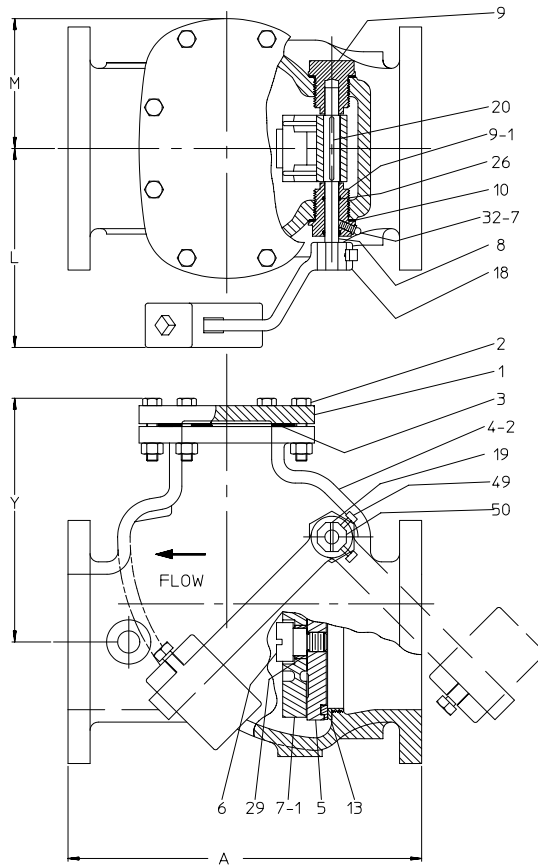




## SERIES 50-SC LEVER AND WEIGHT PARTS LIST



Ref No.	Description	Material	Qty
1	Bonnet	Gray Iron	1
2	Bonnet Bolt & Nut	Plated Steel	Varies
3	Bonnet Gasket	Composition Rubber	1
4-2	Flange Ends Case	Gray Iron	1
5	Disc	See Note 6	1
6	Disc Stud	Bronze	1
7-1	Clapper Arm for Lever	Ductile Iron	1
8-1	Clapper Arm Shaft Assembly	Stainless Steel (See Note 5)	1
9	Retaining Plug	Bronze	1
9-1	Retaining Plug for Lever	Bronze	1
10	Retaining Plug Gasket	Composition Rubber	2
13	Seat Ring	Bronze	1
18	Lever for Weight	Ductile Iron	1
19	Lever Pin	Steel	1
20	Shaft Key	Stainless Steel	1
25	Weight for Lever	Gray Iron	1
26	O-ring	Carboxylated Nitrile	2
27	Weight Set Screw	Steel	1
29	Disc Stud Bushing	Bronze	1
32-7	Grease Fitting	Steel	1
49	Lever Set Screw	Steel	2
50	Shaft Nut	Ductile Iron	1

### NOTES:

- Construction, materials and testing comply with ANSI/AWWA C508.
- End flanges conform to ANSI B16.1 Class 125 or ANSI/AWWA C110/A21.10.
- Valves have manufacturer's name, pressure class and year of manufacture cast on side of case.
- All gray iron is ASTM A126 Class B.
- Clapper Arm shaft is stainless steel A582 type 416. Assembly includes lever, pin, key, set screw and octagon nut.
- Disc on 3" are bronze ASTM B763 alloy 954. 4" and above are gray iron with bronze face (ASTM B763 alloy 8440) disc has lug on O.D. to prevent rotation.
- Lever is furnished on side and position shown unless otherwise specified for lever and weight. Lever shown by dot and dash lines is the position furnished when valve is to be installed in a vertical line with upward flow for lever and weight.