

BRACKETING SYSTEM

525 series

Strong Arm™ with Lock Block™

SPECIFICATION

Sioux Chief 525 series Strong Arm with Lock Block pre-assembled bracketing system shall be used where necessary for securing CTS water supply stub outs when penetrating a wall. Bracket shall be corrosion resistant with twisted ends to mount to the surface either a wood or metal stud wall. System shall include approved hardware for fastening brackets to stud wall. System shall include slideable, plastic block device to position and secure CTS stub out at any desired location. Each block shall include two screws for tightening. When screws on blocks are tightened, compression of blocks prevents lateral movement on brackets and simultaneously compresses on tube to prevent stub out movement. Lock Blocks shall be compatible with copper, CPVC, or PEX tube. Optional flame-rated blocks comply to UL94-VO standards.

MATERIALS

brackets: 16 gauge galvanized steel
 standard (black) blocks: ABS
 flame-rated (red) blocks: hard PVC (meets UL94-VO requirements)
 screw: #6 × 1" coarse thread, zinc-plated

SAFE WORKING LOAD*

25 lbs. at 140°F
 *safe working load = ½ failure

INSTALLATION

Determine stub out height. Secure top bracket to stud. Slide blocks across bracket to desired stub out location. Install stub out or stub out elbow in block. Tighten each screw on each block to secure stub out and prevent lateral movement on brackets. Bend ends of bottom bracket down as close as possible to block. Secure each end to stud. Optional installations include keeping brackets parallel, or bending brackets on only one side in opposite directions from each other.

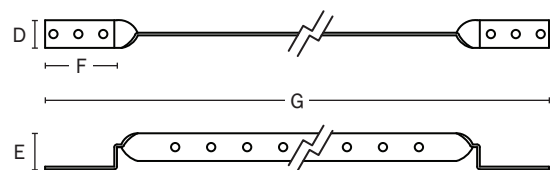
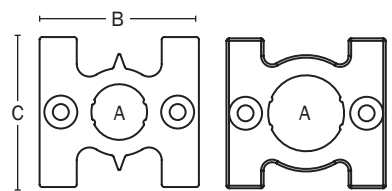
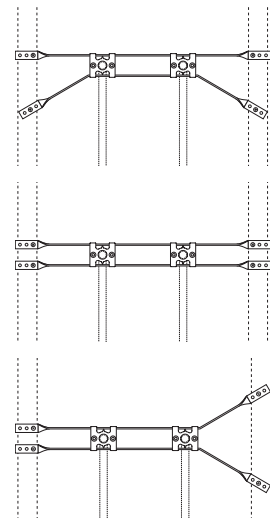
DIMENSIONS

Lock Block	for ½" CTS	for ¾" CTS	for 1" CTS
A: Diameter	5/8"	7/8"	1 1/8"
B: Width	1 7/8"	1 7/8"	2 1/4"
C: Height	1 3/4"	1 3/4"	1 3/4"
Strong Arm	16" stud bay	24" stud bay	
D: Depth	5/8"	5/8"	
E: Offset	1/2"	1/2"	
F: Mounting tab	1 1/2"	1 1/2"	
G: Overall length	17 1/4"	25 1/4"	

Item # Submitted	_____
Job Name	_____
Location	_____
Engineer	_____
Contractor	_____
PO#	_____ TAG _____



525-1612



Create Item Number

525- A B C D

e.g. 525-1623 = 16" stud bay Strong Arm bracket with two ¾" Lock Blocks.

- | | | |
|---|--|--|
| <p>A LENGTH</p> <p><input type="checkbox"/> 16 16" stud bay</p> <p><input type="checkbox"/> 24 24" stud bay</p> <p>B NUMBER OF BLOCKS</p> <p><input type="checkbox"/> 1 one block</p> <p><input type="checkbox"/> 2 two blocks</p> <p>C SIZE OF BLOCKS</p> <p><input type="checkbox"/> 2 for ½" supply</p> <p><input type="checkbox"/> 3 for ¾" supply</p> <p><input type="checkbox"/> 4 for 1" supply</p> | <p>D FLAME-RATED BLOCKS</p> <p><input type="checkbox"/> _ none</p> <p><input type="checkbox"/> R UL-94 VO flame rated</p> <p>INDIVIDUAL COMPONENTS</p> <p><input type="checkbox"/> 525-16T Twisted Strong Arm bracket for 16" bay</p> <p><input type="checkbox"/> 525-24T Twisted Strong Arm bracket for 24" bay</p> <p><input type="checkbox"/> 525-B2 Lock Block for ½" supply</p> <p><input type="checkbox"/> 525-B3 Lock Block for ¾" supply</p> <p><input type="checkbox"/> 525-B4 Lock Block for 1" supply</p> | <p>INDIVIDUAL COMPONENTS (cont.)</p> <p><input type="checkbox"/> 525-B2R Flame-rated Lock Block for ½" supply</p> <p><input type="checkbox"/> 525-B3R Flame-rated Lock Block for ¾" supply</p> <p><input type="checkbox"/> 525-B4R Flame-rated Lock Block for 1" supply</p> |
|---|--|--|