



Total Piping Solutions, Inc.

1760 Haskell Road
Olean, New York 14760

TEL: 716-372-0160

FAX: 716-372-1767

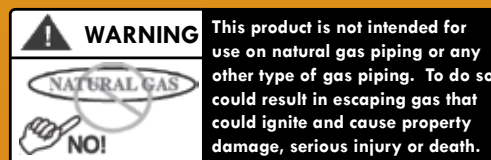
E-Mail: sales@tps.us

VISIT OUR WEBSITE: <http://tps.us>

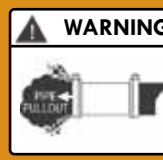
FORM EZ-MAX/TAPS 5/12



Patented and Trademarked by *Krausz Industries, Ltd.*



This product is not intended for use on natural gas piping or any other type of gas piping. To do so could result in escaping gas that could ignite and cause property damage, serious injury or death.



This is a non-restraining product. If pipe pullout can occur, proper anchoring of the pipe joint is required. Failure to anchor the pipe could result in the escape of line content, and may cause property damage, serious injury or death.



EZ-MAX[®] Plus

Repair Clamp

EZ-MAX[®] Plus with Taps



Total Piping Solutions, Inc.

EZ-MAX[®] PLUS Repair Clamp

EZ-MAX[®] PLUS 4000 Series Pipe Repair Clamps

The EZ-MAX PLUS 4000 repair clamp is suited to a wide range of pipe repair conditions, and each size will replace between three and four standard range clamp designs in your inventory.

Each repair clamp accommodates a range of up to 8/10ths of an inch. The EZ-MAX repair clamp is available in widths ranging from 6", 9", 12", 15" and 24" wide.

The EZ-MAX PLUS 4000 offers an efficient range adjustable band, a deep waffled mat-type gasket with pressure-assisted sealing rings and NSF61 Registered EPDM compounded gasket. The gasket is equipped with a spanner plate that is mechanically attached to the band to provide completely uniform gasket pressure. This method eliminates the need to mold the spanner plate in the gasket, allowing the EZ-MAX to provide a faster seal during installation.

The EZ-MAX PLUS 4000 wraparound clamp requires no disassembly. The installer simply wraps the clamp around the pipe, slides it over the break, applies the quick-set lug system and tightens the bolts to the required torque. All work is performed from the topside of the low profile clamp, eliminating the need for extra excavation and under-dig for the wrench.

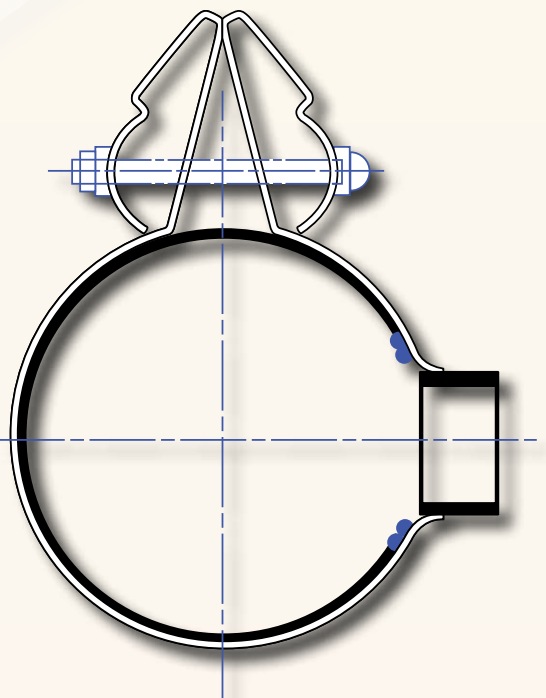
The EZ-MAX PLUS 4000 can be easily handled by one person due to the nature of its superior lightweight materials of construction. The repair clamp is equipped with a corrosion-resistant type 304 stainless steel pipe-reinforcing band, and comes with 304 stainless steel spanner, nuts and bolts.



Tapped Outlets for Versatility

- Taps available in all EZ-Max Plus Clamps sizes 3" - 12"
- ½ to 2 Inch Diameter Outlets
- EZ-MAX Plus sold as a saddle in 9" widths
- Superior **Proprietary TIG weld attachment method.**
- AWS Certified Weld Processes
- All Welds fully **Passivated**
- AWWA Threads (Corporation Cock "CC" threading)
- National Pipe Threads
- **Double "O" Ring Seal** at the branch
- Built tough for durability and a life time of service
- **150 PSI** Rated working pressure
- Standard double "O" Ring branch gasket for taps on Ductile Iron, Cast Iron, Steel, PVC, Polyethylene
- All Clamps Equipped with Service Outlets Meet or Exceed ANSI/AWWA C-800-07 entitled "Underground Service Line Valves and Fittings"

Repair Clamp with Tapped Outlet for Services Renewals and Hot Taps



- All Diameters from 3 to 12 Inch
- All Tap Sizes from ½ to 2 Inch
- AWWA (CC) Threads
- IP Threads
- All Outlets Attached with Passivated AWS Certified TIG Weld
- 8/10th Inch Wide Range
- NSF61 Registered EPDM Mat Type Pressure Assisted Gasket Available
- Non Glued Gasket Attachment
- EPDM Branch Gasketing (Specify for use on HDPE, since branch gasket differs from other pipe types)
- All Pipe Types Including Polyethylene
- Maxi Lube[®] Coating on Bolts Prevents Galling
- All 304 Stainless Steel No Weld Design
- Unique Patented Lug Assembly with Polycarbonate High Impact Lug Retainer
- No Disassembly Required Prior to Installation
- All AWWA Outlets Comply with ANSI/AWWA C 800-07
- Corded (reinforced) Matt Gasket maintains sealing pressure and reduces bolt torque loss.

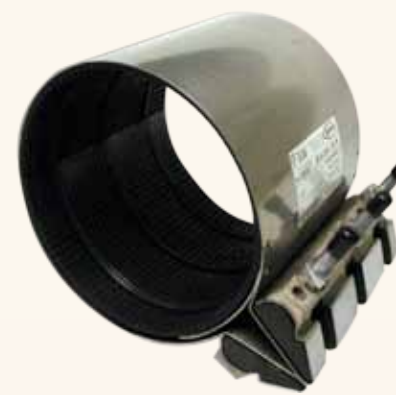
. . . The Proven Time-Saver



EZ-Max Plus 15 and 24" Wide



EZ-Max Plus 12" Wide



EZ-Max Plus 9" Wide

- For Water and Sewerage Applications, above and below ground
- Significant Inventory Reduction
- 100% More Range than Standard Repair Clamps (Accommodates a Pipe Range of 8/10ths an inch)
- Superior Combination of Mat-type Gasket with Pressure Ring Sealing Capabilities
- No-Glue Gasket Attachment
- Easy Fitting . . . Either two bolts (6-inch wide), three bolts (9-inch wide), four bolts (12-inch wide), five bolts (15-inch wide), eight bolts (24-inch wide)
- Bolts require no disassembly or removal
- Lightweight . . . can be handled by one person
- Available in diameters for 1.5 to 12 inches for all types of pipe ranging from IPS to Asbestos-Cement
- Wrap-around type installation
- 150 psi Rated Working Pressure
- Meets and Exceeds the new AWWA C230 Standard
- Compliant with new AWWA C230 Testing Standards for systems up to 150 psi
- New Shark Tooth Lug Assembly Allows for an Easy, Quick Installation

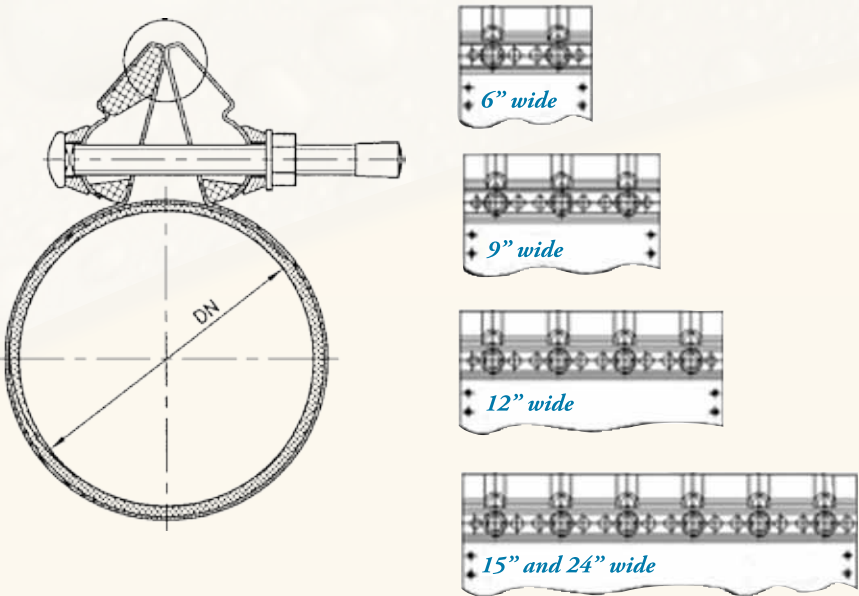
EZ-MAX® PLUS 4000 Series Specifications

Materials:
304 Stainless Steel Band and Lug Assembly
High Impact Polycarbonate Lug Retainer

Spanner Plate:
304 Stainless Steel, integral with the band assembly

Bolts and Nuts:
(ANSI 304/303) Stainless Steel protected with our proprietary Maxi-Lube® anti-seize type plating to prevent galling. Use of any additional wet-type lubricant will void the warranty of the product.

Gasket:
No-glue Waffled mat-type Gasket with pressure-assisted sealing rings.
NSF-61 Registered EPDM gasket available. The gasket is molded to include a lap type tapered end for easy installation and wrap around the pipe. Temperature range: -20° to 180°F.



EZ-MAX® PLUS Repair Clamp

| Part Number | Nominal Diameter (inch) | Width (inch) | Range (inch) | Approx. Weight (lbs.) |
|-------------------|-------------------------|--------------|----------------|-----------------------|
| 4006-0216-150 | 1.5" | 6" | 1.86 – 2.16" | 3 |
| 4006-0265-150 | 2" | 6" | 2.35 – 2.65" | 4 |
| 4006-0315-150 | 2.5" | 6" | 2.85 – 3.15" | 4 |
| 4009-0425-150-EXT | 3" | 9" | 3.42 – 4.25" | 8 |
| 4009-0527-150-EXT | 4" | 9" | 4.47 – 5.27" | 9 |
| 4009-0560-150-EXT | 4-5" | 9" | 4.80 – 5.60" | 9 |
| 4009-0630-150-EXT | 6" | 9" | 5.50 – 6.30" | 11 |
| 4009-0740-150-EXT | 6" | 9" | 6.60 – 7.40" | 11 |
| 4009-0764-150-EXT | 6" | 9" | 6.84 – 7.54" | 12 |
| 4009-0860-150-EXT | 8" | 9" | 7.80 – 8.60" | 12 |
| 4009-0940-150-EXT | 8" | 9" | 8.60 – 9.40" | 13 |
| 4009-0980-150-EXT | 8" | 9" | 9.00 – 9.80" | 14 |
| 4009-1153-150-EXT | 10" | 9" | 10.73 – 11.53" | 17 |
| 4009-1215-150-EXT | 10" | 9" | 11.35 – 12.15" | 17 |
| 4009-1355-150-EXT | 12" | 9" | 12.75 – 13.55" | 21 |
| 4009-1440-150-EXT | 12" | 9" | 13.60 – 14.40" | 22 |
| 4012-0527-150-EXT | 4" | 12" | 4.47 – 5.27" | 12 |
| 4012-0560-150-EXT | 4-5" | 12" | 4.80 – 5.60" | 12 |
| 4012-0630-150-EXT | 6" | 12" | 5.50 – 6.30" | 15 |
| 4012-0740-150-EXT | 6" | 12" | 6.60 – 7.40" | 15 |
| 4012-0764-150-EXT | 6" | 12" | 6.84 – 7.64" | 15 |
| 4012-0860-150-EXT | 8" | 12" | 7.80 – 8.60" | 18 |
| 4012-0940-150-EXT | 8" | 12" | 8.60 – 9.40" | 18 |
| 4012-0980-150-EXT | 8" | 12" | 9.00 – 9.80" | 18 |
| 4012-1153-150-EXT | 10" | 12" | 10.73 – 11.53" | 21 |
| 4012-1215-150-EXT | 10" | 12" | 11.35 – 12.15" | 21 |
| 4012-1355-150-EXT | 12" | 12" | 12.75 – 13.55" | 22 |
| 4012-1440-150-EXT | 12" | 12" | 13.60 – 14.40" | 23 |

| Part Number | Nominal Diameter (inch) | Width (inch) | Range (inch) | Approx. Weight (lbs.) |
|-------------------|-------------------------|--------------|----------------|-----------------------|
| 4015-0527-150-EXT | 4" | 15" | 4.47 – 5.27" | 15 |
| 4015-0560-150-EXT | 4-5" | 15" | 4.80 – 5.60" | 15 |
| 4015-0630-150-EXT | 6" | 15" | 5.50 – 6.30" | 16 |
| 4015-0740-150-EXT | 6" | 15" | 6.60 – 7.40" | 19 |
| 4015-0764-150-EXT | 6" | 15" | 6.84 – 7.64" | 19 |
| 4015-0860-150-EXT | 8" | 15" | 7.80 – 8.60" | 20 |
| 4015-0940-150-EXT | 8" | 15" | 8.60 – 9.40" | 22 |
| 4015-0980-150-EXT | 8" | 15" | 9.00 – 9.80" | 22 |
| 4015-1153-150-EXT | 10" | 15" | 10.73 – 11.53" | 27 |
| 4015-1215-150-EXT | 10" | 15" | 11.35 – 12.15" | 27 |
| 4015-1355-150-EXT | 12" | 15" | 12.75 – 13.55" | 34 |
| 4015-1440-150-EXT | 12" | 15" | 13.60 – 14.40" | 34 |
| 4024-0527-150-EXT | 4" | 24" | 4.47 – 5.27" | 24 |
| 4024-0560-150-EXT | 4-5" | 24" | 4.80 – 5.60" | 24 |
| 4024-0630-150-EXT | 6" | 24" | 5.50 – 6.30" | 29 |
| 4024-0740-150-EXT | 6" | 24" | 6.60 – 7.40" | 29 |
| 4024-0764-150-EXT | 6" | 24" | 6.84 – 7.64" | 29 |
| 4024-0860-150-EXT | 8" | 24" | 7.80 – 8.60" | 35 |
| 4024-0940-150-EXT | 8" | 24" | 8.60 – 9.40" | 35 |
| 4024-0980-150-EXT | 8" | 24" | 9.00 – 9.80" | 35 |
| 4024-1153-150-EXT | 10" | 24" | 10.73 – 11.53" | 42 |
| 4024-1215-150-EXT | 10" | 24" | 11.35 – 12.15" | 42 |
| 4024-1355-150-EXT | 12" | 24" | 12.75 – 13.55" | 54 |
| 4024-1440-150-EXT | 12" | 24" | 13.60 – 14.40" | 54 |