

## SWING OUT MAGNIFYING MIRROR INSTRUCTIONS

---

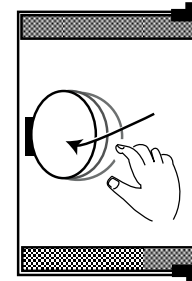
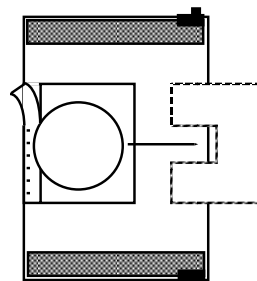
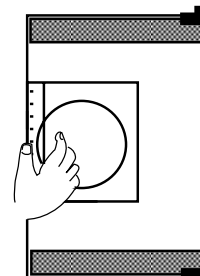
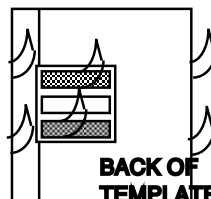
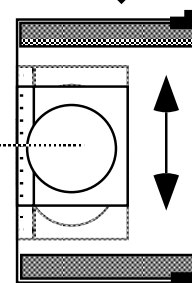
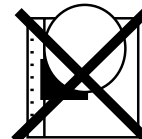
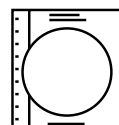
### **INSTALLER NOTE!**

1. DO NOT install this Magnifying Mirror until Homeowner approves location.
2. DO NOT remove from stretch wrap until ready to install.
3. When installing in cabinet models MP or MT, Mirror must fit between shelves.
4. Instructions for Magnifying Mirror are on the back of this sheet.

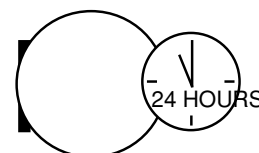
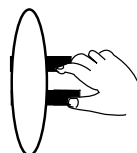
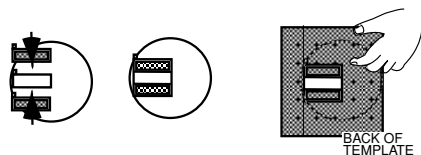
# SWING OUT MAGNIFYING MIRROR INSTRUCTIONS

Robern  
701 N. Wilson Ave.  
Bristol, PA 19007  
800.877.2376

1. Do NOT remove mirror from cardboard template!
2. Align arrow edge of template with inside edge of door opposite hinges at the desired height. Mirror can be placed on a left or right hinged door, simply turn template around. Please note that shelves in MP Series Cabinets must be moved above or below magnifying mirror.
3. Remove packing tape from the template and release liner from upper and lower hinge on the back of the template and place at desired height. Press firmly over hinge area.
4. Carefully separate cardboard template by tearing along perforations. Slide template out from back of mirror.
5. Mirror will click open when pulled from side opposite hinge. Press firmly on the upper and lower hinge to insure adhesion.
6. Leave mirror in closed position 4 hours before using. Problems? Call Robern's Toll Free Line 800.877.2376



(If mirror is dislodged from template, reinstall hinge pieces as shown below and press template printed side down over hinge assembly.)



US Patent No. 5,164,861  
SS529 SOMM. REV. 1 12/00