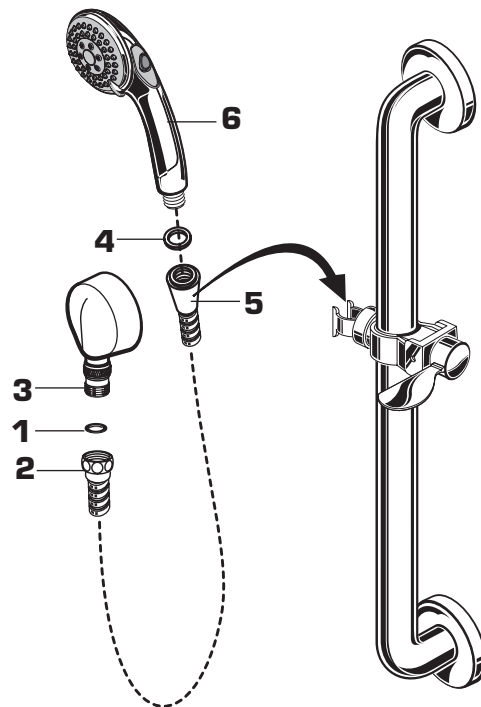


6

INSTALL HOSE AND HAND SHOWER TEST SHOWER SYSTEM

- Install SEAL (1) into COUPLING NUT (2). Connect COUPLING NUT (2) to WALL SUPPLY NIPPLE (3) and tighten.
- INSTALL second SEAL (4) into SPRAY HOSE END (5) and connect HAND SHOWER (6) to SPRAY HOSE END (5). Hand tighten.
- Turn on water supplies and check all functions of the SHOWER SYSTEM KIT. Check for any leaks.



CARE INSTRUCTIONS:

DO: SIMPLY RINSE THE PRODUCT CLEAN WITH CLEAR WATER. DRY WITH A SOFT COTTON FLANNEL CLOTH.

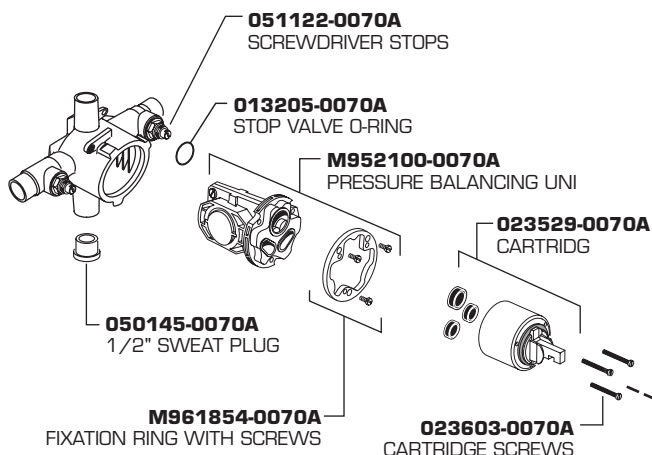
DO NOT: DO NOT CLEAN THE PRODUCT WITH SOAPS, ACID, POLISH, ABRASIVES, HARSH CLEANERS, OR A CLOTH WITH A COARSE SURFACE.

American Standard

PRESSURE BALANCE TEMPERATURE/VOLUME CONTROL VALVE

MODEL NUMBER

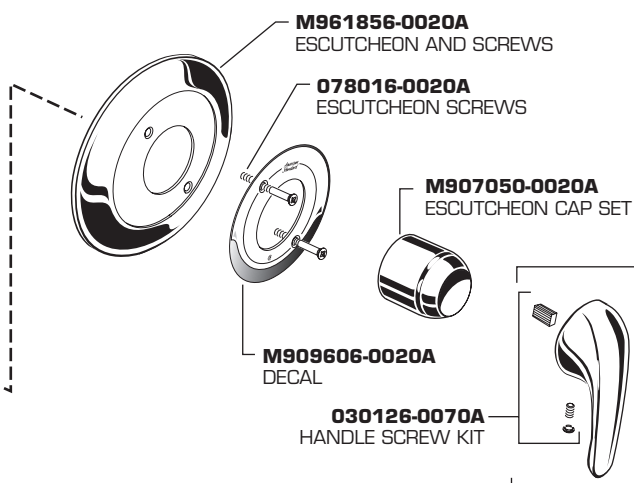
R120SS



COLONY SOFT VALVE TRIM

MODEL NUMBER

T675.500



HOT LINE FOR HELP

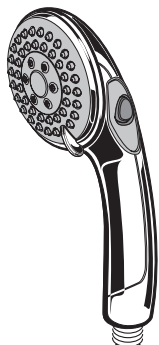
For toll-free information and answers to your questions, call:
1-800-442-1902
Weekdays 8:00 a.m. to 6:00 p.m. EST
IN CANADA 1-800-387-0369 (TORONTO 1-905-306-1093)
Weekdays 8:00 a.m. to 7:00 p.m. EST
IN MEXICO 01-800-839-1200

Appropriate finish code

CHROME 002

Product names listed herein are trademarks of American Standard Inc.
© AS America, Inc. 2015

M965666 (3/15)



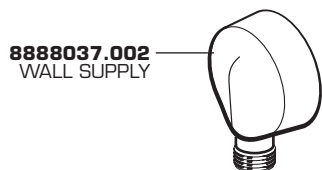
3-FUNCTION HAND SHOWER

1660766.002
(1.5 gpm)

1660767.002
(2.5 gpm)

WALL SUPPLY

8888.037.002

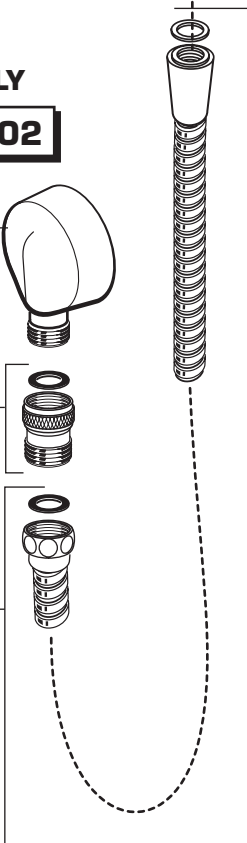
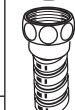


8888037.002
WALL SUPPLY

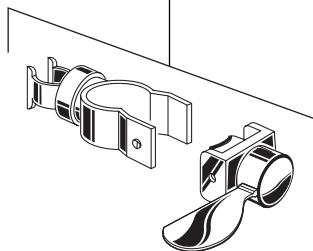
M962520-0020A
CHECK VALVE



030782-0020A
HOSE KIT



M9641800020A
SPRAY HOLDER
ASSEMBLY



METAL HOSE

8888.035.002

36" SLIDE BAR

1660.236.002



M964179-0070A
MOUNTING KIT



Appropriate finish code

CHROME 002



HOT LINE FOR HELP

For toll-free information and answers to your questions, call:
1-800-442-1902
Weekdays 8:00 a.m. to 6:00 p.m. EST
IN CANADA 1-800-387-0369 (TORONTO 1-905-306-1093)
Weekdays 8:00 a.m. to 7:00 p.m. EST
IN MEXICO 01-800-839-1200

Product names listed herein are trademarks of American Standard Inc.
© AS America, Inc. 2015