



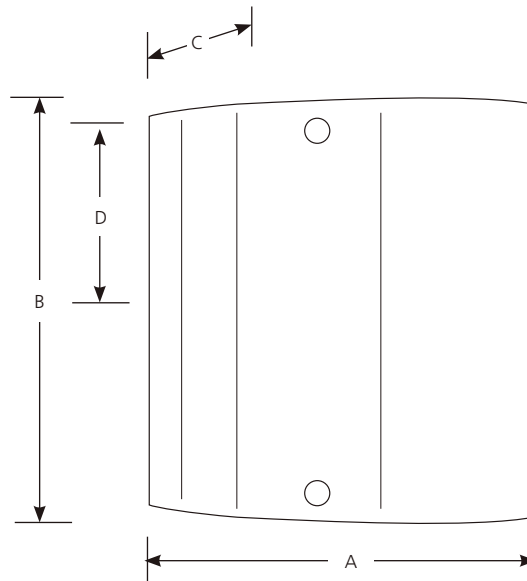
Compact Fluorescent

Clear & White Glass

Sconce

Type _____
-09EBWB
P7093 ☐

Catalog No.	Finish	Dimensions (Inches)					
	Brushed Nickel	Lamping	Socket	A	B	C	D
P7093	-09EBWB	2-13w Quad 4 pin (Included)	GX24q-1	11-1/4	11-5/16	3-1/2	3



Specifications:

General

- Smooth white glass diffuser
- Glass diffuser has top cover to shield the lamps
- Cover is attached with two brushed nickel threaded balls
- Complies with "Americans with Disabilities Act" - ADA
- Steel construction
- Two 13w 4 pin quad compact fluorescent lamps included
- Plated brushed nickel (-09)

Mounting

- Wall mount
- Unit covers a standard recessed 4" octagonal outlet box
- Mounting strap for outlet box included

Electrical

- 120v NPF electronic ballast
- 4 pin GX24q-1 based sockets
- Pre-wired

Labeling

- UL-CUL listed

Progress Lighting
701 Millennium Blvd.
Greenville, South Carolina
29607

www.progresslighting.com

Rev. 4/12



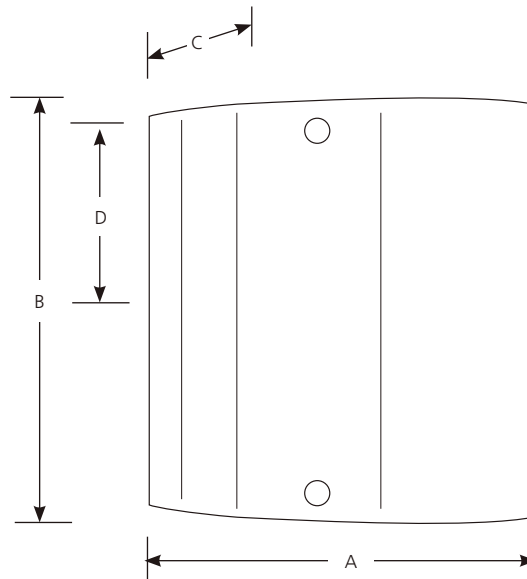
Compact Fluorescent

Clear & White Glass

Sconce

Type _____
-09
P7093 ☐

Catalog No.	Finish	Dimensions (Inches)					
	Brushed Nickel	Lamping	Socket	A	B	C	D
P7093	-09	2-13w Twin 2 pin	GX23	11-1/4	11-5/16	3-1/2	3



Specifications:

General

- Smooth white glass diffuser
- Glass diffuser has top cover to shield the lamps
- Cover is attached with two brushed nickel threaded balls
- Complies with "Americans with Disabilities Act" - ADA
- Steel construction
- Two 13w 2-pin twin compact fluorescent lamps
- Plated brushed nickel (-09)

Mounting

- Wall mount
- Unit covers a standard recessed 4" octagonal outlet box
- Mounting strap for outlet box included

Electrical

- 120v NPF magnetic ballast
- GX23 based sockets
- Pre-wired

Labeling

- UL-CUL listed

Progress Lighting
701 Millennium Blvd.
Greenville, South Carolina
29607

www.progresslighting.com

Rev. 10/09