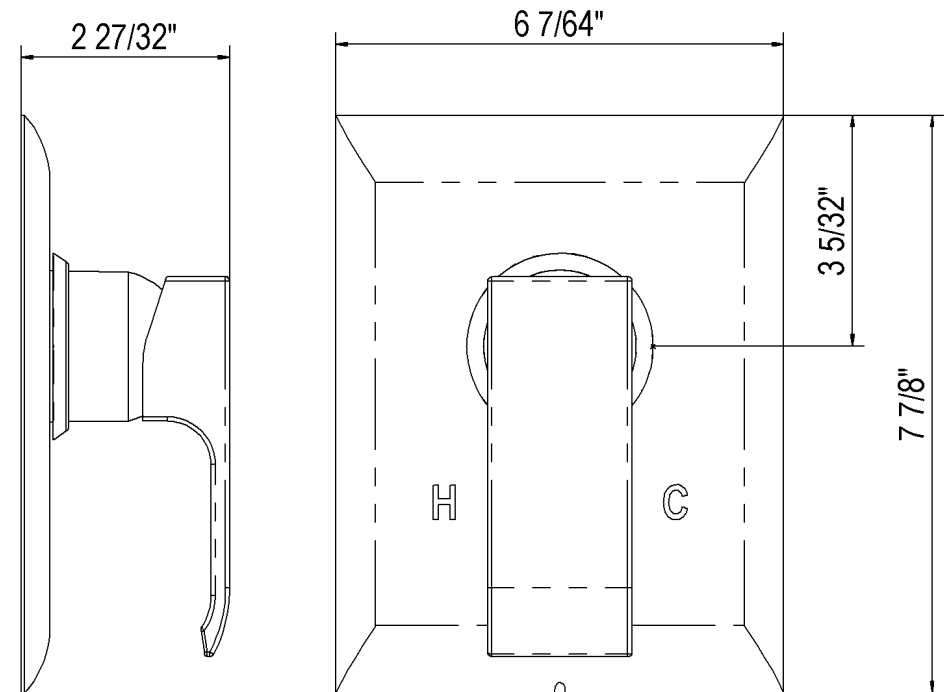


ROHL CASWELL PBV SHOWER TRIM SET

CA2213LMAPC, CA2213LMPN, CA2213LMSTN

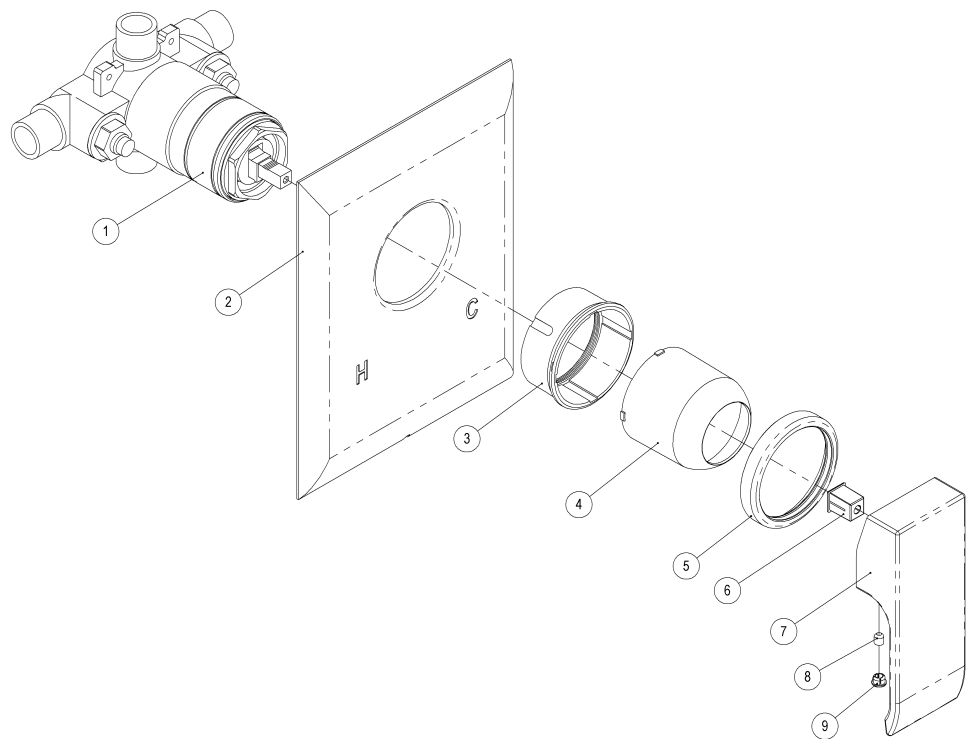
For Pressure Balance Without Diverter Rough Valve R2012D

INSTALLATION INSTRUCTIONS



Please leave instructions with the home owner once installed.

Installation Instructions



1	P.B.V SHOWER VALVE - NOT INCLUDED
2	FACEPLATE
3	FACEPLATE NUT
4	COVER SLEEVE
5	NUT TRIM COVER
6	LEVER INSERT
7	LEVER
8	GRUB SCREW M5 X 5/16"
9	CHROME BUTTON

1. Remove Mud cover and #3 faceplate nut from the rough valve. (Not shown.)
Please note: #3 faceplate nut (R945440) is included with the rough, not the trim package.
3/8" extension kit available; order R945440/2.
2. Install the faceplate #2 over PBV and set square to the wall with "H " (hot) on the left.
3. Slide the cover sleeve #4 inside the 4 grooves of the faceplate nut #3. Install to the PBV, using the cover sleeve as a tool and tighten.
 - a. Apply **grease to the o-rings** on the PBV for cover sleeve install.
 - b. Note: The edge of the faceplate nut holds the faceplate firm against the finished wall.
4. Slide the nut trim cover #5 over cover sleeve and against the faceplate.
5. Install the lever #7 as shown.

Operation of valve:

Install the lever in the down or 6 O'Clock position.

Tip up for on and to regulate volume.

Turn to 7 O'Clock for Hot.

Turn to 5 O'Clock for Cold.

Care and Maintenance: After use, wipe down with a soft, dry cloth.

For all chrome plated surfaces clean this product with warm soapy water and then dry with a dry soft cloth.

Nickel plated, satin and Inca brass finishes should be cleaned with a soft cloth and warm water and then dried with a dry soft cloth.

Do not use cream cleaners or cleaning agents containing a corrosive acid or scouring agent including: Softscrub, Comet, Ajax and Bonami, as these may damage the surface of the faucet.

Do not use any spray cleaners with ammonia or alcohol like Windex, 409 or Fantastik.

Any use of unsuitable cleaning agents causing damage to the surface will not be covered by the warranty.

WARRANTY: Warranty is limited lifetime. See ROHL website for details. (www.rohlhome.com)

A basic in-line filter system is required for the house to protect any debris from entering the water supply line to the house (i.e. due to construction or service work on the street water main).