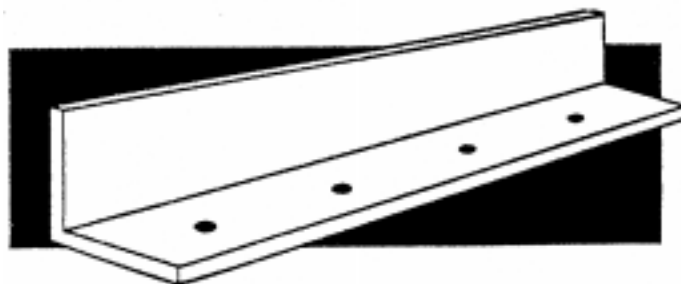


# RETAINING ANGLE FOR FIRE DAMPERS

- 1-1/2 X 1-1/2 X 16 ga & 1-1/2 x 1-1/2 x 14 ga cold formed galvanized angle
- Pre-punched 7/32 holes for faster fastening of angle to sleeve
- 20 foot lengths minimize scrap (25 lengths per bundle)
- SMACNA E class rigidity (may be used for duct reinforcement)
- In stock at your Ductmate distributor
- Other angle sizes and materials available (consult your distributor)

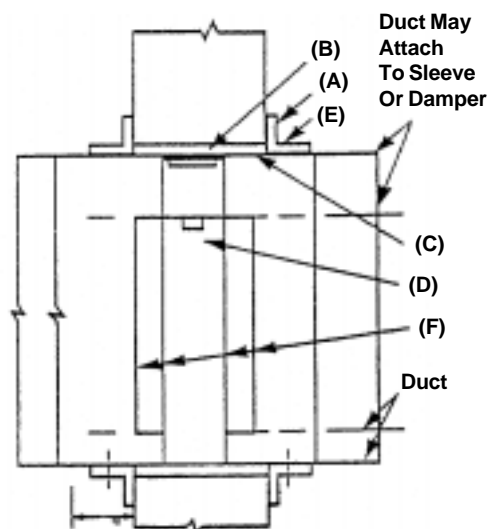


**MEETS  
ASHRAE,  
SMACNA  
and UMC  
STANDARDS**

## Typical Installation Details

- (A) Retaining Angles:  
Minimum 1 1/2 x 1 1/2 x 0/058  
(16 ga.) Retaining angles must  
lap structural opening 1" minimum  
and cover corners of openings.
- (B) Clearance: 1/8" Per Linear  
Foot Both Dimensions.
- (C) Steel Sleeve
- (D) Approved Fire Damper  
(curtain or blade type)

- (E) Secure Retaining Angle to  
Sleeve Only on 8" Centers With:
1. 1/2 long welds or
  2. 1/4 Bolts and Nuts, or
  3. No. 10 screws, or
  4. Minimum 3/16 Steel Rivets
- (F) Secure Damper To Sleeve On 8"  
Centers With:
1. 1/2 long welds, or
  2. 1/4 Bolts and Nuts, or
  3. No. 10 Steel Screws, or
  4. Minimum 1/16 Steel Rivets



## PACKAGING:

PART NUMBER	DESCRIPTION	WEIGHT	LENGTH/BUNDLE
AI2.812GA16	1-1/2" X 1-1/2" X 16 GA	.62 LBS/FT	20' pcs/500' bdl
AI2.812GA14	1-1/2" X 1-1/2" X 14 GA	.73 LBS/FT	20' pcs/500' bdl