

# ELKAY<sup>®</sup>

## SPECIFICATIONS

### No Lead SwirlFlo<sup>®</sup> Drinking Fountain Fully Exposed Wall Mount Barrier-Free Access Model EDFPB114C

#### GENERAL

Wall mounted drinking fountain basin constructed of #18 gauge, 300 series stainless steel polished to a lustrous satin finish with high shined outer edge. #16 gauge, type 304 tubular stainless steel support arm incorporates a recess to be integrated with basin.

Contoured basin minimizes splashing and has exclusive Flexi-Guard<sup>®</sup> safety bubbler to prevent accidental mouth injuries. Keyed in location to prevent rotation. Fully functional, vandal-resistant front push button is easy to operate. Flow regulator provides constant stream from 20 to 105 psi water pressure.

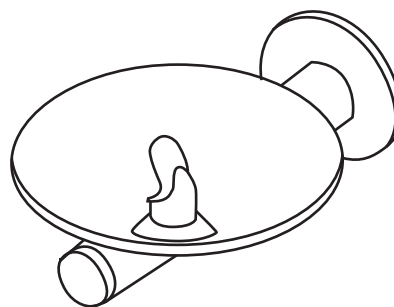
**THIS WATER COOLER COMPLIES WITH THE REQUIREMENTS OF A.D.A. (AMERICANS WITH DISABILITIES ACT).**

#### NO LEAD DESIGN

**THIS DRINKING FOUNTAIN COMPLIES WITH THE LEAD-FREE DEFINITION IN THE SAFE DRINKING WATER ACT OF 1986 AND LEAD CONTAMINATION CONTROL ACT OF 1988.**

Elkay Drinking Fountains are manufactured with a waterway system utilizing copper components and completely lead-free material. These waterways have no lead because all leaded materials, such as leaded brass, have been removed.

This fountain is certified by WQA to lead-free compliance including NSF/ANSI 61 and 372.



Model EDFPB114C

#### CONSTRUCTION

EDFPB114C furnished complete with Flexi-Guard<sup>®</sup>, fully assembled front push button, flow regulator (20 to 105 psi). No trap furnished.

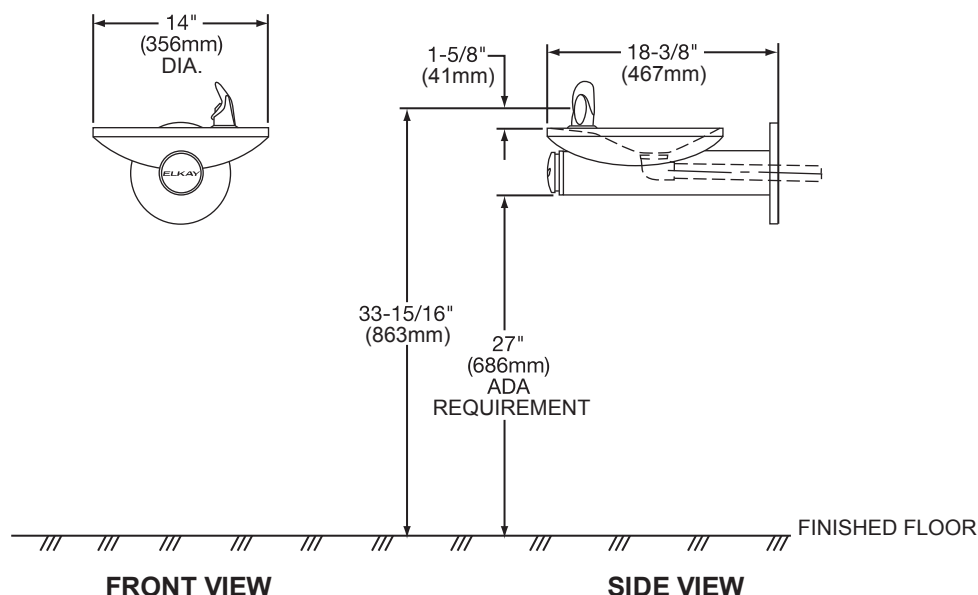
#### ACCESSORIES

**MPW101** In-wall mounting plate carrier accessory.

**ML100** Optional in-wall support legs for use with MPW101.

#### ALSO AVAILABLE

**EDFPBV114C** includes a one-piece construction, heavy-duty, vandal-resistant bubbler.



*In keeping with our policy of continuing product improvement, Elkay reserves the right to change product specifications without notice.*

*This specification describes an Elkay product with design, quality and functional benefits to the user. When making a comparison of other producers' offerings, be certain these features are not overlooked.*

**Elkay**

elkaypro.com

2222 Camden Court  
Oak Brook, IL 60523

Printed in U.S.A.  
©2014 Elkay

(Rev. 1/14) 14-43D

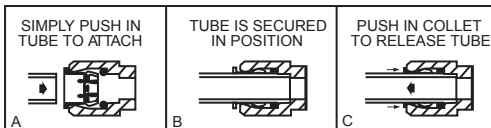
**No Lead SwirlFlo® Drinking Fountain**  
**Fully Exposed Wall Mount**  
**Barrier-Free Access**  
**Model EDFPB114C**

**ELKAY®**  
**ROUGH-IN DIMENSIONS**

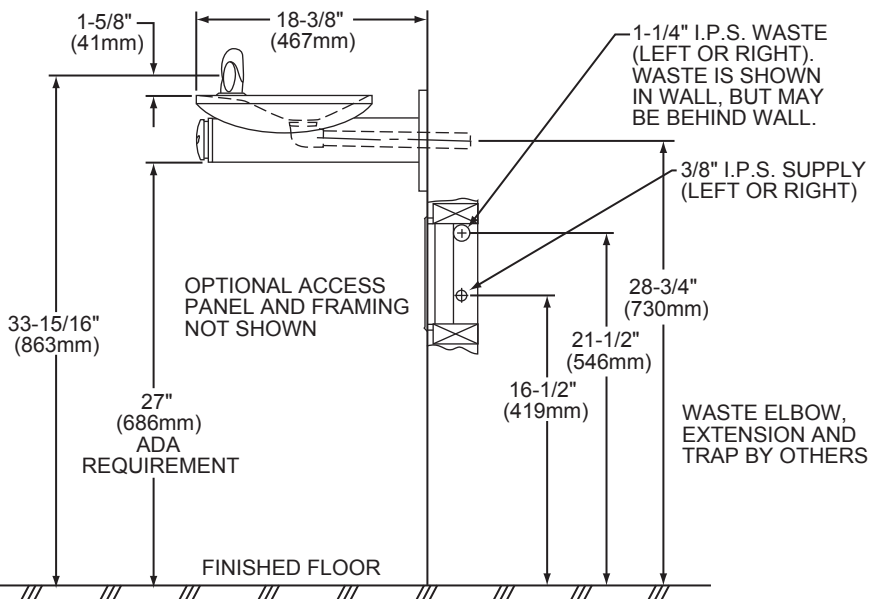
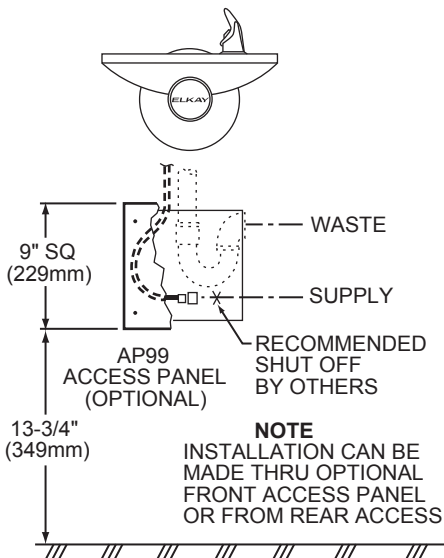
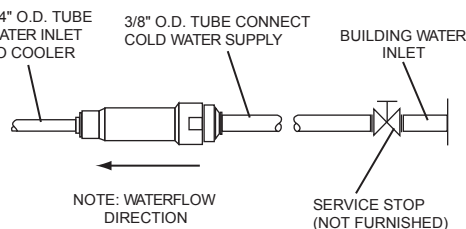
**INSTALLER NOTE**

THIS DRINKING FOUNTAIN IS FURNISHED WITH A BUBBLER AND VALVE INCLUDING ALL CONNECTING FITTINGS WHICH ARE MANUFACTURED OF COMPLETELY LEAD-FREE MATERIAL. SHUT OFF VALVE (NOT FURNISHED) TO ACCEPT 3/8" O.D. UNPLATED COPPER TUBE.

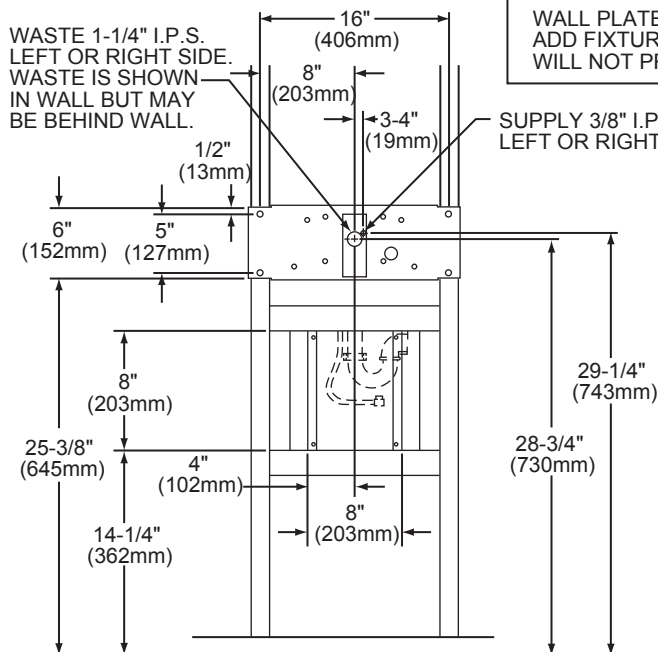
**OPERATION OF QUICK CONNECT FITTINGS**



PUSHING TUBE IN BEFORE PULLING IT OUT HELPS TO RELEASE TUBE

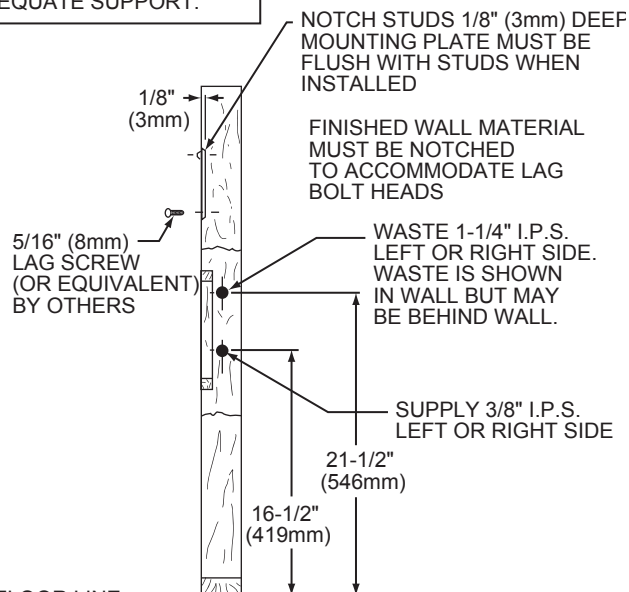


**SUPPORT PREPARATION**



**FRONT VIEW**

**NOTE**  
 WALL PLATE MUST BE SUPPORTED SECURELY. ADD FIXTURE SUPPORT CARRIER IF WALL WILL NOT PROVIDE ADEQUATE SUPPORT.



**SIDE VIEW**