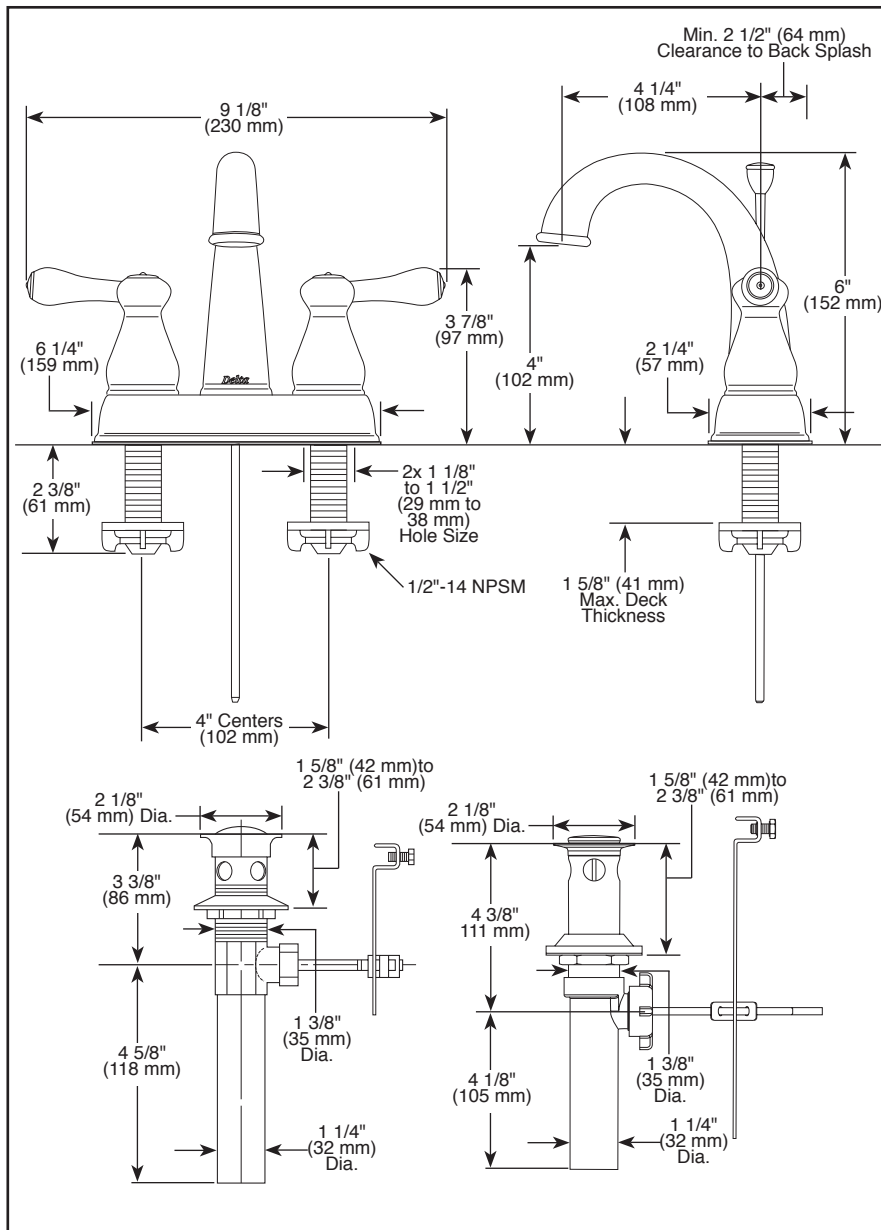


Submitted Model No.: \_\_\_\_\_

Specific Features: \_\_\_\_\_



▲ Designate proper finish suffix

# **LAVATORY** **FAUCETS**

- Leland® Bath Series
- Two Handle Deck Mount

## **STANDARD SPECIFICATIONS:**


- Maximum 1.5 gpm @ 60 PSI, 5.7 L/min @ 414 kPa
- Three hole mount
- 1/4 turn handle stops
- Hot and cold stems are interchangeable
- Control mechanism is the rotating cylinder type with stainless steel plate and 90° rotation, with replaceable non-metallic seats operating in stainless steel lined sockets
- 1/2"-14 NPSM threaded male inlet shanks
- Models without "MPU" suffix include polypropylene pop-up type drain fitting with plated metal flange and stopper cap
- Models with "MPU" suffix include metal drain with pop-up type drain fitting with plated flange and stopper cap
- Optional thick deck kit (RP76691) adds 1 1/4" max. deck thickness

## **WARRANTY**

- Lifetime limited warranty on parts (other than electronic parts and batteries) and finishes: or, for commercial users, for 5 years from date of purchase.
- 5 year limited warranty on electronic parts (other than batteries); or, for commercial users, for 1 year from the date of purchase. No warranty is provided on batteries.



## **COMPLIES WITH:**

- ASME A112.18.1 / CSA B125.1
- ASME A112.18.2 / CSA B125.2
-  Indicates compliance to ICC/ANSI A117.1
- EPA WaterSense®
- Verified compliant with .25% weighted average Pb content regulations.

**DELTA**  
FAUCET COMPANY

55 E. 111th Street, Indianapolis, IN 46280  
350 South Edgeware Road, St. Thomas, ON N5P 4L1  
© 2015 Masco Corporation of Indiana

Delta reserves the right (1) to make changes in specifications and materials, and (2) to change or discontinue models, both without notice or obligation. Dimensions are for reference only. See current full-line price book or [www.deltafaucet.com](http://www.deltafaucet.com) for finish options and product availability.