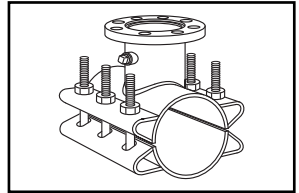


SUBMITTAL INFORMATION

Steel Tapping Sleeve - (FTSC-xxx-x style)



STEEL TAPPING SLEEVE (EPOXY COATED) - 4" TO 16"

Flange - ASTM A36 Carbon Steel - Flat face, recessed for standard tapping valve.

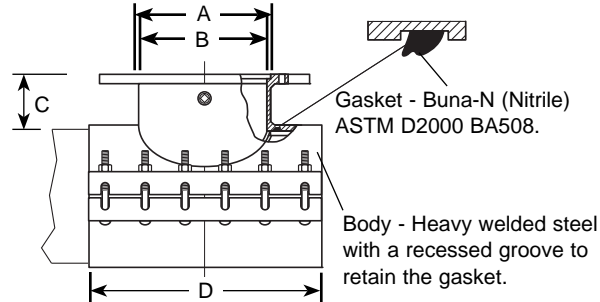
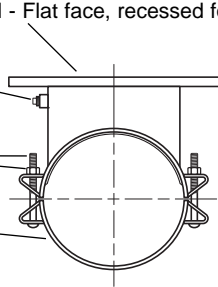
3/4-14 No-Lead Brass

Test Plug

Bolts and Nuts -

Grade 18-8 type 304 stainless steel

Finish - Fusion-bonded epoxy coating no less than 12 mils thick



Body - Heavy welded steel with a recessed groove to retain the gasket.

NOM. PIPE SIZE	SLEEVE O.D. RANGE	BY	FLANGE SIZE CODE**	NOMINAL DIMENSIONS - INCHES				No. OF BOLTS	APPROX. WT. LBS.	SLEEVE NUMBER***	✓ SUBMITTED ITEM(S)
				A	B	C	D				
4"	4.50 - 4.80	X	3	4-3/64	3-1/16	5-1/16	12	6	40	*FTSC-480 -	
			4	5-3/64	4-1/8	5-1/16	12	6	41		
6"	6.57-6.73	X	3	4-3/64	3-1/16	5-3/16	12	6	64	*FTSC-673-	
	6.83-7.16		4	5-3/64	4-1/8	5-3/16	12	6	65	FTSC-716-	
	7.20-7.60		6	7-3/64	6-1/4	5-3/16	12	6	72	FTSC-760-	
	7.40-7.73		6	7-3/64	6-1/4	5-3/16	12	6	72	FTSC-773-	
8"	7.95-8.05	X	3	4-3/64	3-1/16	5-3/16	12	6	72	**FTSC-805-	
	8.36-8.75		4	5-3/64	4-1/8	5-3/16	12	6	73	*FTSC-875-	
	8.73-9.12		6	7-3/64	6-1/4	5-3/16	12	6	79	FTSC-912-	
	8.89-9.37		6	7-3/64	6-1/4	5-3/16	12	6	79	FTSC-937-	
	9.27-9.69		8	9-3/64	8-1/4	5-3/16	16	8	106	FTSC-969	
10"	9.95-10.10	X	3	4-3/64	3-1/16	5-3/16	12	6	81	**FTSC-1010-	
	9.95-10.10		4	5-3/64	4-1/8	5-3/16	12	6	82	**FTSC-1010-	
	10.45-10.88		6	7-3/64	6-1/4	5-3/16	12	6	87	FTSC-1088-	
	11.03-11.47		8	9-3/64	8-1/4	5-3/16	16	8	117	FTSC-1147-	
	11.36-11.80		10	11-3/64	10-1/4	5-3/16	20	10	153	FTSC-1180-	
12"	11.76-12.20	X	3	4-3/64	3-1/16	5-3/16	12	6	92	**FTSC-1220-	
	11.76-12.20		4	5-3/64	4-1/8	5-3/16	12	6	93	**FTSC-1220-	
	12.42-12.88		6	7-3/64	6-1/4	5-3/16	12	6	98	FTSC-1288-	
	13.13-13.60		8	9-3/64	8-1/4	5-3/16	16	8	130	FTSC-1360-	
	13.60-14.09		10	11-3/64	10-1/4	5-3/16	20	10	169	FTSC-1409-	
	14.10-14.58		12	13-3/64	12-1/4	5-3/16	24	12	216	FTSC-1458-	
14"-16"	14.59-15.08	X	3	4-3/64	3-1/16	5-3/16	12	6	98	**FTSC-1508-	
	14.59-15.08		4	5-3/64	4-1/8	5-3/16	12	6	99	**FTSC-1508-	
	15.23-15.72		6	7-3/64	6-1/4	5-3/16	12	6	105	FTSC-1572-	
	15.73-16.22		8	9-3/64	8-1/4	5-3/16	16	8	139	FTSC-1622-	
	16.30-16.73		10	11-3/64	10-1/4	5-3/16	20	10	178	FTSC-1673-	
	16.74-17.26		12	13-3/64	12-1/4	5-3/16	24	12	230	FTSC-1726-	

*Size on size taps for these units may require a 1/2" under size cutter.

** Size on size for this range not available.

*** To order: Add Flange Size Code to the Sleeve Number. Example: A 4" flange on 6" cast iron pipe would be FTSC-716-4.

FEATURES

- Heavy welded steel meeting ASTM A36 36,000 psi minimum yield
- Bolts and nuts are made of Grade 18-8 type 304 stainless steel
- Ring style gasket is Buna-N (Nitrile) ASTM D2000 BA508
- Fusion-bonded epoxy-coating on body is no less than 12 mils thick
- UL Classified to ANSI/NSF Standard 61

The Ford Meter Box Company considers the information in this submittal form to be correct at the time of publication. Item and option availability, including specifications, are subject to change without notice. Please verify that your product information is current.



The Ford Meter Box Company, Inc.

P.O. Box 443, Wabash, Indiana U.S.A. 46992-0443

Phone: 260-563-3171 / Fax: 800-826-3487

Overseas Fax: 260-563-0167

<http://www.fordmeterbox.com>

08/20/13

Submitted By: