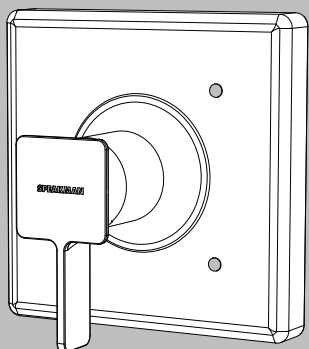
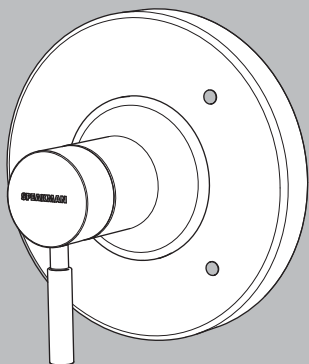


## INSTRUCTIONS FOR MODELS

CPT-1000-TP  
CPT-1300-TP



### NEED HELP?

For additional assistance or service please contact:

**SPEAKMAN®** Company  
400 Anchor Mill Road  
New Castle, DE 19720

800-537-2107

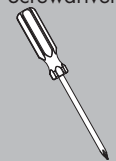
customerservice@speakmancompany.com

www.speakmancompany.com

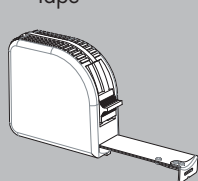
92-CPT-1000-TP-R1

## TOOLS AND SUPPLIES

Phillips  
Screwdriver



Measuring  
Tape



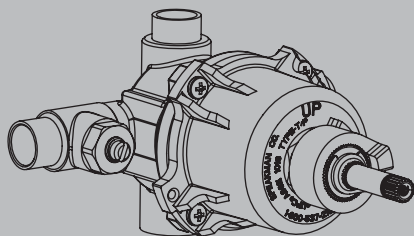
### IMPORTANT



- Circular Trim Package shown for reference. While the appearance of your trim may be different, the installation steps are the same.

- This Trim Package is intended to mount to the following Speakman valve. Please verify the model of your valve prior to installation.

**SPEAKMAN®** SentinelPro®  
CPV-5000 Thermostatic / Balance Pressure Valve



\*NOT FOR USE WITH DIVERTER/VOLUME CONTROL MODELS

### SAFETY TIPS

Cover your drain to prevent loss of parts. Be sure to always wear proper eye protection.

### MAINTENANCE

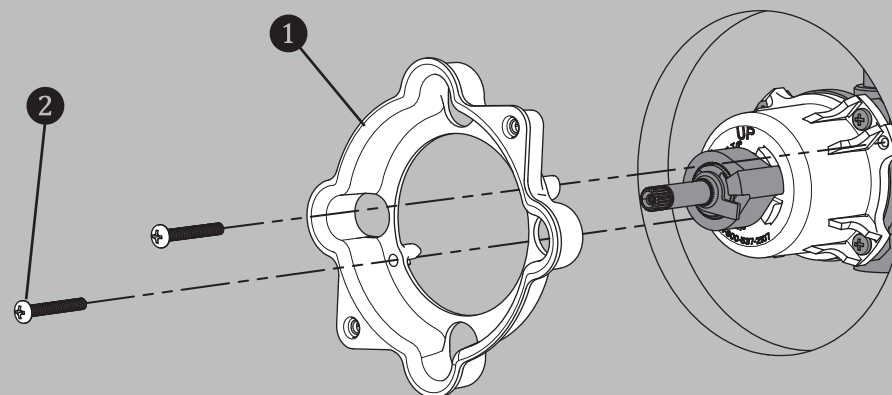
Your new Valve Trim is designed for years of trouble-free performance. Keep it looking new by cleaning it periodically with a soft cloth. Avoid abrasive cleaners, steel wool, and harsh chemicals as these will dull the finish and void your warranty.

### WARRANTY

Additional warranty information can be found at:  
www.speakmancompany.com

1

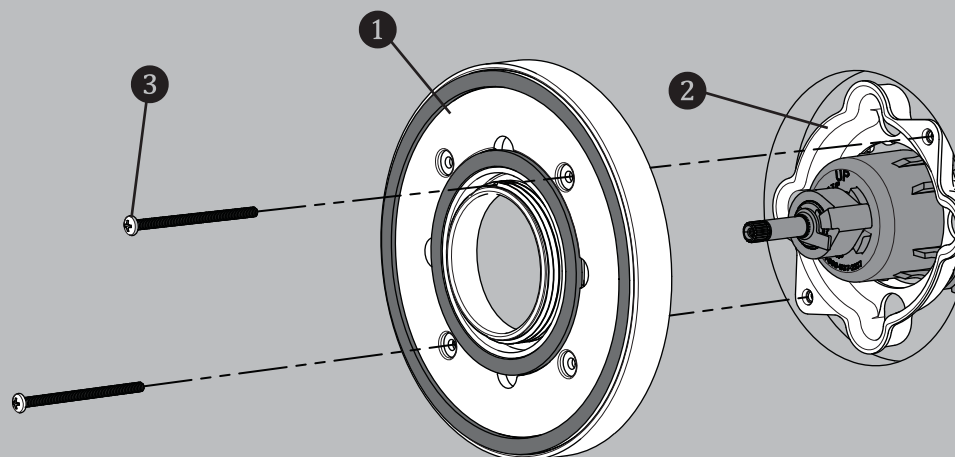
Clean front surface of wall. Install Valve Mounting Plate (1) to Speakman Valve, using the 8-32 x 1-1/8" screws (2) provided. Take care to not over tighten mounting screws.



**NOTE:** The Valve Mounting Plate Assembly (1) should sit flush against the Speakman Valve when installed correctly.

2

Secure the Wall Mounting Plate (1) to the Valve Mounting Plate (2) using the 8-32 X 2 1/2" Screws (3) provided.

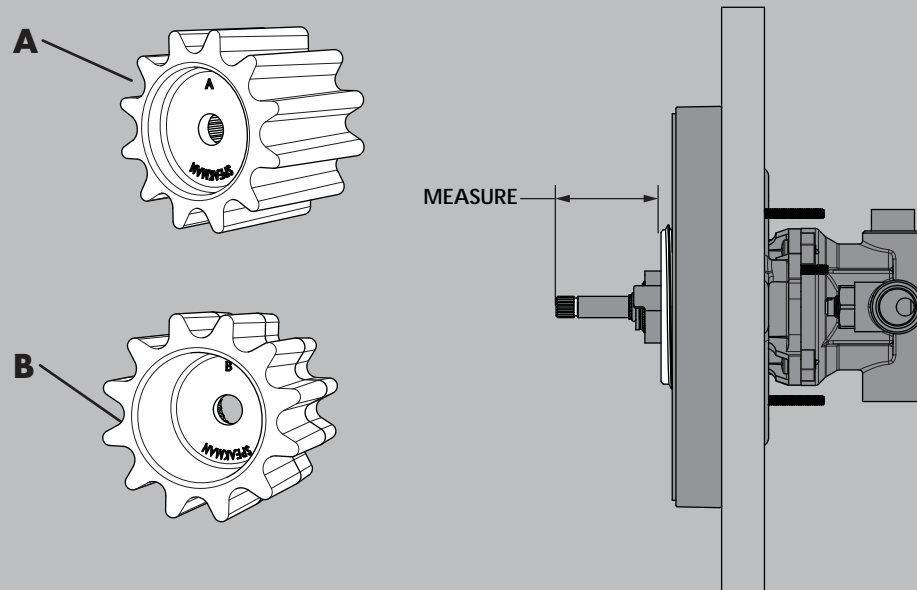


**NOTE:** The back surface of the Valve Mounting Plate Assembly (1) should sit flush against the wall when installed correctly.

3

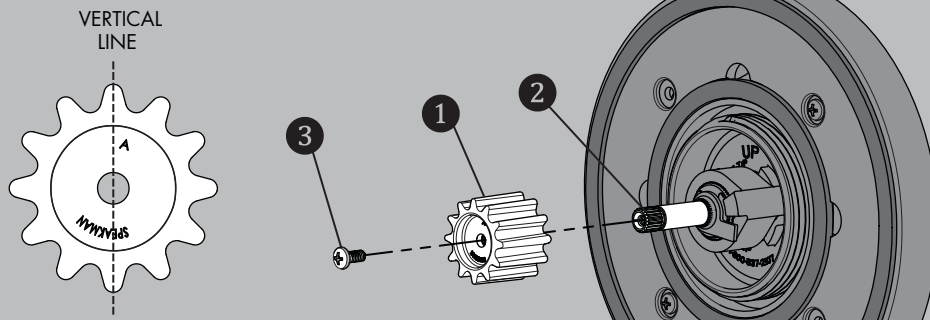
The Universal Valve Trim kit includes two Spline Adapters that allow for both shallow and deep valve mount installations. Measure the distance between the front lip of the Wall Mounting Plate and the end of the Valve Spindle as shown below to determine correct selection of Spline Adapter.

- If the measurement falls between **1-7/8" to 2-1/2"**, the Spline Adapter marked **"A"** is needed for installation.
- If the measurement falls between **1-3/8" to 1-7/8"**, the Spline Adapter marked **"B"** is needed for installation.



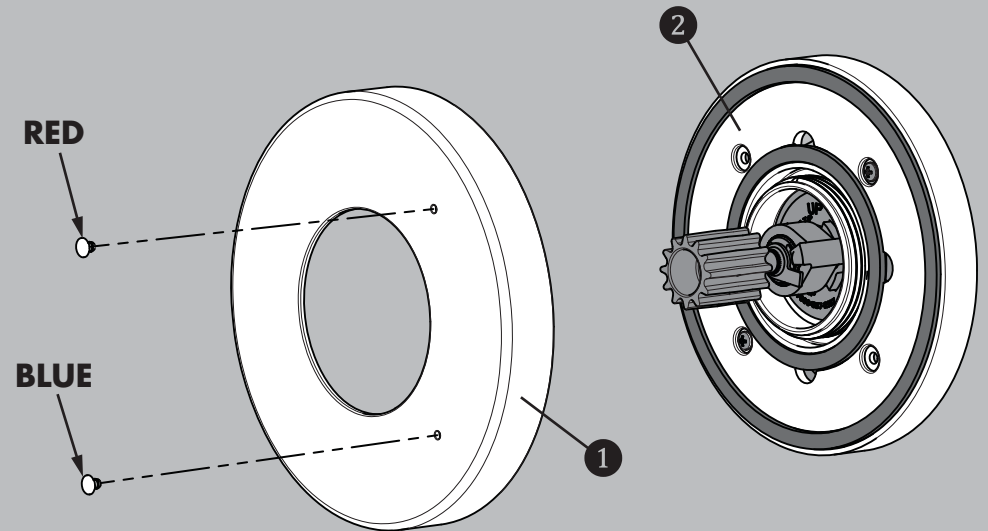
4

Confirm that the Valve is in the off position. Insert Spline Adapter (1) (Spline Adapter selection determined in Step 3) over Valve Spindle (2). One set of splines on the adapter must be oriented perfectly vertical when installed, as shown below. Secure the Spline Adapter with the 8-32 X 3/8" Screw (3) provided.



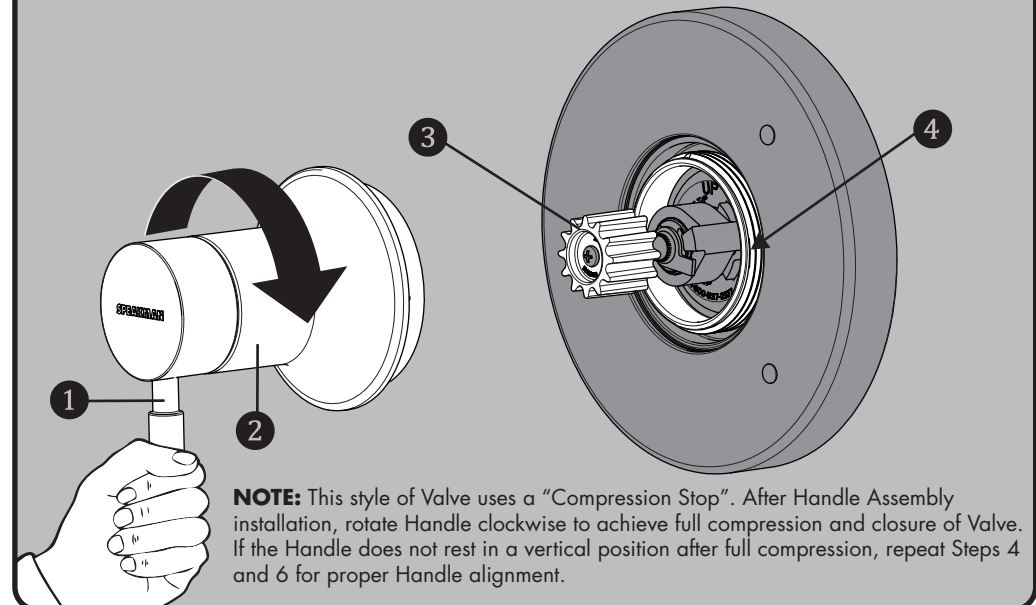
5

Orient the Decorative Wall Plate (1) as shown below and insert the RED index button into the top hole of the Wall Plate, and the BLUE index button into the lower hole. Slide Wall Plate Assembly over Wall Mounting Plate (2).



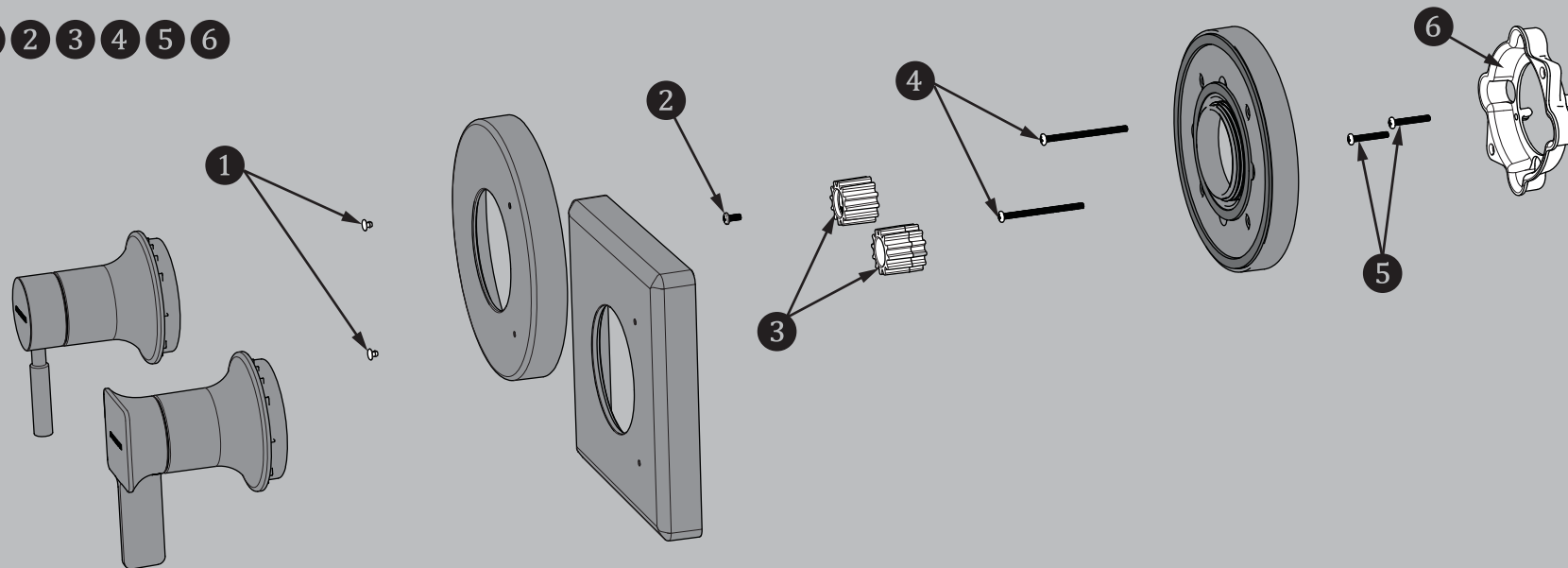
6

Orient the Handle Assembly in a vertical position as shown below. Guide Handle Assembly onto the Spline Adapter (3). While holding the Handle (1) stationary in the vertical position, thread the Handle Escutcheon (2) onto the Wall Mounting Plate (4). Hand tighten until snug.

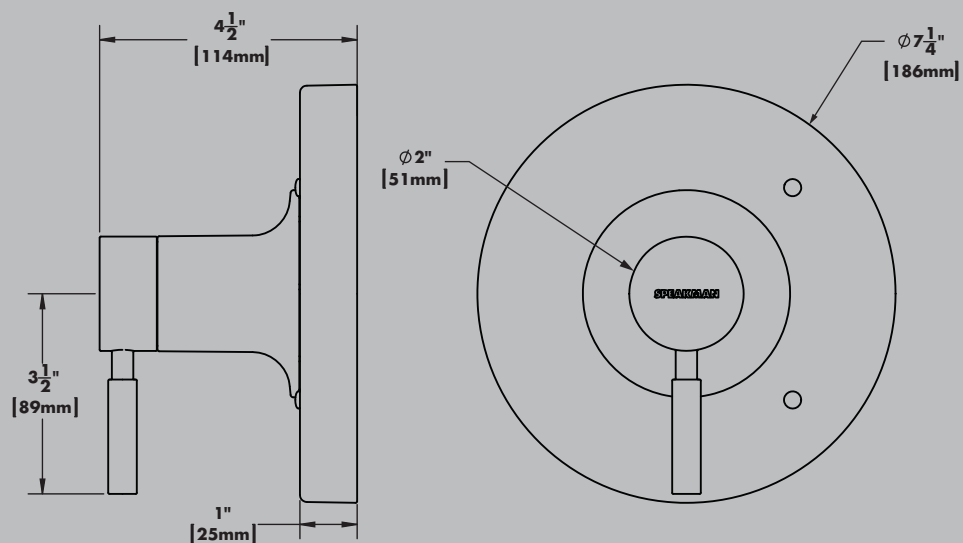


## REPAIR PARTS

•RPG10-0118 1 2 3 4 5 6

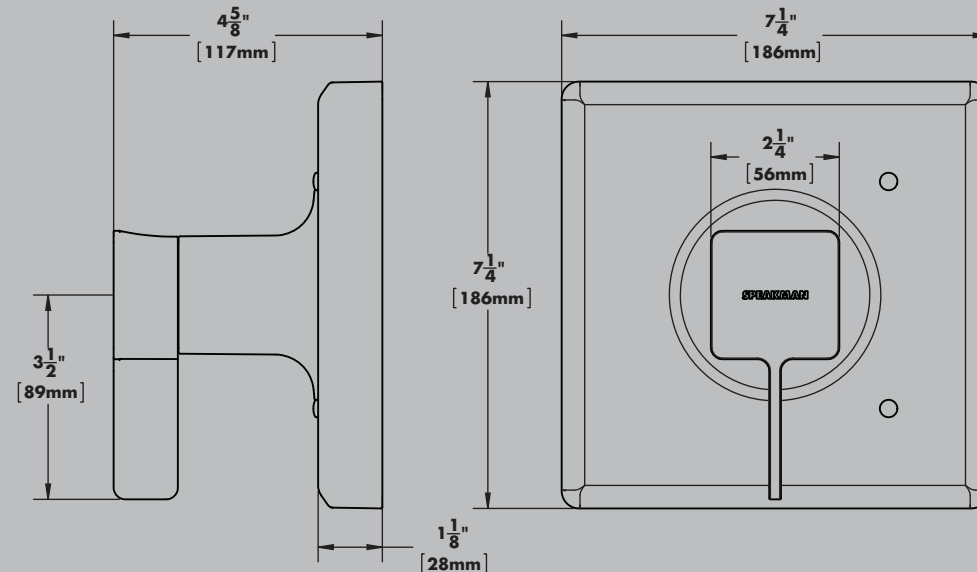


## ROUGH-IN DIMENSIONS: CPT-1000-TP



•Dimensions are subject to change without notice.

## ROUGH-IN DIMENSIONS: CPT-1300-TP



•Dimensions are subject to change without notice.