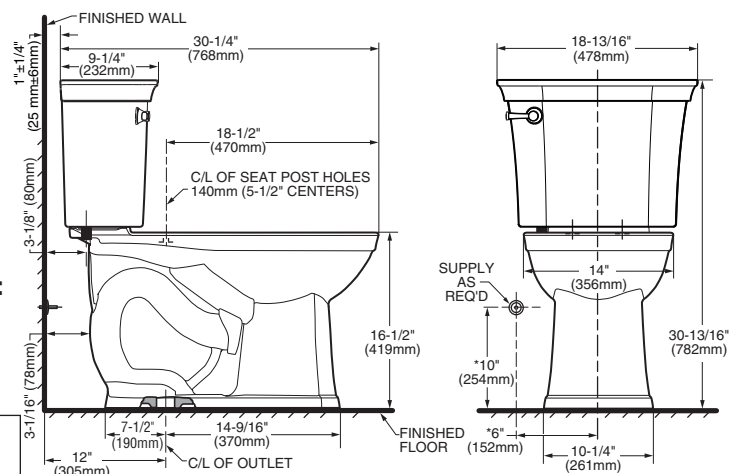


VITREOUS CHINA

- **VorMax flushing technology cleans two times better than conventional toilets^Δ**
- CleanCurve™ rim eliminates rim area where dirt and buildup hide
- Vitreous china
- HET (High Efficiency Toilet) ultra-low consumption 1.28 gpf/4.8 Lpf, utilizes 20% less water
- Meets EPA WaterSense® criteria
- Elongated siphon action jetted bowl
- 16-1/2" rim height for accessible applications
- Fully glazed 2-1/16" trapway
- Dual injection flush valves
- Classic traditional styling on bowl and tank
- EverClean® surface included
- Chrome trip lever
- Includes EZ-Install tools with color matched bowl caps
- 10 year warranty
- Generous 9-1/4" x 8-1/4" water spot
- Best 1,000g MaP Score** at 1.28 gpf
- **Coordinates with Estate® Suite of fixtures**
- **Available Exclusively at Ferguson® Showrooms**



- ASME A112.19.2-2008/CSA B45.1-08 for Vitreous China Fixtures
- US EPA WaterSense® Specification for HETs



☐ Seat: 5214.210 Traditional Elongated Easy Lift-off
Slow Close Seat

IMPORTANT: Dimensions of fixtures are nominal and may vary within the range of tolerance established by ANSI Standard A112.19.2. These measurements are subject to change or cancellation. No responsibility is assumed for use of superseded or voided pages.

** Maximum Performance (MaP) testing performed by IAPMO R&T Lab. MaP Report conducted by Gauley Associates Ltd. and Koeller and Company.

