

Application

Designed for installation on water lines in fire protection systems to protect against both backsiphonage and back-pressure of contaminated water into the potable water supply. The Model 375ADA shall provide protection where a potential health hazard exists. Incorporates metered by-pass to detect leaks and unauthorized water use.

Standards Compliance

- ASSE® Listed 1047 (2 1/2" - 8")
- CSA® Certified B64.4 (2-1/2" - 8")
- AWWA Compliant C550
- UL® Classified
- C-UL® Classified
- FM® Approved
- Approved by the Foundation for Cross Connection Control and Hydraulic Research at the University of Southern California.
- NYC MEA 104-05-M
- Meets the requirements of NSF/ANSI 61*

*(0.25% MAX. WEIGHTED AVERAGE LEAD CONTENT)

By-Pass Backflow Assembly 3/4" Model 975XLD

Materials

Main valve body Ductile Iron ASTM A 536
Access covers Ductile Iron ASTM A 536
Coatings NSF Approved fusion epoxy finish
Internals Stainless steel, 300 Series
NORYL™

Fasteners & Springs Stainless Steel, 300 Series
Elastomers EPDM (FDA approved)
Buna Nitrile (FDA approved)

Polymers NORYL™
Sensing line Stainless steel, braided hose

Features

Sizes: 2 1/2", 3", 4", 6", 8", 10"

Maximum working water pressure 175 PSI
Maximum working water temperature 140°F
Hydrostatic test pressure 350 PSI
End connections (Grooved for steel pipe) AWWA C606
(Flanged) ANSI B16.1
Class 125

*2 1/2" & 3" sizes use 4" body & reducer coupling

Dimensions & Weights (do not include pkg.)

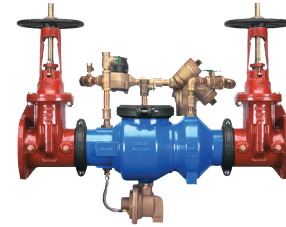
| MODEL 375ADA SIZE | | WEIGHT | | | | | | | | | |
|-------------------------|-----|------------------|------|--------------------------|-------|-------------------------|-------|--------------------------------------|-----|--------------------------------------|-----|
| | | WITHOUT GATES | | WITH OS&Y GATES (GXF) | | WITH OS&Y GATES(GXG) | | WITH BUTTERFLY VALVES (GXG) | | WITH BUTTERFLY VALVES (GXF) | |
| in. | mm | lbs. | kg | lbs. | kg | lbs. | kg | lbs. | kg | lbs. | kg |
| 2 1/2 | 65 | 112 | 50.8 | 214 | 97 | 206 | 93.5 | 154 | 70 | 164 | 74 |
| 3 | 80 | 111 | 50 | 231 | 104.8 | 221 | 100.3 | 156 | 71 | 169 | 77 |
| 4 | 100 | 98 | 45 | 252 | 114 | 226 | 103 | 146 | 66 | 168 | 76 |
| 6 | 150 | 151 | 69 | 387 | 176 | 357 | 162 | 225 | 102 | 255 | 116 |
| 8 | 200 | 321 | 146 | 797 | 362 | 773 | 351 | 465 | 211 | 511 | 232 |
| 10 | 250 | 374 | 170 | 1059 | 480 | 937 | 425 | 590 | 268 | 648 | 294 |

| MODEL 375ADA SIZE | DIMENSION (approximate) | | | | | | | | | | | | | | | | | | | | |
|-------------------------|-------------------------|--------|-------------------------------|--------|--------------------------|--------|-----|-------|-----|--------|----------------|--------|---------------------|--------|-------------------------------|--------|-----|--------|-----|---------|-----|
| | A | | A WITH BUTTERFLY VALVES | | B LESS GATE VALVES | | C | | D | | E OS&Y OPEN | | E OS&Y CLOSED | | E WITH BUTTERFLY VALVES | | F | | H | | |
| | in. | mm | in. | mm | in. | mm | in. | mm | in. | mm | in. | mm | in. | mm | in. | mm | in. | mm | in. | mm | |
| 2 1/2 | 65 | 35 1/8 | 892 | 32 1/8 | 816 | 20 1/8 | 511 | 4 1/2 | 114 | 9 | 229 | 16 3/8 | 416 | 13 7/8 | 352 | 8 1/4 | 210 | 11 | 279 | 9 5/8 | 247 |
| 3 | 80 | 36 1/8 | 918 | 33 | 838 | 20 1/8 | 511 | 4 1/2 | 114 | 9 | 229 | 18 7/8 | 479 | 15 5/8 | 397 | 8 1/2 | 216 | 11 | 279 | 9 5/8 | 247 |
| 4 | 100 | 38 1/4 | 972 | 33 1/4 | 845 | 19 7/8 | 505 | 4 1/2 | 114 | 9 | 229 | 22 3/4 | 578 | 18 1/4 | 464 | 9 | 229 | 11 | 279 | 9 5/8 | 247 |
| 6 | 150 | 47 1/4 | 1200 | 40 1/4 | 1022 | 25 7/8 | 657 | 5 1/2 | 140 | 10 1/2 | 267 | 30 1/8 | 765 | 23 3/4 | 603 | 10 1/4 | 260 | 12 3/8 | 314 | 13 | 330 |
| 8 | 200 | 62 | 1575 | 55 | 1397 | 38 1/2 | 978 | 10 | 254 | 12 | 305 | 37 3/4 | 959 | 29 1/4 | 743 | 12 | 305 | 15 3/8 | 391 | 17 5/16 | 440 |
| 10 | 250 | 64 5/8 | 1642 | 59 | 1499 | 38 1/2 | 978 | 10 | 254 | 12 | 305 | 45 3/4 | 1162 | 35 3/8 | 899 | 13 | 330 | 15 3/8 | 391 | 17 1/8 | 435 |

Zurn Industries, LLC | Wilkins
1747 Commerce Way, Paso Robles, CA U.S.A. 93446 Ph. 855-663-9876, Fax 805-238-5766

In Canada | Zurn Industries Limited
3544 Nashua Drive, Mississauga, Ontario L4V 1L2 Ph. 905-405-8272, Fax 905-405-1292

www.zurn.com



Options

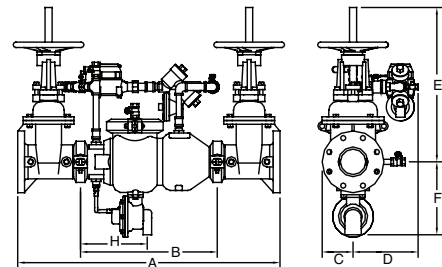
(Suffixes can be combined)

- ☐ - with OS & Y gate valves (standard)
- ☐ L - less shut-off valves (grooved body connections)
- ☐ LM - less water meter
- ☐ - with remote reading meter
- ☐ - with gallon meter (standard)
- ☐ - with cu ft/min meter
- ☐ G - with groove end gate valves
- ☐ FG - with flanged inlet gate connection and grooved outlet gate connection
- ☐ MS - with Integral Relief Valve Monitor Switch
- ☐ BG - with grooved end butterfly valves with integral supervisory switches
- ☐ BF - with flanged end butterfly valves with integral supervisory switches
- ☐ PI - with Post Indicator Gate Valve
- ☐ -509 - with AWWA C509 gate valves

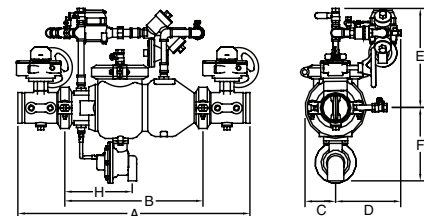
Accessories

- ☐ Air gap (Model AG)
- ☐ Repair kit (rubber only)
- ☐ Thermal expansion tank (Model XT)
- ☐ OS & Y Gate valve tamper switch (OSY-40)
- ☐ QT-SET Quick Test Fitting Set

MODEL
375ADA with
standard OS&Y



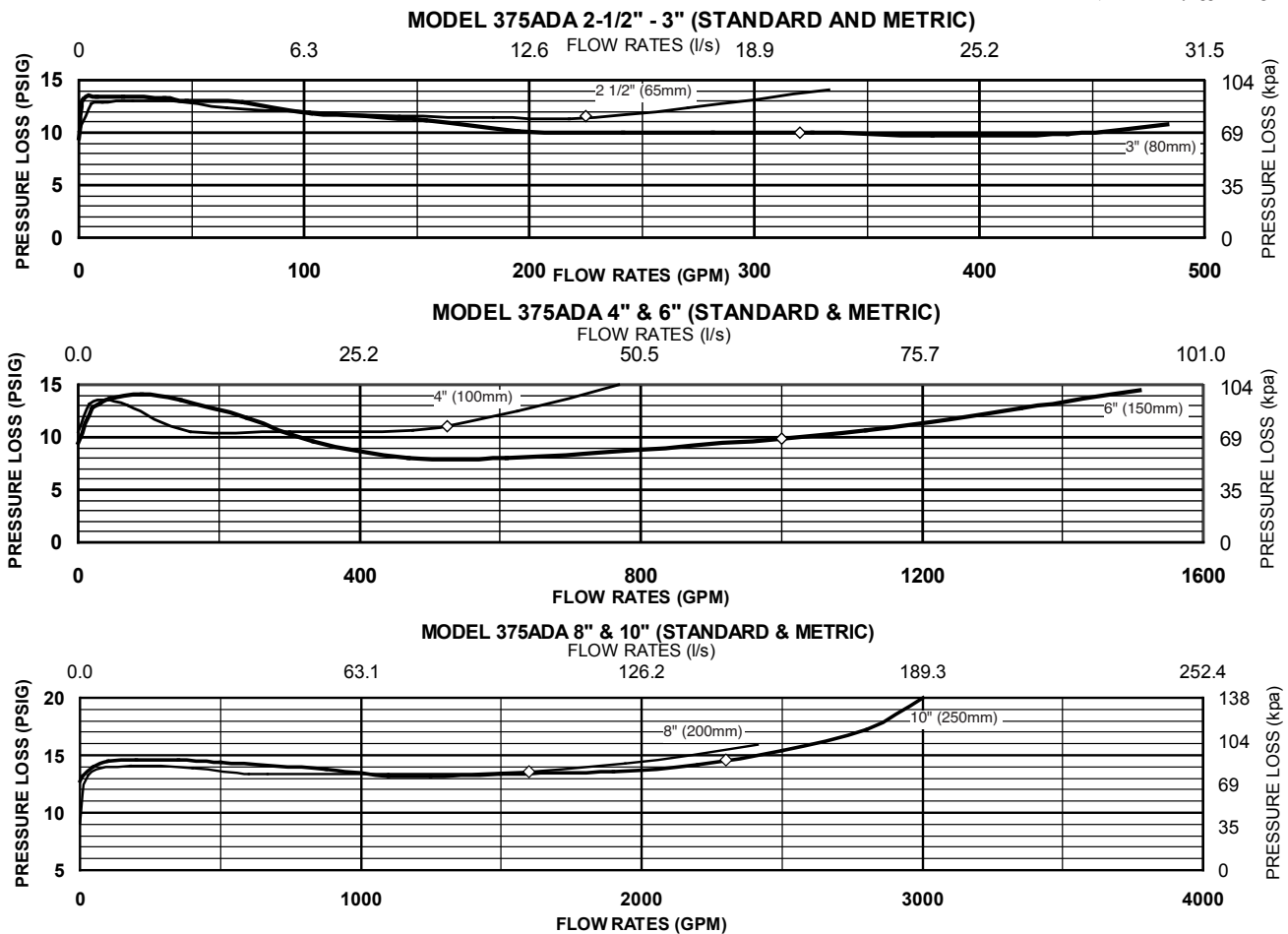
MODEL
375ADA with
BG option



Attention: Model 375ADA (grooved body) and Model 375DA (flange body) have different lay lengths.

Relief Valve
discharge port:
2 1/2" - 6" - 2.75 sq. in.
8" - 10" - 3.69 sq. in.

Rev. H
Date: 4/17
Document No. BF-375ADA
Patent No. 5, 913, 331
Product No. Model 375ADA

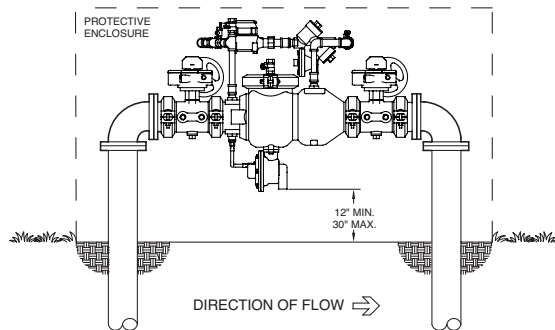


Typical Installation

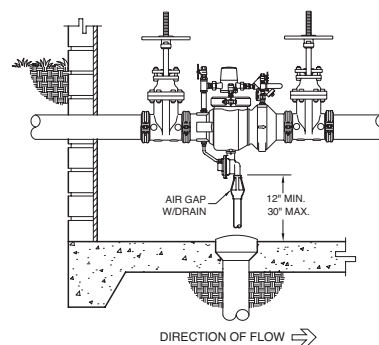
Local codes shall govern installation requirements. To be installed in accordance with the manufacturer's instructions and the latest edition of the Uniform Plumbing Code. Unless otherwise specified, the assembly shall be mounted at a minimum of 12" (305mm) and a maximum of 30" (762mm) above adequate drains with sufficient side clearance for testing and maintenance. The installation shall be made so that no part of the unit can be submerged.

Capacity thru Schedule 40 Pipe (GPM)

| Pipe size | 5 ft/sec | 7.5 ft/sec | 10 ft/sec | 15 ft/sec |
|-----------|----------|------------|-----------|-----------|
| 2 1/2" | 75 | 112 | 149 | 224 |
| 3" | 115 | 173 | 230 | 346 |
| 4" | 198 | 298 | 397 | 595 |
| 6" | 450 | 675 | 900 | 1351 |
| 8" | 780 | 1169 | 1559 | 2339 |
| 10" | 1229 | 1843 | 2458 | 3687 |
| 12" | 1763 | 2644 | 3525 | 5288 |



OUTDOOR INSTALLATION (MODEL 375ADA with BG option)



INDOOR INSTALLATION (MODEL 375ADA with G option)

Specifications

The Reduced Pressure Detector Backflow Prevention Assembly shall be certified to NSF/ANSI 61, ASSE® Listed 1047, and supplied with full port OS & Y gate valves. The main body and access cover shall be epoxy coated ductile iron (ASTM A 536), the seat ring and check valve shall be NORYL™, the stem shall be stainless steel (ASTM A 276) and the seat disc elastomers shall be EPDM. The checks and the relief valve shall be accessible for maintenance without removing the device from the line. The Reduced Pressure Detector Backflow Prevention Assembly shall be a ZURN WILKINS Model 375ADA.

