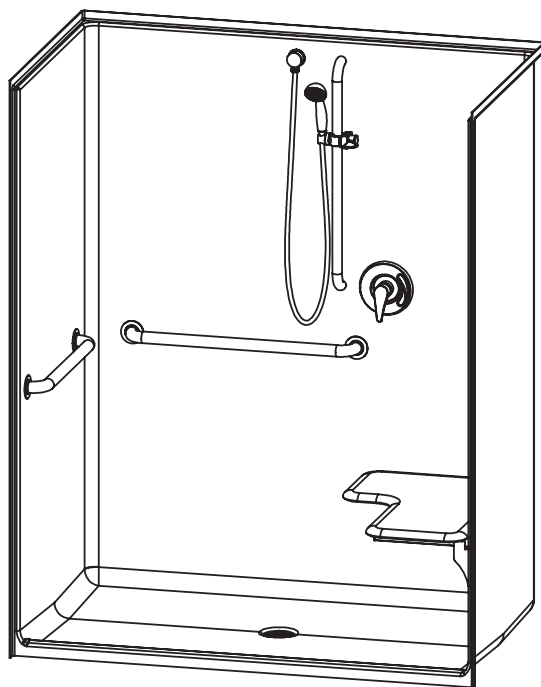


1603CFS – ACCESSIBLE SHOWERS

inches

Interior: 60 x 34 x 74 $\frac{5}{16}$

Exterior: 62 x 36 $\frac{1}{4}$ x 77 $\frac{5}{16}$



AQUATIC ADVANTAGE

- National distribution
- 6 manufacturing facilities
- Private fleet
- Centralized customer service
- Field support

COLOR & TRIM OPTIONS

| Stock | Upgraded |
|-------|---------------------------|
| White | Almond Biscuit Bone |

**Additional custom colors available.
(Contact Customer Service)

FEATURES

- AcrylX™ applied acrylic surface
- 1 $\frac{3}{4}$ " skirt
- 1 $\frac{1}{2}$ " interior threshold
- Barrier free when properly installed
- Smooth wall
- Center drain
- Lifetime limited warranty (30 year commercial)

OPTIONS

- Grab bars
- Fold-up seat
- Hand-held shower assembly with slide bar
- Pressure balancing mixing valve
- Soap dish
- Curtain rod and/or shower curtain
- Dome light

CODE COMPLIANCE

- ADA
- FHA
- ICC/ANSI A117.1
- IAPMO Z124-2011
- HUD UM73a
- CAN/CSA-B651-04
- CSA-B45-11

**Code compliant when fully equipped and installed according to guidelines.



Aquatic products may be
specified as Lasco Bathware.

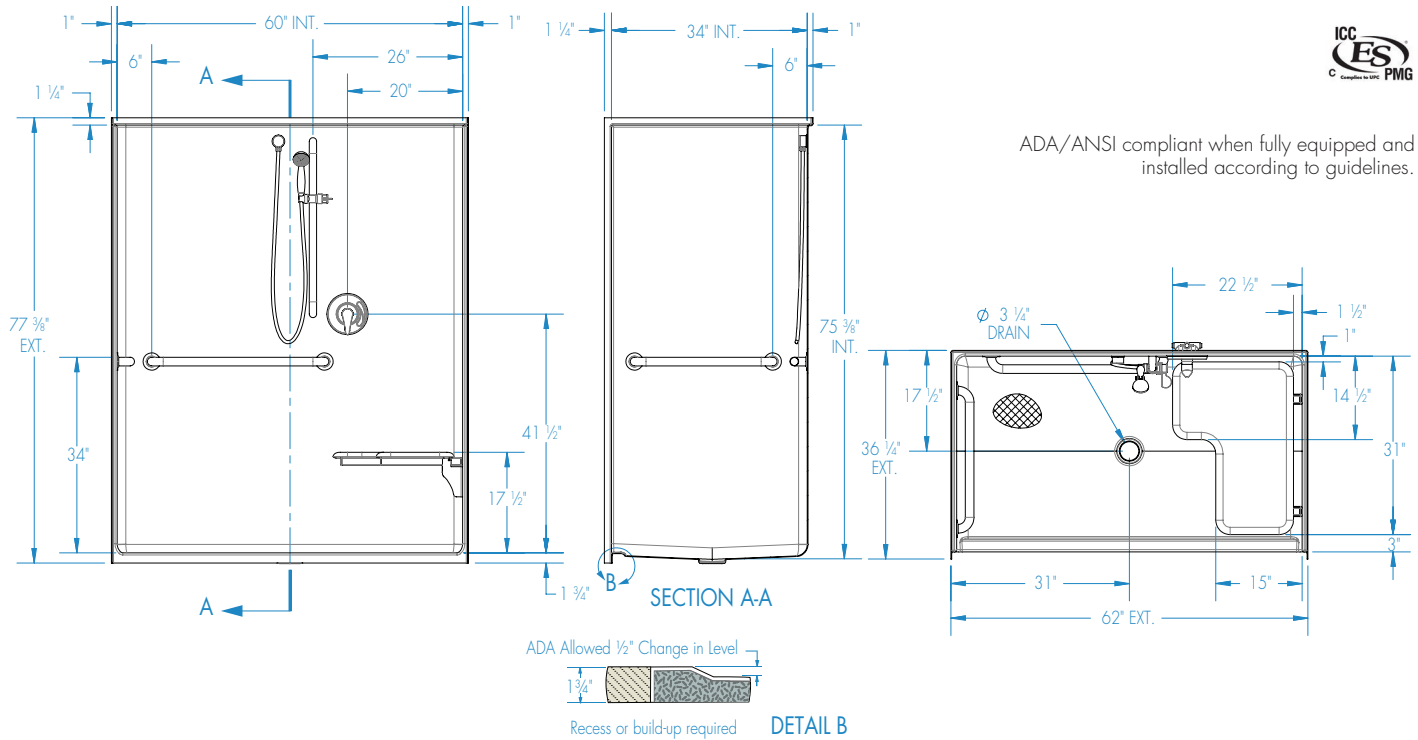


1603CFS

Interior: 60 x 34 x 74 ⁵/₁₆
Exterior: 62 x 36 ¹/₄ x 77 ⁵/₁₆
inches



ADA/ANSI compliant when fully equipped and installed according to guidelines.



FEATURES

Dimensional Tolerance $\pm \frac{3}{8}$ ". Dimensions needed for site preparation should be measured from the unit. Aquatic assumes no responsibility for preparatory work.

| Type and Model # | Material | Wall Finish | Pieces | Drain | Dam/Skirt Height | Net Wt. lbs | Pkg. Wt. lbs |
|------------------|----------|-------------|--------|--------|---|-------------|--------------|
| Shower #1603CFS | AcrylX™ | Smooth | 1 | Center | 1 ³ / ₄ " skirt, ¹ / ₂ " interior threshold | 165 | 175 |

DIMENSIONS

| Specifications | inches |
|---------------------------------|---|
| Width: Overall / Net | 62 / 60 |
| Depth: Overall / Net | 36 ¹ / ₄ / 34 |
| Height: Overall / Net | 77 ⁵ / ₁₆ / 74 ⁵ / ₁₆ |
| Enclosure Opening: | 60 |
| Skirt Height: | 1 ³ / ₄ |
| Drain Rough-In (from Back Wall) | 17 ¹ / ₂ |
| Drain Rough-In (from Side Wall) | 31 |

FRAMING DIMENSIONS inches

| Type | D Depth | W Width | H Height | A | B | C |
|--------|--------------------------------|--------------------------------|----------|---------|----|--------------------------------|
| Alcove | 36 ¹ / ₄ | 62 ¹ / ₈ | — | Box Out | 31 | 17 ¹ / ₂ |

