



Z5617-BWL

TAG _____

HET Concealed, Wall Hung Ecovantage® Flush Valve Toilet System with Antimicrobial Glaze



Z5617-BWL Series

Suffix Options:

- ☐ **-RF** Retro-Fit Nut Kit for extending carrier studs from existing wall.

Recommended Trim:

- ☐ **Z5955SS-EL** Elongated, standard white, open front toilet seat less cover with stainless steel check hinge.

Note: To ensure system performance:
Minimum Running Water Pressure = 30 psi.

Fixture dimensions meet ANSI/ASME standard A112.19.2 and CAN/CSA B45 requirements.

Meets the American Disabilities Guidelines and ANSI A117.1 requirements when installed according to these requirements.



ZURN INDUSTRIES, LLC. ♦ COMMERCIAL BRASS OPERATION
5900 ELWIN BUCHANAN DRIVE ♦ SANFORD NC 27330
PHONE: 1-800-997-3876 ♦ FAX: 919-775-3541
WWW.ZURN.COM

IN CANADA: ZURN INDUSTRIES LIMITED
7900 GOREWAY DRIVE UNIT 10 ♦ BRAMPTON, ONTARIO L6T5W6
PHONE: 905-405-8272 FAX: 905-405-1292

Z5617 HET Series

- Zurn High Efficiency Toilets and paired performance flush valve systems are designed to exceed industry standards, while using as little as 1.1 gallons of water per flush.
- Universal high efficiency toilet can be specified with 1.28 gpf [4.8Lpf], 1.6 gpf [6.0 Lpf] or dual flush valves.
- Vitreous china
- Antimicrobial ceramic glaze utilizing SmartSilver™ nanotechnology to create a permanent surface that inhibits the growth of stain and odor causing mold, mildew and bacteria, thus minimizing the need for cleaning chemicals and water to cleanse the bowl.
- Backspud/Concealed flush valve system
- Elongated front rim
- 2-1/8" fully glazed trapway
- High efficiency siphon jet flush action
- Shipping Weight: 50 lbs.

Engineering Specification:

☐ **Z5617-BWL**

-Vitreous China, 1.1 gpf [4.2 Lpf] or greater high efficiency wall hung toilet with siphon jet flushing action, antimicrobial ceramic glaze and elongated front rim with 1-1/2" back spud connection. Universal high efficiency toilet is designed to exceed industry standards with flush volumes of 1.1 gallons per flush or higher.

***Replaces Zurn Z5620**



*This product should be used with a WaterSense labeled counterpart with a compatible flush volume to ensure that the entire system meets the requirements for water efficiency and performance.

See Zurn One Systems for suggested packages.

Architectural/Engineering Approval

The information contained in this document is subject to change without notice.
Please contact Zurn for most up to date information.



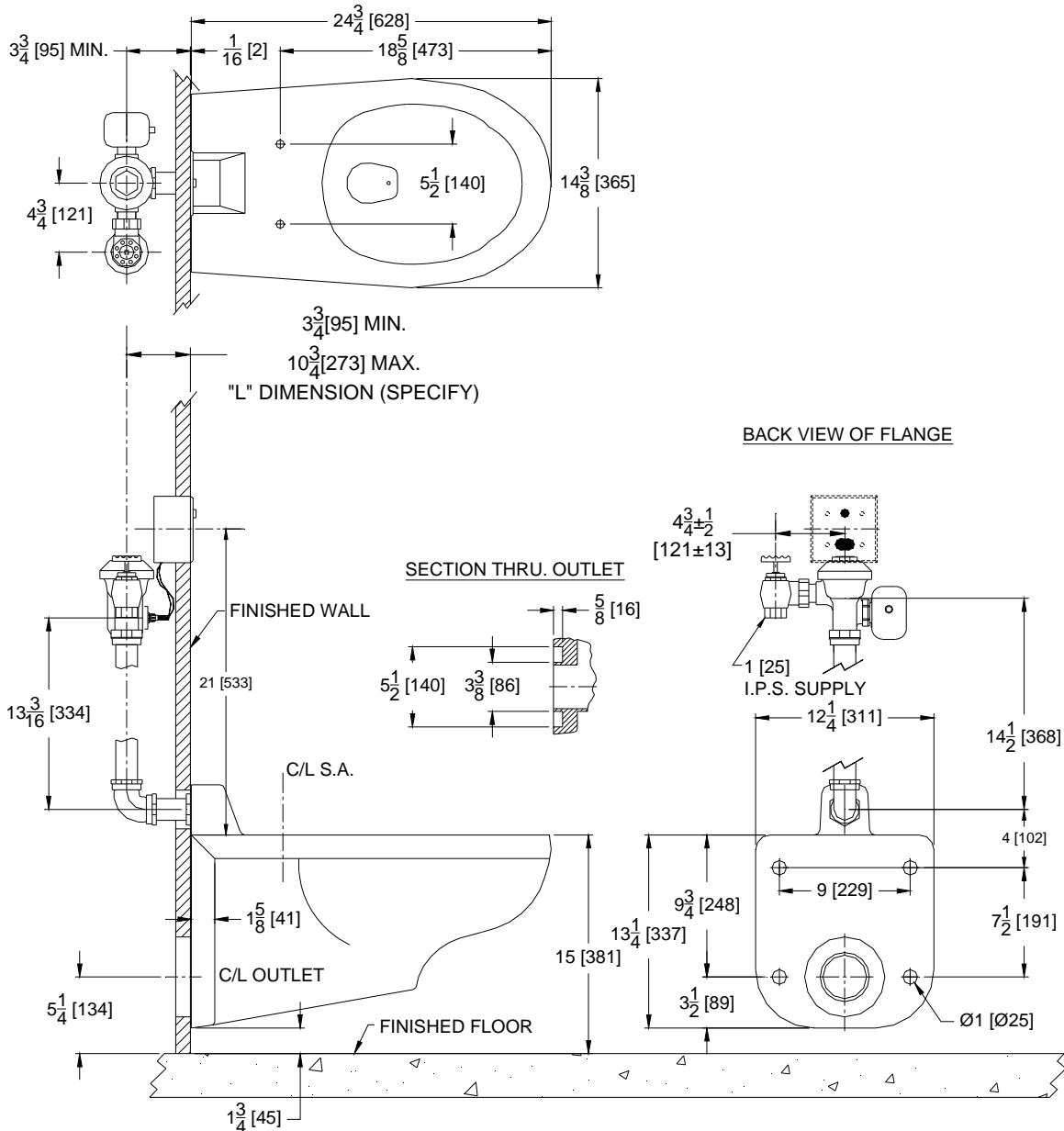
Z5617-BWL

TAG _____

HET Concealed, Wall Hung Ecovantage® Flush Valve Toilet System with Antimicrobial Glaze

Rough-in dimensions for Z5617-BWL

- Z5617 with back spud



These dimensions and specifications are subject to change without notice.

Fixture dimensions meet ANSI/ASME standard A112.19.2 and CAN/CSA B45 requirements.

Note: For ADA compliance, rim height should be installed 17" from finished floor.

ZURN INDUSTRIES, LLC. ♦ COMMERCIAL BRASS OPERATION

5900 ELWIN BUCHANAN DRIVE ♦ SANFORD NC 27330

PHONE: 1-800-997-3876 ♦ FAX: 919-775-3541

WWW.ZURN.COM

IN CANADA: ZURN INDUSTRIES LIMITED

7900 GOREWAY DRIVE UNIT 10 ♦ BRAMPTON, ONTARIO L6T5W6

PHONE: 905-405-8272 FAX: 905-405-1292

Meets the American Disabilities Guidelines and ANSI A117.1 requirements when installed according to these requirements.

