

PCA® Cascade® Faucet Aerator - 0.5 gpm max Pressure Compensating Regular Size



Features and Benefits

- ▶ Watercolours® design: Color coding to identify flow rate and stream pattern.
- ▶ Patented construction provides a splash-free stream, well-aerated and soft to the touch.
- ▶ Unique screenless 100% plastic Cascade® construction hinders lime build up.
- ▶ Pressure compensating for constant flow from 20 to 80 psi.
- ▶ Anti-clogging dome screen filters sediment and particles.
- ▶ Compatible with regular and vandal proof M22 & M24 metric housings.
- ▶ Available housing finishes: chrome, polished brass, brushed nickel and oil rubbed bronze.
- ▶ Laser marked housings with statutory marking.

Certifications

ANSI/NSF®-61-372
ASME A112.18.1M and CSA B125
Meets **CALGreen** requirements

Thread & Part Number

Part #	Designation	Thread Size
31 235	Insert only	
31 200	Regular male	15/16"-27
31 210	Regular female	55/64"-27
31 220	Regular dual thread	15/16"-27 x 55/64"-27
31 204	Vandal proof regular male	15/16"-27
31 214	Vandal proof regular female	55/64"-27
31 226	Vandal proof regular dual thread	15/16"-27 x 55/64"-27

Other product combinations available.

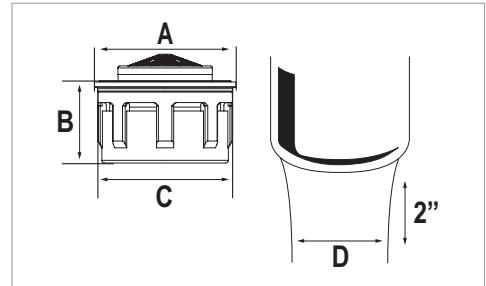
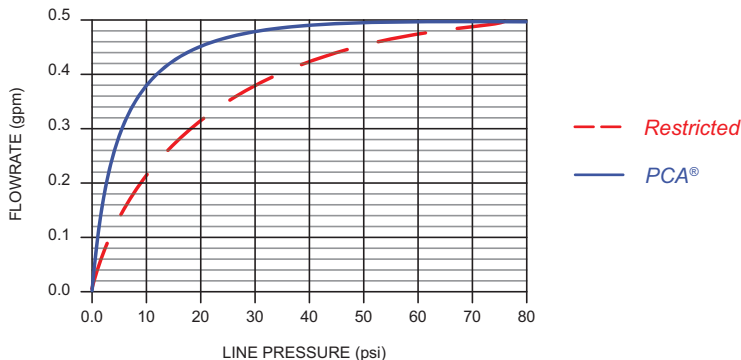
Packaging:

Inserts 1 pc (bag), 6 pcs (tube), 50 pcs (bag)
Reg. male/female/dual thread 1 pc (bag), 6 pcs (tube), 50 pcs (tray)
Reg. vandal proof male/female/dual thread 1 pc (bag), 6 pcs (tube), 40 pcs (tray)

Color Code

Dome	Flow Regulator	Basket
Natural	Lime Green	Dark Gray

Flow Rate Curve



Dimensions

No	mm	In
A	20.88	.822
B	12.00	.472
C	19.97	.786
D	≈ 13	≈ 1/2

Housings

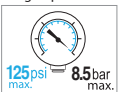
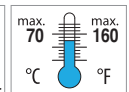
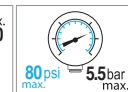
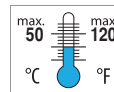


Technical Data

Materials: Body Acetal
O-ring EPDM
Washer EPDM

Continuous

Short-term (5 minutes max.)
Per ASME A112.18.1 testing requirements.



NEOPERL, Inc., Waterbury, CT • Tel: 203-756-8437 • Fax: 203-574-2107 • www.neoperl.com