



IMPORTANT
Installation Instructions

IMPORTANTE
Instrucciones de Instalación

IMPORTANT
Instructions d'Installation

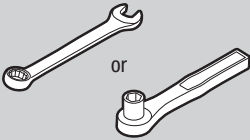
© 2018 1B5990750A

Tools Needed

Herramientas requeridas

Outils requis

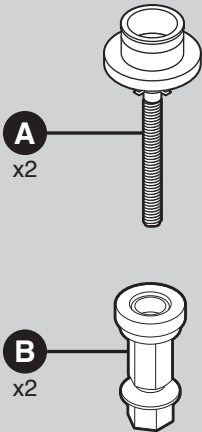
1/2" (13 mm)



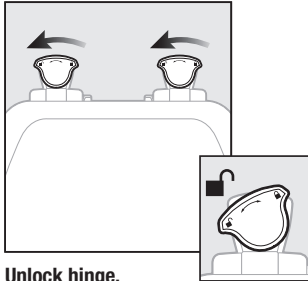
Hardware Kit Includes

El kit de instalación incluye

Le kit de matériel inclut



1

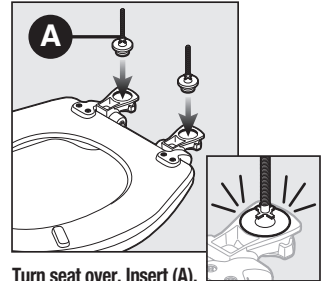


Unlock hinge.

Desbloquear bisagra.

Déverrouiller la charnière.

2

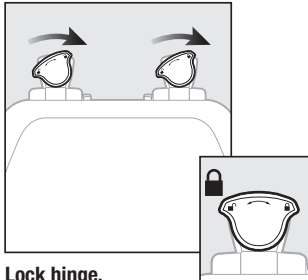


Turn seat over. Insert (A).

Gire el asiento. Inserte (A).

Retourner le siège. Insérer (A).

3

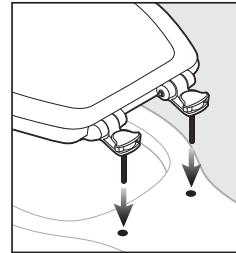


Lock hinge.

Bloquear bisagra.

Verrouiller la charnière.

4

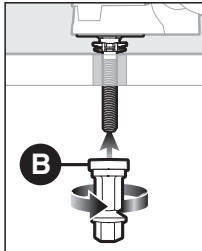


Place seat on bowl.

Colcar el asiento en el sanitario.

Placer le siège sur la cuvette.

5

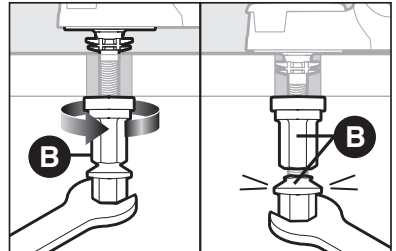


Finger tighten (B) to the under side of the bowl.

Aprieta con los dedos (B) en el lado inferior de la taza.

Serrer à la main (B) au-dessous de la cuvette.

6



Holding seat centered on bowl, tighten (B) until lower portions snap off.

Sosteniendo el asiento centrado en la taza, apriete (B) hasta que las partes inferiores se desprendan.

En maintenant le siège centré sur la cuvette, serrer (B) jusqu'à ce que les portions inférieures cassent.