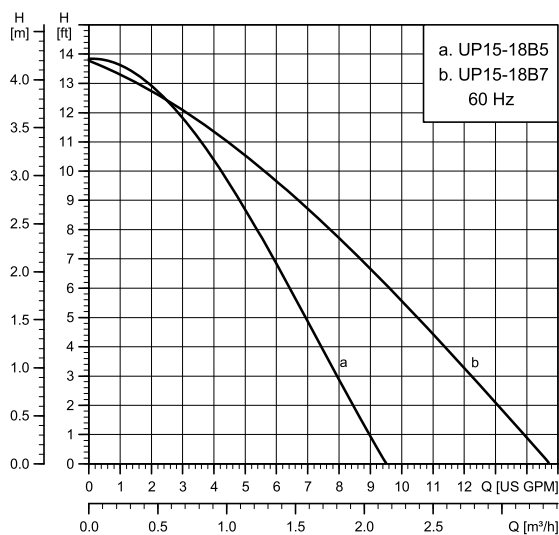


UP 15-18 B5/B7



TM03 8426 4412

Flow range:	0 - 14.7 gpm (0 - 3.3 m ³ /h)
Head range:	0 - 13.9 ft (0 - 4.2 m)
Motor:	2-pole, single-phase
Max. liquid temperature:	230 °F (110 °C)
Min. liquid temperature:	36 °F (2 °C)
Max. system pressure:	145 psi (10 bar)

Note: If the UP pump is equipped with a timer, the maximum liquid temperature is 150 °F (66 °C).

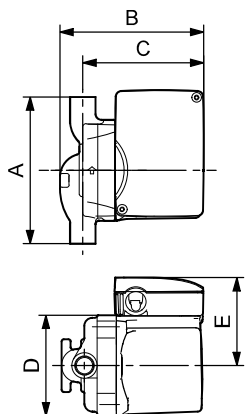
Model	Volts	Amps	Watts	Hp	Capacitor
UP 15-18 B5	115	0.74	86	1/25	10 μF / 180 V
	230	0.4	90	1/25	2 μF / 400 V
UP 15-18 B7	115	0.74	86	1/25	10 μF / 180 V
	230	0.4	96	1/25	2 μF / 400 V

Approvals



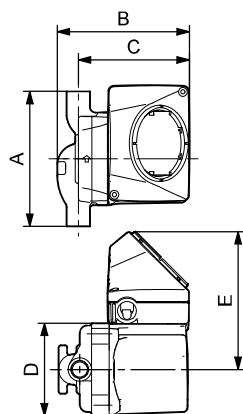
Drinking Water System Components
In Accordance with NSF/ANSI 372

UP 15-18 B5/LC



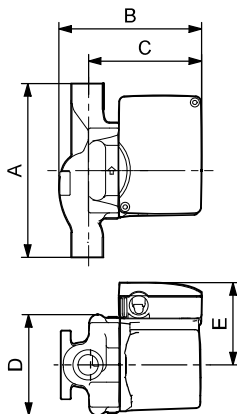
TM03 8545 1907

UP 15-18 B5/TLC



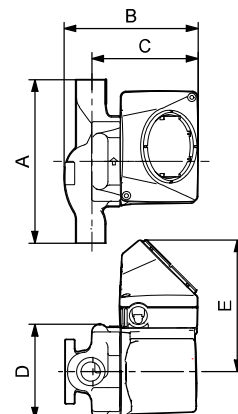
TM03 8546 1907

UP 15-18 B7/LC



TM03 8547 1907

UP 15-18 B7/TLC



TM03 8548 1907

Model	Product number		Dimensions [inches (mm)]					Connection type and size	Shipping weight [lbs (kg)]
	115 V	230 V	A	B	C	D	E		
UP 15-18 B5	59896114	59896118	5.31 (135)	5.00 (127)	4.13 (105)	3.50 (89)	2.85 (72)	1/2" sweat	6.0 (2.7)
UP 15-18 B5/LC	59896211	-	5.31 (135)	5.00 (127)	4.13 (105)	3.50 (89)	2.85 (72)	1/2" sweat	6.5 (2.9)
UP 15-18 B5/TLC	59896212	-	5.31 (135)	5.00 (127)	4.13 (105)	3.50 (89)	5.33 (135)	1/2" sweat	6.5 (2.9)
UP 15-18 B7	59896121	59896119	6.70 (170)	5.25 (133)	4.13 (105)	3.50 (89)	2.85 (72)	3/4" sweat	6.7 (3.0)
UP 15-18 B7/LC	59896229	-	6.70 (170)	5.25 (133)	4.13 (105)	3.50 (89)	2.85 (72)	3/4" sweat	7.2 (3.3)
UP 15-18 B7/TLC	59896230	-	6.70 (170)	5.25 (133)	4.13 (105)	3.50 (89)	5.33 (135)	3/4" sweat	7.2 (3.3)

Note: LC/TLC models have a 6 ft (1.8 m), 3-prong power cord.
Dimensions in inches unless otherwise stated.