

# Williamson

---

# CHB

Series 2

## Ratings - 2 sizes

91,000 to 119,000 Btuh Input

0.65 to 1.25 GPH #2 Fuel Oil



## Centennial High Boy Oil Furnace

- ▣ AFUE's to 85.9%
- ▣ Heat exchanger
  - Heaviest in the industry
  - Front flue with top or right side venting option
  - Interior baffling for maximum efficiency
  - Dual spring-loaded clean-out ports for easy service and maintenance
  - Spring-loaded observation port with test port
  - Heavy gauge burner mounting plate with studs and nuts
- ▣ Blower
  - Belt drive or multi-speed direct drive
  - Slide-out blower/motor – easily removed for service
- ▣ Cabinet
  - Appliance finish Powder coat paint
  - Heavy gauge "Seal-Tite" construction
  - Foil-faced insulation for hand-cool surface
  - Fully-enclosed burner and controls
- ▣ Combustion Chamber
  - Preformed slide-out chamber for easy service
- ▣ Burner and controls
  - Factory-wired with simple plug-in connections
  - PSC motor
  - Solid state ignitor



## Williamson

Since 1890

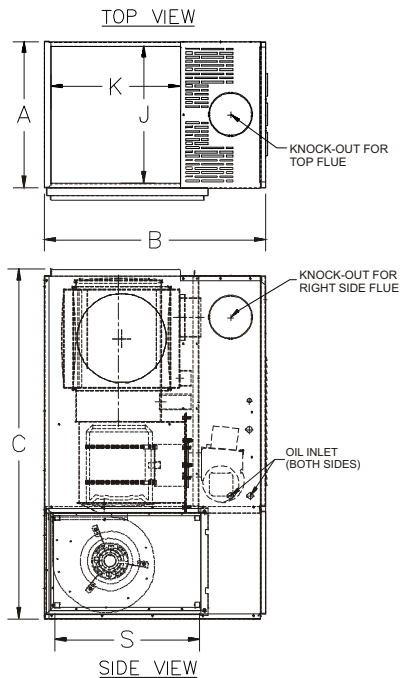
# RATINGS

Model	Input	Output	Firing rate	Installed nozzle	AFUE with electric damper	AFUE without electric damper	Blower size	Blower motor hp	Blower pulley	Motor pulley	Belt size	Maximum cooling capacity (tons)	Ship wt. (pounds)	Blower CFM	
	(Btuh)	(Btuh)	(GPH)												@ 0.25" WC
<b>Direct-drive units</b>															
CHB-105	91,000	79,100	0.65		85.9	83.3	GT10-10	1/2	-	-	-	3 1/2	265	1050	1025
	105,000	89,400	0.75	✓	85.4	82.8	GT10-10	1/2	-	-	-	3 1/2	265	1175	1100
	119,000	101,100	0.85		85.0	82.4	GT10-10	1/2	-	-	-	3 1/2	265	1425	1300
CHB-140	140,000	120,000	1.00	✓	85.0	82.4	GT12-10	3/4	-	-	-	5	315	1600	1575
	175,000	148,500	1.25		84.2	81.6	GT12-10	3/4	-	-	-	5	315	1925	1800
<b>Belt-drive units</b>															
CHB-105	91,000	79,100	0.65		85.9	83.3	GT10-10	1/2	4-15/16	3-1/8 variable	34.3	2 1/2	265	1200	975
	105,000	89,400	0.75	✓	85.4	82.8	GT10-10	1/2	4-15/16	3-1/8 variable	34.3	2 1/2	265	1275	1100
	119,000	101,110	0.85		85.0	82.4	GT10-10	1/2	4-15/16	3-1/8 variable	34.3	2 1/2	265	1275	1100
CHB-140	140,000	120,000	1.00	✓	85.0	82.4	GT12-10	1/2	7 x 3/4	3 1/4 x 1/2	44	3	315	1600	1400
	175,000	148,500	1.25		84.2	81.6	GT12-10	1/2	7 x 3/4	3 1/4 x 1/2	44	nr	315	1600	nr

**NOTE: Filter sizes required are: CHB-105 - (1) 12" x 24" • CHB-140 - (1) 12" x 25" • nr = not recommended**

# DIMENSIONS

ALL DIMENSIONS IN INCHES



Model	Furnace casing			Warm air supply (top)		Return air (side)		Flue pipe diam.
	Width A	Depth B	Height C	Width J	Depth K	Width R	Depth S	
<b>CHB-105</b>	22 1/4	33-3/4	53 1/2	21	20	15	22	6
<b>CHB-140</b>	25 1/4	37 1/4	58-3/4	24	23 1/4	16	28	7

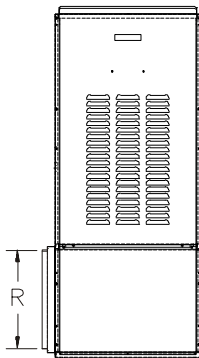
**Note:** CHB furnaces are approved for "0" clearance to combustible construction. Refer to installation manual for details and proper installation.

# EQUIPMENT

- Factory-assembled
- Hot-rolled steel heat exchanger, pressure tested to assure leak-tight construction
- 10-gauge primary heat exchanger
- 14-gauge secondary heat exchanger
- Rugged 20-gauge cabinet with powder coat finish
- Air conditioning fan center standard on all direct-drive models
- Electrical box with external low-voltage terminal strip
- Limit control with continuous fan on selector switch
- Leveling legs
- External filter rack provided
- Barometric damper provided
- High-efficiency flame retention burner (Beckett, Carlin, Riello)
- Optional two-stage fuel unit

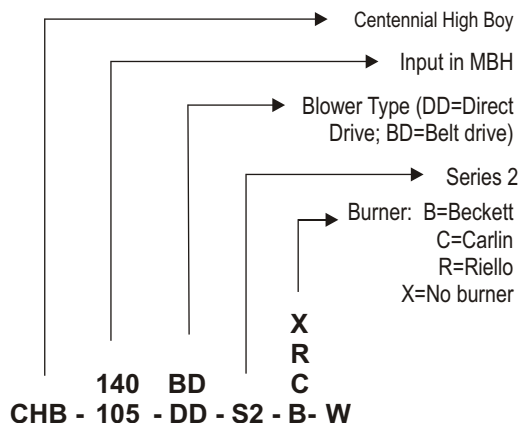
# ORDER CODE

# WARRANTY



FRONT VIEW

**Note 1:** Attach an external filter rack after cutting opening in side for return air duct connection. Either side can be used.



**140 BD**  
**CHB - 105 - DD - S2 - B - W**

- Limited lifetime warranty on heat exchanger
- 5-year limited warranty on parts
- Optional 5- or 10-year parts and labor warranty



**Williamson**

8201 West Calumet Road • Milwaukee, WI 53223

[www.williamson-thermoflo.com](http://www.williamson-thermoflo.com)

Form No. W-101R1(0903)

