

40-SERIES OIL BURNERS

Balanced-Flue

RIELLO
B
BURNERS



The RIELLO 40-Series balanced-flue oil burner has been specifically designed to meet the increasing trend towards direct connection to outside air for combustion. Incorporating the field-proven RIELLO 40-Series chassis with a sealed cast aluminum cover, the balanced-flue oil burner is the quietest burner on the market.

Each burner is thoroughly tested to ensure the highest level of quality and performance.

Available in two models, the RIELLO 40 balanced-flue oil burner series can produce heat outputs ranging from 70,000 to 231,000 Btuh.

SPECIFICATIONS

MODEL

BF3

BF5

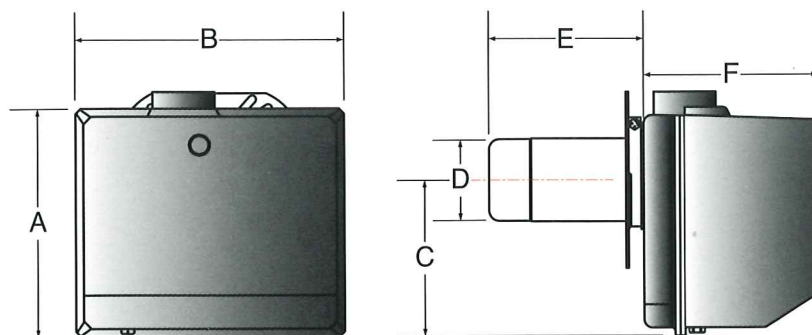
GPH	0.50 - 0.95	0.75 - 1.65
Firing Rates	70 - 133	105 - 231
Btuh x 1,000	20 - 39	30 - 67
kW/hr	No heavier than Number 2 (Optional pump required for kerosene)	
Usable Heating Oil	120v 60Hz	
Power Supply	1.6amp	1.7amp
Motor Load (Rated)	3250	
Motor rpm (Rated)	120 - 200psi	
Pump Pressure Range	155W	175W
Power Consumption		

DIMENSIONS

Inches (Millimeters)

A	9 ¹³ / ₁₆ " (249mm)	9 ¹³ / ₁₆ " (249mm)
B	11 ¹ / ₄ " (286mm)	11 ¹ / ₂ " (292mm)
C	7 ¹ / ₂ " (193mm)	7 ¹ / ₂ " (193mm)
D	3 ¹ / ₂ " (89mm)	3 ¹ / ₂ " (89mm)
E	5 ¹ / ₂ " (140mm)	5 ¹ / ₂ " (140mm)
F	8" (203mm)	8" (203mm)
VSBT	12" (305mm)	12" (305mm)
SBT	Other combustion head lengths are available upon request	
LBT	6 ⁷ / ₈ " (175mm)	7 ¹ / ₁₆ " (189mm)
OEM (Custom)		

*Usable tube length will be reduced by as much as 1¹/₈" depending on flange selected.



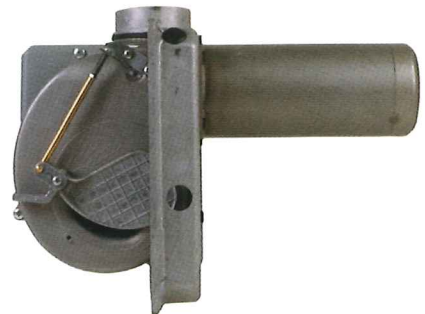
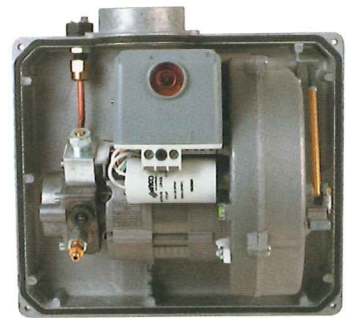
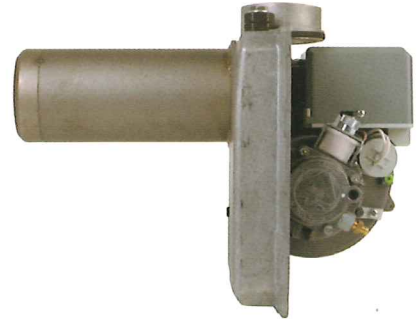
40-SERIES OIL BURNERS

Balanced-Flue

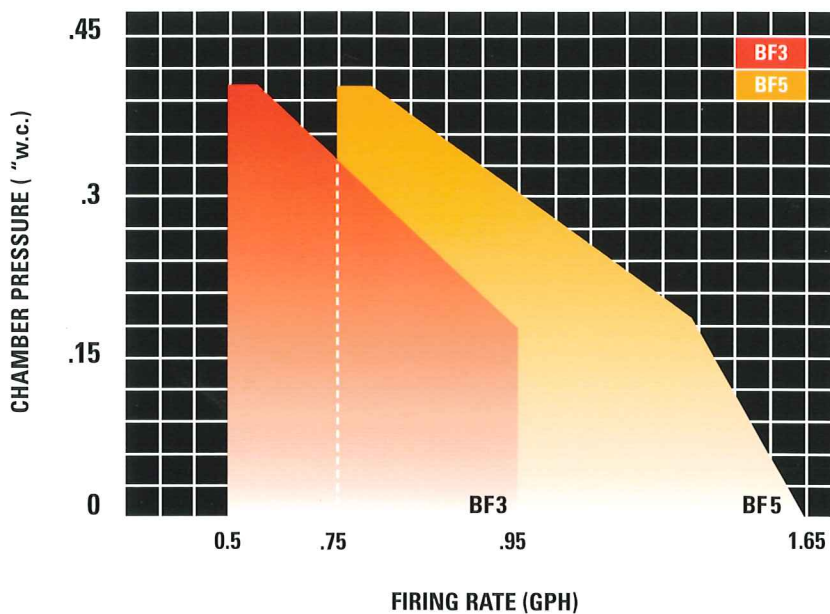
ADVANCED BURNER TECHNOLOGY



- Durable, lightweight, compact construction
 - Factory pre-wired
 - Sealed cast aluminum cover
 - Removable cover plug for final combustion air adjustment
 - Motor direct driven pump (no coupling) with integrated solenoid valve
 - Permanent split capacitor (PSC) motor with automatic reset for thermal overload
 - High static pressure combustion head
 - Integrated electronic control box with interrupted ignition and other advanced features
 - Outside air intake port
- Easy to install and service
 - Simple, precise combustion adjustments
 - Low power consumption
 - Quiet operation
 - High efficiency (for fuel savings)
 - Low maintenance



OPERATING RANGES





Riello Burners – a world of experience in every burner we sell

Across North America and the world over, Riello sets the standard in reliable, high-efficiency, low-maintenance burner technology. With burner capacities from 38 thousand to more than 70 million Btuh, Riello oil, gas and dual-fuel burners deliver unbeatable performance across the full range of residential and commercial heating applications, as well as in light industrial processes.

Quality engineered for reliability, combined with fuel and power efficiency, Riello burners are environmentally friendly, and easy to install and service – all hallmarks of Riello's advanced burner technology.

With headquarters in Legnago, Italy, Riello has been manufacturing premium quality burners for over 80 years. Today, to meet its customers' needs, Riello employs more than 2,000 people across four continents, with a sales and support network that spans over 60 countries.

Throughout the United States and Canada, our staff and independent sales and support network are dedicated to providing applications engineering support, commissioning, hands-on training, ongoing technical assistance, and after-sales service.

Riello Burners – delivering reliable combustion solutions for our customers in North America and around the world.



Reliable Combustion Solutions

35 Pond Park Road
Hingham, Massachusetts
U.S.A. 02043

1-800-4-RIELLO
1-800-474-3556
www.riello-burners.com

2165 Meadowpine Blvd
Mississauga, Ontario
Canada L5N 6H6