



RGEDZ090-120

Parts List
29-January-2019

Form No. 92-42801-RGEDZ090-120

*This parts list is current as of the above revision date.
See <http://www.rheempartslists.net/92-42801-RGEDZ090-120.pdf> for the current revision.*

Package Gas-Electric - Commercial

Table of Contents

Model Explanation.....	Page 3
Parts Numbers	
Panels - Miscellaneous 090-120 (1).....	Page 4
Panels - Miscellaneous 090-120 (2).....	Page 5
Electrical Group 090-120 (1).....	Page 6
Electrical Group 090-120 (2).....	Page 7
Electrical Group 090-120 (3).....	Page 8
Fan Group 090-120.....	Page 9
Blower Group 090-120 (1).....	Page 10
Blower Group 090-120 (2).....	Page 11
Blower Group 090-120 (3).....	Page 12
Blower Group 090-120 (4).....	Page 13
Coil Parts 090-120.....	Page 14
Compressor Group 090-120 (1).....	Page 15
Compressor Group 090-120 (2).....	Page 16
Heat Exchanger-Burner Group 090-120.....	Page 17
Gas Controls.....	Page 18
Accessories 090-120.....	Page 19
Drawings/Photographs	
Base Assembly.....	Page 20
Rear Post, Bulkhead.....	Page 21
Burner Shroud, IDB.....	Page 22
Filter Rack Assembly.....	Page 23
Heat Exchanger Assembly.....	Page 24
Corner Panels.....	Page 25
TXV, LPC, HPC.....	Page 26
Drain-Pan, Sensor.....	Page 27
New Style Drain Sensor.....	Page 28
Top Panel, Grille.....	Page 29
Access Panels - Front, Right.....	Page 30
Hinged Blower Panel.....	Page 30
Hinged Compressor Panel.....	Page 31
Access Panels -Back.....	Page 32
Hinged Coil-Filter Panel.....	Page 33
Control Box (1).....	Page 34
Control Box (2).....	Page 34
Control Box DDC VFD.....	Page 35
Pressure Switch, Low Voltage Shield.....	Page 36
Blower Assembly.....	Page 37
Burner Assembly.....	Page 38
Filter Drier - HPC.....	Page 39
Blower Support Wrap.....	Page 40
VFD Mounting.....	Page 41
Reheat.....	Page 42
Reheat Coil.....	Page 43
Notes.....	Page 44

MODEL NUMBER EXPLANATION

R	G	E	D	Z	R	0	9	0	A	C	A	1	5	2	A	A	*
1	2	3	4	5	6	7	8	9	10	11	12	13					

- | | |
|---|---|
| <p>1 BRAND
R = Rheem, Ruud, Weatherking, Sure, Mainline</p> <p>2 UNIT TYPE
GE = Package Gas Electric</p> <p>3 CABINET TYPE
D = Small Commercial</p> <p>4 SERIES
ZR = No VFD (Tier 3, Classic)
ZS = Clear Control (Tier 2, Classic Plus)
ZT = VFD (Tier 1, Prestige)</p> <p>5 COOLING CAPACITY (BTU/HR)
090 = 90,000
102 = 102,000
120 = 120,000
150 = 150,000</p> <p>6 MAJOR DESIGN VARIATIONS
A = First Design</p> <p>7 ELECTRICAL DESIGNATION
C = 208-230/3/60
D = 460/3/50
N = 380-415/3/50
V = 380/3/60
Y = 575/3/60</p> <p>8 DRIVE PACKAGE
A = Belt, Low Static
B = Belt, Medium Static
C = Belt, High Static
F = Belt, VFD Low Static
G = Belt, VFD Medium Static
H = Belt, VFD High Static</p> | <p>9 HEATING CAPACITY (MBH)
15 = 150,000
20 = 205,000
22 = 225,000</p> <p>10 HEAT CONFIGURATION (Stage)
2 = Two Stage
B = Two Stage Stainless</p> <p>11 CONTROL
A = Non-Communicating (Non-DDC)
B = Comfort Alert/Phase Monitor (Non-DDC)
C = Clear Control (DDC)
D = Clear Control/Comfort Alert (DDC)</p> <p>12 MINOR SERIES
A = First Design</p> <p>13 OPTION CODES
* = _ _ _ _</p> |
|---|---|

SERIAL NUMBER EXPLANATION

F	4	8	1	7	9	9	9	9
(1)	(2)	(3)	(4)					

- (1) PLANT CODE
- (2) WEEK (DATE CODE)
- (3) YEAR
- (4) PRODUCTION NUMBER

**Note: For Compressor Identification Number, see Compressor Code on Rating Plate
For Gas Code, see Control System Gas Code on Rating Plate**

No.	Notes	MODEL TECHNICAL VARIATION COOLING CAPACITY/MAJOR SERIES	RGED ZR/ZS/ZT 090A	RGED ZR/ZS/ZT 102A	RGED ZR/ZS/ZT 120A
PANELS - RAILS, BASE PANS, INSIDE CABINET					
BASE RAILS:					
A		Base Rail - Front	AE-106001-01	AE-106001-01	AE-106001-01
B		Base Rail - Right	AE-106001-04	AE-106001-04	AE-106001-04
C		Base Rail - Rear	AE-106001-02	AE-106001-02	AE-106001-02
D		Base Rail - Left	AE-106001-03	AE-106001-03	AE-106001-03
BASE PANS:					
E		Outdoor Coil Base Pan	AE-106002-01	AE-106002-01	AE-106002-01
F		Indoor Coil Base Pan (w/insulation)	AS-106004-01	AS-106004-01	AS-106004-01
INSIDE CABINET:					
G		Bulkhead Assembly (w/insulation)	AS-106011-01	AS-106011-01	AS-106011-01
H		Blower Deck	AE-106007-01	AE-106007-01	AE-106007-01
H1		Blower Support Wrap	AE-106042-01	AE-106042-01	AE-106042-01
I		Lower Air Stop	AE-106008-01	AE-106008-01	AE-106008-01
J		Burner Shroud	AE-106041-01	AE-106041-01	AE-106041-01
J1		Gasket	68-22079-04	68-22079-04	68-22079-04
K		Side Assembly (for Burner Shroud)	AS-106041-04	AS-106041-04	AS-106041-04
L		Bottom Drain Center	68-106063-01	68-106063-01	68-106063-01
M		Service Port Panel	AE-106040-01	AE-106040-01	AE-106040-01
N		Compressor Mounting Plate	AE-106050-01	AE-106050-01	AE-106050-01

No.	Notes	MODEL TECHNICAL VARIATION COOLING CAPACITY/MAJOR SERIES	RGED ZR/ZS/ZT 090A	RGED ZR/ZS/ZT 102A	RGED ZR/ZS/ZT 120A
PANELS - FRONT					
1		Control Box Access Panel Assembly	AS-106038-07HT	AS-106038-07HT	AS-106038-07HT
2		Component Mounting Panel	AE-106020-01	AE-106020-01	AE-106020-01
8		Control Box Back	AE-106019-01	AE-106019-01	AE-106019-01
9		Support Bracket (for Gas Valve)	See Gas Controls for Correct Bracket		
11		Low Voltage Shield	AE-106107-01	AE-106107-01	AE-106107-01
12		Heating Access Panel Assembly	AS-106038-02HT	AS-106038-02HT	AS-106038-02HT
13		Compressor Access Panel Assembly	AE-106035-03HT	AE-106035-03HT	AE-106035-03HT
14		Blower Access Panel Assembly	AS-106038-01HT	AS-106038-01HT	AS-106038-01HT
18		Front Center Post (w/insulation)	AS-106122-01HT	AS-106122-01HT	AS-106122-01HT
		Flue Hood Outlet Assembly	See Heat Exchanger/Burner Assembly		
PANELS - FRONT (Hinged)					
1a		Top Bracket Assembly	AS-106181-01HT	AS-106181-01HT	AS-106181-01HT
1b		Control Box Access Panel - Latch Assembly	AS-106182-04HT	AS-106182-04HT	AS-106182-04HT
		Latch Assembly (For Control Access Panel) (1)	64-103465-01	64-103465-01	64-103465-01
		Finger Pull Latch Assembly (For Control Access Panel) (2)	64-103465-02	64-103465-02	64-103465-02
13a		Compressor Access Panel Assembly	AS-106180-01HT	AS-106180-01HT	AS-106180-01HT
14a		Blower Access - Top Bracket Assembly	AS-106181-02HT	AS-106181-02HT	AS-106181-02HT
14b		Blower Access Panel- Latch Assembly	AS-106182-01HT	AS-106182-01HT	AS-106182-01HT
		Latch Assembly (For Blower Access Panel) (1)	64-103465-01	64-103465-01	64-103465-01
		Finger Pull Latch Assembly (For Blower Access Panel) (2)	64-103465-02	64-103465-02	64-103465-02
14c		Blower Access Filler Panel	AS-106181-07HT	AS-106181-07HT	AS-106181-07HT
14d		Blower Access Rain Hood	AE-106035-37HT	AE-106035-37HT	AE-106035-37HT

No.	Notes	MODEL TECHNICAL VARIATION COOLING CAPACITY/MAJOR SERIES	RGED ZR/ZS/ZT 090A	RGED ZR/ZS/ZT 102A	RGED ZR/ZS/ZT 120A	
PANELS - RIGHT, REAR, TOP AND LEFT SIDES						
RIGHT:						
23		Supply/Return Panel Assembly	AS-106006-01HT	AS-106006-01HT	AS-106006-01HT	
24		Supply Cover Panel Assembly	AS-106036-01HT	AS-106036-01HT	AS-106036-01HT	
25		Return Cover Panel Assembly	AS-106036-02HT	AS-106036-02HT	AS-106036-02HT	
REAR:						
21		Filter Access Panel Assembly	AS-106054-01HT	AS-106054-01HT	AS-106054-01HT	
		Latch Assembly (For Filter Access Panel) (2)	64-103465-01	64-103465-01	64-103465-01	
22		Indoor Coil Access Panel Assembly	AS-106038-04HT	AS-106038-04HT	AS-106038-04HT	
22a		Rear Post	AE-106039-02HT	AE-106039-02HT	AE-106039-02HT	
REAR (Hinged):						
21a		Top Bracket Assembly	AS-106181-03HT	AS-106181-03HT	AS-106181-03HT	
21b		Filter Access Panel- Latch Assembly	AS-106182-02HT	AS-106182-02HT	AS-106182-02HT	
		Latch Assembly (For Filter Access Panel) (1)	64-103465-01	64-103465-01	64-103465-01	
		Finger Pull Latch Assembly (For Filter Access Panel) (2)	64-103465-02	64-103465-02	64-103465-02	
21c		Filter Access Rain Hood	AE-106035-37HT	AE-106035-37HT	AE-106035-37HT	
LEFT:						
26		Corner Panel - Front	AE-106031-01HT	AE-106031-01HT	AE-106031-01HT	
27		Corner Panel - Rear	AE-106032-01HT	AE-106032-01HT	AE-106032-01HT	
28		Service Port Door	AE-106060-01HT	AE-106060-01HT	AE-106060-01HT	
TOP:						
33		Top Panel Assembly	AS-106037-01HT	AS-106037-01HT	AS-106037-01HT	
35		Venturi (2)	68-104464-06	68-104464-06	68-104464-06	
36		Wire Grille (2)	95-104620-05	95-104620-05	95-104620-05	

No.	Notes	MODEL TECHNICAL VARIATION COOLING CAPACITY/MAJOR SERIES ELECTRICAL DESIGNATION	RGED ZR/ZS/ZT 090A C	RGED ZR/ZS/ZT 102A C	RGED ZR/ZS/ZT 120A C
ELECTRIC GROUP					
39a		High Pressure Control	See Coil Group		
39b		Low Pressure Control	See Coil Group		
63a	Stk	Sensor Assembly - (Clogged Drain)	AS-106025-01	AS-106025-01	AS-106025-01
63b	Stk	Pressure Switch Assembly - (Clogged Filter), for DDC models	42-103320-28	42-103320-28	42-103320-28
CONTROL BOX COMPONENTS:					
57	Stk	Transformer - Control	46-42515-08	46-42515-08	46-42515-08
58		Ground Lug	45-19000-02	45-19000-02	45-19000-02
59	Stk	Contactora - Blower	42-102664-08	42-102664-08	42-102664-08
59a	Stk	Relay - Blower (DDC, VFD)	42-21571-08	42-21571-08	42-21571-08
60		Capacitor - Fan Motor	See Fan Group		
60a		Strap - Capacitor	AE-50892-01 (2)	AE-50892-01 (2)	AE-50892-01 (2)
61a		Integrated Furnace Control Board (IFC)	See Gas Controls		
61b		Unit Controller (RTU-C), for DDC Models	47-102883-02	47-102883-02	47-102883-02
62a	Stk	Contactora - Compressor	42-102664-08	42-102664-08	42-102664-12
WIRING HARNESES:					
		Wiring Harness - Fan Motor #1	See Fan Group		
		Wiring Harness - Fan Motor #2	See Fan Group		
		Plug Harness - Compressor	See Compressor Group		
		Plug Harness - Compressor, Low Voltage	See Compressor Group		
		Bypass Plug - Economizer (12 Pin Plug)	45-61997-55	45-61997-55	45-61997-55
		Jumper - 7 Pin Connector (Unit Configuration)	45-42522-97	45-42522-97	45-42522-97
		Wiring Harness - (14 pin from P6 on RTU-C to HPC, OAT, LPC, FS)	45-42522-127	45-42522-127	45-42522-127
		Wiring Harness - (8 pin plug from P5 on RTU-C to sensors: RAT, FPS, CFS, DAT)	45-42522-128	45-42522-128	45-42522-128
		Wiring Harness - Economizer (9 pin plug from P4 on RTU-C to PL22, ELM)	45-42522-129	45-42522-129	45-42522-129
		Bypass Plug - Comfort Alert (5 Pin Plug)	45-42522-130	45-42522-130	45-42522-130
		Wiring Harness - IFC Communication (4 pin from IFC to 4 pin on RTU-C)	45-42522-131	45-42522-131	45-42522-131
		Wiring Harness - 7 Pin Plug to High Pressure Control, Low Ambient Control, Compressor Contactora, Freeze Sensor	45-42522-132	45-42522-132	45-42522-132
		Wiring Harness - 8 Pin Plug to Blower Contactora	45-42522-133	45-42522-133	45-42522-133
		Wiring Harness - From 9 pin & 8 pin on Board to NPC, MRLC, MLC and Gas Controls	45-42522-135	45-42522-135	45-42522-135
		Wiring Harness - VFD Communication (4 pin from RTU-C to VFD)	45-42522-137	45-42522-137	45-42522-137
		Wiring Harness - Reheat (from 12 pin on RTU-C to 8 connectors & sensor)	45-42522-138	45-42522-138	45-42522-138
		Wiring Harness - Outdoor Fan	See Fan Group		
		Wiring Harness - 4 Pin Plug to Blower Contactora	45-42522-142	45-42522-142	45-42522-142
		Wiring Harness - 4 Pin Plug to Indoor Blower Motor (IBM)	45-42522-143	45-42522-143	45-42522-143
		Wiring Harness - VFD Harness (from compressor contactora (CC1) to IBM Input Harness)	45-42522-144	45-42522-144	45-42522-144
		Wiring Harness - VFD Output to Motor Harness (4 pin plug to 4 connectors on IBM)	45-42522-145	45-42522-145	45-42522-145
		Wiring Harness - VFD Input Harness (4 pin plug to 4 connectors on VFD board)	45-42522-146	45-42522-146	45-42522-146
		Bypass Plug - Freeze Stat Jumper (2 Pin Plug)	45-42522-151	45-42522-151	45-42522-151
		Wiring Harness - Economizer (15 Pin on IFC to Mass Air Sensor, Economizer)	45-102706-29	45-102706-29	45-102706-29
		Wiring Harness - (Low Ambient Control to Fan Motor Harnesses)	45-106065-02	45-106065-02	45-106065-02

No.	Notes	MODEL TECHNICAL VARIATION COOLING CAPACITY/MAJOR SERIES ELECTRICAL DESIGNATION	RGED ZR/ZS/ZT 090A D	RGED ZR/ZS/ZT 102A D	RGED ZR/ZS/ZT 120A D
ELECTRIC GROUP					
39a		High Pressure Control	See Coil Group		
39b		Low Pressure Control	See Coil Group		
63a	Stk	Sensor Assembly - (Clogged Drain)	AS-106025-01	AS-106025-01	AS-106025-01
63b	Stk	Pressure Switch Assembly - (Clogged Filter), for DDC models	42-103320-28	42-103320-28	42-103320-28
CONTROL BOX COMPONENTS:					
57	Stk	Transformer - Control	46-42515-09	46-42515-09	46-42515-09
58		Ground Lug	45-19000-02	45-19000-02	45-19000-02
59	Stk	Contactora - Blower	42-102664-08	42-102664-08	42-102664-08
59a	Stk	Relay - Blower (DDC, VFD)	42-21571-08	42-21571-08	42-21571-08
60		Capacitor - Fan Motor	See Fan Group		
60a		Strap - Capacitor	AE-50892-01 (2)	AE-50892-01 (2)	AE-50892-01 (2)
61a		Integrated Furnace Control Board (IFC)	See Gas Controls		
61b		Unit Controller (RTU-C), for DDC Models	47-102883-02	47-102883-02	47-102883-02
62a	Stk	Contactora - Compressor	42-102664-08	42-102664-08	42-102664-12
WIRING HARNESES:					
		Wiring Harness - Fan Motor #1	See Fan Group		
		Wiring Harness - Fan Motor #2	See Fan Group		
		Plug Harness - Compressor	See Compressor Group		
		Plug Harness - Compressor, Low Voltage	See Compressor Group		
		Bypass Plug - Economizer (12 Pin Plug)	45-61997-55	45-61997-55	45-61997-55
		Jumper - 7 Pin Connector (Unit Configuration)	45-42522-97	45-42522-97	45-42522-97
		Wiring Harness - (14 pin from P6 on RTU-C to HPC, OAT, LPC, FS)	45-42522-127	45-42522-127	45-42522-127
		Wiring Harness - (8 pin plug from P5 on RTU-C to sensors: RAT, FPS, CFS, DAT)	45-42522-128	45-42522-128	45-42522-128
		Wiring Harness - Economizer (9 pin plug from P4 on RTU-C to PL22, ELM)	45-42522-129	45-42522-129	45-42522-129
		Bypass Plug - Comfort Alert (5 Pin Plug)	45-42522-130	45-42522-130	45-42522-130
		Wiring Harness - IFC Communication (4 pin from IFC to 4 pin on RTU-C)	45-42522-131	45-42522-131	45-42522-131
		Wiring Harness - 7 Pin Plug to High Pressure Control, Low Ambient Control, Compressor Contactora, Freeze Sensor	45-42522-132	45-42522-132	45-42522-132
		Wiring Harness - 8 Pin Plug to Blower Contactora	45-42522-133	45-42522-133	45-42522-133
		Wiring Harness - From 9 pin & 8 pin on Board to NPC, MRLC, MLC and Gas Controls	45-42522-135	45-42522-135	45-42522-135
		Wiring Harness - VFD Communication (4 pin from RTU-C to VFD)	45-42522-137	45-42522-137	45-42522-137
		Wiring Harness - Reheat (from 12 pin on RTU-C to 8 connectors & sensor)	45-42522-138	45-42522-138	45-42522-138
		Wiring Harness - Outdoor Fan	See Fan Group		
		Wiring Harness - 4 Pin Plug to Blower Contactora	45-42522-142	45-42522-142	45-42522-142
		Wiring Harness - 4 Pin Plug to Indoor Blower Motor (IBM)	45-42522-143	45-42522-143	45-42522-143
		Wiring Harness - VFD Harness (from compressor contactora (CC1) to IBM Input Harness)	45-42522-144	45-42522-144	45-42522-144
		Wiring Harness - VFD Output to Motor Harness (4 pin plug to 4 connectors on IBM)	45-42522-145	45-42522-145	45-42522-145
		Wiring Harness - VFD Input Harness (4 pin plug to 4 connectors on VFD board)	45-42522-146	45-42522-146	45-42522-146
		Bypass Plug - Freeze Stat Jumper (2 Pin Plug)	45-42522-151	45-42522-151	45-42522-151
		Wiring Harness - Economizer (15 Pin on IFC to Mass Air Sensor, Economizer)	45-102706-29	45-102706-29	45-102706-29
		Wiring Harness - (Low Ambient Control to Fan Motor Harnesses)	45-106065-02	45-106065-02	45-106065-02

No.	Notes	MODEL TECHNICAL VARIATION COOLING CAPACITY/MAJOR SERIES ELECTRICAL DESIGNATION	RGED ZR 090A Y	RGED ZR 102A Y	RGED ZR 120A Y
ELECTRIC GROUP					
39a		High Pressure Control	See Coil Group		
39b		Low Pressure Control	See Coil Group		
63a	Stk	Sensor Assembly - (Clogged Drain)	AS-106025-01	AS-106025-01	AS-106025-01
63b	Stk	Pressure Switch Assembly - (Clogged Filter), for DDC models	42-103320-28	42-103320-28	42-103320-28
CONTROL BOX COMPONENTS:					
57	Stk	Transformer - Control	46-42515-08	46-42515-08	46-42515-08
57a	Stk	Transformer - Step Down	46-23585-03	46-23585-03	46-23585-03
58		Ground Lug	45-19000-02	45-19000-02	45-19000-02
59	Stk	Contactora - Blower	42-102664-08	42-102664-08	42-102664-08
60		Capacitor - Fan Motor	See Fan Group		
60a		Strap - Capacitor	AE-50892-01 (2)	AE-50892-01 (2)	AE-50892-01 (2)
61a		Integrated Furnace Control Board (IFC)	See Gas Controls		
61b		Unit Controller (RTU-C), for DDC Models	47-102883-02	47-102883-02	47-102883-02
62a	Stk	Contactora - Compressor	42-102664-08	42-102664-08	42-102664-12
WIRING HARNESES:					
		Wiring Harness - Fan Motor #1	See Fan Group		
		Wiring Harness - Fan Motor #2	See Fan Group		
		Plug Harness - Compressor	See Compressor Group		
		Plug Harness - Compressor, Low Voltage	See Compressor Group		
		Bypass Plug - Economizer (12 Pin Plug)	45-61997-55	45-61997-55	45-61997-55
		Jumper - 7 Pin Connector (Unit Configuration)	45-42522-97	45-42522-97	45-42522-97
		Wiring Harness - (14 pin from P6 on RTU-C to HPC, OAT, LPC, FS)	45-42522-127	45-42522-127	45-42522-127
		Wiring Harness - (8 pin plug from P5 on RTU-C to sensors: RAT, FPS, CFS, DAT)	45-42522-128	45-42522-128	45-42522-128
		Wiring Harness - Economizer (9 pin plug from P4 on RTU-C to PL22, ELM)	45-42522-129	45-42522-129	45-42522-129
		Bypass Plug - Comfort Alert (5 Pin Plug)	45-42522-130	45-42522-130	45-42522-130
		Wiring Harness - IFC Communication (4 pin from IFC to 4 pin on RTU-C)	45-42522-131	45-42522-131	45-42522-131
		Wiring Harness - 7 Pin Plug to High Pressure Control, Low Ambient Control, Compressor Contactora, Freeze Sensor	45-42522-132	45-42522-132	45-42522-132
		Wiring Harness - 8 Pin Plug to Blower Contactora	45-42522-133	45-42522-133	45-42522-133
		Wiring Harness - From 9 pin & 8 pin on Board to NPC, MRLC, MLC and Gas Controls	45-42522-135	45-42522-135	45-42522-135
		Wiring Harness - VFD Communication (4 pin from RTU-C to VFD)	45-42522-137	45-42522-137	45-42522-137
		Wiring Harness - Reheat (from 12 pin on RTU-C to 8 connectors & sensor)	45-42522-138	45-42522-138	45-42522-138
		Wiring Harness - Outdoor Fan	See Fan Group		
		Wiring Harness - 4 Pin Plug to Blower Contactora	45-42522-142	45-42522-142	45-42522-142
		Wiring Harness - 4 Pin Plug to Indoor Blower Motor (IBM)	45-42522-143	45-42522-143	45-42522-143
		Wiring Harness - VFD Harness (from compressor contactora (CC1) to IBM Input Harness)	45-42522-144	45-42522-144	45-42522-144
		Wiring Harness - VFD Output to Motor Harness (4 pin plug to 4 connectors on IBM)	45-42522-145	45-42522-145	45-42522-145
		Wiring Harness - VFD Input Harness (4 pin plug to 4 connectors on VFD board)	45-42522-146	45-42522-146	45-42522-146
		Bypass Plug - Freeze Stat Jumper (2 Pin Plug)	45-42522-151	45-42522-151	45-42522-151
		Wiring Harness - Economizer (15 Pin on IFC to Mass Air Sensor, Economizer)	45-102706-29	45-102706-29	45-102706-29
		Wiring Harness - (Low Ambient Control to Fan Motor Harnesses)	45-106065-02	45-106065-02	45-106065-02

No.	Notes	MODEL TECHNICAL VARIATION COOLING CAPACITY/MAJOR SERIES ELECTRICAL DESIGNATION	RGED ZR/ZS/ZT 090A C	RGED ZR/ZS/ZT 102A C	RGED ZR/ZS/ZT 120A C	
FAN GROUP						
52	Stk	Fan Motor (2)	51-101774-47	51-101774-47	51-42534-24	
		Wiring Harness - Outdoor Fan 36 inch length	45-106065-01	45-106065-01	45-106065-01	
		Wiring Harness - Outdoor Fan 50 inch length	45-106065-03	45-106065-03	45-106065-03	
53	Stk	Fan Blade (2)	70-42572-04	70-42572-04	70-42572-04	
60	Stk	Capacitor - Fan Motor (2)	43-100496-12	43-100496-12	43-100496-12	

No.	Notes	MODEL TECHNICAL VARIATION COOLING CAPACITY ELECTRICAL DESIGNATION	RGED ZR/ZS/ZT 090A D	RGED ZR/ZS/ZT 102A D	RGED ZR/ZS/ZT 120A D	
FAN GROUP						
52	Stk	Fan Motor (2)	51-101774-48	51-101774-48	51-42534-25	
		Wiring Harness - Outdoor Fan 36 inch leads	45-106065-01	45-106065-01	45-106065-01	
		Wiring Harness - Outdoor Fan 50 inch leads	45-106065-03	45-106065-03	45-106065-03	
53	Stk	Fan Blade (2)	70-42572-04	70-42572-04	70-42572-04	
60	Stk	Capacitor - Fan Motor (2)	43-100496-04	43-100496-04	43-100496-12	

No.	Notes	MODEL TECHNICAL VARIATION COOLING CAPACITY ELECTRICAL DESIGNATION	RGED ZR 090A Y	RGED ZR 102A Y	RGED ZR 120A Y	
FAN GROUP						
52	Stk	Fan Motor (2)	51-101774-49	51-101774-49	51-42534-26	
		Wiring Harness - Outdoor Fan 36 inch leads	45-106065-01	45-106065-01	45-106065-01	
		Wiring Harness - Outdoor Fan 50 inch leads	45-106065-03	45-106065-03	45-106065-03	
53	Stk	Fan Blade (2)	70-42572-04	70-42572-04	70-42572-04	
60	Stk	Capacitor - Fan Motor (2)	43-100496-04	43-100496-04	43-100496-12	

No.	Notes	MODEL TECHNICAL VARIATION COOLING CAPACITY/MAJOR SERIES VOLTAGE DRIVE PACKAGE	RGED ZR/ZS 090A C A	RGED ZR/ZS 102A C A	RGED ZR/ZS 120A C A
BLOWER ASSEMBLY GROUP - BELT DRIVE					
64	Stk	Blower Assembly (Includes Items 65-68)	70-106090-01	70-106090-01	70-106090-01
65	Stk	Blower Wheel	70-42540-02	70-42540-02	70-42540-02
66		Bearing Frame Tri-Arm (2)	70-42540-05	70-42540-05	70-42540-05
67		Bearing with Bearing Lock (2)	70-41854-02	70-41854-02	70-41854-02
68	Stk	Blower Shaft	PD706271	PD706271	PD706271
69	Stk	"H" Bushing w/integral key	71-104629-02	71-104629-02	71-104629-02
70		Motor Mount Plate	AE-106109-01	AE-106109-01	AE-106109-01
71	Stk	Blower Motor	51-42537-05	51-42537-05	51-42537-05
72	Stk	Variable Sheave	71-104625-16	71-104625-16	71-104625-16
73	Stk	Belt	71-40235-49	71-40235-49	71-40235-49
74	Stk	Fixed Sheave	71-104627-23	71-104627-22	71-104627-22

No.	Notes	MODEL TECHNICAL VARIATION COOLING CAPACITY/MAJOR SERIES VOLTAGE DRIVE PACKAGE	RGED ZR/ZS 090A C B	RGED ZR/ZS 102A C B	RGED ZR/ZS 120A C B
BLOWER ASSEMBLY GROUP - BELT DRIVE					
64	Stk	Blower Assembly (Includes Items 65-68)	70-106090-01	70-106090-01	70-106090-01
65	Stk	Blower Wheel	70-42540-02	70-42540-02	70-42540-02
66		Bearing Frame Tri-Arm (2)	70-42540-05	70-42540-05	70-42540-05
67		Bearing with Bearing Lock (2)	70-41854-02	70-41854-02	70-41854-02
68	Stk	Blower Shaft	PD706271	PD706271	PD706271
69	Stk	"H" Bushing w/integral key	71-104629-02	71-104629-02	71-104629-02
70		Motor Mount Plate	AE-106109-01	AE-106109-01	AE-106109-01
71	Stk	Blower Motor	51-42537-06	51-42537-06	51-42537-06
72	Stk	Variable Sheave	71-104625-08	71-104625-08	71-104625-08
73	Stk	Belt	71-40235-50	71-40235-50	71-40235-50
74	Stk	Fixed Sheave	71-104627-23	71-104627-22	71-104627-22

No.	Notes	MODEL TECHNICAL VARIATION COOLING CAPACITY/MAJOR SERIES VOLTAGE DRIVE PACKAGE	RGED ZR/ZS 090A C C	RGED ZR/ZS 102A C C	RGED ZR/ZS 120A C C
BLOWER ASSEMBLY GROUP - BELT DRIVE					
64	Stk	Blower Assembly (Includes Items 65-68)	70-106090-01	70-106090-01	70-106090-01
65	Stk	Blower Wheel	70-42540-02	70-42540-02	70-42540-02
66		Bearing Frame Tri-Arm (2)	70-42540-05	70-42540-05	70-42540-05
67		Bearing with Bearing Lock (2)	70-41854-02	70-41854-02	70-41854-02
68	Stk	Blower Shaft	PD706271	PD706271	PD706271
69	Stk	"H" Bushing w/integral key	71-104629-02	71-104629-02	71-104629-02
70		Motor Mount Plate	AE-106109-01	AE-106109-01	AE-106109-01
71	Stk	Blower Motor	51-42537-06	51-42537-06	51-42537-06
72	Stk	Variable Sheave	71-104625-17	71-104625-17	71-104625-17
73	Stk	Belt	71-40235-51	71-40235-51	71-40235-51
74	Stk	Fixed Sheave	71-104627-23	71-104627-22	71-104627-22

No.	Notes	MODEL TECHNICAL VARIATION COOLING CAPACITY/MAJOR SERIES VOLTAGE DRIVE PACKAGE	RGED	RGED	RGED
			ZR/ZS 090A D A	ZR/ZS 102A D A	ZR/ZS 120A D A
BLOWER ASSEMBLY GROUP - BELT DRIVE					
64	Stk	Blower Assembly (Includes Items 65-68)	70-106090-01	70-106090-01	70-106090-01
65	Stk	Blower Wheel	70-42540-02	70-42540-02	70-42540-02
66		Bearing Frame Tri-Arm (2)	70-42540-05	70-42540-05	70-42540-05
67		Bearing with Bearing Lock (2)	70-41854-02	70-41854-02	70-41854-02
68	Stk	Blower Shaft	PD706271	PD706271	PD706271
69	Stk	"H" Bushing w/integral key	71-104629-02	71-104629-02	71-104629-02
70		Motor Mount Plate	AE-106109-01	AE-106109-01	AE-106109-01
71	Stk	Blower Motor	51-42537-05	51-42537-05	51-42537-05
72	Stk	Variable Sheave	71-104625-16	71-104625-16	71-104625-16
73	Stk	Belt	71-40235-49	71-40235-49	71-40235-49
74	Stk	Fixed Sheave	71-104627-23	71-104627-22	71-104627-22

No.	Notes	MODEL TECHNICAL VARIATION COOLING CAPACITY/MAJOR SERIES VOLTAGE DRIVE PACKAGE	RGED	RGED	RGED
			ZR/ZS 090A D B	ZR/ZS 102A D B	ZR/ZS 120A D B
BLOWER ASSEMBLY GROUP - BELT DRIVE					
64	Stk	Blower Assembly (Includes Items 65-68)	70-106090-01	70-106090-01	70-106090-01
65	Stk	Blower Wheel	70-42540-02	70-42540-02	70-42540-02
66		Bearing Frame Tri-Arm (2)	70-42540-05	70-42540-05	70-42540-05
67		Bearing with Bearing Lock (2)	70-41854-02	70-41854-02	70-41854-02
68	Stk	Blower Shaft	PD706271	PD706271	PD706271
69	Stk	"H" Bushing w/integral key	71-104629-02	71-104629-02	71-104629-02
70		Motor Mount Plate	AE-106109-01	AE-106109-01	AE-106109-01
71	Stk	Blower Motor	51-42537-06	51-42537-06	51-42537-06
72	Stk	Variable Sheave	71-104625-08	71-104625-08	71-104625-08
73	Stk	Belt	71-40235-50	71-40235-50	71-40235-50
74	Stk	Fixed Sheave	71-104627-23	71-104627-22	71-104627-22

No.	Notes	MODEL TECHNICAL VARIATION COOLING CAPACITY/MAJOR SERIES VOLTAGE DRIVE PACKAGE	RGED	RGED	RGED
			ZR/ZS 090A D C	ZR/ZS 102A D C	ZR/ZS 120A D C
BLOWER ASSEMBLY GROUP - BELT DRIVE					
64	Stk	Blower Assembly (Includes Items 65-68)	70-106090-01	70-106090-01	70-106090-01
65	Stk	Blower Wheel	70-42540-02	70-42540-02	70-42540-02
66		Bearing Frame Tri-Arm (2)	70-42540-05	70-42540-05	70-42540-05
67		Bearing with Bearing Lock (2)	70-41854-02	70-41854-02	70-41854-02
68	Stk	Blower Shaft	PD706271	PD706271	PD706271
69	Stk	"H" Bushing w/integral key	71-104629-02	71-104629-02	71-104629-02
70		Motor Mount Plate	AE-106109-01	AE-106109-01	AE-106109-01
71	Stk	Blower Motor	51-42537-06	51-42537-06	51-42537-06
72	Stk	Variable Sheave	71-104625-17	71-104625-17	71-104625-17
73	Stk	Belt	71-40235-51	71-40235-51	71-40235-51
74	Stk	Fixed Sheave	71-104627-23	71-104627-22	71-104627-22

No.	Notes	MODEL TECHNICAL VARIATION COOLING CAPACITY/MAJOR SERIES VOLTAGE DRIVE PACKAGE	RGED	RGED	RGED
			ZR 090A Y A	ZR 102A Y A	ZR 120A Y A
BLOWER ASSEMBLY GROUP - BELT DRIVE					
64	Stk	Blower Assembly (Includes Items 65-68)	70-106090-01	70-106090-01	70-106090-01
65	Stk	Blower Wheel	70-42540-02	70-42540-02	70-42540-02
66		Bearing Frame Tri-Arm (2)	70-42540-05	70-42540-05	70-42540-05
67		Bearing with Bearing Lock (2)	70-41854-02	70-41854-02	70-41854-02
68	Stk	Blower Shaft	PD706271	PD706271	PD706271
69	Stk	"H" Bushing w/integral key	71-104629-02	71-104629-02	71-104629-02
70		Motor Mount Plate	AE-106109-01	AE-106109-01	AE-106109-01
71	Stk	Blower Motor	51-42536-05	51-42536-05	51-42536-05
72	Stk	Variable Sheave	71-104625-16	71-104625-16	71-104625-16
73	Stk	Belt	71-40235-49	71-40235-49	71-40235-49
74	Stk	Fixed Sheave	71-104627-23	71-104627-23	71-104627-22

No.	Notes	MODEL TECHNICAL VARIATION COOLING CAPACITY/MAJOR SERIES VOLTAGE DRIVE PACKAGE	RGED	RGED	RGED
			ZR 090A Y B	ZR 102A Y B	ZR 120A Y B
BLOWER ASSEMBLY GROUP - BELT DRIVE					
64	Stk	Blower Assembly (Includes Items 65-68)	70-106090-01	70-106090-01	70-106090-01
65	Stk	Blower Wheel	70-42540-02	70-42540-02	70-42540-02
66		Bearing Frame Tri-Arm (2)	70-42540-05	70-42540-05	70-42540-05
67		Bearing with Bearing Lock (2)	70-41854-02	70-41854-02	70-41854-02
68	Stk	Blower Shaft	PD706271	PD706271	PD706271
69	Stk	"H" Bushing w/integral key	71-104629-02	71-104629-02	71-104629-02
70		Motor Mount Plate	AE-106109-01	AE-106109-01	AE-106109-01
71	Stk	Blower Motor	51-42537-07	51-42537-07	51-42537-07
72	Stk	Variable Sheave	71-104625-08	71-104625-08	71-104625-08
73	Stk	Belt	71-40235-50	71-40235-50	71-40235-50
74	Stk	Fixed Sheave	71-104627-23	71-104627-22	71-104627-22

No.	Notes	MODEL TECHNICAL VARIATION COOLING CAPACITY/MAJOR SERIES VOLTAGE DRIVE PACKAGE	RGED	RGED	RGED
			ZR 090A Y C	ZR 102A Y C	ZR 120A Y C
BLOWER ASSEMBLY GROUP - BELT DRIVE					
64	Stk	Blower Assembly (Includes Items 65-68)	70-106090-01	70-106090-01	70-106090-01
65	Stk	Blower Wheel	70-42540-02	70-42540-02	70-42540-02
66		Bearing Frame Tri-Arm (2)	70-42540-05	70-42540-05	70-42540-05
67		Bearing with Bearing Lock (2)	70-41854-02	70-41854-02	70-41854-02
68	Stk	Blower Shaft	PD706271	PD706271	PD706271
69	Stk	"H" Bushing w/integral key	71-104629-02	71-104629-02	71-104629-02
70		Motor Mount Plate	AE-106109-01	AE-106109-01	AE-106109-01
71	Stk	Blower Motor	51-42537-07	51-42537-07	51-42537-07
72	Stk	Variable Sheave	71-104625-17	71-104625-17	71-104625-17
73	Stk	Belt	71-40235-51	71-40235-51	71-40235-51
74	Stk	Fixed Sheave	71-104627-23	71-104627-22	71-104627-22

No.	Notes	MODEL TECHNICAL VARIATION COOLING CAPACITY/MAJOR SERIES VOLTAGE DRIVE PACKAGE	RGED	RGED	RGED	RGED
			ZT 090A C F	ZT 090A C G	ZT 090A D F	ZT 090A D G
BLOWER ASSEMBLY GROUP - BELT DRIVE VFD						
64	Stk	Blower Assembly (Includes Items 65-68)	70-106090-01	70-106090-01	70-106090-01	70-106090-01
65	Stk	Blower Wheel	70-42540-02	70-42540-02	70-42540-02	70-42540-02
66		Bearing Frame Tri-Arm (2)	70-42540-05	70-42540-05	70-42540-05	70-42540-05
67		Bearing with Bearing Lock (2)	70-41854-02	70-41854-02	70-41854-02	70-41854-02
68	Stk	Blower Shaft	PD706271	PD706271	PD706271	PD706271
69	Stk	"H" Bushing w/integral key	71-104629-02	71-104629-02	71-104629-02	71-104629-02
70		Motor Mount Plate	AE-106109-01	AE-106109-01	AE-106109-01	AE-106109-01
70a		Motor Mount Bracket (VFD)	AE-106106-01	AE-106106-01	AE-106106-01	AE-106106-01
70b		Mounting Mount Plate (VFD)	AE-106106-02	AE-106106-02	AE-106106-02	AE-106106-02
71	Stk	Blower Motor	51-42537-05	51-42537-06	51-42537-05	51-42537-06
71a		Variable Frequency Drive (VFD, Non-DDC)	47-104280-02	N/A	N/A	N/A
71a		Variable Frequency Drive (VFD, DDC)	47-104280-01	47-104281-01	47-104285-01	47-104286-01
72	Stk	Variable Sheave	71-104625-16	71-104625-08	71-104625-16	71-104625-08
73	Stk	Belt	71-40235-49	71-40235-50	71-40235-49	71-40235-50
74	Stk	Fixed Sheave	71-104627-23	71-104627-23	71-104627-23	71-104627-23

No.	Notes	MODEL TECHNICAL VARIATION COOLING CAPACITY/MAJOR SERIES VOLTAGE DRIVE PACKAGE	RGED			
			ZT 102A D F			
BLOWER ASSEMBLY GROUP - BELT DRIVE VFD						
64	Stk	Blower Assembly (Includes Items 65-68)	70-106090-01			
65	Stk	Blower Wheel	70-42540-02			
66		Bearing Frame Tri-Arm (2)	70-42540-05			
67		Bearing with Bearing Lock (2)	70-41854-02			
68	Stk	Blower Shaft	PD706271			
69	Stk	"H" Bushing w/integral key	71-104629-02			
70		Motor Mount Plate	AE-106109-01			
70a		Motor Mount Bracket (VFD)	AE-106106-01			
70b		Mounting Mount Plate (VFD)	AE-106106-02			
71	Stk	Blower Motor	51-42537-06			
71a		Variable Frequency Drive (VFD)	47-104285-01			
72	Stk	Variable Sheave	71-104625-16			
73	Stk	Belt	71-40235-49			
74	Stk	Fixed Sheave	71-104627-22			

No.	Notes	MODEL TECHNICAL VARIATION COOLING CAPACITY/MAJOR SERIES VOLTAGE DRIVE PACKAGE	RGED	RGED	RGED	RGED
			ZT 120A C F	ZT 120A C G	ZT 120A C H	ZT 120A D F
BLOWER ASSEMBLY GROUP - BELT DRIVE VFD						
64	Stk	Blower Assembly (Includes Items 65-68)	70-106090-01	70-106090-01	70-106090-01	70-106090-01
65	Stk	Blower Wheel	70-42540-02	70-42540-02	70-42540-02	70-42540-02
66		Bearing Frame Tri-Arm (2)	70-42540-05	70-42540-05	70-42540-05	70-42540-05
67		Bearing with Bearing Lock (2)	70-41854-02	70-41854-02	70-41854-02	70-41854-02
68	Stk	Blower Shaft	PD706271	PD706271	PD706271	PD706271
69	Stk	"H" Bushing w/integral key	71-104629-02	71-104629-02	71-104629-02	71-104629-02
70		Motor Mount Plate	AE-106109-01	AE-106109-01	AE-106109-01	AE-106109-01
70a		Motor Mount Bracket (VFD)	AE-106106-01	AE-106106-01	AE-106106-01	AE-106106-01
70b		Mounting Mount Plate (VFD)	AE-106106-02	AE-106106-02	AE-106106-02	AE-106106-02
71	Stk	Blower Motor	51-42537-05	51-42537-06	51-42537-06	51-42537-05
71a		Variable Frequency Drive (VFD, Non-DDC)	47-104280-02	N/A	N/A	N/A
71a		Variable Frequency Drive (VFD, DDC)	47-104280-01	47-104281-01	47-104281-01	47-104285-01
72	Stk	Variable Sheave	71-104625-16	71-104625-08	71-104625-17	71-104625-16
73	Stk	Belt	71-40235-49	71-40235-50	71-40235-51	71-40235-49
74	Stk	Fixed Sheave	71-104627-22	71-104627-22	71-104627-22	71-104627-22

No.	Notes	MODEL TECHNICAL VARIATION COOLING CAPACITY/MAJOR SERIES	RGED ZR/ZS/ZT 090A	RGED ZR/ZS/ZT 102A	RGED ZR/ZS/ZT 120A	
COIL GROUP						
EVAPORATOR COIL GROUP:						
42	Stk	Evaporator Coil	AS-106105-01	AS-106105-02	AS-106105-02	
42a	Stk	TXV	61-106093-01	61-106093-07	61-106093-02	
42b		Filter	54-17531-18 (4)	54-17531-18 (4)	54-17531-18 (4)	
42c		Bulb Strap Kit - TXV	64-101357-01	64-101357-01	64-101357-01	
Reheat (42d, 42e, 42f):						
42d	Stk	Reheat Coil	65-106108-01	65-106108-01	65-106108-01	
42e	Stk	Liquid Valve (LV)	61-103961-18	61-103961-18	61-103961-18	
42e	Stk	Solenoid Coil (for LV)	61-103961-17	61-103961-17	61-103961-17	
42f	Stk	Reheat Valve (RV)	61-103961-18	61-103961-18	61-103961-18	
42f	Stk	Solenoid Coil (for RV)	61-103961-17	61-103961-17	61-103961-17	
43		Drain Pan Assembly	AS-106173-01	AS-106173-01	AS-106173-01	
FILTER FRAME:						
44		Filter Frame Assembly (items 45-49)	AS-106088-01	AS-106088-01	AS-106088-01	
45		Filter Rack - Mid Bar	AE-106085-01	AE-106085-01	AE-106085-01	
46		Filter Rack - Retainer Rod (2)	45-106030-01	45-106030-01	45-106030-01	
47		Filter Rack Top	AE-106087-01	AE-106087-01	AE-106087-01	
48		Filter Rack Bottom	AE-106084-01	AE-106084-01	AE-106084-01	
49		Filter Rack Slide (2)	AE-106086-01	AE-106086-01	AE-106086-01	
CONDENSER COIL GROUP:						
37	Stk	Condenser Coil	AS-106101-01	AS-106101-04	AS-106101-02	
37a		Gasket	68-22079-04	68-22079-04	68-22079-04	
38a	Stk	Filter Drier - Liquid Line	83-22755-23 (1)	83-22755-23 (1)	83-22755-23 (1)	
38b		Strap - Filter Drier	AE-102132-01 (1)	AE-102132-01 (1)	AE-102132-01 (1)	
38c		Valve Body (2)	61-106117-01	61-106117-01	61-106117-01	
38d		Hex Nut - Brass (2)	63-106119-01	63-106119-01	63-106119-01	
38e		Valve Core (2)	61-106118-01	61-106118-01	61-106118-01	
38f		Valve Cap (3)	83-100635-01	83-100635-01	83-100635-01	
38g		Valve Body (1)	61-18542-01	61-18542-01	61-18542-01	
38h		Valve Core (1)	61-18551-01	61-18551-01	61-18551-01	
39a	Stk	High Pressure Control	47-103669-01 (1)	47-103669-01 (1)	47-103669-01 (1)	
39b	Stk	Low Pressure Control	47-101529-09 (1)	47-101529-09 (1)	47-101529-09 (1)	
Reheat (39c, 39d):						
39c	Stk	Discharge Valve (DV)	61-103961-16	61-103961-16	61-103961-12	
39c	Stk	Solenoid Coil (for DV)	61-103961-07	61-103961-07	61-103961-13	
39d		Check Valve	83-102440-01	83-102440-01	83-102440-01	
40		Coil Mount (2)	AE-106121-01 HT	AE-106121-01 HT	AE-106121-01 HT	
		Coil Pad	68-104248-05 (4)	68-104248-05 (4)	68-104248-05 (4)	
		Foam Filler Seal (seals around top of coil)	68-106131-01	68-106131-01	68-106131-01	

No.	Notes	MODEL TECHNICAL VARIATION COOLING CAPACITY/MAJOR SERIES ELECTRICAL DESIGNATION	RGED	RGED	RGED		
			ZR/ZS/ZT 090A C	ZR/ZS/ZT 102A C	ZR/ZS/ZT 120A C		
COMPRESSOR GROUP							
		Compressor ID:	9199	9368	9262		
75	Stk	Compressor	55-102045-154	55-102045-158	55-102471-31S		
		Grommets - Compressor (4)	56-18518-06	56-18518-06	56-18518-06		
		Screw - Compressor (4)	63-20072-03	63-20072-03	63-20072-03		
	Stk	Plug Harness	45-100834-10	45-100834-10	See Note 3		
		High Pressure Control	See Coil Group				
		Low Pressure Control	See Coil Group				
		Compressor ID:	9252	9373	9267		
75	Stk	Compressor	55-23156-48	55-23156-52	55-23156-56		
		Grommets - Compressor (4)	56-18518-06	56-18518-06	56-18518-06		
		Screw - Compressor (4)	63-20072-03	63-20072-03	63-20072-03		
	Stk	Plug Harness	45-100834-10	45-100834-10	See Note 3		
	Stk	Plug Harness - Compressor, Low Voltage	45-101723-08	45-101723-08	45-101723-08		
		High Pressure Control	See Coil Group				
		Low Pressure Control	See Coil Group				
		Compressor ID:	9257	9378	9272		
75	Stk	Compressor	55-23156-48	55-23156-52	55-23156-56		
		Grommets - Compressor (4)	56-18518-06	56-18518-06	56-18518-06		
		Screw - Compressor (4)	63-20072-03	63-20072-03	63-20072-03		
	Stk	Plug Harness	45-100834-10	45-100834-10	See Note 3		
	Stk	Plug Harness - Compressor, Low Voltage	45-101723-08	45-101723-08	45-101723-08		
		High Pressure Control	See Coil Group				
		Low Pressure Control	See Coil Group				

No.	Notes	MODEL TECHNICAL VARIATION COOLING CAPACITY/MAJOR SERIES ELECTRICAL DESIGNATION	RGED	RGED	RGED		
			ZR/ZS/ZT 090A D	ZR/ZS/ZT 102A D	ZR/ZS/ZT 120A D		
COMPRESSOR GROUP							
		Compressor ID:	9200	9369	9263		
75	Stk	Compressor	55-102045-155	55-102045-159	55-102471-27S		
		Grommets - Compressor (4)	56-18518-06	56-18518-06	56-18518-06		
		Screw - Compressor (4)	63-20072-03	63-20072-03	63-20072-03		
	Stk	Plug Harness	45-100834-10	45-100834-10	See Note 3		
		High Pressure Control	See Coil Group				
		Low Pressure Control	See Coil Group				
		Compressor ID:	9253	9374	9268		
75	Stk	Compressor	55-23156-49	55-23156-53	55-23156-57		
		Grommets - Compressor (4)	56-18518-06	56-18518-06	56-18518-06		
		Screw - Compressor (4)	63-20072-03	63-20072-03	63-20072-03		
	Stk	Plug Harness	45-100834-10	45-100834-10	See Note 3		
	Stk	Plug Harness - Compressor, Low Voltage	45-101723-08	45-101723-08	45-101723-08		
		High Pressure Control	See Coil Group				
		Low Pressure Control	See Coil Group				
		Compressor ID:	9258	9379	9273		
75	Stk	Compressor	55-23156-49	55-23156-53	55-23156-57		
		Grommets - Compressor (4)	56-18518-06	56-18518-06	56-18518-06		
		Screw - Compressor (4)	63-20072-03	63-20072-03	63-20072-03		
	Stk	Plug Harness	45-100834-10	45-100834-10	See Note 3		
	Stk	Plug Harness - Compressor, Low Voltage	45-101723-04	45-101723-04	45-101723-04		
		High Pressure Control	See Coil Group				
		Low Pressure Control	See Coil Group				

No.	Notes	MODEL TECHNICAL VARIATION COOLING CAPACITY/MAJOR SERIES ELECTRICAL DESIGNATION	RGED ZR 090A Y	RGED ZR 102A Y	RGED ZR 120A Y	
COMPRESSOR GROUP						
		Compressor ID:	9201	9370	9264	
75	Stk	Compressor	55-102045-156	55-102045-160	55-102471-32S	
		Grommets - Compressor (4)	56-18518-06	56-18518-06	56-18518-06	
		Screw - Compressor (4)	63-20072-03	63-20072-03	63-20072-03	
	Stk	Plug Harness	45-100834-10	45-100834-10	See Note 3	
		High Pressure Control	See Coil Group			
		Low Pressure Control	See Coil Group			

No.	Notes	MODEL TECHNICAL VARIATION COOLING CAPACITY MAJOR SERIES ELECTRICAL DESIGNATION HEATING CAPACITY	RGED	RGED	RGED	
			ZR/ZS/ZT 090/102/120 A C/D/Y 15	ZR/ZS/ZT 090/102/120 A C/D/Y 20	ZR/ZS/ZT 090/102/120 A C/D/Y 22	
HEAT EXCHANGER, BURNER / MANIFOLD						
98	Stk	Heat Exchanger	AS-106069-02	AS-106069-01	AS-106069-01	
98a		Gasket	68-22079-04	68-22079-04	68-22079-04	
99		Inducer Mounting Plate Gasket	68-106078-01	68-106078-01	68-106078-01	
100		Turbulators	AE-106082-01 (6)	AE-106082-01 (9)	AE-106082-01 (9)	
101		Inducer Mounting Plate	AE-106079-01	AE-106079-02	AE-106079-03	
103a		Burner Support Bracket - Left	AE-106072-01	AE-106072-01	AE-106072-01	
103b		Burner Support Bracket - Right	AE-106071-01	AE-106071-01	AE-106071-01	
104a		Burner Support Center	AE-106070-01	AE-106070-01	AE-106070-01	
104b		Burner Bottom Cover	AE-106073-02	AE-106073-01	AE-106073-01	
105	Stk	Spark Ignitor	62-23556-12	62-23556-12	62-23556-12	
106	Stk	Burner	75-103532-01 (6)	75-103532-01 (9)	75-103532-01 (9)	
107		Number of Orifices	(6)	(9)	(9)	
		Square Head Plug - Burner Assembly	81-23593-01 (3)	N/A	N/A	
108		Screws - Burner Assembly	63-22429-05 (29)	63-22429-05 (33)	63-22429-05 (33)	
109	Stk	Manifold	See Gas Controls			
110		Gas Valve	See Gas Controls			
112	Stk	Flame Sensor	62-23543-01	62-23543-01	62-23543-01	
113	Stk	Pressure Switch (located in Control Box)	42-106081-01	42-106081-01	42-106081-01	
		Tubing (for pressure switch) - 10 ft roll	79-21491-93	79-21491-93	79-21491-93	
116	Stk	Limit - Manual Reset (Burner Compartment)	47-22861-05	47-22861-05	47-22861-05	
117	Stk	(IDB) Induced Draft Blower w/Gasket (C Voltage)	70-106080-01	70-106080-01	70-106080-01	
117	Stk	(IDB) Induced Draft Blower w/Gasket (D Voltage)	70-106080-02	70-106080-02	70-106080-02	
117	Stk	(IDB) Induced Draft Blower w/Gasket (Y Voltage)	70-106080-01	70-106080-01	70-106080-01	
		Gasket - IDB	PD687033	PD687033	PD687033	
117a		Capacitor - IDB	PD439106	PD439106	PD439106	
118		Flue Duct	58-106083-01	58-106083-01	58-106083-01	
		Flue Hood Outlet Assembly	AS-106115-01	AS-106115-01	AS-106115-01	
119		Enclosed Limit - Blower Shelf	47-106130-01	47-106130-01	47-106130-01	

No.	Notes	MODEL TECHNICAL VARIATION COOLING CAPACITY MAJOR SERIES GAS CODE	RGED	RGED	
			ZR/ZS/ZT 090/102/120 A 3A	ZR/ZS/ZT 090/102/120 A 3B	
GAS CONTROLS					
110	Stk	Gas Valve - Natural Gas (White Rodgers)	60-106075-01	60-106075-01	
110	Stk	Gas Valve - LP	See Note 1	See Note 1	
61a	Stk	Integrated Furnace Control Board (IFC)	62-102860-05	62-102860-07	
9		Support Bracket (for Gas Valve)	AE-106056-01	AE-106056-01	
109	Stk	Manifold	81-106058-01	81-106058-01	
	Stk	LP Conversion Kit	FP-39	FP-39	

No.	Notes	MODEL TECHNICAL VARIATION COOLING CAPACITY MAJOR SERIES GAS CODE	RGED	RGED	
			ZR/ZS/ZT 090/102/120 A 3D	ZR/ZS/ZT 090/102/120 A 3E	
GAS CONTROLS					
110	Stk	Gas Valve - Natural Gas (Honeywell)	60-106075-02	60-106075-02	
110	Stk	Gas Valve - LP	See Note 1	See Note 1	
61a	Stk	Integrated Furnace Control Board (IFC)	62-102860-05	62-102860-07	
9		Support Bracket (for Gas Valve)	AE-106056-03	AE-106056-03	
109	Stk	Manifold	81-106058-02	81-106058-02	
	Stk	LP Conversion Kit	FP-39	FP-39	

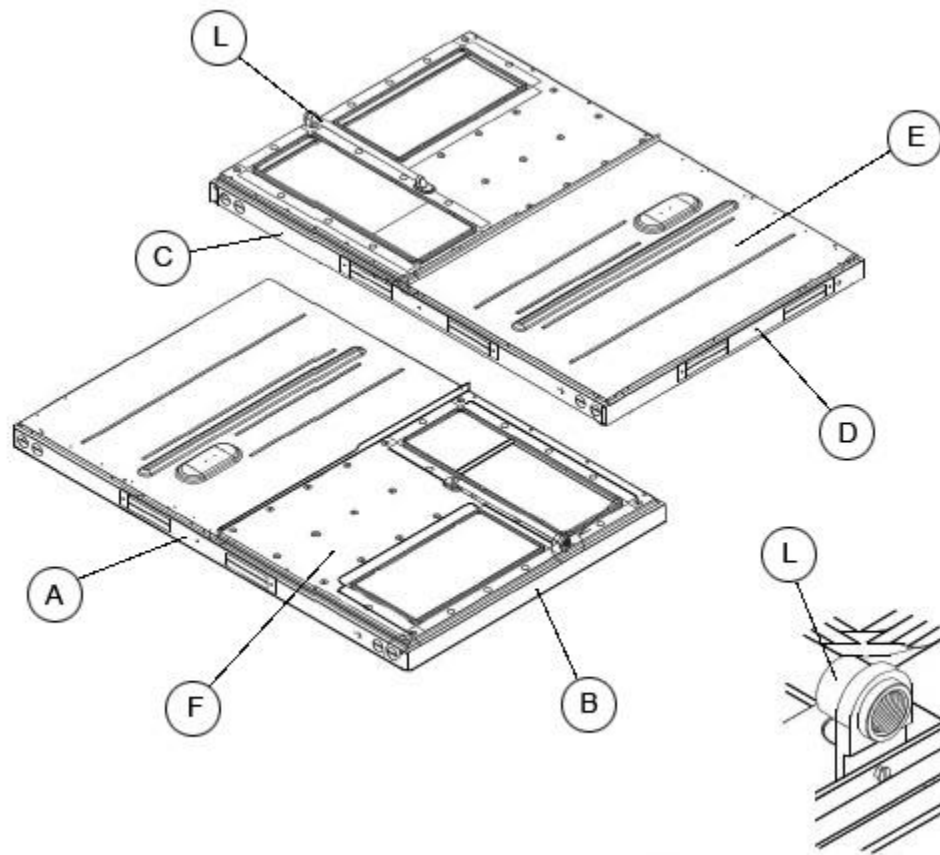
No.	Notes	MODEL TECHNICAL VARIATION COOLING CAPACITY/MAJOR SERIES	RGED ALL ALL
ACCESSORIES			
		Louver Panel Kit (Short Cabinet)	RXRX-AAD04A
		Louver Panel Kit (Tall Cabinet)	RXRX-AAD04B
		Manual Fresh Air Damper	RXRF-ADA1
		Motorized Fresh Air Damper	RXRF-ADB1
		Motorized Fresh Air Damper (DDC)	RXRF-ADC1
		Comfort Alert (One per Compressor)	RXRX-AZ02
		Service Disconnect (Unfused)	RXRX-BP01
		Non-Powered Convenience Outlet	RXRX-BN01
		Freeze Stat Kit	RXRX-AM01
		Low Ambient Control Kit	RXRZ-A04
		Dual Enthalpy Kit	RXRX-BV01
		Dual Enthalpy Kit (DDC)	RXRX-BV02
		Carbon Dioxide Sensor (Wall Mount)	RXRX-AR02
		BACnet Communication Card	RXRX-AY01
		LonWorks Communication Card	RXRX-AY02
		Room Humidity Sensor	RHC-ZNS04
		Room Humidity and Relative Humidity Sensor	RHC-ZNS05

No.	Notes	MODEL TECHNICAL VARIATION COOLING CAPACITY	RGED ALL ALL
ECONOMIZERS			
		Economizer - Single Enthalpy (Downflow)	RXRD-01MDDAM3
		Economizer - Single Enthalpy (Horizontal)	RXRD-01MDHAM3
		Economizer - Single Enthalpy (Downflow) DDC	RXRD-01MDDBM3
		Economizer - Single Enthalpy (Horizontal) DDC	RXRD-01MDHBM3

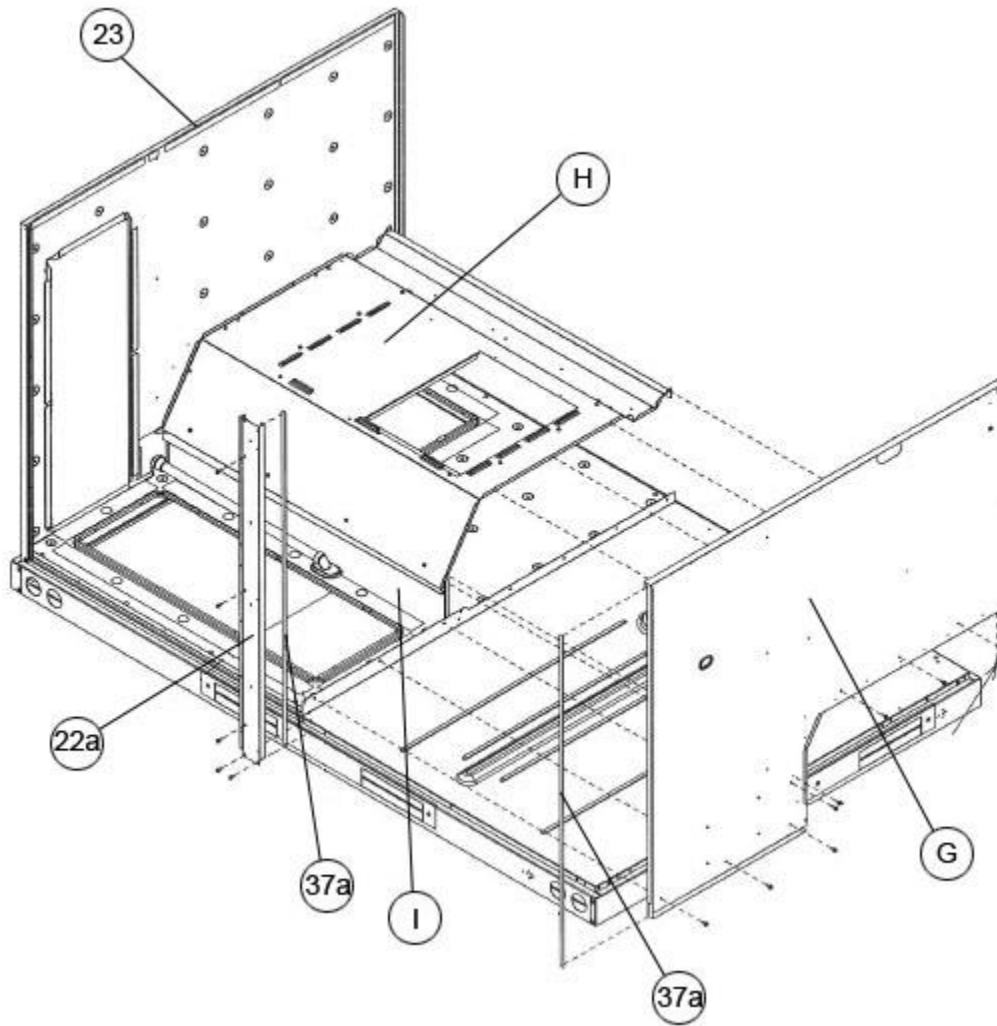
No.	Notes	MODEL TECHNICAL VARIATION COOLING CAPACITY	RGED ALL ALL
POWER EXHAUST			
		Power Exhaust	RXRX-CDF01C
		Power Exhaust	RXRX-CDF01D
		Power Exhaust	RXRX-CDF01Y

No.	Notes	MODEL TECHNICAL VARIATION COOLING CAPACITY	RGED ALL ALL
SMOKE DETECTOR			
		Smoke Detector (Return)	RXRX-BS03
		Smoke Detector (Return & Supply)	RXRX-BS04

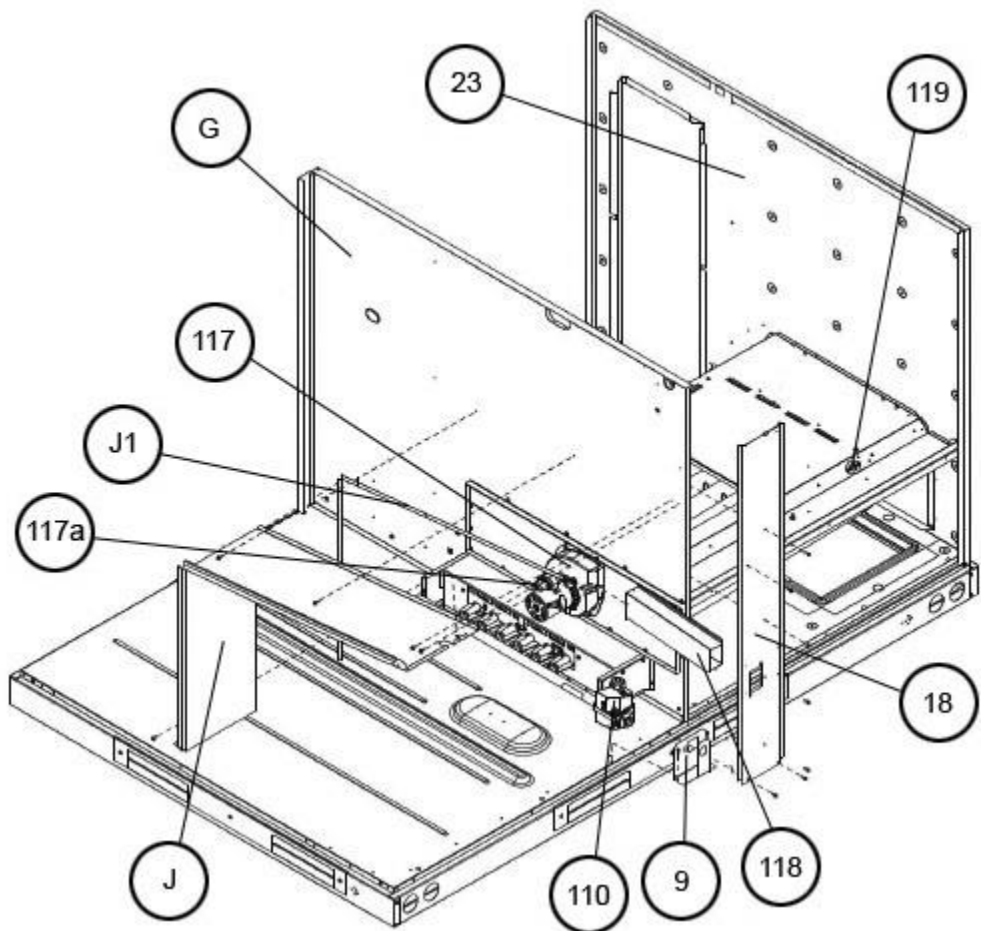
No.	Notes	MODEL TECHNICAL VARIATION COOLING CAPACITY	RGED ALL ALL
FIELD INSTALLED VARIABLE FREQUENCY DRIVE KIT			
		Variable Frequency Drive - 2 Wire Control 230V 2HP	RXRX-AC02
		Variable Frequency Drive - 2 Wire Control 230V 3HP	RXRX-AC03
		Variable Frequency Drive - 2 Wire Control 230V 5HP	RXRX-AC05
		Variable Frequency Drive - 2 Wire Control 460V 2HP	RXRX-AD02
		Variable Frequency Drive - 2 Wire Control 460V 3HP	RXRX-AD03
		Variable Frequency Drive - 2 Wire Control 460V 5HP	RXRX-AD05
		Variable Frequency Drive - Communicating 230V 2HP	RXRX-CC02
		Variable Frequency Drive - Communicating 230V 3HP	RXRX-CC03
		Variable Frequency Drive - Communicating 230V 5HP	RXRX-CC05
		Variable Frequency Drive - Communicating 460V 2HP	RXRX-CD02
		Variable Frequency Drive - Communicating 460V 3HP	RXRX-CD03
		Variable Frequency Drive - Communicating 460V 5HP	RXRX-CD05



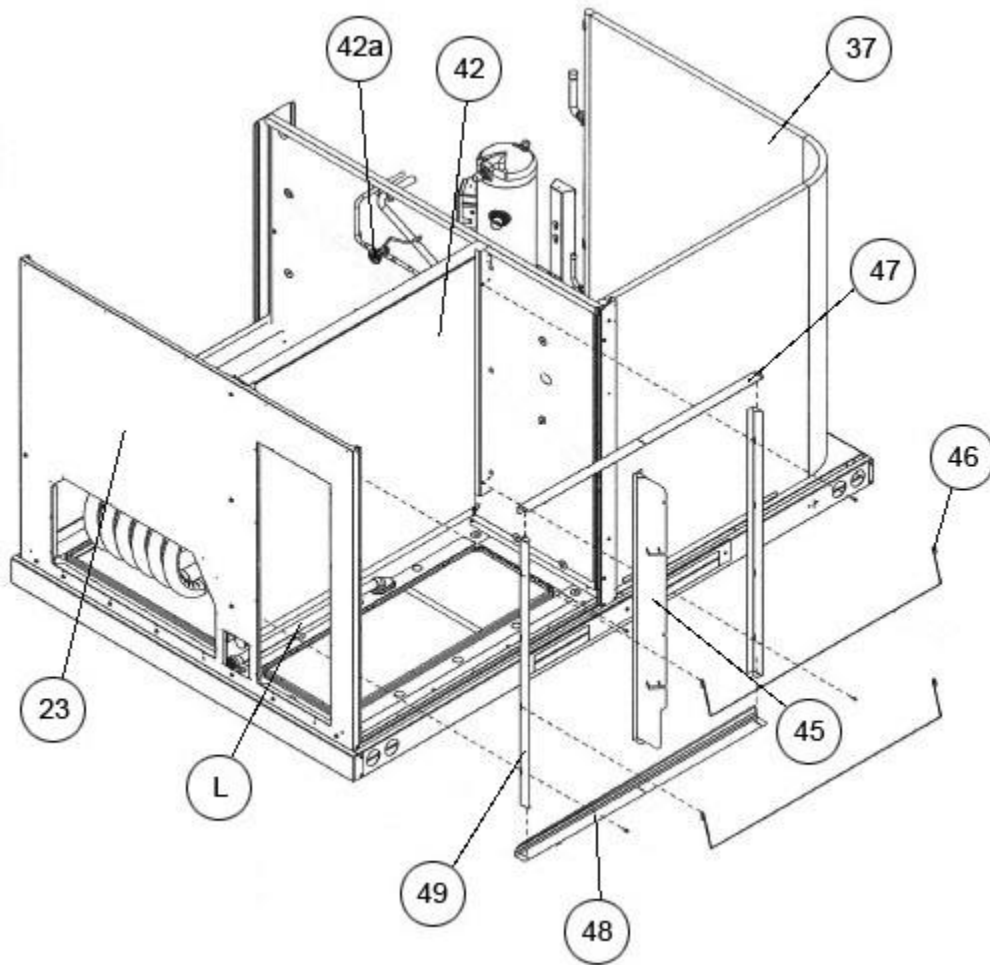
Base Assembly



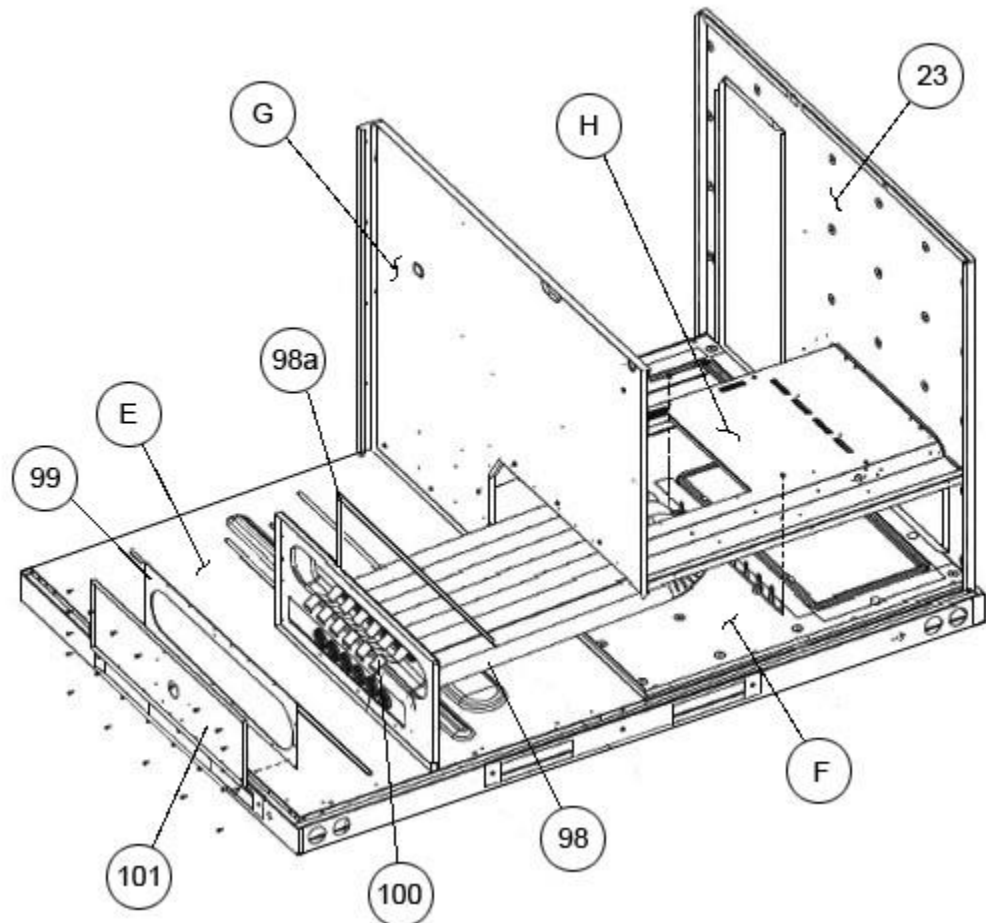
Rear Post, Bulkhead



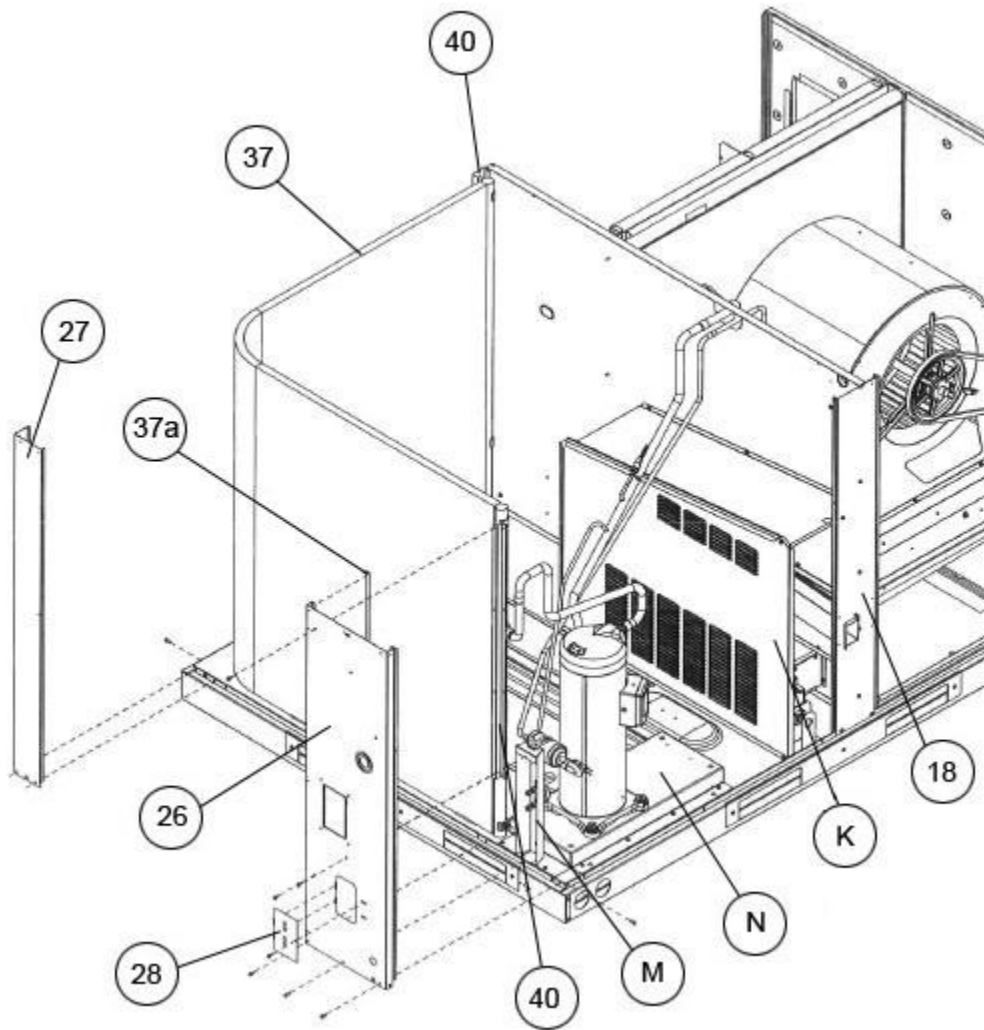
Burner Shroud, IDB



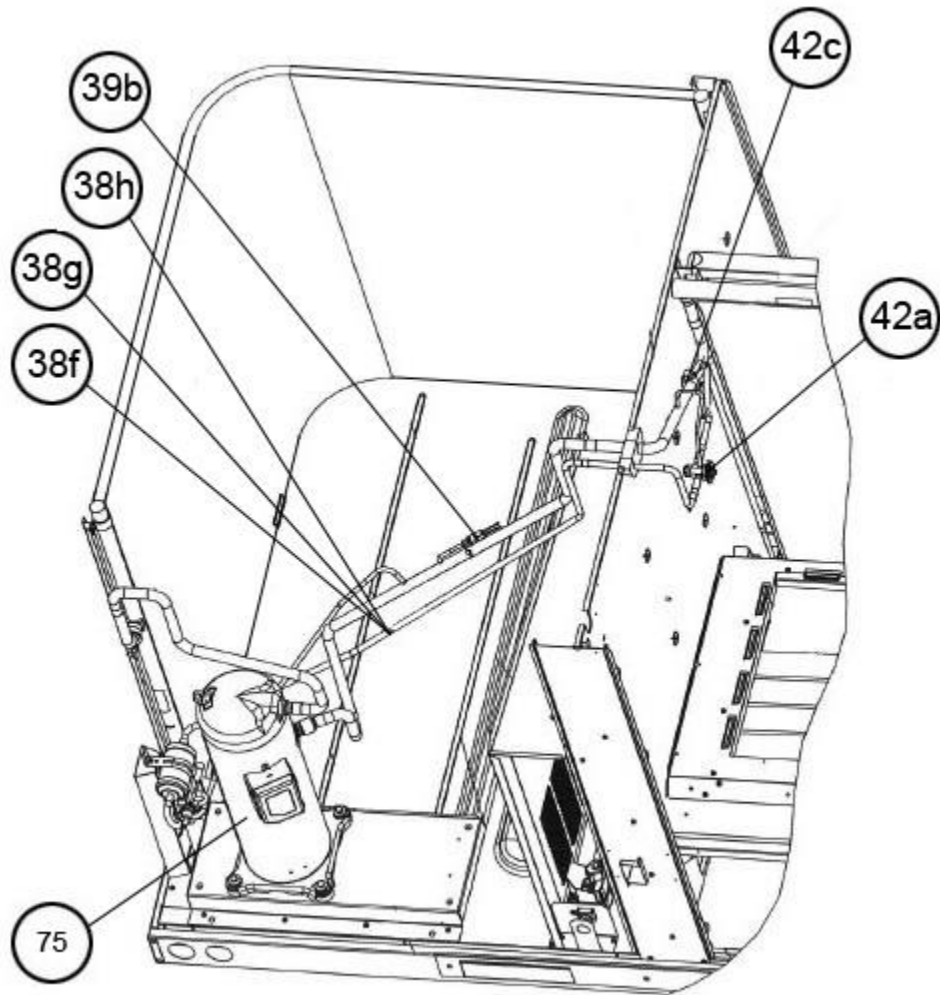
Filter Rack Assembly



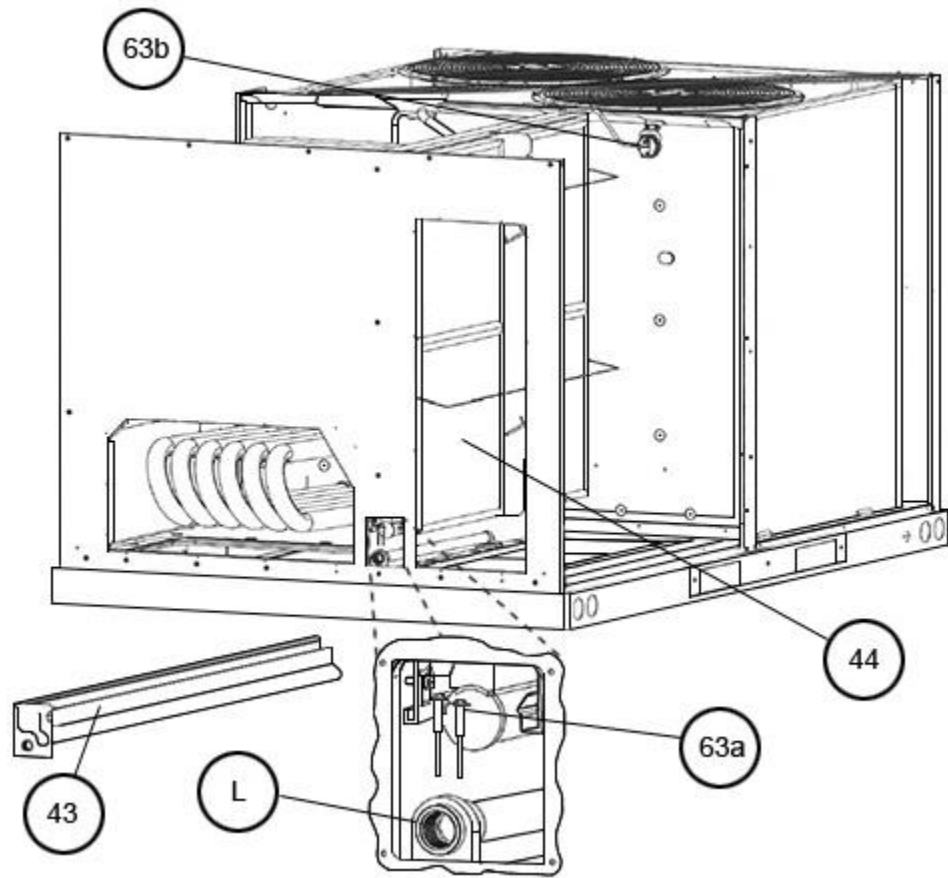
Heat Exchanger Assembly



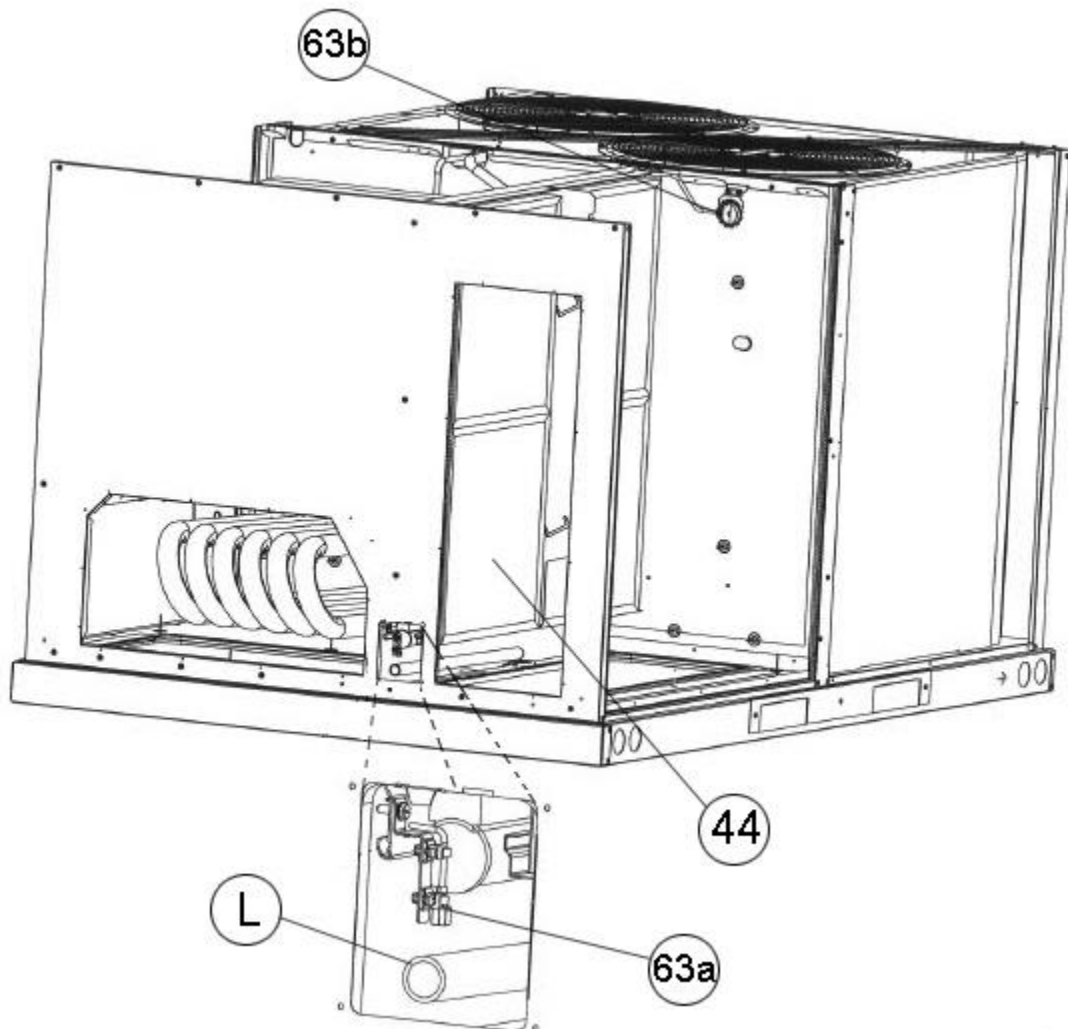
Corner Panels



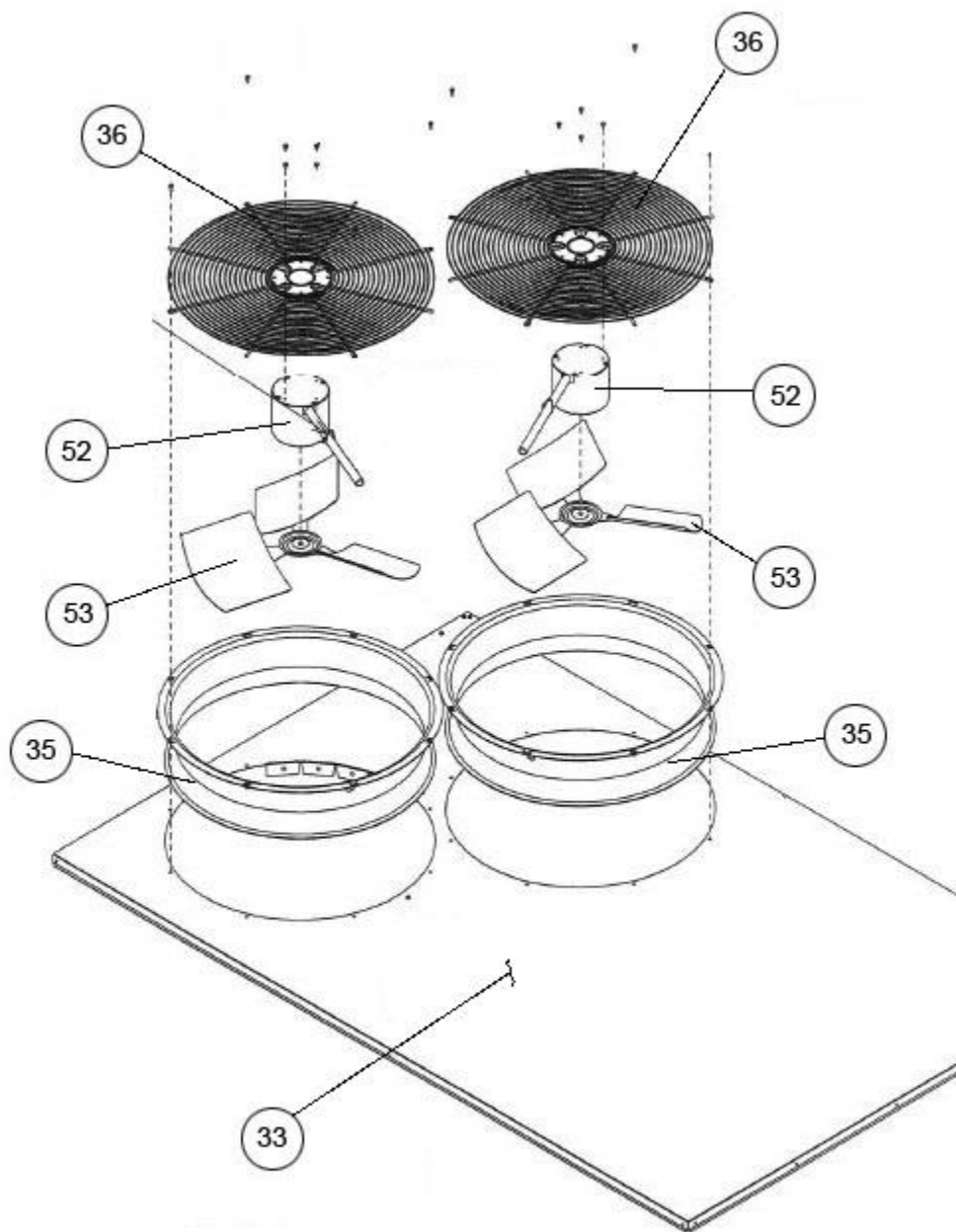
TXV, LPC, HPC



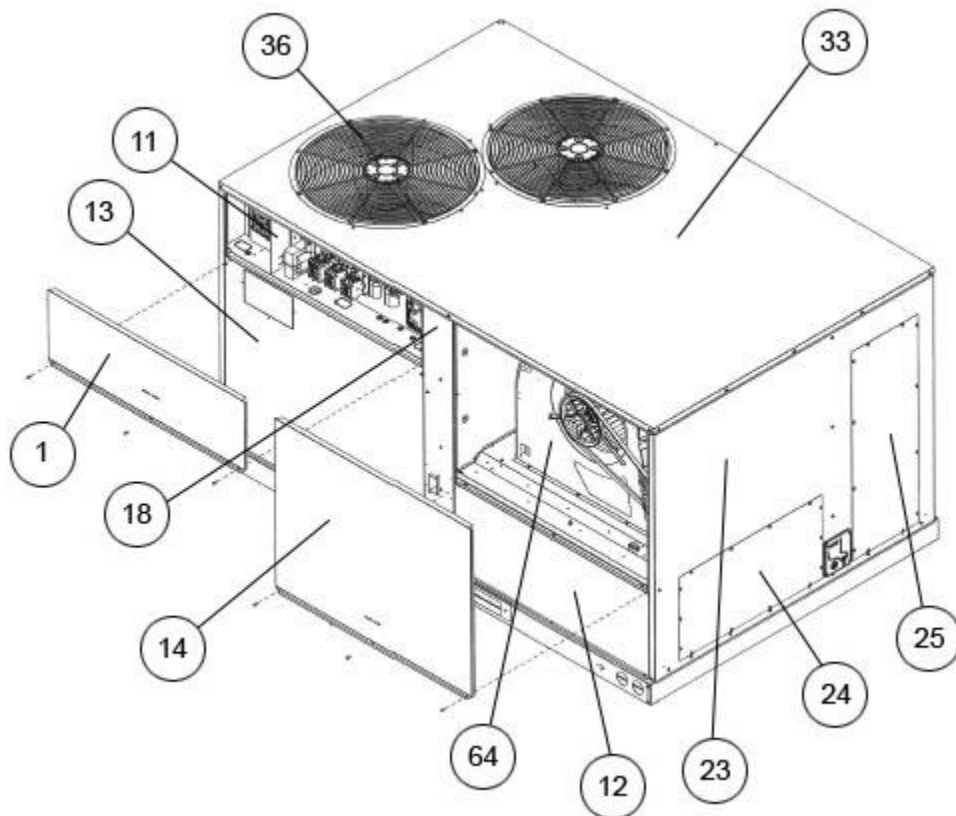
Drain-Pan, Sensor



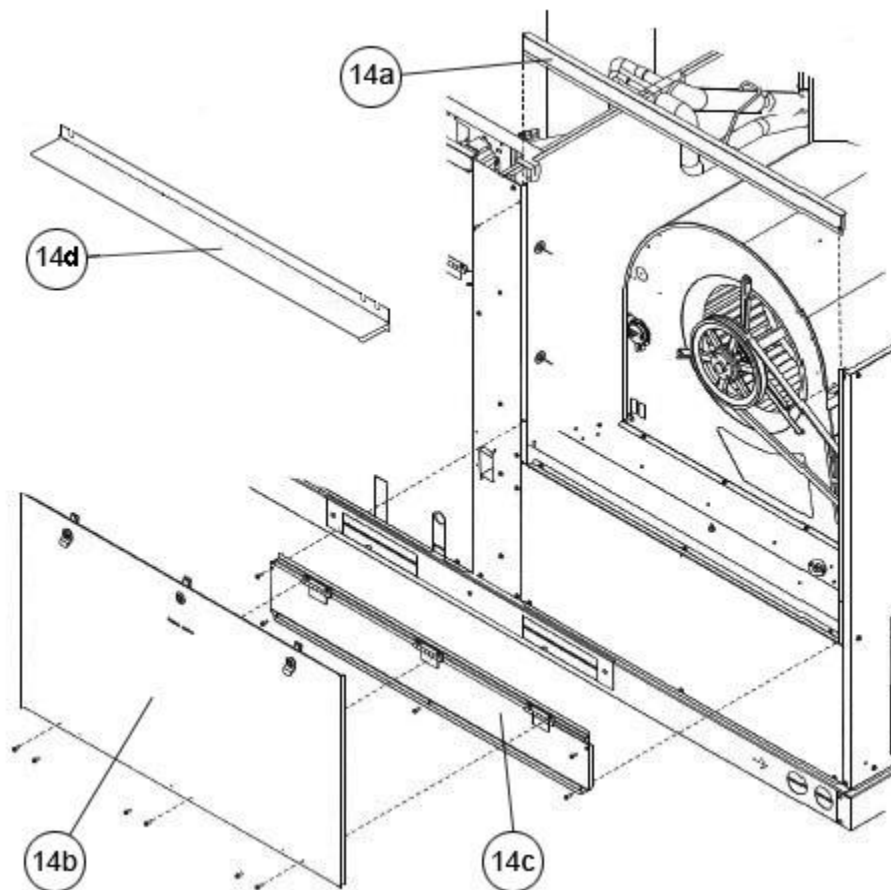
New Style Drain Sensor



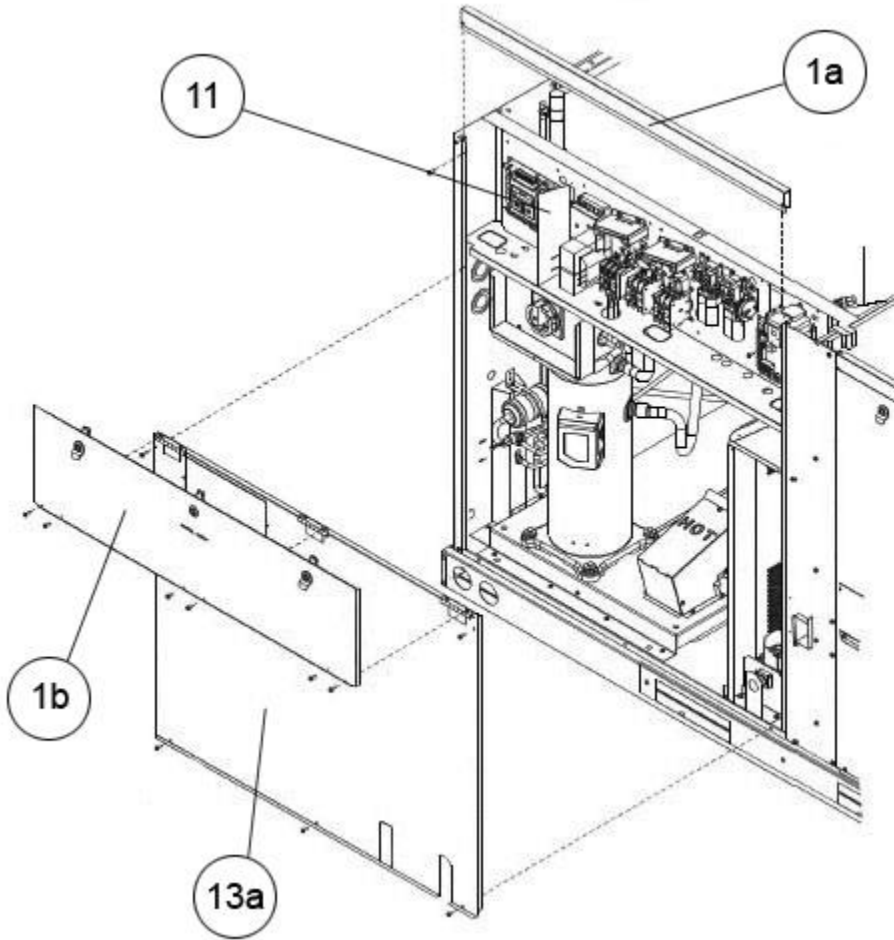
Top Panel, Grille



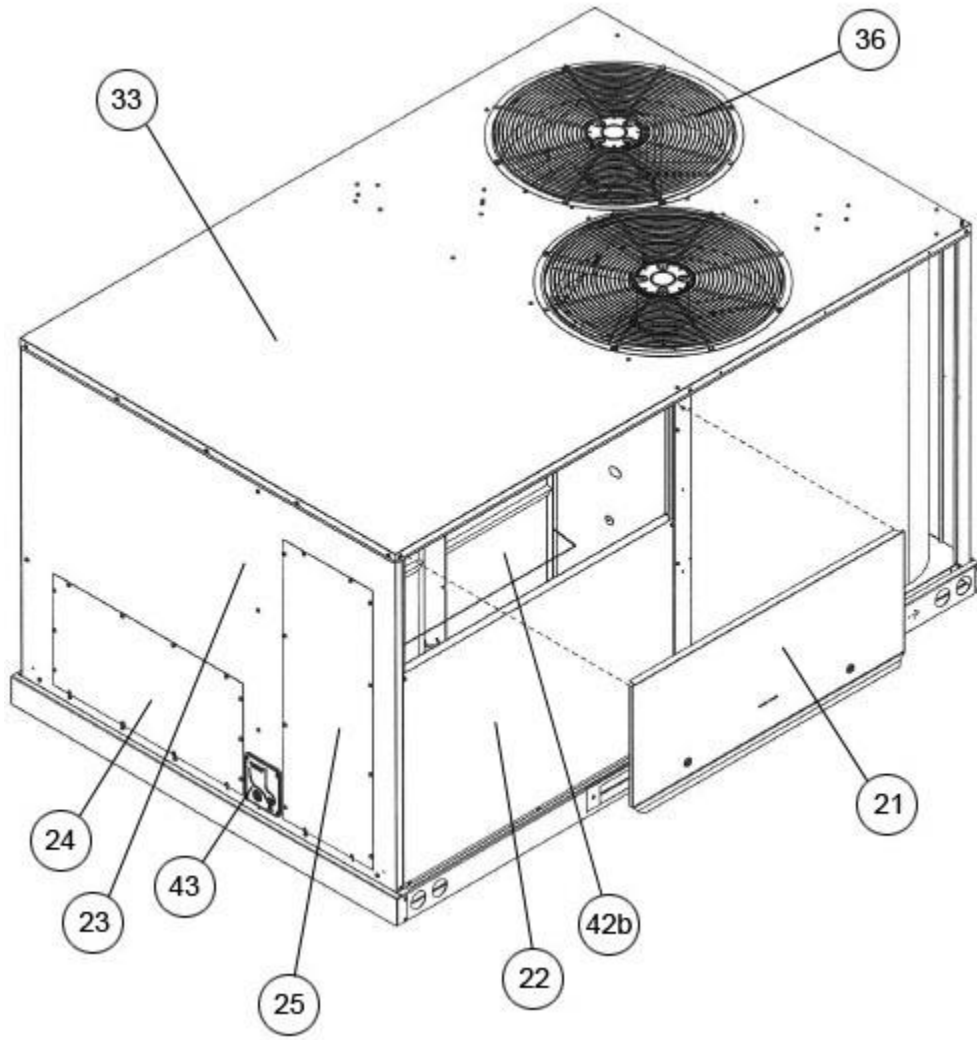
Access Panels - Front, Right



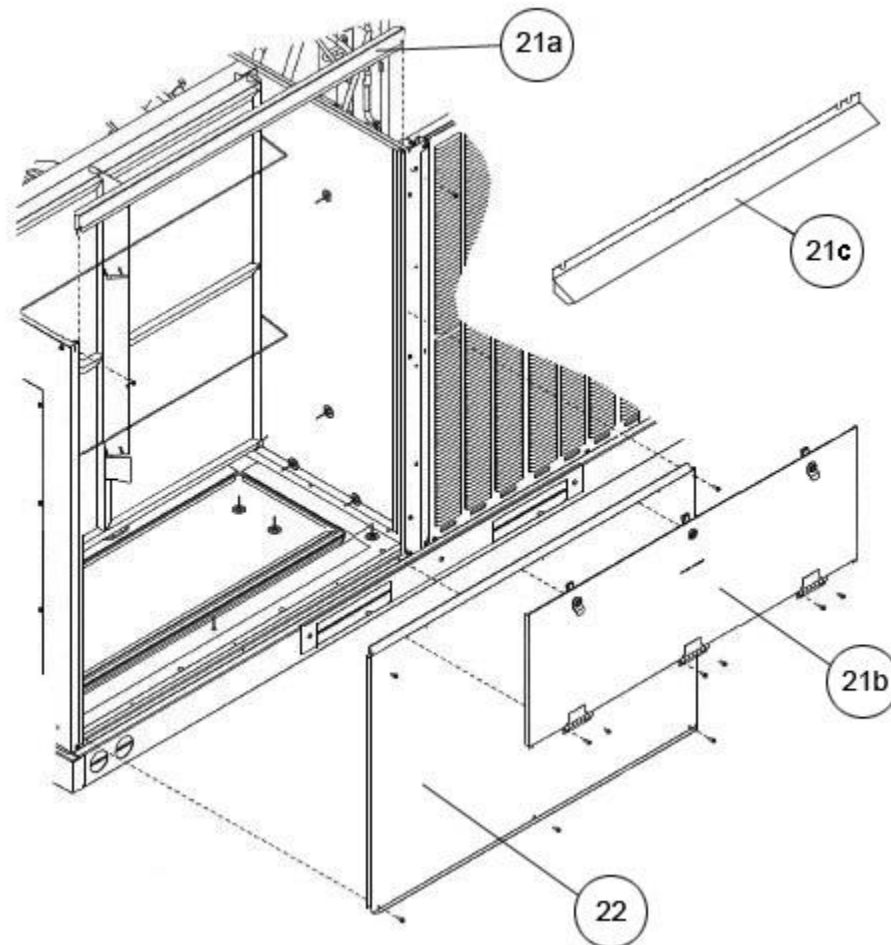
Hinged Blower Panel



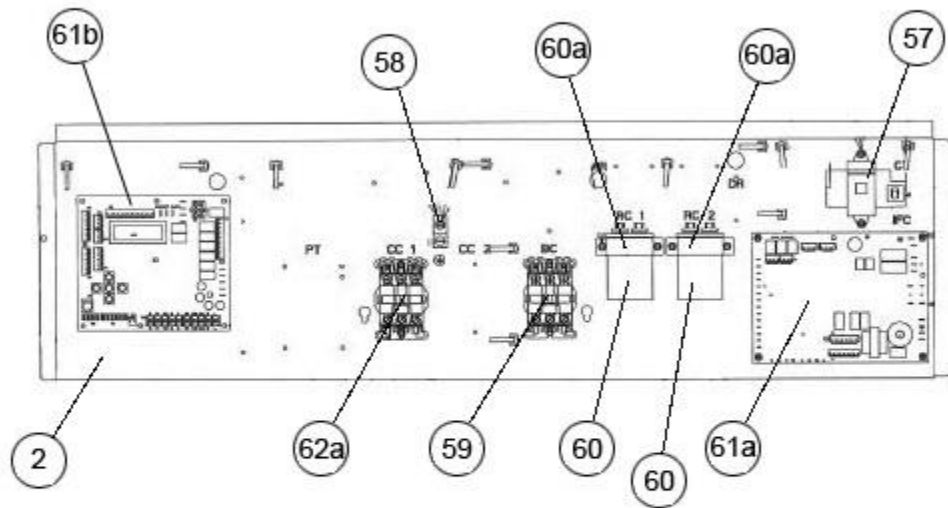
Hinged Compressor Panel



Access Panels -Back

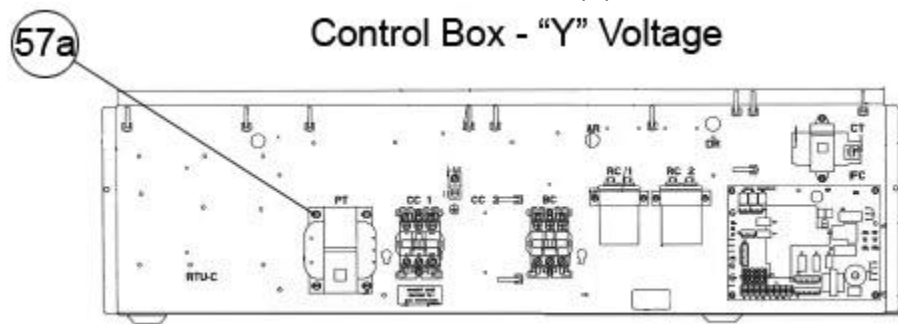


Hinged Coil-Filter Panel

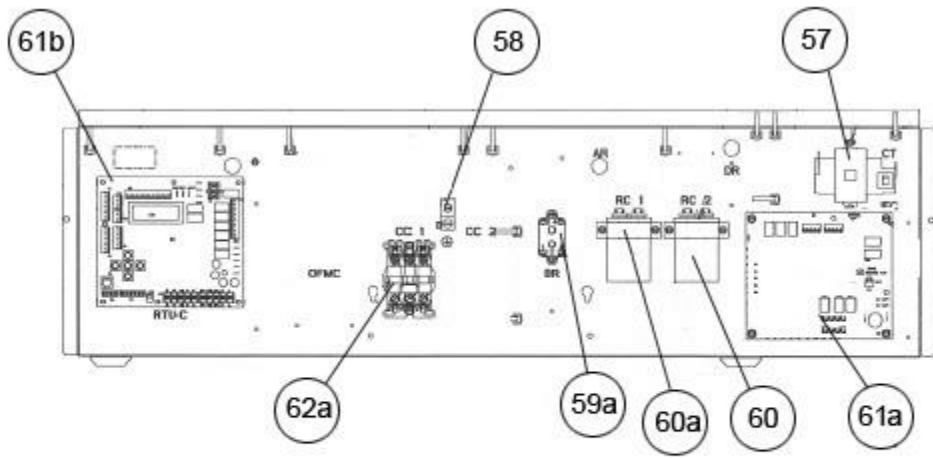


Control Box (1)

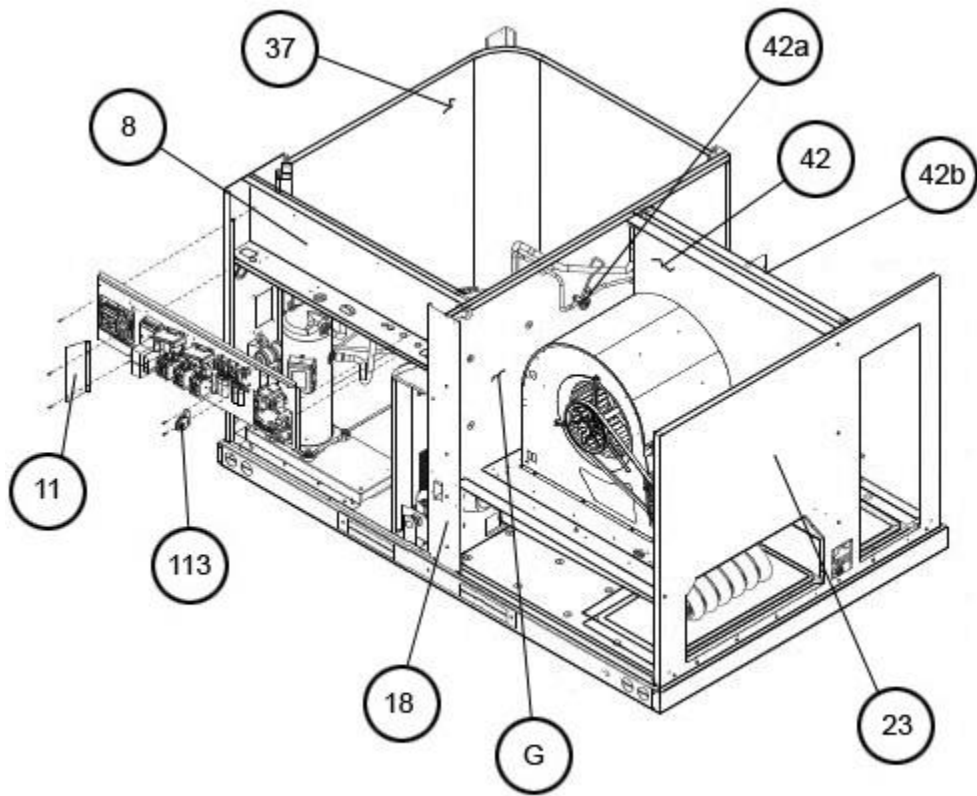
Control Box - "Y" Voltage



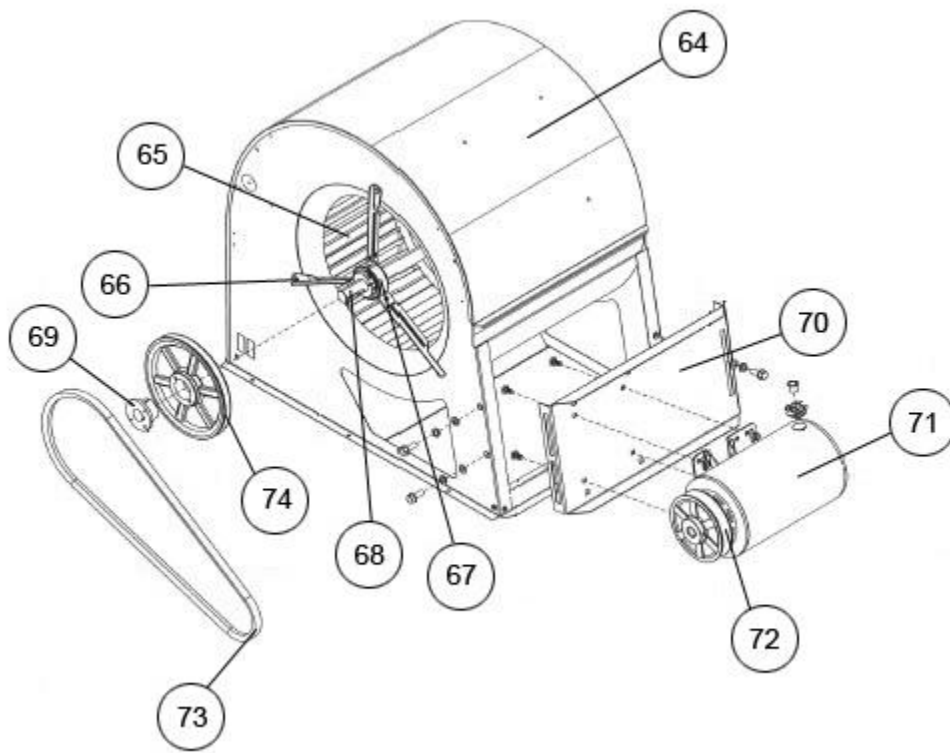
Control Box (2)



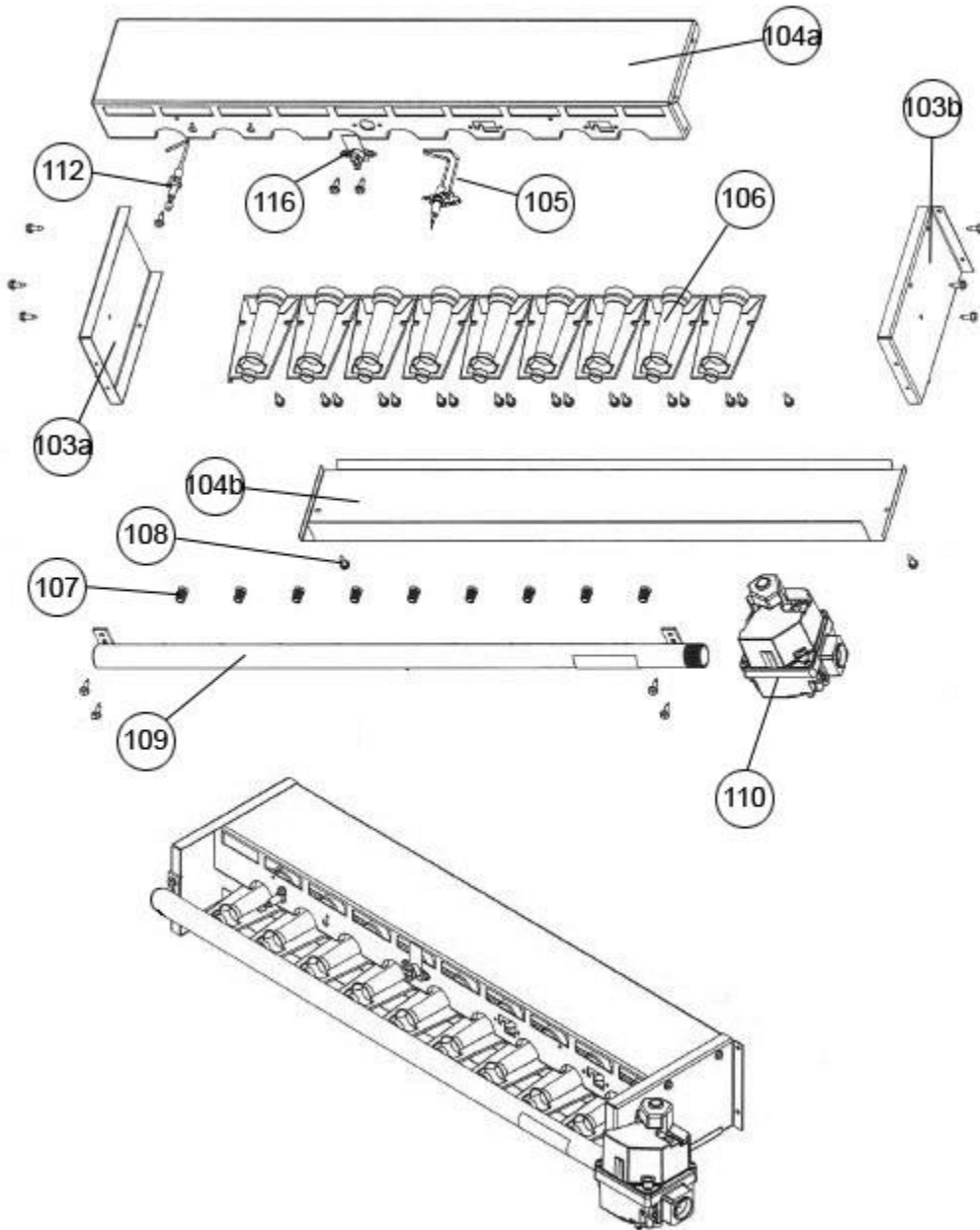
Control Box DDC VFD



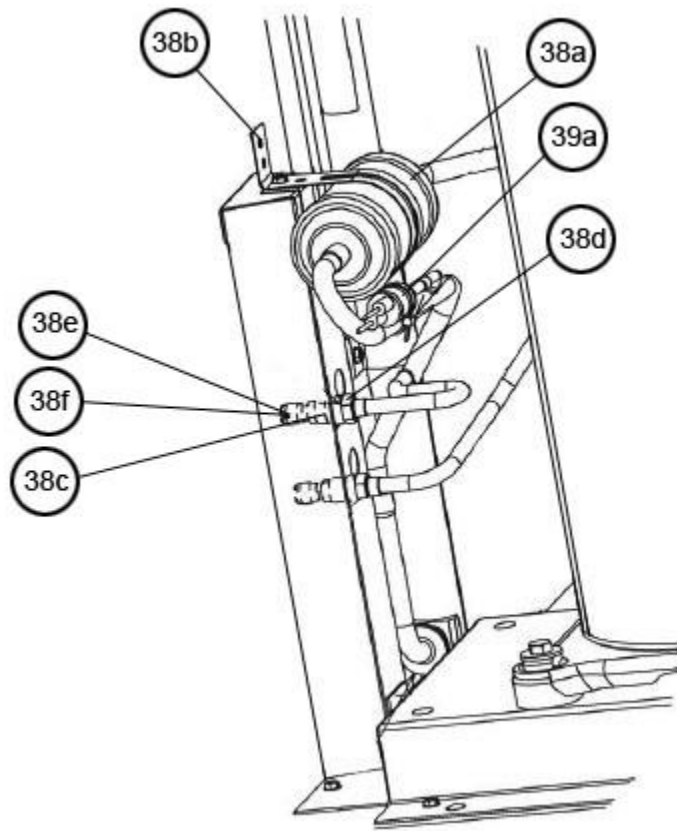
Pressure Switch, Low Voltage Shield



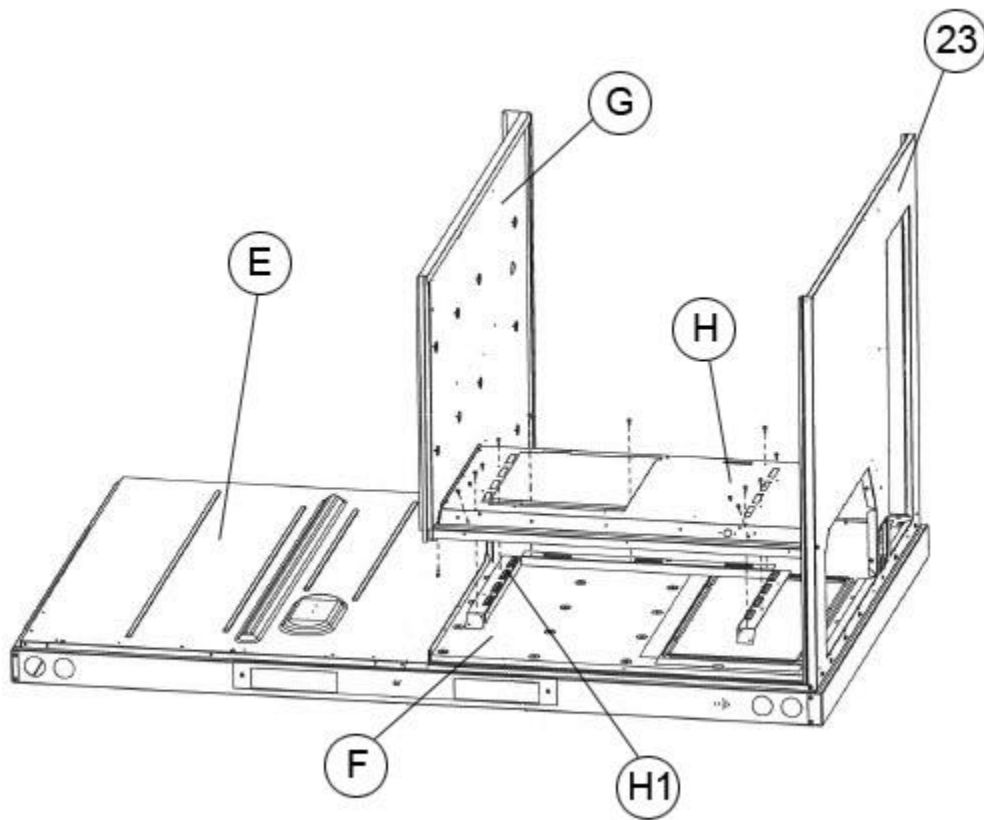
Blower Assembly



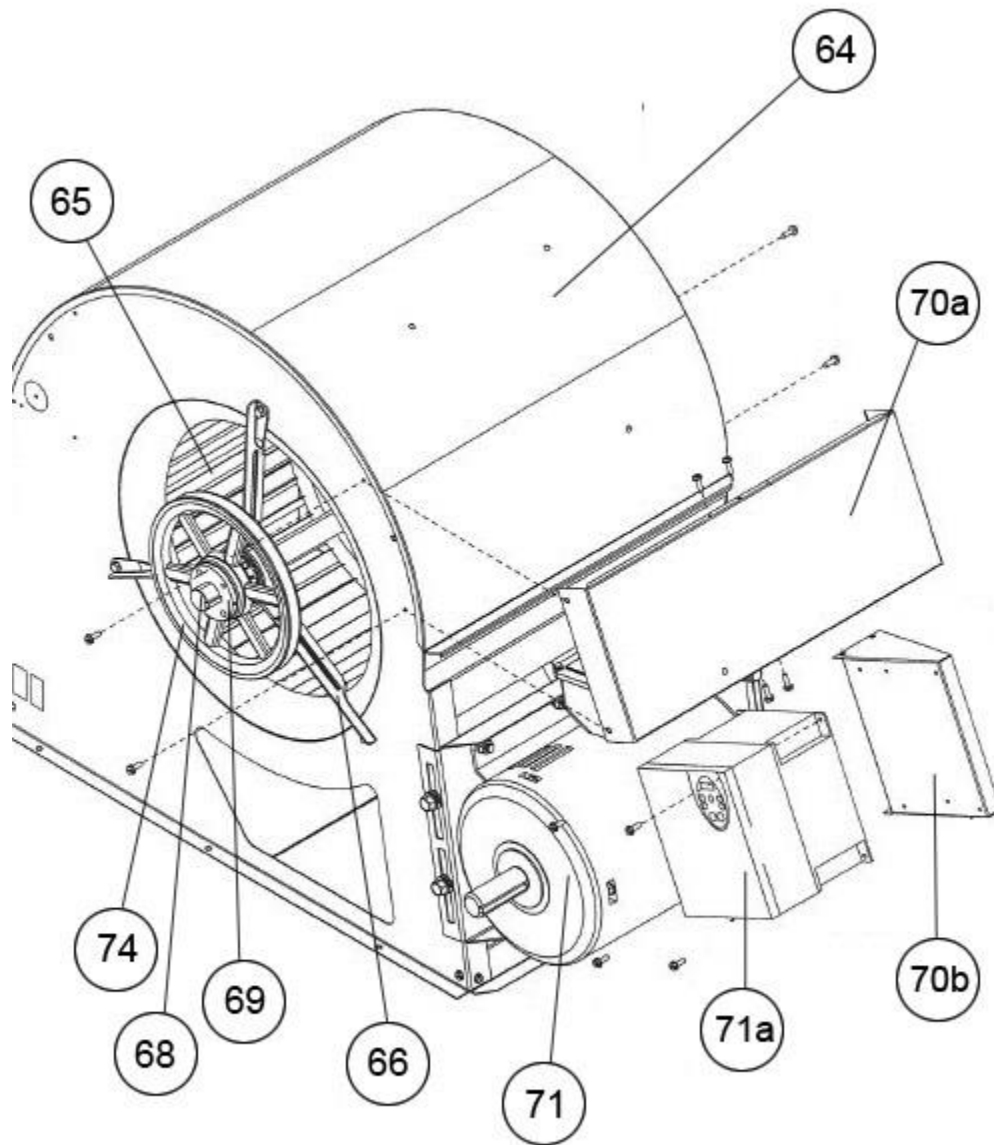
Burner Assembly



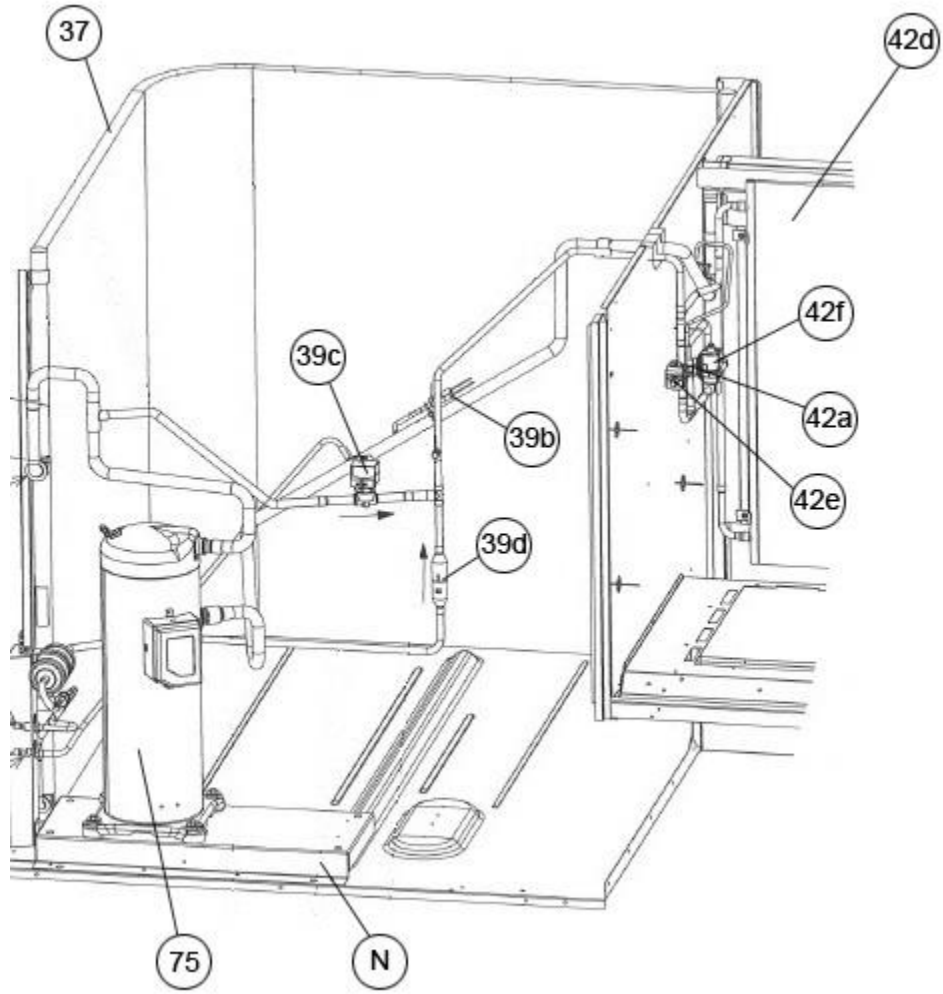
Filter Drier - HPC



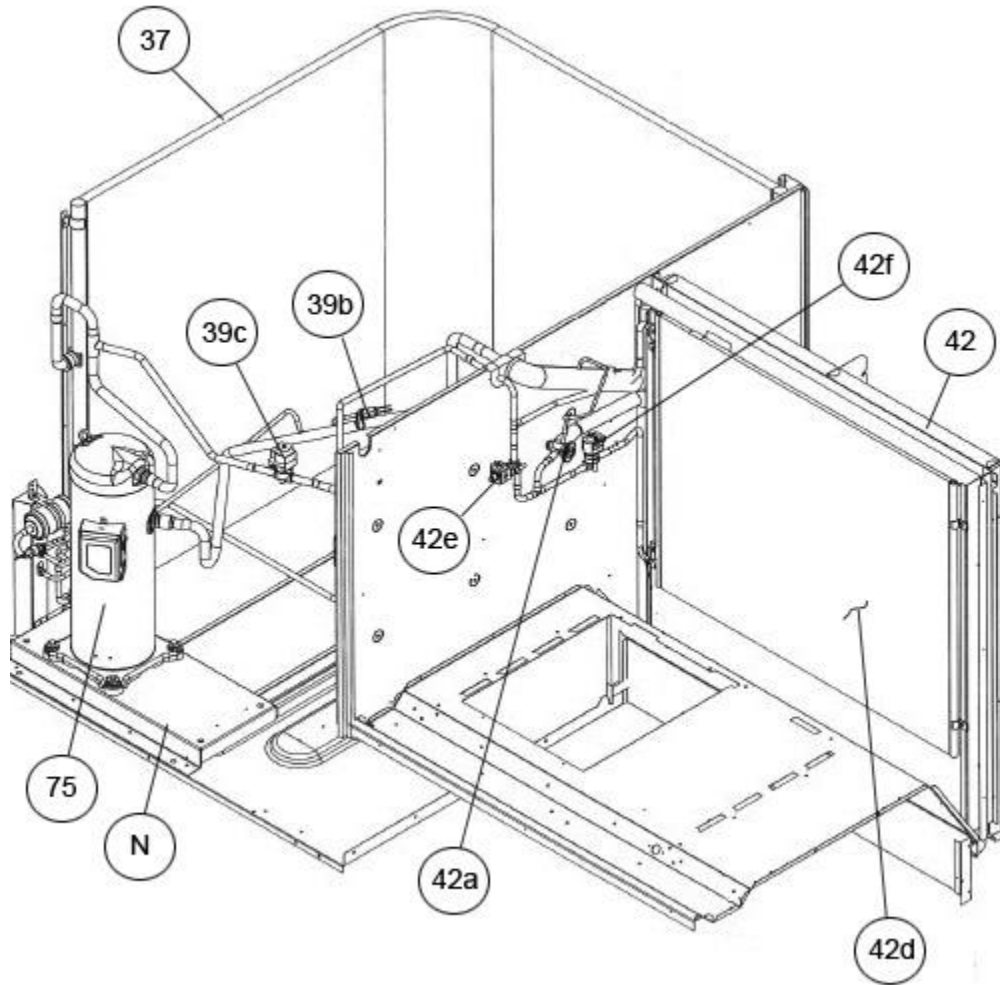
Blower Support Wrap



VFD Mounting



Reheat



Reheat Coil

NOTES

Stk It is recommended that stock be maintained for this part.

N/A Not Applicable

- 1 Order Gas Valve for Natural Gas along with LP Conversion Kit.
- 2 Order the specified LP Conversion Kit.
- 3 No wiring harness is available. Compressor Wiring is 'Point-to-Point'.