



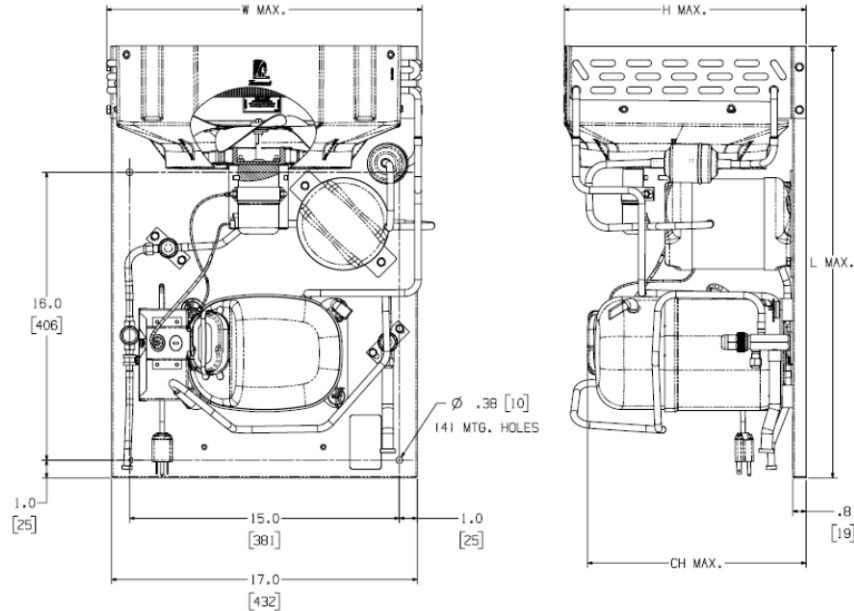
# Celseon® Air Cooled Condensing Unit

Model: AJA4512ANAD\*

BoM: 2G1020-\*\*

R-12

1 HP



Model	Dimensions, inches				Line Connection*		Pumpdown	Air	Oil Ch	Gr. Wt.
	L	W	H	CH	Suction	Liquid	90 °F 90%	SCFM	Oz.	Lbs.
AJA4512ANADA	24.0	17.6	13.4	11.8	3/8" S	3/8" S	N/A	270	22	76
AJA4512ANADG					5/8" S	3/8" S	7.8 lbs			77
AJA4512ANADH					5/8" S	3/8" S	N/A			76
AJA4512ANADK					3/8" S	3/8" S	N/A			76
AJA4512ANADC					5/8" S	3/8" S	7.8 lbs			77
AJA4512ANADS					5/8" S	3/8" S	N/A			76
AJA4512ANADJ					5/8" S	3/8" S	7.8 lbs			78
AJA4512ANADP					5/8" S	3/8" S	7.8 lbs			78

\* F = Flare, S = Solder, RF or RS = Rotolock with Flare or Solder Connections, C = Compression Fitting  
Factory charge: 20 PSIG Nitrogen – **MUST BE EVACUATED**

Evaporator T,		Ambient Temperatures								
		90°F			100°F			110°F		
°F	PSIG	BTUH	Watts	Cond T	BTUH	Watts	Cond T	BTUH	Watts	Cond T
20	21.0	7400	1250	118	7050	1290	127	6700	1330	135
25	24.6	8200	1340	121	7800	1380	130	7400	1415	138
30	28.5	8900	1430	123	8600	1470	132	8000	1505	140
40	37.0	10780	1620	127	10200	1660	137	---	---	---
45	41.7	11780	1725	130	11150	1765	138	---	---	---
50	46.7	12780	1830	131	12150	1880	139	---	---	---

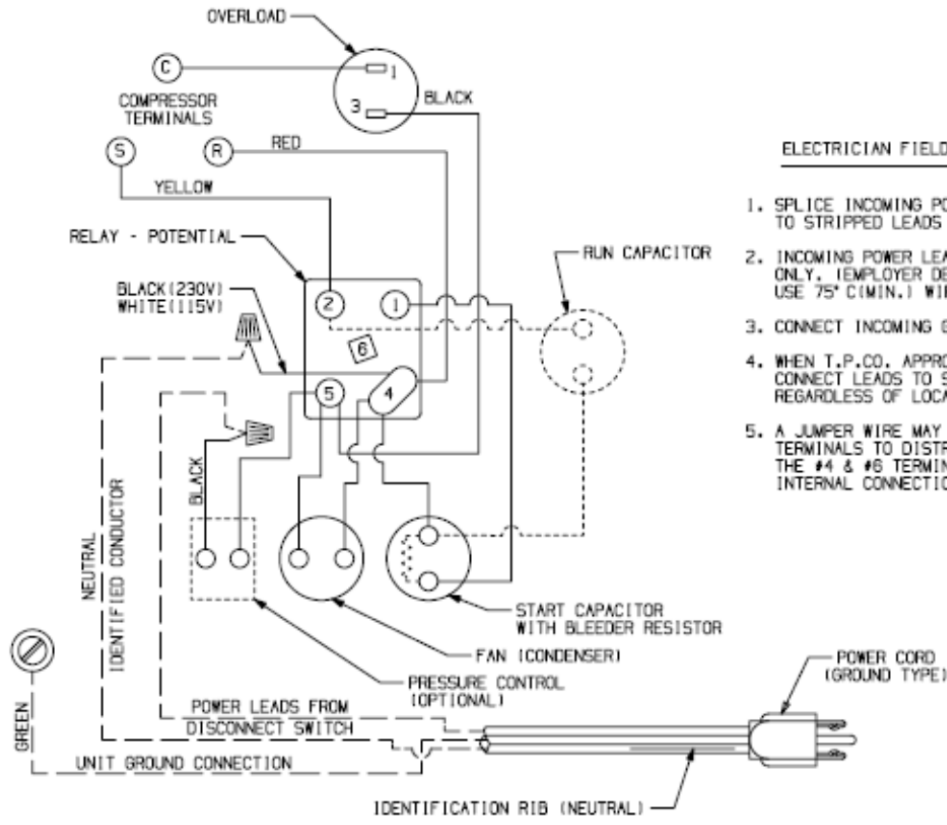
## 60 Hz Performance

Return gas temp. 65°F, 5°F sub cooling



## Electrical Diagram Page 3

CHG. B	PART NO. 91266-02
-----------	----------------------



ELECTRICIAN FIELD WIRING AND INSTRUCTIONS

1. SPLICE INCOMING POWER LEADS, FROM DISCONNECT SWITCH, TO STRIPPED LEADS IN THIS ENCLOSURE.
2. INCOMING POWER LEADS MUST BE COPPER CONDUCTORS ONLY. (EMPLOYER DES CONDUCTEURS DE CUIVRE SEULEMENT.) USE 75° C (MIN.) WIRING.
3. CONNECT INCOMING GROUND LEAD TO GREEN SCREW.
4. WHEN T.P.CO. APPROVED ALTERNATE RELAY IS USED, CONNECT LEADS TO SAME NUMBERED TERMINALS, REGARDLESS OF LOCATION.
5. A JUMPER WIRE MAY BE CONNECTED BETWEEN #4 & #6 TERMINALS TO DISTRIBUTE WIRES FOR EASE OF WIRING. THE #4 & #6 TERMINALS ARE WIRING TERMINALS WITH NO INTERNAL CONNECTIONS TO RELAY.