

**F402-3****FLUSHBOY****WATER SAVER FLUSH VALVE**  
( 3.5gpf / 13.2 Lpf Per Flush )

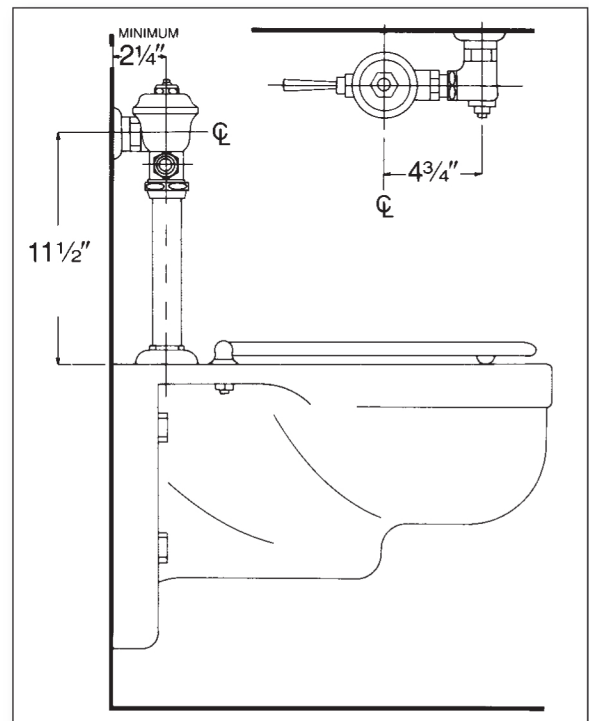
**P**olished chrome plated flush valve, chloramine resistant diaphragm, 3.5 gallons per flush, externally adjustable, with 1" vandle resistant capped screwdrive angle stop with back-check, renewable main valve seat, metal "Rubberflex" oscillating handle, "Turn-to-Silence" equipment, with "Kwik-fit" threaded union tailpiece, vacuum breaker, wall flange, spud nut and spud flange for 1½" top spud.

**Variations**

- ☐ G – Bumper on angle stop (for seat without cover)
- ☐ O – Flush connection for 1¼" spud
- ☐ T36 – Solid ring wall support for flush connection
- ☐ T42 – Sweat adapter kit for stop
- ☐ T46 – Split ring wall support for flush connection
- ☐ T106 – Mashaerator self cleaning bypass diaphragm

**Remarks**

**\* For use with 3.5 gallons water saver water closet**



P.O. Box 411 • Charlottesville • VA • 22902 • USA  
 Phone: (434) 296-0166 • Fax (434) 977-3596  
 Email: info@delanyproducts.com  
 Web: www.delanyproducts.com  
 ©2014

