



# **AK INDUSTRIES**

## **POLY SUMP & SEWAGE BASINS**



**SERVING THE WASTEWATER INDUSTRY SINCE 1981**

[WWW.AKINDUSTRIES.COM](http://WWW.AKINDUSTRIES.COM)



# AK INDUSTRIES, INC.

## TABLE OF CONTENTS

## PRODUCT

## PAGE



POLY PRO BASINS

03



ROLL TOP BASINS

04



CORRUGATED BASINS

05



SIDE VENT EJECTOR BASIN

06



RIBBED BASIN

07



POLY BASIN EXTENSIONS

08



COVERS

09



UNIVERSAL COVER

10



BASIN ACCESSORIES

11



ADAPTAFLEX SERIES

12



ADAPTAFLEX INSTRUCTIONS

13



PUMP JON

14



WATER BOXES

15



SINK TRAY

16



TRIPLE GARAGE SYSTEM

17



RADON PREVENTION

18



PROPER INSTALLATION

19



QUALITY & WARRANTY

20



LIST OF ALL POLY PRODUCTS

21

## A MESSAGE TO OUR CUSTOMERS

Dear Customer,

We are pleased to present to you our latest catalog of Poly Sump & Sewage Basins and accessories. We have continuously improved our existing product lines while adding new products year after year.

Improvements have come from redesigning products, such as the triple-garage basin or investing in new machinery to more efficiently and cost-effectively produce our basins. Our products are quickly becoming the universal standard for the wastewater industry, such as our "Poly Pro" line of basins or our flexible grommets "Adapt-a-Flex" product line.

Our company has been in business since 1981. In those 35 years since my brother and I founded AK Industries, we have learned that in order to be successful and remain successful, a business must meet the following criteria.

First, a top quality line of products would need to be provided to the industry with consistent engineering and product detail.

Second, we must dedicate ourselves to providing reliable customer service that can respectfully solve problems by educating customers on products. This saves them time and money. We have invested in our employees, and our employees have proven indispensable to our success because of their knowledge and service to the customer.

Lastly, we understand that in order to be successful, we must offer products that provide the best value to the customer. It's not a matter of having the most expensive or the cheapest product on the market. It's a matter of having the product that delivers the biggest value to your customers.

Whether you are a new customer, or an existing customer, we want to extend our gratitude for choosing AK Industries. We can't wait to prove to you that we offer "The Best Around Underground" in the sump & sewage basin industry. We realize our next 35 years of business will depend on continued commitment to product quality, innovating existing products, and providing quality customer service.

Let us prove to you why we are still

***"The Best Around Underground!"***

Stephen A. Sabo

# "THE BEST AROUND UNDERGROUND"

*For over 35 years as a manufacturer, we have responsibly mitigated our waste and environmental impact through advanced in-house recycling programs, waste management systems, and even replacing every light bulb across our 250,000 sq. ft of manufacturing space with high efficiency lighting.*

*We are a manufacturer of technologies that are designed to protect the environment, so it is paramount that our company responsibly and sustainably handle our waste and our environmental impact.*



Submersible Wastewater  
Pump Association



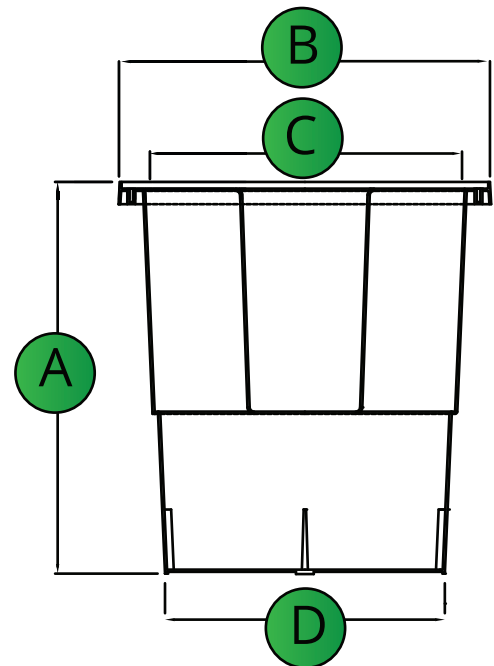
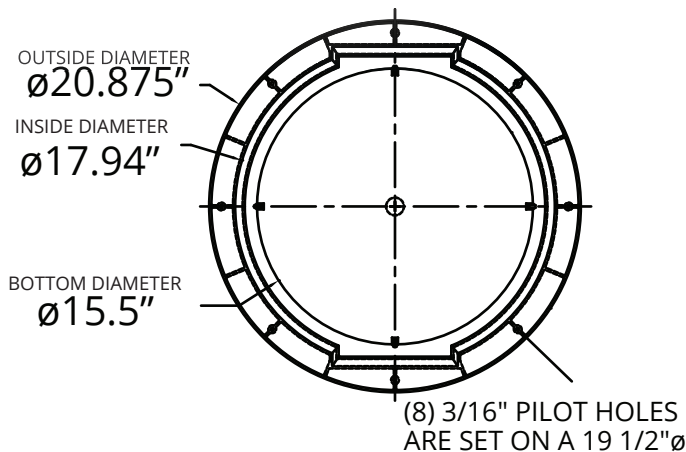


# POLY PRO SERIES

The Poly Pro Series 18x22" is an injection molded, polyethylene sump basin that offers a true 22 gallon capacity coupled with the ability to accept a variety of fittings and covers, which makes this the perfect basin for your installation.



<b>MATERIAL</b>	High Quality High Density Polyethylene (HDPE)
<b>WEIGHT</b>	AKP35000 – 18X22 – 7 lbs
	AKP38000 – 18X30 – 8.5 lbs
<b>VOLUME</b>	AKP35000 – 22 Gallons
	AKP38000 – 30 Gallons
<b>WALL THICKNESS</b>	0.188"
<b>WARRANTY</b>	One year
<b>DETAILS</b>	
<ul style="list-style-type: none"><li>• Accepts up to 4" Adaptaflex, PVC Hubs, &amp; Cast Iron Hubs</li><li>• Reinforced, recessed flange</li><li>• Max temperature: 140 degrees F</li><li>• See Covers page for available cover configurations &amp; sizes</li><li>• Accepts plate with pump feet</li><li>• Optional pump locator pockets</li></ul>	



PART NUMBER FAMILY	INTERNAL DIAMETER x HEIGHT (in)	CAPACITY (US GALLONS)	WEIGHT (US POUNDS)	WALL THICKNESS (in)	DIMENSIONS (in)			
					A	B	C	D
AKP35000	18 X 22	22	7.0	0.188	22.00	20.88	17.94	15.75
AKP38000	18 X 30	30	8.5	0.188	30.00	21.00	17.94	15.75



# ROLL TOP POLY BASIN

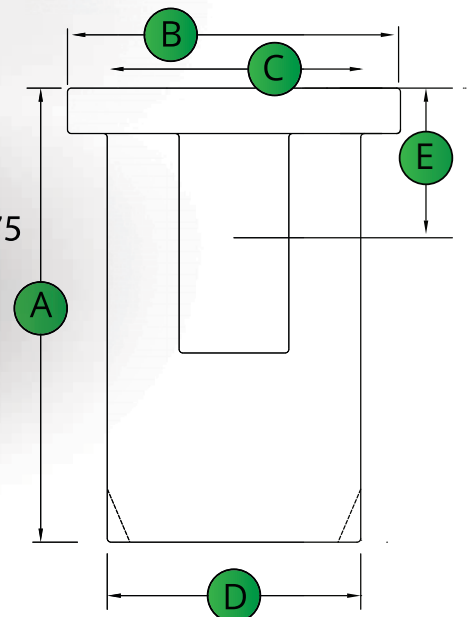
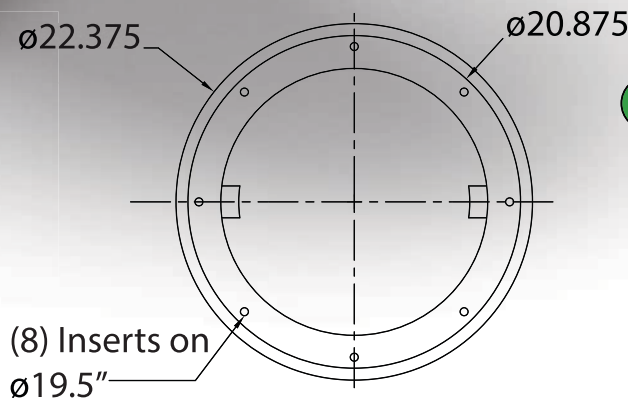
The Roll Top Basin Series is a rotationally molded, polyethylene sump basin that offers gallon capacities from 22 to 159 gallons in our 36"x36" design. These basins also accept a wide variety of fittings and steel or structural foam covers.



<b>MATERIAL</b>	Hexene Copolymer of Linear Low Density Polyethylene
<b>WEIGHT</b>	10 lbs to 45 lbs
<b>VOLUME</b>	22 to 159 Gallons
<b>WALL THICKNESS</b>	0.125", 0.25", 0.3125"
<b>WARRANTY</b>	One year
<b>DETAILS</b>	
<ul style="list-style-type: none"> <li>Accepts up to 4" Adaptaflex, PVC Hubs, &amp; Cast Iron Hubs</li> <li>Reinforced, recessed flange</li> <li>Max temperature: 140 degrees F</li> <li>See Covers page for available cover configurations &amp; sizes</li> <li>Accepts plate with pump feet</li> <li>Optional pump locator pockets</li> </ul>	



Our unique molded insert design allows for tight cover fits while also protecting screws from concrete and corrosion.



PART NUMBER FAMILY	INTERNAL DIAMETER x HEIGHT (in)	CAPACITY (US GALLONS)	WEIGHT (US POUNDS)	WALL THICKNESS (US INCH)	DIMENSIONS (in)				
					A	B	C	D	E
AKP50000	14x24	12	12	0.125	24.5	16.375	13.5	12.25	n/a
AKP30000	18x22	22	10	0.125	24.5	22.5	17	14.5	11
AKP30070	18x30	30	17	0.25	32.8	22.5	18.3	17	13.5
AKP30200	24x24	48	22	0.25	25.5	30.5	24	24	13.5
AKP30230	24x30	59	24	0.25	33	30.5	24	24	13.5
AKP30260	24x36	71	26	0.25	39	30.6	24	24	13.5
AKP30290	30x36	110	35	0.3125	38.5	36.5	29	29	13.5
AKP30320	36x36	159	45	0.3125	38.5	42.8	36	36	13.5





# CORRUGATED SUMP BASINS

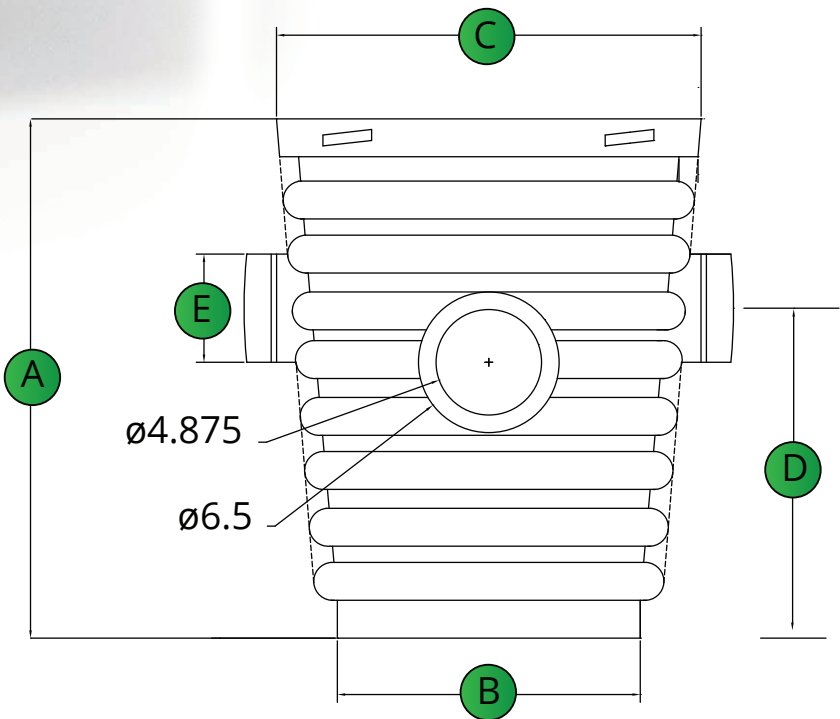
The Corrugated Sump Basin is an injection molded, polyethylene sump basin that offers added strength through its ribbed design. It also features perforated knock outs for easily plumbing and installing the basin.



MATERIAL	High Quality High Density Polyethylene (HDPE)
WEIGHT	7 lbs
VOLUME	14 gallons
WALL THICKNESS	0.188"
WARRANTY	One year
DETAILS	
<ul style="list-style-type: none"><li>• Accepts up to 4" corrugated pipe</li><li>• Only accepts AK slotted cover (#AKP60140)</li><li>• Max temperature: 140 degrees F</li><li>• Sump pit applications only, unsuitable for external installation</li><li>• Allows cover rotation</li><li>• Standard according to ASTM F405</li></ul>	



AKP60140 - Twist on Cover



PART NUMBER FAMILY	INTERNAL DIAMETER x HEIGHT (in)	CAPACITY (US GALLONS)	WEIGHT (US POUNDS)	WALL THICKNESS (US INCH)	DIMENSIONS (in)				
					A	B	C	D	E
AKP20000	18 X 22	14	7.0	0.188	24.00	14	20	18	5
SLOTTED COVER FOR CORRUGATED BASIN									
AKP60140	18"	n/a	3	0.188	n/a	n/a	n/a	n/a	n/a



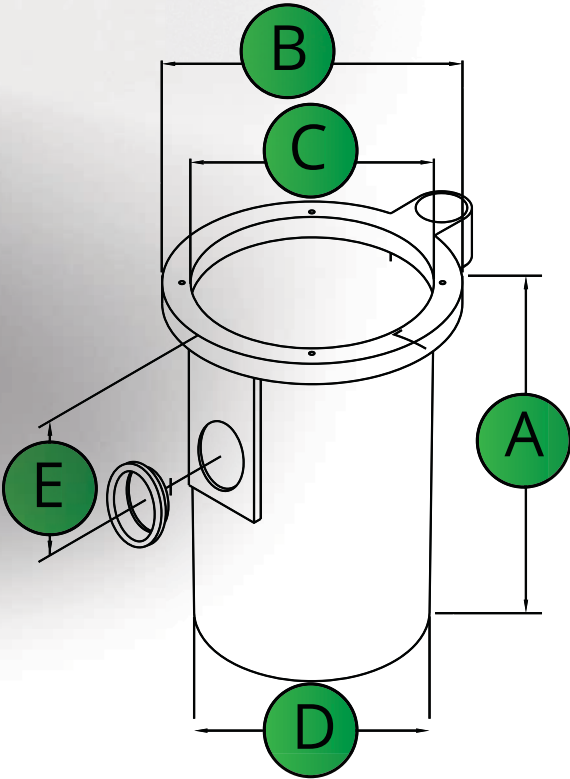
# SIDE VENT EJECTOR BASINS

The Side Vent Basin is a rotationally molded, polyethylene sump basin that provides easier access to the vent pipe to cut down on maintenance and service time. This design provides easy removal of the lid without the need to cut the vent pipe in order to service the system.



Our unique molded insert design allows for tight cover fits while also protecting screws from concrete and corrosion.

MATERIAL	Hexene Copolymer of Linear Low Density Polyethylene
WEIGHT	AKP40040 – 18X30 – 17 lbs
	AKP40210 – 22X32 – 24 lbs
VOLUME	AKP40040 – 30 Gallons
	AKP40210 – 49 Gallons
WALL THICKNESS	0.188"
WARRANTY	One year
DETAILS	
<ul style="list-style-type: none"><li>• Accepts up to 4" Adaptaflex, PVC Hubs, &amp; Cast Iron Hubs</li><li>• Reinforced, recessed flange</li><li>• Max temperature: 140 degrees F</li><li>• See Covers page for available cover configurations &amp; sizes</li><li>• 2" or 3" Side Vent Fitting allows vent to remain connected while the cover is removed</li></ul>	

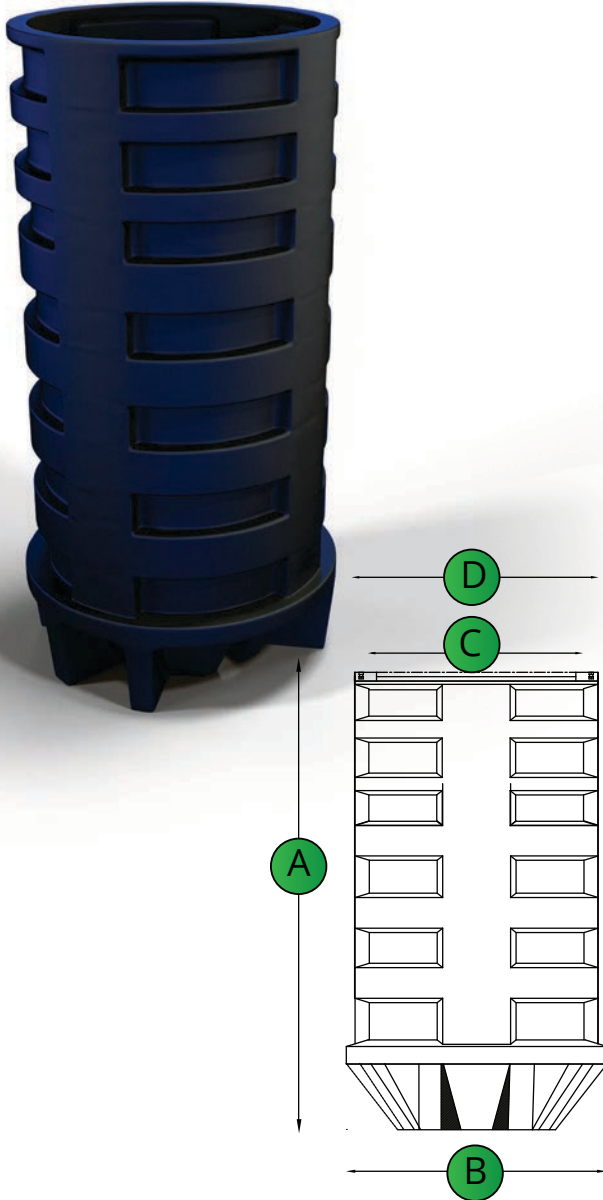


PART NUMBER FAMILY	INTERNAL DIAMETER x HEIGHT (in)	CAPACITY (US GALLONS)	WEIGHT (US POUNDS)	WALL THICKNESS (US INCH)	DIMENSIONS (in)				
					A	B	C	D	E
AKP40040	18x30	30	17	0.188	32.5	22	17.5	16.5	10.5
AKP40120	22x32	49	24	0.188	32.5	26	22	21.5	10.5



# RIBBED BASINS

The Ribbed Basin is a rotationally molded, polyethylene sump basin that comes in a variety of sizes 24x48 (98 Gal.), 24x60 (118 Gal.), 24x72 (141 Gal.), 24x84 (165 Gal.), and 36x48 (200 Gal.). This basin can function as an external sump basin or lift out station.



<b>MATERIAL</b>	Hexene Copolymer of Linear Low Density Polyethylene
<b>WEIGHT</b>	67 lbs to 130 lbs
<b>VOLUME</b>	94 to 200 Gallons
<b>WALL THICKNESS</b>	0.25"
<b>WARRANTY</b>	One year
<b>DETAILS</b>	
<ul style="list-style-type: none"> <li>Accepts up to 4" Adaptaflex, PVC Hubs, &amp; Cast Iron Hubs</li> <li>Reinforced, recessed flange</li> <li>Max temperature: 140 degrees F</li> <li>See Covers page for available cover configurations &amp; sizes</li> <li>Extensions available in 24" or 36"</li> <li>8 molded inserts to protect self-tapping screws from concrete and corrosion</li> <li>Available alone or with a complete rail system</li> </ul>	
<b>PACKAGED PUMP SYSTEM INCLUDES</b>	
<ul style="list-style-type: none"> <li>Stainless Steel Guide Rails</li> <li>Stainless Steel Discharge Piping</li> <li>Polyethylene Cover Options: AKP60160 to AKP60190)</li> <li>Pump Lifting Chains</li> <li>Accepts most 1 - 1/4" to 2" Discharge Pumps</li> <li>Engineered ribbed design for superior structural integrity</li> </ul>	

PART NUMBER FAMILY	INTERNAL DIAMETER x HEIGHT (in)	CAPACITY (US GALLONS)	WEIGHT (US POUNDS)	WALL THICKNESS (US INCH)	DIMENSIONS (in)			
					A	B	C	D
AKP20010	24 X 48	98	67	0.25	48.375	29.75	22.375	27.5
AKP20020	24 x 60	118	80	0.25	59.75	29.75	22.375	27.5
AKP20020-H	24 x 60 HD	118	85	0.25	59.75	29.75	22.375	27.5
AKP20030	24 x 72	141	92	0.25	72.125	29.75	22.375	27.5
AKP20040	24 x 84	165	105	0.25	84.125	29.75	22.375	27.5
AKP20045	24 x 96	188	130	0.25	96.125	29.75	22.375	27.5
AKP20260	36 x 48	200	120	0.25	48.00	42.75	34.75	39.75
AKP20270	36 x 48	200	120	0.25	48.00	42.75	34.75	39.75



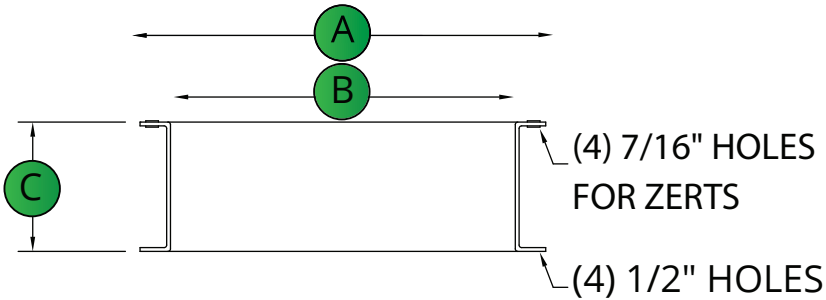
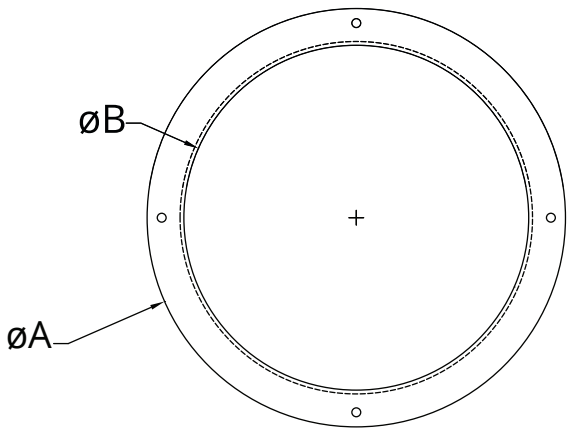


# POLY BASIN EXTENSIONS

The Basin Extension is a polyethylene riser that extends the height of your basin by 6" and 12" to increase the capacity of your basin or bring it up to final grade. These extensions come with a gasket pack and metal inserts to make assembly easier. We also offer an extension for our triple garage basins.



MATERIAL	Hexene Copolymer of Linear Low Density Polyethylene
WEIGHT	AKP10270 – 5 lbs
	AKP10260 – 8 lbs
	AKP20005 – 8 lbs
	AKP20250 - 10 lbs
VOLUME	n/a
WALL THICKNESS	0.188"
WARRANTY	One year
DETAILS	
<ul style="list-style-type: none"><li>• Available in 6" and 12" lengths</li><li>• Pre-Drilled Holes for Ease of Installation</li><li>• Includes 4 - 1/4"-20 Bolts, Inserts and Foam Gasket</li><li>• Accepts all 18" Covers</li><li>• Great for Changing Inlet Depths, due to Grade Adjustments</li></ul>	



PART NUMBER FAMILY	INTERNAL DIAMETER x HEIGHT (in)	WEIGHT	WALL THICKNESS	DIMENSIONS (in)		
		(US POUNDS)	(US INCH)	A	B	C
AKP10270	18 X 6	5	0.188	20.5	17.0	6.0
AKP10260	18 X 12	8	0.188	20.5	17.0	12.0
AKP20005	24 X 12	8	0.188	28.5	24.0	12.0
AKP20250	36 X 12	10	0.188	40.5	36.0	12.0



# SUMP AND SEWAGE BASIN COVERS

AK offers an extensive line of basin covers and accessories just right for your particular installation. Covers are available in powder-coated Steel, Structural Foam, and Plastic Domes for simplex applications. In response to the demand for radon sealed systems, there are several covers especially designed for radon applications that come complete with seal gaskets and bolts.



## 18" STRUCTURAL FOAM

**Part Numbers:** AKP80008 to AKP80250

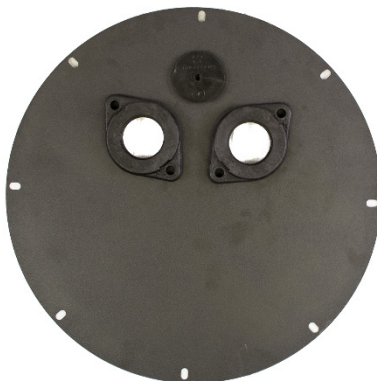
**Discharge Sizes:** 1.5", 2", & 3"

**Vent Sizes:** 1.5", 2", & 3"

**Bolt Down Flanges:** 1.5", 2", 3", & Gas Tight

Solid or Slotted design

With or without holes and hardware



## 18" STEEL

**Part Numbers:** AKP70000 to AKP70300

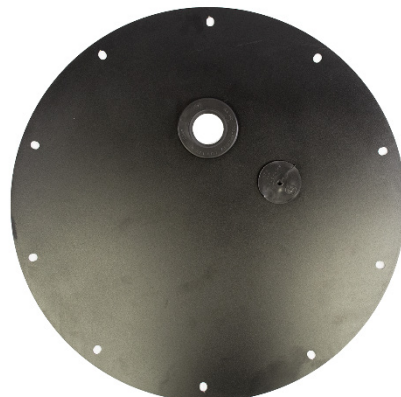
**Discharge Sizes:** 1.25", 2", & 3"

**Vent Sizes:** 1.5", 2", & 3"

**Bolt Down Flanges:** 1.5", 2", 3", & Gas Tight

Solid Cover option available

With or without holes and hardware



## 22" STEEL SIDE VENT

**Part Numbers:** AKP70310 & AKP70300

**Discharge Sizes:** 2" or 3"

**Vent Sizes:** 2" or 3"

**Bolt Down Flanges:** 2", 3", & Gas Tight



## 24" COVER FOR RIBBED BASIN

**Part Numbers:** AKP60160 to AKP60190

**Discharge Sizes:** 2"

**Vent Sizes:** 1.5", 2", & 3"

**Bolt Down Flanges:** 1.5", 2", 3", & Gas Tight

Solid cover available or heavy duty option



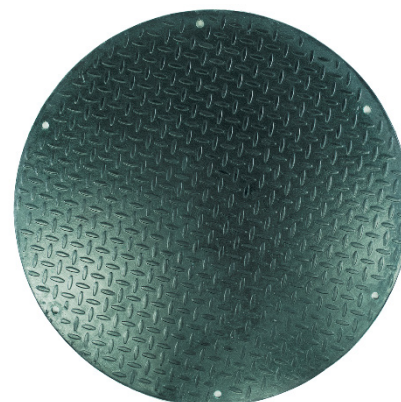
## 24" STEEL

**Part Numbers:** AKP70345 to AKP70380

**Discharge Sizes:** 1.5" or 2"

**Vent Sizes:** 1.5", 2", & 3"

**Bolt Down Flanges:** 1.5", 2", 3", & Gas Tight



## FIBERGLASS COVERS

**Part Numbers:** AKP90000 to AKP90050

**Discharge Sizes:** n/a

**Vent Sizes:** n/a

**Bolt Down Flanges:** n/a

**Sizes:** 24", 30", 36"

Available in 24" co-polymer option

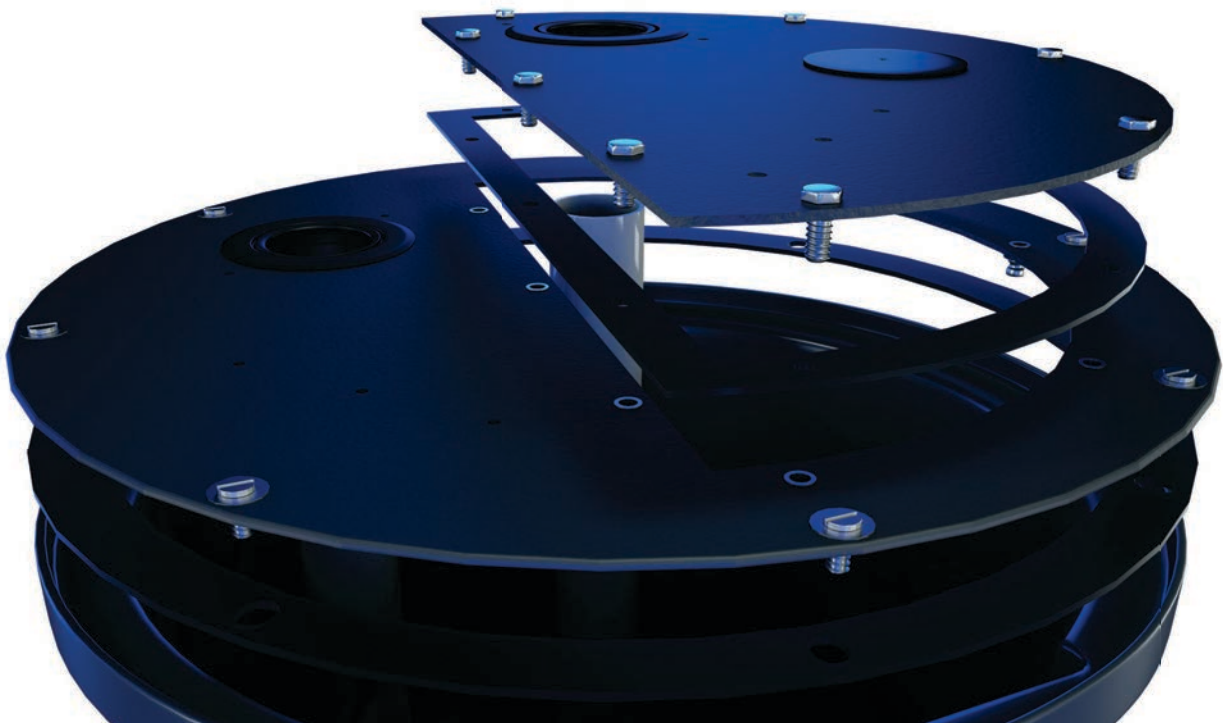


# TWO-PIECE UNIVERSAL COVER

Now introducing our latest product innovation, the redesigned AK two-piece sump and sewage basin cover. The innovative access plate design will make it easier than ever to service a sump and sewage basin due to the brass inserts and removable cover design. Never worry about stripping screws in the cover again. Quick and easy access means saving time, money, and no need for replacement parts.



MATERIAL	Hexene Copolymer of Linear Low Density Polyethylene
WEIGHT	4 lbs
WALL THICKNESS	0.25
WARRANTY	One year
COVER SPECS	
<ul style="list-style-type: none"><li>• <b>Part Numbers:</b> AKP80308 to AKP80350</li><li>• <b>Discharge Sizes:</b> 1.5", 2", &amp; 3"</li><li>• <b>Vent Sizes:</b> 1.5", 2", &amp; 3"</li><li>• <b>Bolt Down Flanges:</b> 1.5", 2", 3", &amp; Gas Tight</li></ul>	
DETAILS	
<ul style="list-style-type: none"><li>• Heavy duty structural foam construction</li><li>• Stainless steel hardware and (8) brass inserts for access plate</li><li>• One-piece heavy duty PVC gasket for a radon tight design</li><li>• Easy access to the pump without cutting the vent pipe</li><li>• Works with all AK Industries 18" sump basins</li><li>• Available with 1 -1/4" – 2" discharge and vent fittings</li><li>• Works with all models of submersible sump pumps</li><li>• Pedestrian traffic rated</li></ul>	





# ACCESSORIES

AK offers a variety of sump and sewage basin accessories such as cast iron hubs, PVC hubs, and combination hubs that will work with either metal or plastic. We also offer different discharge and vent flange options such as the bolt-down flange or a regular flange fitting.



**AKP10160**

CAST IRON HUB 2"



**AKP10170**

CAST IRON HUB 4" CURVED



**AKP10180**

CAST IRON HUB 4"

## HUBS



**AKP10185**

PVC HUB 3"



**AKP10186**

PVC HUB 4"



**AKP10187**

PVC COMBO HUB 4"

## FLANGES



**AKP10120**

DISCHARGE FLANGE 1.25"



**AKP10130**

DISCHARGE FLANGE 1.5"



**AKP10140, AKP10150**

DISCHARGE FLANGE 2" & 3"

## VENT FLANGES



**AKP10810**

THREADED VENT FLANGE 2"



**AKP10820**

THREADED VENT FLANGE 3"





# ADAPTAFLEX FITTINGS

The AK Adaptaflex grommets are high quality polyethylene, flexible grommets that provide a water and gas tight seal. These grommets have durable PVC Neoprene Composition and are used across many different industries.



**AKP10000**  
ADAPTAFLEX 0.375"



**AKP10010**  
ADAPTAFLEX 0.50"



**AKP10020**  
ADAPTAFLEX 0.75"



**AKP10030**  
ADAPTAFLEX 1.00"



**AKP10035**  
ADAPTAFLEX 1.25" FOR 2"  
HOLE



**AKP10040**  
ADAPTAFLEX 1.25" FOR 3"  
HOLE



**AKP10050**  
ADAPTAFLEX 1.5" FOR 2  
1/2" HOLE



**AKP10060**  
ADAPTAFLEX 1.5" FOR 3"  
HOLE



**AKP10070**  
ADAPTAFLEX 2"



**AKP10080**  
ADAPTAFLEX 3"



**AKP10081**  
GROMMET, PLUG 3"  
BLANK



**AKP10090**  
ADAPTAFLEX 3X2



**AKP10100**  
ADAPTAFLEX 4" SCH35



**AKP10110**  
ADAPTAFLEX 4" SCH40



**AKP10111**  
ADAPTAFLEX 4" SCH40  
WITH RETAINING RING



**AKP10120**  
ADAPTAFLEX 6" SCH35



**AKP10130**  
ADAPTAFLEX 6" SCH40



**AKP10570**  
MULTI-TITE 4"



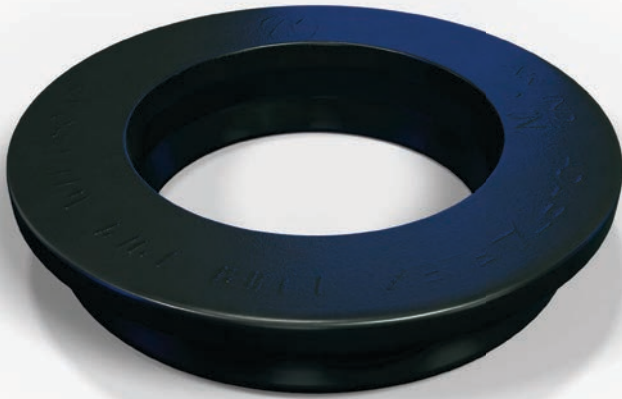
**AKP10710**  
RP1 (CORD SEAL) 1 HOLE



**AKP10720**  
RP2 (CORD SEAL) 2 HOLE

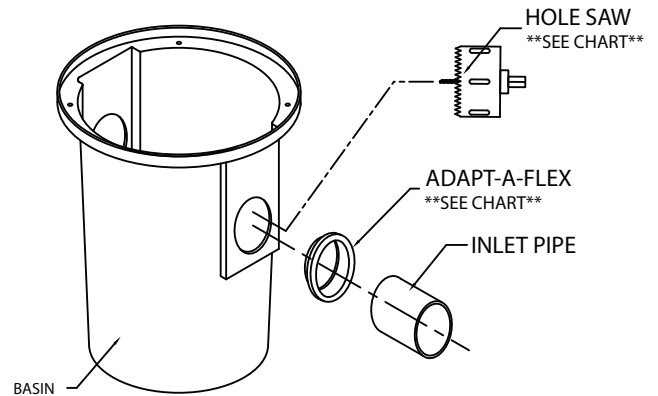
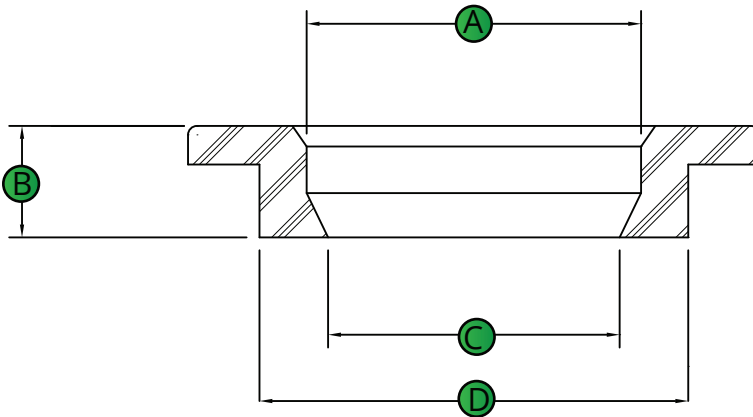


# ADAPTAFLEX FITTINGS



## BASIC ADAPTAFLEX INSTALLATION INSTRUCTIONS

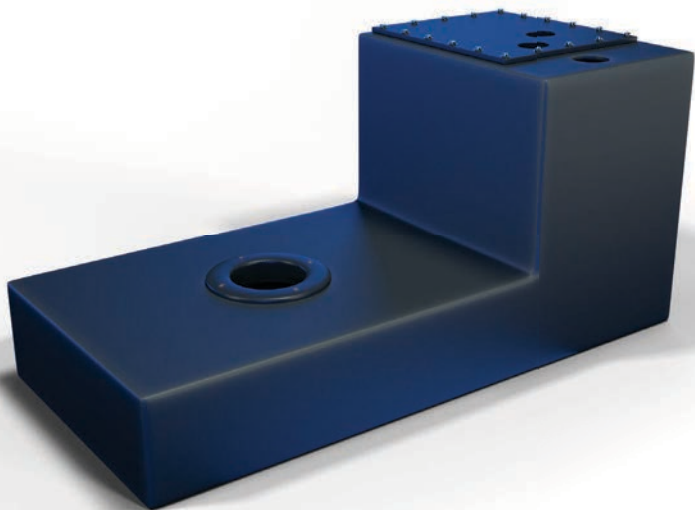
1. Select proper hole saw from chart above and cut hole at desired location in part.
2. Insert adaptaflex into the hole, making sure that it is flush against part.
3. Slightly bevel one end of inlet pipe, making it easier to push through adaptaflex.
4. Apply soapy water to adaptaflex at inlet insertion point.
5. Apply soapy water on the beveled end of the inlet pipe.
6. Push inlet pipe through adaptaflex.



PART NUMBER	SIZE	A	B	C	D	SAW SIZE
AKP10000	3/8"	0.659	0.375	0.467	1.046	1"
AKP10010	1/2"	0.853	0.488	0.662	1.325	1-1/4"
AKP10020	3/4"	1.044	0.495	0.847	1.324	1-1/4"
AKP10030	1"	1.300	0.220	1.050	1.780	1-3/4"
AKP10035	1 1/4" NS	1.637	0.506	1.385	2.078	2"
AKP10040	1-1/4" OS	1.618	0.507	1.361	2.971	3"
AKP10050	1-1/2" NS	1.898	0.503	1.589	2.566	2 1/2"
AKP10060	1-1/2" OS	1.824	0.502	1.554	2.950	3"
AKP10070	2"	2.303	0.513	2.040	2.980	3"
AKP10080	3"	3.491	0.512	3.195	4.065	3 7/8"
AKP10090	3" X 2"	2.288	0.513	2.011	4.055	3 7/8"
AKP10100	4" (SDR35)	4.292	0.508	3.837	4.979	4 7/8"
AKP10110	4" (SDR40)	4.435	0.515	4.192	5.035	4 7/8"
AKP10120	6" (SDR35)	6.275	0.512	5.500	7.063	7"

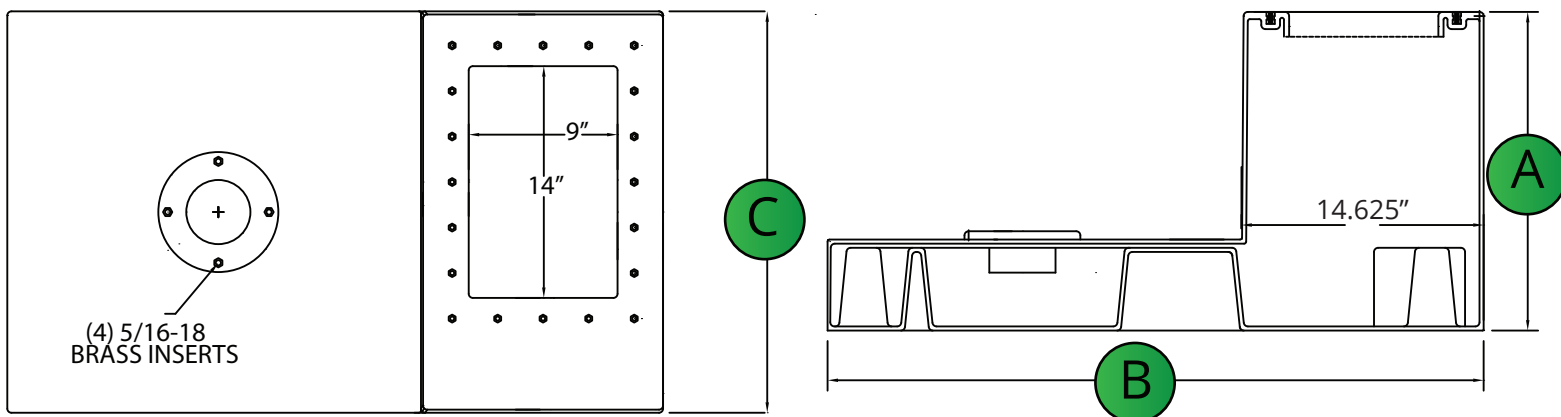
# PUMP JON

Put a bathroom anywhere with the AK Pump Jon System! You can install a toilet in basements, workshops, cabins, etc. without having to tear up any concrete floors. The Pump Jon allows for fixtures such as sinks, showers and tubs to be plumbed as well. It can be a free-standing or built-in system for a more professional look.



<b>MATERIAL</b>	Hexene Copolymer of Linear Low Density Polyethylene
<b>WEIGHT</b>	AKP50620 – 45 lbs
<b>VOLUME</b>	AKP50620 – 8 Gallons
<b>WALL THICKNESS</b>	0.188"
<b>WARRANTY</b>	One year
<b>DETAILS</b>	
<ul style="list-style-type: none"> <li>Designed for basements, workshops, etc.</li> <li>Pre-plumbed at factory for easy installation</li> <li>Includes bolt down lid for easy access</li> <li>Pre-Drilled Holes for Toilet discharge and vent</li> <li>Accepts wastewater from toilets, sinks, raised tubs, and showers</li> <li>DOES NOT INCLUDE PUMP</li> </ul>	

FOR INSTALLATION INSTRUCTIONS,  
VISIT [WWW.AKINDUSTRIES.COM](http://WWW.AKINDUSTRIES.COM)



PART NUMBER FAMILY	CAPACITY	WEIGHT	WALL THICKNESS	DIMENSIONS (in)		
	(US GALLONS)			A	B	C
AKP50620	8	45	.150	19.25	39.625	24.25



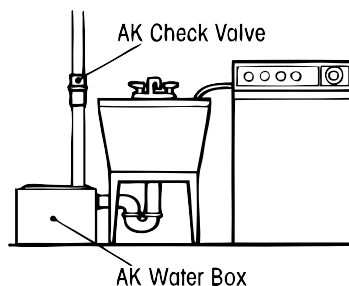
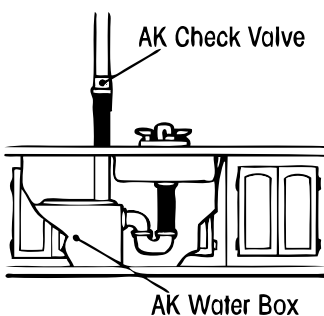
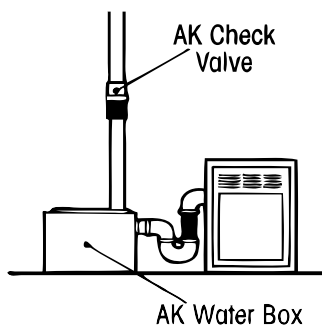
# WATER BOX

The AK Water Box economically solves water handling for laundry tubs, washing machines, wet bars, dehumidifiers, and many other storage and pumping applications. The unit comes completely assembled for an easy, stress-free installation.



<b>MATERIAL</b>	Hexene Copolymer of Linear Low Density Polyethylene
<b>WEIGHT</b>	AKP50670 to AKP50690 – 8 lbs
<b>VOLUME</b>	AKP50670 to AKP50690 – 6 Gallons
<b>WALL THICKNESS</b>	0.125"
<b>WARRANTY</b>	One year
<b>DETAILS</b>	
<ul style="list-style-type: none"> <li>• Designed for laundry, wet bars, dehumidifiers, etc.</li> <li>• Assembled at the factory for easy installation</li> <li>• Includes Bolt Down Cover</li> <li>• Rotationally molded</li> <li>• Accepts most 1-1/4" and 1-1/2" Sump Pumps</li> <li>• Installs in minutes</li> <li>• DOES NOT INCLUDE PUMP</li> </ul>	

## TYPICAL INSTALLATIONS



PART NUMBER FAMILY	CAPACITY	WEIGHT	WALL THICKNESS	DIMENSIONS (in)		
	(US GALLONS)	(US POUNDS)	(US INCH)	LENGTH	WIDTH	HEIGHT
AKP50670	6	8	.125	17	11	14
AKP50680	6	8	.125	17	11	14
AKP50690	6	8	.125	17	11	14
AKP50700	6	8	.125	17	11	14



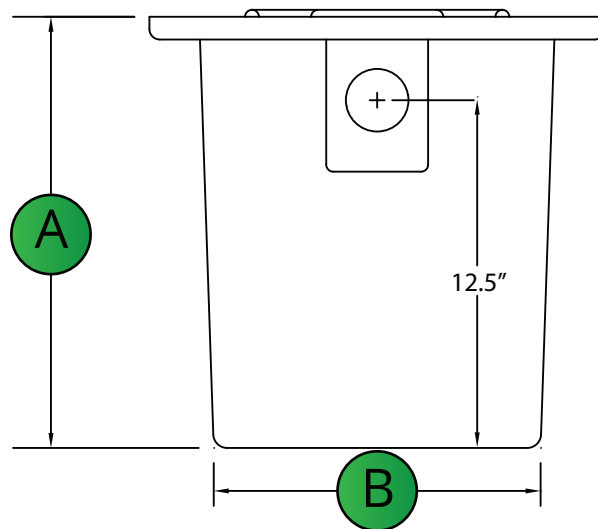
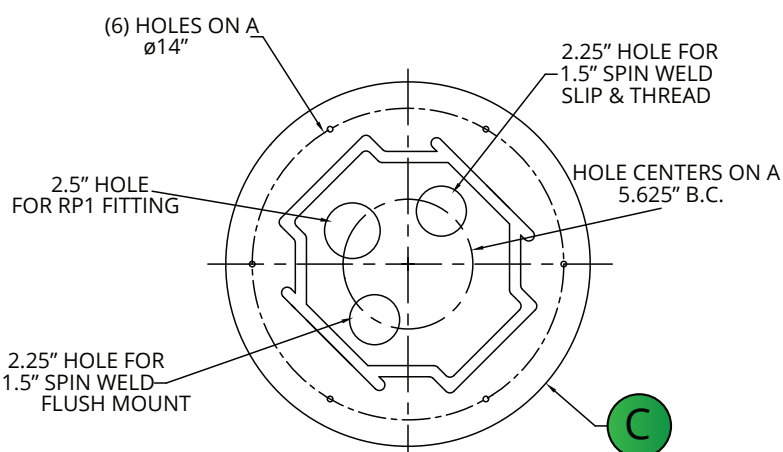


# SINK TRAY

As convenient as the Water Box, the Sink Tray instantly and economically solves water handling for laundry tubs, washing machines, wet bars, dehumidifiers and other waste storage and pumping applications.



<b>MATERIAL</b>	Hexene Copolymer of Linear Low Density Polyethylene
<b>WEIGHT</b>	AKP50630 – 7 lbs
<b>VOLUME</b>	AKP50630 – 5.5 Gallons
<b>WALL THICKNESS</b>	0.188"
<b>WARRANTY</b>	One year
<b>DETAILS</b>	
<ul style="list-style-type: none"> <li>Designed for laundry, wet bars, dehumidifiers, etc.</li> <li>Assembled at the factory for easy installation</li> <li>Includes Bolt Down Cover and 1.5" Inlet</li> <li>Rotationally molded</li> <li>Accepts most 1-1/4" and 1-1/2" Sump Pumps</li> <li>Installs in minutes</li> <li>DOES NOT INCLUDE PUMP</li> </ul>	



PART NUMBER FAMILY	CAPACITY (US GALLONS)	WEIGHT (US POUNDS)	WALL THICKNESS (US INCH)	DIMENSIONS (in)		
				A	B	C
AKP50630	5.5	8	.188	15.5	11.75	16.375



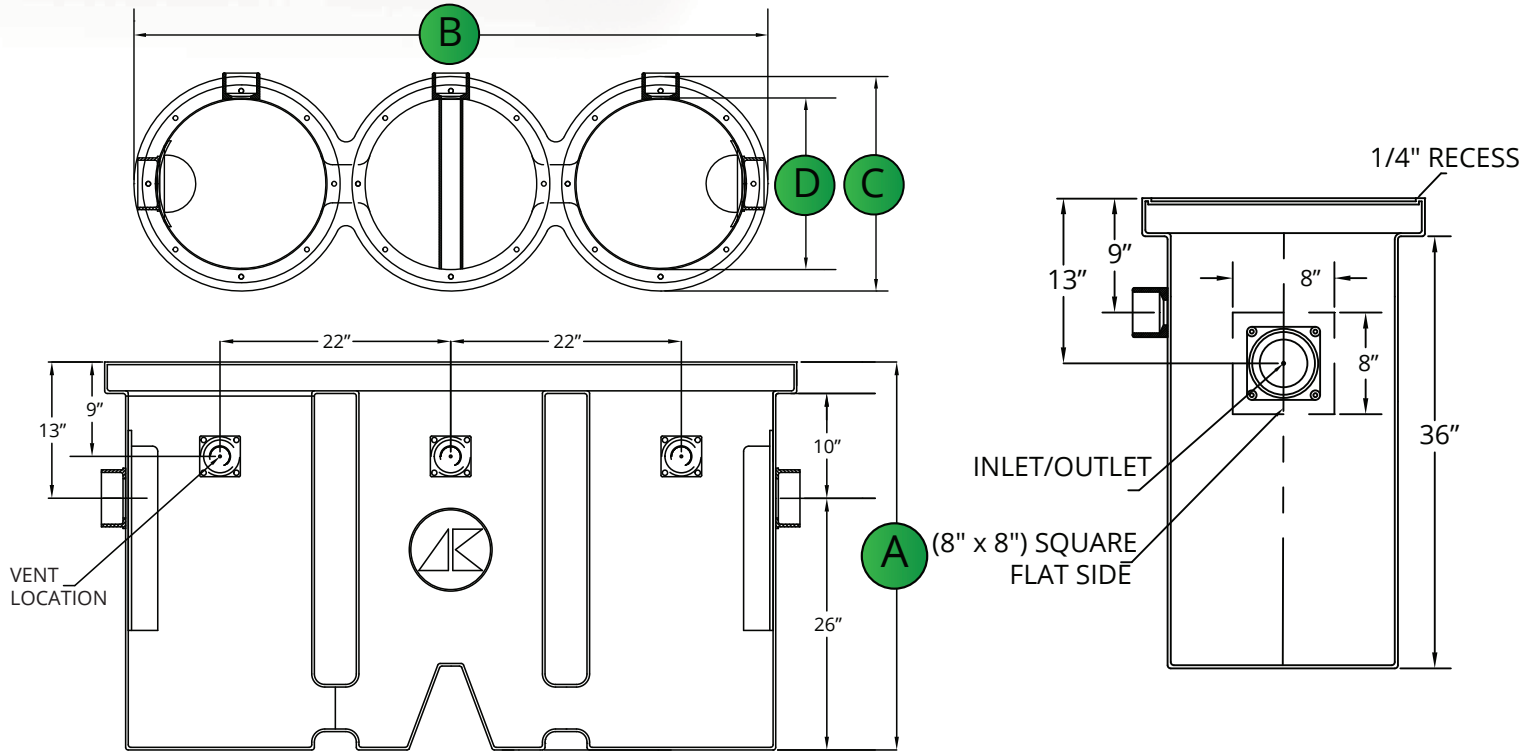
# TRIPLE GARAGE SYSTEMS

The newly redesigned AK Poly Triple Garage system is a rotationally molded, high density polyethylene oil and grease separator for small commercial operations. It separates volatile organic compounds, gases, fats, oils, and greases from the wastewater to prevent build-up of explosive gasses.



MATERIAL	Hexene Copolymer of Linear Low Density Polyethylene
WEIGHT	AKP50650 – 75 lbs
VOLUME	AKP50650 – 100 Gallons
WALL THICKNESS	0.25"
WARRANTY	One year
DETAILS	
<ul style="list-style-type: none"><li>Designed for garages, cleaning plants, and similar facilities where dangerous gases can accumulate</li><li>Pre-plumbed at factory for easy installation</li><li>Cast Iron Inlet/Outlet Fittings 2" Vent Fittings on each basin</li><li>Molded inserts to protect the screws from corrosion</li><li>Accepts extensions AKP10260 (6") &amp; AKP10270 (12")</li><li>Accepts any 18" cover</li></ul>	

**The only dual-direction oil and grease separator on the market!**



PART NUMBER FAMILY	INTERNAL DIAMETER x HEIGHT (in)	CAPACITY (US GALLONS)	WEIGHT (US POUNDS)	WALL THICKNESS (US INCH)	DIMENSIONS (in)			
					A	B	C	D
AKP50650	3 x (18 X 36)	22	75	0.25	39	66	22.5	18



# RADON PREVENTION SYSTEM

Radon penetration is a potentially serious problem in many homes and buildings throughout the country. AK's Radon Prevention System is designed to form a gas-tight, sealed unit that resists radon leakage and safely vents it to the outdoors. Any basin can be radon-proof with proper measures of gasketing and sealing.



MATERIAL	Various
WEIGHT	n/a
VOLUME	n/a
WALL THICKNESS	n/a
WARRANTY	One year
DETAILS	
<ul style="list-style-type: none"><li>Any basin and cover combination will work</li><li>Bolt Down flanges for discharge and vent required</li><li>RP1 for electrical cord</li><li>16 Bolt Steel Cover with Fittings and Foam Gasket</li><li>Bolt Down Cover required</li><li>Will not work with Slotted Cover</li></ul>	



# PROPER INSTALLATION

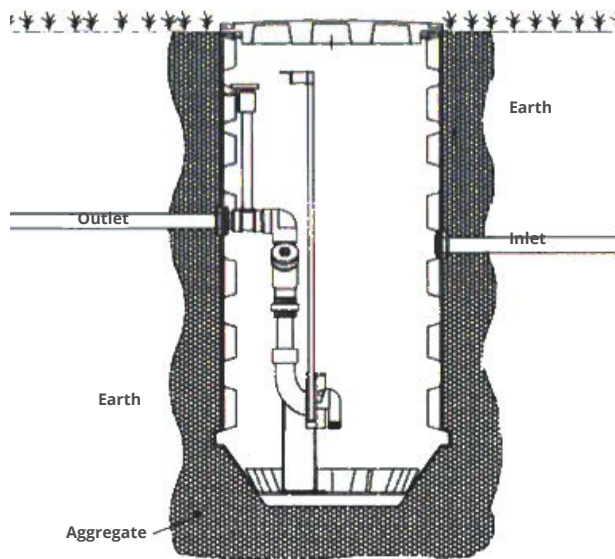
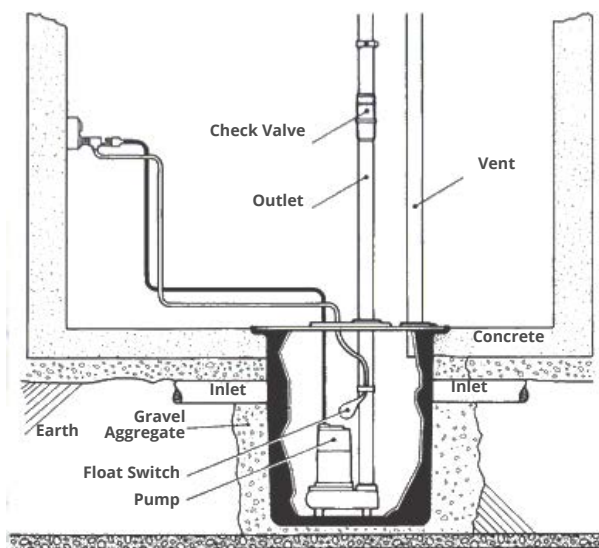
Proper installation of any type of equipment is critical to dependable operation and long, trouble-free life. Although you may be very experienced with the installation of basins and related products, please look over the following general instructions, typical installation illustrations as well as the recommendations for proper installations.

## GENERAL INSTALLATION GUIDELINES

1. Inspect all materials and components to be certain nothing was damaged in transit.
2. Excavate a hole large enough for the basin and at least 4"-6" of clean aggregate.
3. Prepare the bottom of the hole with 6" of clean aggregate or a level concrete pad.
4. Install the basin in the hole making certain it is level and meets grade requirements.
5. Connect any underground piping required then carefully back fill with naturally rounded aggregate.
6. Install pump and above ground piping being careful to follow pump manufacturer's instructions.
7. Attach cover to basin and complete installation by attaching electrical, vents, checkvalves, etc.

## TYPICAL INSTALLATION DIAGRAM

Shown below are two very typical installations that may be helpful. One is an indoor, vented sump/sewage basin—the other an outdoor, ribbed sewage system. Your particular needs may be slightly different but should follow the general guidelines as described above. If you have any questions about installations, please contact your AK field representative or an AK customer service technician.



## ALWAYS READ ALL INSTRUCTIONS PRIOR TO INSTALLATION

- Check all local, state and federal codes to make certain your installations are compliant.
- Make certain to use proper venting techniques and check valves where required.
- Do not install pumps or basins in areas classified as hazardous by US NEC or Canadian CEC.
- Generally, sump/sewage basins should be located at the lowest place in the basement or outdoor area to be drained.
- Floor drains from other areas as well as inside and outside footer tiles may be connected to basins. However, make certain that the basin size is suitable for the water or waste loading you may need to increase basin size or install multiple basins/pumps.
- Always protect the basin, lid, pump and piping from areas where a danger of freezing exists!
- Backfill and underfill for basins should always be naturally rounded, free flowing stone or gravel aggregate with a particle size of not less than 1/8" and no greater than 3/4" diameter. Never use an angular material like limestone whose sharp edges could eventually pierce a basin.





# COMMITMENT TO QUALITY

**At AK Industries, Inc., our goal is to be recognized by our customers as leaders in quality rotational molded products. We pursue this goal by embodying the philosophy of customer service, commitment to continuous improvement of quality, and the consistent manufacturing excellence.**

## MANUFACTURER'S ONE (1) YEAR LIMITED WARRANTY

A. K. Industries, Inc. (A.K.), the manufacturer of this product, in accordance with designs and specifications contained in this brochure, as modified by any additions or changes expressly reflected on the A.K. invoice for the product purchased, warrants to the original Purchaser that such product (as defined below) will be free from defects in materials and workmanship for a period of one (1) year from the date of purchase as evidenced by purchaser's proof of purchase; provided, however, that, notwithstanding any other term or provision of this limited warranty, and in accordance with the terms and conditions of the Contract of Purchase entered into between A.K. and the Purchaser, the terms and conditions of which are hereby incorporated by reference as though fully set forth here verbatim, A.K. MAKES NO OTHER EXPRESSED OR IMPLIED WARRANTY, AND EXPRESSLY DISCLAIMS ANY IMPLIED WARRANTIES, RELATING TO THE PRODUCT'S DESIGN, INCLUDING ITS FITNESS FOR ANY PARTICULAR PURPOSE.

Purchaser shall mean the person for whom the product is originally manufactured. A.K. will repair or replace, in its sole discretion, any defects in materials or workmanship in the product, but specifically excluding any defects in the design or performance of any A.K. product for its particular or any other purpose, occurring in the one-year warranty period. A.K.'S LIABILITY UNDER THIS WARRANTY IS LIMITED TO THE VALUE OF THE PRODUCT, AND IT SHALL NOT BE LIABLE FOR ANY CONSEQUENTIAL DAMAGES, LABOR, MATERIAL, FREIGHT, OR OTHER EXPENSES REQUIRED IN REPLACING, CORRECTING, OR RE-INSTALLING THE PRODUCT. SUCH REPAIR OR REPLACEMENT SHALL BE THE ONLY REMEDY AVAILABLE TO THE PURCHASER UNDER THIS LIMITED WARRANTY.

This limited warranty gives you specific legal rights, and you may also have other rights which vary from state to state. THIS LIMITED WARRANTY IS MADE IN LIEU OF ANY OTHER EXPRESSED WARRANTIES. FURTHERMORE, A.K. DISCLAIMS ANY IMPLIED WARRANTIES ARISING IN CONNECTION WITH THE SALE OF THIS PRODUCT, INCLUDING ANY IMPLIED WARRANTIES OF MERCHANTABILITY OR FITNESS FOR A PARTICULAR PURPOSE. No employee, dealer, agent or other person is authorized to make any warranty or representation with respect to this product, other than is expressly contained herein. IN NO EVENT SHALL A.K. BE LIABLE FOR INCIDENTAL OR CONSEQUENTIAL DAMAGES RESULTING FROM THE USE OF THIS PRODUCT. SOME STATES DO NOT ALLOW THE EXCLUSION OR LIMITATION OF INCIDENTAL OR CONSEQUENTIAL DAMAGES, SO THE ABOVE LIMITATIONS MAY NOT APPLY TO YOU.

This limited warranty does not cover defects resulting from accidents, damage while in transit to our manufacturing location, alterations, unauthorized repair, failure to follow instructions, misuse, or acts of God.

Any claims arising under the foregoing must be reported to A.K. in writing within a period of one (1) year from the date of delivery of the product to the original Purchaser.

**A.K. INDUSTRIES, INC. • P.O. BOX 640 • PLYMOUTH, IN 46563**



# PARTS GUIDE

AKP10000 ADAPTAFLEX 0.375"  
AKP10010 ADAPTAFLEX 0.50"  
AKP10020 ADAPTAFLEX 0.75"  
AKP10030 ADAPTAFLEX 1.00"  
AKP10035 ADAPTAFLEX 1.25" FOR 2" HOLE  
AKP10040 ADAPTAFLEX 1.25" FOR 3" HOLE  
AKP10050 ADAPTAFLEX 1.5" FOR 2 1/2" HOLE  
AKP10060 ADAPTAFLEX 1.5" FOR 3" HOLE  
AKP10070 ADAPTAFLEX 2"  
AKP10080 ADAPTAFLEX 3"  
AKP10081 GROMMET, PLUG 3" BLANK  
AKP10090 ADAPTAFLEX 3X2  
AKP10100 ADAPTAFLEX 6"SCH35  
AKP10110 ADAPTAFLEX 4"SCH40  
AKP10111 ADAPTAFLEX 4"SCH40 WITH RETAINING RING  
AKP10120 ADAPTAFLEX 6"SCH35  
AKP10130 ADAPTAFLEX 6"SCH40  
AKP10160 CAST IRON HUB 2"  
AKP10170 CAST IRON HUB 4" CURVED  
AKP10180 CAST IRON HUB 4" FLATBACK  
AKP10184 PVC HUB 3"  
AKP10185 PVC HUB 4"  
AKP10186 PVC COMBO HUB  
AKP10210 DISCHARGE FLANGE 1.25"  
AKP10220 DISCHARGE FLANGE 1.5"  
AKP10230 DISCHARGE FLANGE 2"  
AKP10240 DISCHARGE FLANGE 3"  
AKP10260 EXTENSION 18X12"  
AKP10270 EXTENSION 18X6"  
AKP20005 EXTENSION 24X12" RIB BASIN  
AKP10320 GSKT PACK 18"CVR 1.5X1.5 AAF  
AKP10330 GSKT PACK 18"CVR 1.5X1.5 AAF  
AKP10331 GSKT PACK 18"CVR 1.5X1.5 AAF W/ 3" PLUG  
AKP10340 GSKT PACK 18"CVR 1.5X1.5 BOLT DN  
AKP10350 GSKT PACK 18"CVR 1.5X2 AAF  
AKP10351 GSKT PACK 18"CVR 1.5X2 AAF W/ 3" PLUG  
AKP10360 GSKT PACK 18"CVR 1.5X2 BOLT DN  
AKP10370 GSKT PACK 18"CVR 1.5X3 AAF  
AKP10380 GSKT PACK 18"CVR 1.5X3 BOLT DN  
AKP10390 GSKT PACK 18"CVR 2X2/3 AAF  
AKP10400 GSKT PACK 18"CVR 2X2 AAF  
AKP10401 GSKT PACK 18"CVR 2X2 AAF W/ 3" BLANK PLUG  
AKP10405 GSKT PACK 18" 2X2 AAF STACKTEST  
AKP10410 GSKT PACK 18"CVR 2X2 BOLT DN  
AKP10420 GSKT PACK 18"CVR 2X3 AAF  
AKP10430 GSKT PACK 18"CVR 2X3 BOLT DN  
AKP10439 GSKT PACK 18"CVR 2/3X3 AAF  
AKP10440 GSKT PACK 18"CVR 3X3 AAF  
AKP10450 GSKT PACK 18"CVR 3X3 BOLT DN  
AKP10480 GSKT PACK 18"CVR RP1  
AKP10490 GSKT PACK 18"CVR SLOTTED  
AKP10500 GSKT PACK 18"CVR SOLID  
AKP20006 GSKT PACK 24X12 RIB BASIN EXTENSION  
AKP20255 GSKT PACK 36X12 RIB BASIN EXTENSION  
AKP10501 GSKT PACK 18" SV COVER 2" AAF  
AKP10506 GSKT PACK 18" EXT/ 4 BOLTS  
AKP10510 GSKT PACK 22"CVR 2 AAF  
AKP10520 GSKT PACK 22"CVR 3 AAF  
AKP10526 GSKT PACK 24"CVR 2X1.5 AAF  
AKP10530 GSKT PACK 24"CVR 2X2 AAF  
AKP10540 GSKT PACK 24"CVR 2X3 AAF  
AKP10555 GSKT PACK CAST IRON HUB 2" OR 4"  
AKP10570 JONES TIGHT 4"  
AKP10575 GSKT PACK SINKTRAY  
AKP10580 GSKT PACK PUMPJON

AKP10585 TRIPLE BAFFLE  
AKP10590 GSKT PACK WATERBOX 1.25"  
AKP10600 GSKT PACK WATERBOX 1.5"  
AKP10610 GROMMET WATERBOX 1.25"  
AKP10620 GROMMET WATERBOX 1.5"  
AKP10710 RP1 (CORD SEAL) 1 HOLE  
AKP10720 RP1 (CORD SEAL) 2 HOLE  
AKP10800 RTM FG FALSE BOTTOM FOR POLY RIBBED BASINS  
AKP10810 VENT FLANGE 2"  
AKP10820 VENT FLANGE 3"  
AKP10840 WATERBOX LID  
AKP12800 CONSEAL ROLL  
AKP36000 POLY PRO SERIES FEET PLATE  
AKP20000 18X24 CORRUGATED (AKP60140 FOR LID)  
AKP20010 BASIN RIB 24X48  
AKP20020-H BASIN RIB 24X60 HEAVY DUTY  
AKP20020 BASIN RIB 24X60  
AKP20030 BASIN RIB 24X72  
AKP20040 BASIN RIB 24X84  
AKP20250 EXT. 36X12 FOR 36 INCH RIBBED BASIN  
AKP20260 BASIN RIB 36X48 W/NO INSERTS IN BOTTOM  
AKP20270 BASIN RIB 36X48 W/INSERTS IN BOTTOM  
AKP30000 RTP 18X22  
AKP30020 RTP 18X22 (2) 4" CAST IRON HUB  
AKP30030 RTP 18X22 (2) INTRHUB  
AKP30050 RTP 18X22 (1) 4" CAST IRON HUB  
AKP30060 RTP 18X22 (1) INTRHUB  
AKP30070 RTP 18X30  
AKP30085 RTP 18X30 5" HOLE 9" DOWN  
AKP30115 RTP 18X30 FEET (1) 3" AAF  
AKP30120 RTP 18X30 FEET (1) 4" AAF  
AKP30125 RTP 18X30 FEET (1) 4" PVC ASSY.  
AKP30130 RTP 18X30 FEET (1) 4" CAST IRON HUB  
AKP30140 RTP 18X30 FEET (1) INTRHUB  
AKP30150 RTP 18X30 (2) 4" CAST IRON HUB  
AKP30160 RTP 18X30 (2) INTRHUB  
AKP30190 RTP 18X30 (1) INTRHUB  
AKP30200 RTP 24X24  
AKP30201 RTP 24X24 (1) 3" PVC INLET  
AKP30202 RTP 24X24 (1) 4" PVC INLET  
AKP30205 RTP 24X24 (1) 3" AAF  
AKP30210 RTP 24X24 (1) 4" AAF  
AKP30220 RTP 24X24 (1) 4" CAST IRON HUB  
AKP30225 RTP 24X24 (1) 3" SPINWELD  
AKP30230 RTP 24X30  
AKP30240 RTP 24X30 (1) 4" AAF  
AKP30250 RTP 24X30 (1) 4" CAST IRON HUB  
AKP30260 RTP 24X36  
AKP30265 RTP 24X36 (1) 3" AAF  
AKP30270 RTP 24X36 (1) 4" AAF  
AKP30280 RTP 24X36 (1) 4" CAST IRON HUB  
AKP30285 RTP 24X36 (1) 3" SPINWELD  
AKP30290 RTP 30X36  
AKP30300 RTP 30X36 (1) 4" AAF  
AKP30310 RTP 30X36 (1) 4" CAST IRON HUB  
AKP30320 RTP 36X36  
AKP30330 RTP 36X36 (1) 4" AAF  
AKP30340 RTP 36X36 (1) 4" CAST IRON HUB  
AKP35000 BASIN 18X22  
AKP35005 BASIN 18X22 (2) 4" AAF (9" DOWN)  
AKP35010 BASIN 18X22 (2) 4" CAST IRON HUB  
AKP35014 BASIN 18X22 (1) 4" AAF (NO HOLE)  
AKP35015 BASIN 18X22 (1) 4" AAF (9"DOWN)  
AKP35020 BASIN 18X22 (1) 4" CAST IRON HUB  
AKP35025 BASIN 18X22 MULTI DRAIN HOLES

AKP35030 BASIN 18X22 (1) 4" HOLE (10" DOWN)  
AKP35035 BASIN 18X22 (2) 4.5" HOLES 180 DEGREES (9"DOWN)  
AKP35040 BASIN 18X22 (1) 5" HOLE (10" DOWN)  
AKP35045 BASIN 18X22 (1) 5" HOLE (7" DOWN)  
AKP35050 BASIN 18X22 (2) 5" HOLES (7" DOWN)  
AKP35055 BASIN 18X22 (2) 5" HOLES 90 DEGREES (10" DOWN)  
AKP35060 BASIN 18X22 (2) 2" AAF (9"DOWN)  
AKP35065 BASIN 18X22 (1) 2" AAF  
AKP35070 BASIN 18X22 (1) 4" HOLE W/3" AAF (9" DOWN)  
AKP35075 BASIN 18X22 (1) 3" AAF NO HOLE  
AKP35080 BASIN 18X22 (1) 4" PVC INLET  
AKP35085 BASIN 18X22 (2) 4" PVC INLET  
AKP35090 BASIN 18X22 (1) 4" PVC COMBO  
AKP35095 BASIN 18X22 (1) 3" PVC INLET  
AKP38000 BASIN 18X30  
AKP38005 BASIN 18X30 WITH FEET  
AKP38010 BASIN 18X30 WITH FEET (1) 3" AAF  
AKP38015 BASIN 18X30 WITH FEET (1) 4" AAF  
AKP38020 BASIN 18X30 WITH FEET (1) 4" CAST IRON HUB  
AKP38025 BASIN 18X30 WITH FEET (1) 4" PVC INLET  
AKP38030 BASIN 18X30 (2) 4" CAST IRON HUBS  
AKP38035 BASIN 18X30 (2) 4" PVC INLETS  
AKP38040 BASIN 18X30 (1) 4" AAF  
AKP38045 BASIN 18X30 (1) 4" CAST IRON HUB  
AKP38050 BASIN 18X30 (1) 4" PVC INLET  
AKP38055 BASIN 18X30 (1) 3" AAF  
AKP38060 BASIN 18X30 (1) 3" PVC INLET  
AKP38065 BASIN 18X30 (1) 4" AAF NO HOLE  
AKP38070 BASIN 18X30 (1) 4" PVC COMBO  
AKP40010 BASIN SVT 18X30 2"VENT  
AKP40040 BASIN SVT 18X30 2"VENT(1) 4" AAF  
AKP40050 BASIN SVT 18X30 2"VENT(1) 4" CAST IRON HUB  
AKP40060 BASIN SVT 18X30 2"VENT(1) INTRHUB  
AKP40070 BASIN SVT 18X30 3"VENT  
AKP40100 BASIN SVT 18X30 3" VENT (1) 4" AAF  
AKP40110 BASIN SVT 18X30 3" VENT (1) 4" CAST IRON HUB  
AKP40120 BASIN SVT 18X30 3" VENT (1) INTRHUB  
AKP40210 BASIN SVT 22X32 2" VENT (1) 4" AAF  
AKP40220 BASIN SVT 22X32 2" VENT (1) 4" CAST IRON HUB  
AKP40230 BASIN SVT 22X32 2" VENT (1) INTRHUB  
AKP40260 BASIN SVT 22X32 3" VENT (1) 4" AAF  
AKP40270 BASIN SVT 22X32 3" VENT (1) 4" CAST IRON HUB  
AKP40280 BASIN SVT 22X32 3" VENT (1) INTRHUB  
AKP50000 BASIN STD 14X24  
AKP50620 BASIN QUICKJON  
AKP50630 BASIN SINKTRAY  
AKP50650 BASIN TRIPLE GARAGE  
AKP50670 BASIN WATERBOX 1.5 INLX1.25 DIS.  
AKP50680 BASIN WATERBOX 1.5 INLX1.5 DIS.  
AKP50690 BASIN WATERBOX 1.5 INLX1.5&1.25 DIS.  
AKP50700 BASIN WATERBOX 2 INLX1.5 DIS.  
AKP60140 CORRUGATED BASIN COVER (18" SLOTTED)  
AKP60160 ROTOMOLDED COVER 24" 2X1.5 AAF  
AKP60170 ROTOMOLDED COVER 24" 2X2 AAF  
AKP60180 ROTOMOLDED COVER 24" 2X3 AAF  
AKP60190-H ROTOMOLDED COVER HEAVY DUTY 24" SOLID  
AKP60190 ROTOMOLDED COVER 24" SOLID  
AKP70000 STEEL SPLIT 18" 2X2 AAF  
AKP70001 STEEL SPLIT 18" 2X2 AAF W/ 3" BLANK PLUG  
AKP70010 STEEL SPLIT 18" 2X2 BOLT DN  
AKP70020 STEEL SPLIT 18" 2X3 AAF  
AKP70030 STEEL SPLIT 18" 2X3 BOLT DN  
AKP70040 STEEL SPLIT 18" 3X2 AAF  
AKP70050 STEEL SPLIT 18" 3X2 BOLT DN

AKP70060 STEEL SPLIT 18" 3X3 AAF  
AKP70070 STEEL SPLIT 18" 3X3 BOLT DN  
AKP70120 STEEL 18" COVER (1) HOLE/BOLTS & RP1  
AKP70121 STEEL 18" COVER ONLY (1) HOLE  
AKP70122 STEEL 18" COVER/BOLTS (1) HOLE  
AKP70125 STEEL 18" 1.25X2 AAF  
AKP70126 STEEL 18" 1.25X2 AAF W/ 3" BLANK PLUG  
AKP70130 STEEL 18" 1.5X1.5 AAF  
AKP70131 STEEL 18" 1.5X1.5 AAF W/ 3" BLANK PLUG  
AKP70140 STEEL 18" 1.5X1.5 BOLT DN  
AKP70142 STEEL 18" 1.5X3 AAF  
AKP70143 STEEL 18" 1.5X2 AAF  
AKP70144 STEEL 18" 1.5X2 AAF W/ 3" BLANK PLUG  
AKP70150 STEEL 18" 2X2 AAF  
AKP70151 STEEL 18" 2X2 AAF W/ 3" BLANK PLUG  
AKP70170 STEEL 18" 2X2 BOLT DN  
AKP70180 STEEL 18" 2X3 AAF  
AKP70190 STEEL 18" 2X3 BOLT DN  
AKP70200 STEEL 18" 3X2 AAF  
AKP70210 STEEL 18" 3X2 BOLT DN  
AKP70220 STEEL 18" 3X3 AAF  
AKP70230 STEEL 18" 3X3 BOLT DN  
AKP70300 STEEL 18" SOLID  
AKP70310 STEEL 22" 2"AAF  
AKP70320 STEEL 22" 3"AAF  
AKP70345 STEEL 24" 2X1.25 AAF  
AKP70350 STEEL 24" 1.5X1.5 AAF  
AKP70360 STEEL 24" 2X1.5 AAF  
AKP70370 STEEL 24" 2X2 AAF  
AKP70380 STEEL 24" 2X3 AAF  
AKP70400 STEEL 24" (1) HOLE  
AKP80000 SF 15" SLOTTED (FITS THE 14X24 BASIN)  
AKP80001 SF 15" SOLID (FITS THE 14X24 BASIN)  
AKP80008 SF 18" BOLTS (1) HOLE  
AKP80009 SF 18" (COVER ONLY) (1) HOLE  
AKP80010 SF 18" BOLTS & CORD PLUG (1) HOLE  
AKP80011 SF 18" 2" AAF SIDE VENT COVER  
AKP80013 SF 18" 3" AAF SIDE VENT COVER  
AKP80014 SF 18" 1.5 AAF SIDE VENT COVER  
AKP80020 SF 18" 1.5X1.5 AAF  
AKP80021 SF 18" 1.5X1.5 AAF W/ 3" BLANK PLUG  
AKP80030 SF 18" 1.5X1.5 BOLT DN  
AKP80040 SF 18" 1.5X2 AAF  
AKP80041 SF 18" 1.5X2 AAF W/ 3" BLANK PLUG  
AKP80050 SF 18" 1.5X2 BOLT DN  
AKP80060 SF 18" 1.5X3 AAF  
AKP80070 SF 18" 1.5X3 BOLT DN  
AKP80080 SF 18" 2X1.5 AAF  
AKP80081 SF 18" 2X1.5 AAF W/ 3" BLANK PLUG  
AKP80090 SF 18" 2X1.5 BOLT DN  
AKP80100 SF 18" 2X2 AAF  
AKP80102 SF 18" 2X2 AAF W/ 3" BLANK PLUG  
AKP80110 SF 18" 2X2 BOLT DN  
AKP80120 SF 18" 2X3 AAF  
AKP80130 SF 18" 2X3 BOLT DN  
AKP80140 SF 18" 1.5 AAFX3 BOLT DN  
AKP80150 SF 18" 3X2 AAF  
AKP80160 SF 18" 3X2 BOLT DN  
AKP80240 SF 18" SLOTTED W/BOLTS  
AKP80241 SF 18" SLOTTED W/O BOLTS  
AKP80250 SF 18" SOLID  
AKP80251 SF 18" SOLID (NO GSKT PACK)  
AKP90000 SOLID 24" FIBERGLASS GREEN  
AKP90010 SOLID 30" FIBERGLASS GREEN  
AKP90020 SOLID 36" FIBERGLASS GREEN



# NOTES & CONTACT

POSITION	CONTACT	PHONE	EMAIL
Sales Manager	James Conley	574-936-2542 ext 211	jamesc@akindustries.com
Sales Associate	Joann Rossi	574-936-2542 ext 232	joann@akindustries.com
Sales Associate/Approvals	Steve Davis	574-936-2542 ext 221	steved@akindustries.com
Sales Associate/Costing	Kurt Snearly	574-936-2542 ext 203	kurt@akindustries.com
Business Development	Pete Sabo	574-936-2542 ext 228	pete@akindustries.com

NOTES



# THE BEST AROUND UNDERGROUND

1-800-370-3749

1-574-936-2542

FAX# 1-574-936-2298

**AK INDUSTRIES**

PO BOX 640

PLYMOUTH, IN

46563

[WWW.AKINDUSTRIES.COM](http://WWW.AKINDUSTRIES.COM)