

TOILETS

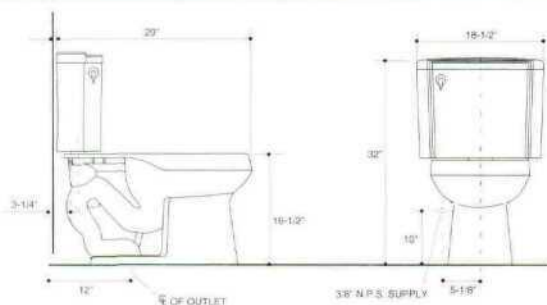
FOLIO
COMFORT HEIGHT

K-3445 Folio Comfort Height Toilet and Lustra toilet seat (K-4652) in Ice Grey.

- Taller 16 1/2" Comfort Height bowl is the same as standard chair height
- Elongated bowl design
- 2" fully glazed trapway can pass an object the size of a handball
- Will comply with the ADA when installed per the requirements of the Accessibility Guidelines, Section 4.16 Water Closets, of the Act

ADA

Model	K-3445	More Info.
Bowl Style	Elongated	
Overall Dimensions (Front/Back x Side/Side x Height)	29" x 18 1/2" x 32" (737 x 470 x 813 mm)	
Height to Rim	16 1/2" (419 mm)	
Operating System	KOHLER gravity-fed siphon jet	15.3
Gallons Per Flush	1.6	
Includes	K-4274 Elongated bowl, K-4447 vitreous china tank, fill valve, tank cover, bolt caps and polished chrome trip lever	
Minimum Rough-in	12" (305 mm)	
Recommended		
Angle Supply	K-7637	4.19
Toilet Seat and Cover	K-4652(-A) Lustra, K-4752 Triko, K-4653 French Curve or K-4755-CP, K-4755-BR Vintage	15.24
Application	Class 1, 2, handicapped	
Optional		
Trip Lever	K-9438 In different finishes	17.16
Variations		
With Bidpan Lugs	Order K-4274-L bowl and K-4447 tank	



K-3445

HIGHLINE
COMFORT HEIGHT

K-3427 Highline Comfort Height Toilet with left-hand trip lever and Lustra seat and cover (K-4652) in Almond.

- Taller 16 1/2" Comfort Height bowl is the same as standard chair height
- Elongated bowl design
- Right- or left-hand trip lever models available
- Will comply with the ADA when installed per the requirements of the Accessibility Guidelines, Section 4.16 Water Closets, of the Act

ADA



Model	K-3427	K-3427-RA	More Info.
Bowl Style	Elongated		
Trip Lever Location	Left-hand	Right-hand	
Overall Dimensions	29" x 19 5/8" x 30" (737 x 498 x 762 mm)		
Height to Rim	16 1/2" (419 mm)		
Operating System	KOHLER gravity-fed siphon jet		15.3
Gallons Per Flush	1.6		
Includes	K-4274 Elongated bowl, K-4620 vitreous china tank, float valve, fill valve, tank cover, bolt caps, and left-hand polished chrome trip lever	K-4274 Elongated bowl, K-4620-RA vitreous china tank, float valve, fill valve, tank cover, bolt caps, and right-hand polished chrome trip lever	
Minimum Rough-in	12" (305 mm)		
Recommended			
Angle Supply	K-7637		4.19
Toilet Seat and Cover	K-4652(-A), Lustra or K-4653 French Curve		15.24, 17.15
Application	Class 1, 2, handicapped		
Variations			
With Tank Locks	Add suffix "-T" to product number		
With Bidpan Lugs	Order K-4274-L bowl plus K-4620 or K-4620-RA tank		
With Insuliner Tank Lining	K-3427-U	K-3427-UR	17.16



K-3427

KOHLER

RESIDENTIAL TOILETS

PRODUCT	MODEL NO.	DESCRIPTION	COLOR/ FINISH	LIST PRICE	CUBES	APPROX. SHIP WT.
 K-3427 HIGHLINE COMFORT HEIGHT TOILET ADA	HIGHLINE COMFORT HEIGHT™ TOILETS					
	K-3427 (LH trip lever)	Elongated toilet combination, 12" rough-in, includes K-9404-L/K-9440-R Polished Chrome trip lever (left-hand or right-hand), less seat and supply. 1.6 gpf (6 ltr/flush). 16-1/2" high bowl is ADA compliant.	White	\$ 218.95	7.1	88.0
			Full	280.55		
			Fashion	322.60		
	K-3427-RA (RH trip lever)	K-3427-RA combination consists of: K-4274 bowl	White	138.35	4.2	52.0
			Full	179.85		
			Fashion	206.85		
		K-4620 tank or K-4620-RA tank	White	80.60	2.9	36.0
			Full	100.70		
			Fashion	115.75		
	Insuliner® insulated tank lining - add suffix "U" to plate number for left-hand toilet. Suffix "UR" follows plate number for right-hand toilet.			ADD	51.15	
	Toilet with tank cover locks - add suffix "T" to plate number for left-hand toilet. Suffix "TR" follows plate number for right-hand toilet.			ADD	41.15	
	Left-hand toilet with bedpan lugs - order K-4620 tank and K-4274-L bowl. Right-hand toilet with bedpan lugs - order K-4620-RA tank and K-4274-L bowl.			ADD	19.65	
	ACCESSORIES					
Recommended Accessories K-4652(-A) or K-4653 toilet seat. Refer to Pages 285 - 286. K-7637 angle supply with stop. Refer to Page 288.						
Available Accessories K-9404-L (K-3427 only) or K-9440-R trip lever (K-3427-RA only). Refer to Pages 288 - 289.						
Full Line Colors 6 Skylight 33 Mexican Sand™ 45 Wild Rose™ 47 Almond 55 Innocent Blush™ 71 Seafoam Green 89 Desert Bloom™ 95 Ice™ Grey 96 Biscuit G9 Sandbar Y2 Sunlight						
High Fashion Colors 7 Black Black™ 52 Navy 58 Thunder™ Grey 97 Timberline™						
 K-3427-X HIGHLINE COMFORT HEIGHT PEACEKEEPER TOILET ADA	K-3427-X	HIGHLINE COMFORT HEIGHT PEACEKEEPER TOILET Elongated toilet combination, 12" rough-in, with Peacekeeper seat-actuated flush (no trip lever required). Includes seat, 1.6 gpf (6 ltr/flush). 16-1/2" high bowl is ADA compliant. K-3427-X combination consists of: K-4274 bowl	White	393.95	7.1	88.0
			Full	455.55		
			Fashion	497.60		
		K-4274 bowl	White	138.35	4.2	52.0
			Full	179.85		
			Fashion	206.85		
		K-4620-XE tank with seat	White	255.60	2.9	36.0
			Full	275.70		
			Fashion	290.75		
	Insuliner® insulated tank lining - add suffix "U" to plate number.			ADD	51.15	
	ACCESSORIES					
	Recommended Accessories K-7637 angle supply with stop. Refer to Page 288.					
	Full Line Colors 6 Skylight 33 Mexican Sand™ 45 Wild Rose™ 47 Almond 55 Innocent Blush™ 71 Seafoam Green 89 Desert Bloom™ 95 Ice™ Grey 96 Biscuit G9 Sandbar Y2 Sunlight					
	High Fashion Colors 7 Black Black™ 52 Navy 58 Thunder™ Grey 97 Timberline™					

BIDETS, TOILETS
& URINALS

KOHLER
FIXTURES®

ADA

Toilets displaying this symbol will comply with the Americans with Disabilities Act when installed per the requirements of the Accessibility Guidelines, Section 4.16 Water Closets, of the Act.