



CT708 - Wall Hung Flushometer Toilet
SC534 - Commercial Toilet Seat

- Powerful siphon jet flush
- Elongated rim
- Low consumption (6Lpf/1.6 Gpf)
- Available with performance matched TOTO® Flushometer Valve.

Vitreous china wall hung flushometer toilet with elongated rim. Low consumption (6Lpf/1.6 Gpf) siphon jet flush.

■ **CT708**

1-1/2" top spud inlet, less seat.

■ **CT708V**

1-1/2" back spud inlet, less seat.

□ **SS114**

SoftClose®Seat: Seat and lid gently close with a touch of a hand. Elongated, closed front seat with lid.

□ **SC134**

Elongated, open front seat with cover.

□ **SC534**

Elongated, open front seat less cover.

TOTO® wall hung toilets require a supporting carrier (supplied by others). Follow carrier manufacturer's installation instructions.

Colors:

Standard #01 Cotton

Optional See price book for additional colors

Recommended flushometer valve:

TOTO® Manual and Electronic Flush Valves are highly recommended for maximum performance.



CT708

Wall Hung Flushometer Toilet, 1.6 GPF

■ PERFORMANCE

The TOTO® low consumption flushometer toilet received high ratings during ANSI/ASME testing at independent laboratories. Designed with a powerful siphon jet flush, the bowl offers a large water surface and a 100% glazed trapway.

■ SPECIFICATIONS

Water Use: 1.6 Gpf/6.0Lpf
 Flush System: Siphon jet
 Min. Water Pressure: 15 psi (Flowing)
 Water surface: 12-5/8" x 10-1/4"
 Trap dia: 2-1/8"
 Trap seal: 2-5/8"
 Warranty: One Year Limited Warranty
 Material: Vitreous china

Shipping Weight:

CT708-Bowl

49 lbs.

CT708V-Bowl

53.5 lbs.

Shipping Dimensions:

CT708-Bowl

15-1/2"L x 15-1/2"W

x 26-3/8"H

CT708V-Bowl

17-1/8"L x 16"W x 26"H

Recommended carrier: Any Jay R. Smith siphon jet support (Four-bolt).

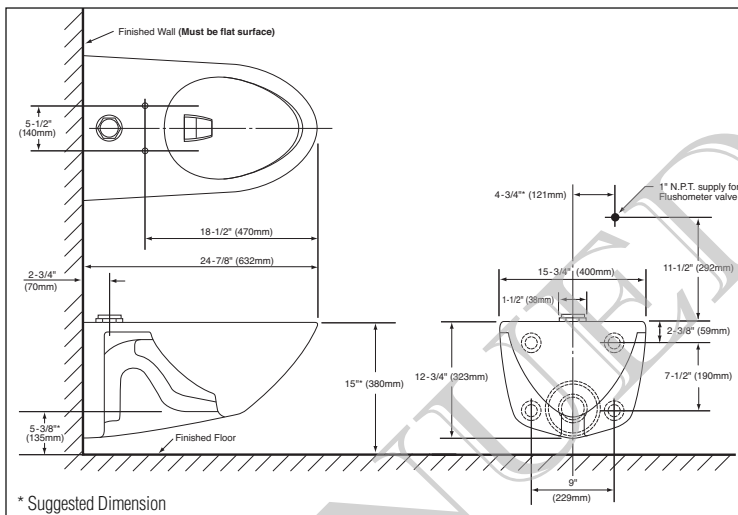
Fixture dimensions and hydraulic performance meet or exceed ANSI/ASME standard A112.19.2M and CAN/CSA B 45 requirements.

Listing / Approvals: IAPMO/UPC, CSA, City of Los Angeles, State of Massachusetts, and others.

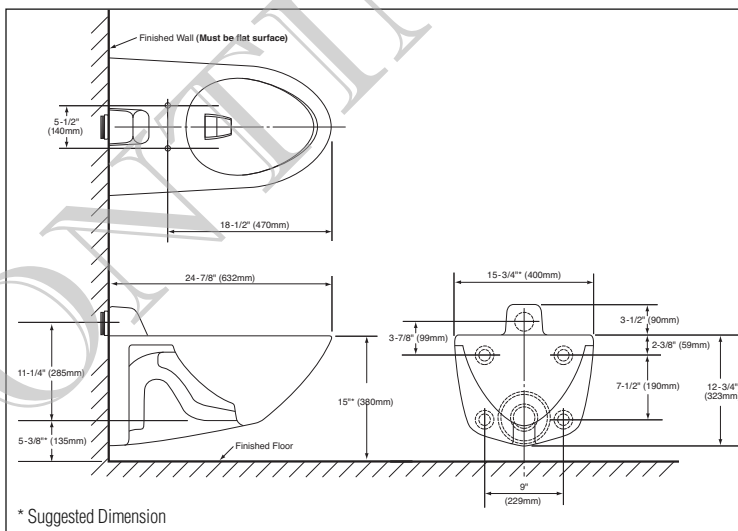


Meets the American Disabilities Act Guidelines and ANSI A117.1 requirements where installed so top of rim is 17" from the finished floor.

These dimensions and specifications are subject to change without notice.



CT708 Top Spud



CT708V Back Spud

Standard Installation	Retrofit Installation
<p>45mm (1 3/4")</p> <p>Standard bolt cap</p> <p>China</p>	<p>Wall</p> <p>Retrofit bolt cap</p> <p>China</p>
<p>Note: If carrier bolt doesn't extend/is flush with china, use retrofit caps (THU111).</p>	

TOTO®

TOTO® U.S.A., INC. • 1155 Southern Road, Morrow, GA 30260
 Tel. (888) 295-8134 • Fax. (800) 699-4889 • www.totousa.com
 Printed in U.S.A. © TOTO® LTD. 06/05 #E50070

Printed on recycled paper ♻️