

9

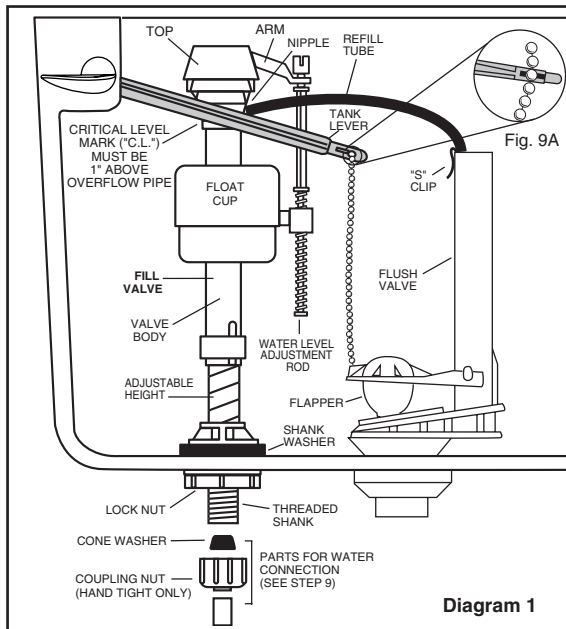


Diagram 1

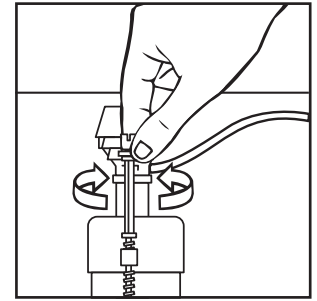
ADJUSTMENTS

- a. Adjust water level. Water level should be adjusted to level indicated on tank by adjusting float cup.

See Step 10 for water level adjustment method.

- b. If bowl fails to siphon, an adjustment may be required with the lift chain. Simply remove the bead chain from the retainment clip (see Fig. 9A) and take up slack on the chain, and reinsert on lift rod. Make sure the chain is not too taut.

10



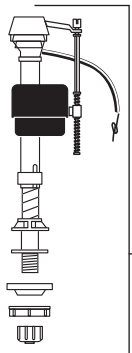
Turn on water supply. Submerge the FLOAT CUP under the water for 30 seconds. Adjust the water to desired level by turning WATER LEVEL ADJUSTMENT ROD and moving FLOAT CUP up or down.

11 CARE AND CLEANING

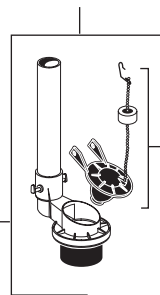
When cleaning your toilet, wash it with mild, soapy water, rinse thoroughly with clear water and dry with a soft cloth. Avoid detergents, disinfectants, or cleaning products in aerosol cans. NEVER use abrasive scouring powders or abrasive pads on your toilet seat. Some bathroom chemicals and cosmetics may damage the seat's finish.

⚠ WARNING: Do not use in-tank cleaners. Products containing chlorine (calcium hypochlorite) can seriously damage fittings in the tank. This damage can cause leakage and property damage.

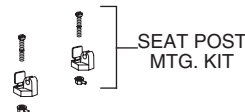
American Standard shall not be responsible or liable for any tank fitting damage caused by the use of cleaners containing chlorine (calcium hypochlorite).

FLUIDMASTER
WATER CONTROL

FLUSH VALVE



TANK COVER

SEAT AND COVER
(INCLUDES MTG. KIT)SEAT POST
MTG. KITTRIP
LEVERBOLT
CAPSCOMPACT CADET® 3 ONE PIECE
REPAIR PARTS LIST

NOTE: "XXX" represents color options. Specify when ordering.

DESCRIPTION	COMPONENT	QTY
Tank Cover	735125-400.XXX	1
Seat and Cover - Elongated	5350.110.XXX	1
DESCRIPTION	PART NUMBER	QTY
Bolt Cap Kit	034783-XXX0A	2
Trip Lever	738903-XXX0A	1
Water Control Assembly	738565-409.0070A	1
Flush Valve Assembly	738942-0070A	1
Flapper Assembly	738920-0070A	1

Single Threshold Shower Base

Estimated List Price: \$451 - \$881

- ✍ Lay the foundation for a perfect shower with the help of American Standard's shower bases. Our shower bases are available in a variety of sizes and styles to suit any bathroom.
- ✍ Acrylic with Fiberglass reinforcement
- ✍ Textured Bottom
- ✍ Integral water retention and tiling flange
- ✍ Water dam at front threshold
- ✍ Shower drain with stainless steel drain plate
- ✍ Available in a range of sizes



COLORS:



White (020)



Linen (222)



Bone (021)



Silver (165)



Fawn Beige (045)



Black (178)



Arctic (011)

FEATURES:

FIXTURES & COMPONENTS:

Main Fixtures

6034.ST - Single Threshold Shower Base
Estimated List Price: \$801 - \$881, based on color
1527 x 867 x 168mm (60-1/8"x34-1/8"x6-5/8")

- ✍ Available for Express Delivery

4834.ST - Single Threshold Shower Base
Estimated List Price: \$640 - \$704, based on color
1222 x 870 x 168mm (48-1/8"x34-1/4"x6-5/8")

- ✍ Available for Express Delivery