

Residential Manufactured Home Atmospheric Vent Gas Water Heater



Photo is of
RG2MH30T6X

FEATURING:

DEFENDER
SAFETY SYSTEM™

VITRAGLAS
+
MICROBAN

AHRI CERTIFIED™
www.ahridirectory.org



The Atmospheric Vent Manufactured Home FVIR Defender Safety System® Models Feature:

- **Housing and Urban Development**—These water heaters are designed in accordance with H.U.D. and are approved for installation in a manufactured home (mobile home) only and must be installed in an enclosure that will completely separate the water heater combustion and venting system from the dwelling interior.
- **Bradford White ICON System®**—Intelligent gas control with proven millivolt powered technology and built-in piezo igniter. A standard, off the shelf thermopile converts heat energy from the pilot flame into electrical energy to operate the gas valve and microprocessor. No need for external electricity.
 - **Enhanced Performance**—Proprietary algorithms provide enhanced First Hour Delivery ratings and tighter temperature differentials.
 - **Advanced Temperature Control System**—Microprocessor constantly monitors and controls burner operation to maintain consistent and accurate water temperature levels.
 - **Intelligent Diagnostics**—An exclusive green LED light prompts the installer during start-up and provides ten different diagnostic codes to assist in troubleshooting.
 - **Pilot On Indication**—Flashing green LED provides positive indication that pilot is on.
 - **Separate Immersed Thermowell**—High strength advanced polymer composite thermowell provides isolation between electric temperature sensor and surrounding water. No need to drain the tank when removing gas valve.
 - **Built in field convertibility between Propane or Natural Gas**—no additional purchase required.
- **Advanced ScreenLok® Technology Flame Arrestor Design**—Flame arrestor is designed to prevent ignition of flammable vapor outside of the water heater.
- **Resettable Thermal Switch**—Proven and reliable bimetallic switch prevents burner and pilot operation in case of ongoing flammable vapors burning inside of the combustion chamber or restricted air flow.
- **Vitrage® Lining with Microban®**—An exclusively engineered enamel formula that provides superior tank protection from the corrosive effects of water; and with Microban® antimicrobial product protection to help prevent the growth of bacteria, mold and mildew on the surface of the tank lining.
- **Insulation System**—Non-CFC foam insulation covers the sides and top of the tank, reducing heat loss. This results in less energy consumption, improved efficiencies, and jacket rigidity.
- **Water Connections**—3/4" (19mm) NPT factory-installed true dielectric fittings extend water heater life and simplify water line connections.
- **Heat Traps**—Installed on hot water outlet to minimize heat loss through piping.
- **Protective Anode Rod**
- **T&P Relief Valve**—Installed.
- **Low Restrictive Brass Drain Valve**—Durable tamper proof design.
- **3"x4" "Snap Lock" Draft Diverter**—Allows either 3" (76mm) or 4" (102mm) vent connections with inputs of 40,000 BTU/Hr. or less.
- **Roof Jack Kit**—Ordered separately and includes a roof jack kit and hardware. Must specify roof jack size when ordering. Available in 12" (305mm), 18"/32" (457/813mm), 32"/60" (813/1524mm), or 48"/95" (1219/2413mm) lengths.
 - **Must order roof jack kit for new installations.**

6 or 10-Year Limited Tank Warranties / 6 or 10-Year Limited Warranty on Component Parts.

For more information on warranty, please visit www.bradfordwhite.com

For products installed in USA, Canada and Puerto Rico. Some states do not allow limitations on warranties. See complete copy of the warranty included with the heater.

Microban® antimicrobial product protection helps prevent the growth of bacteria, mold and mildew that may affect the product. The built-in antimicrobial properties do not protect users or others from disease-causing organisms. Microban® is a registered trademark of Microban Products Company.

MANUFACTURED UNDER ONE OR MORE OF THE FOLLOWING U.S. PATENTS: 5,682,666; 7,634,976; 5,660,165; 5,954,492; 6,056,542; 6,935,280; 5,372,185; 5,485,879; 5,574,822; 7,971,560; 7,992,526; 6,684,821; 7,334,419; 7,866,168; 7,270,087; 7,007,748; 5,596,952; 6,142,216; 7,699,026; 5,341,770; 7,337,517; 7,665,211; 7,665,210; 7,063,132; 7,063,133; 7,559,293; 7,900,589; 5,943,984; 8,082,888; 5,988,117; 7,621,238; 7,650,859; 5,761,379; 7,409,925; 5,277,171; 8,146,772; 7,458,341; 2,262,174. OTHER U.S. AND FOREIGN PATENT APPLICATIONS PENDING. CURRENT CANADIAN PATENTS: 2,314,845; 2,504,824; 2,108,186; 2,143,031; 2,409,271; 2,548,958; 2,112,515; 2,476,685; 2,239,007; 2,092,105; 2,107,012. ScreenLok® and Vitrage® are registered trademarks of Bradford White® Corporation.

Residential Manufactured Home Atmospheric Vent Gas Water Heater

Manufactured Home Models

NATURAL GAS AND LIQUID PROPANE GAS

Meet or exceed ASHRAE 90.1b (current standard) C.E.C. Listed
76% Recovery Efficiency

Model Number	Nominal Gal. Capacity		DOE Rated Storage Volume (Gal.)	BTU/Hr. Input	LP BTU/Hr. Input	First Hour Rating (Gal.)	Uniform Energy Factor	Recovery at 90°F Rise*				Model Number	Nominal Liter Capacity	DOE Rated Storage Volume (Liters)	kW Input	LP kW Input	First Hour Rating (Liters)	Uniform Energy Factor	Recovery at 50°C Rise*	
	U.S. Gal.	Imp. Gal.						U.S. GPH	Imp. GPH	U.S. GPH	Imp. GPH								Liters/Hour	LP Liters/Hour
RG2MH30T6X	30	25	29	32,000	32,000	50	0.54	34	28	34	28	RG2MH30T6X	114	110	9.4	9.4	190	0.54	129	129
RG2MH40T6X	40	33	37	34,000	34,000	54	0.59	37	31	37	31	RG2MH40T6X	151	140	10.0	10.0	205	0.59	140	140

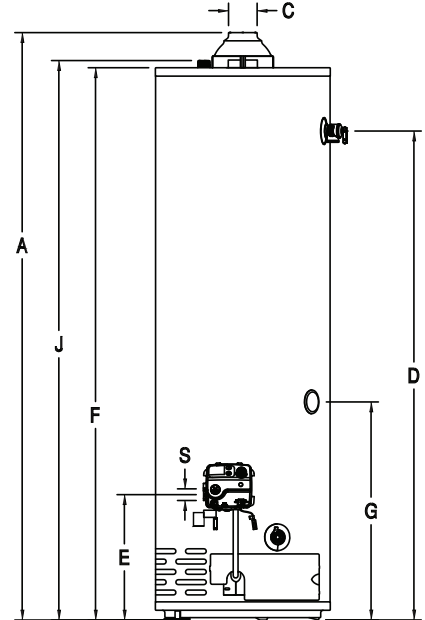
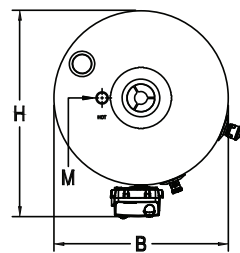
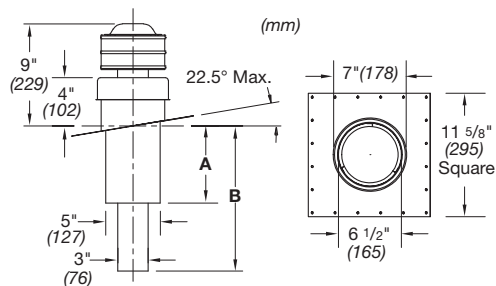
Model Number	A Floor to Flue Conn. in.	B Jacket Dia. in.	C Vent Size in.	D Floor to T&P Conn. in.	E Floor to Gas Conn. in.	F Floor to Top of Heater in.	G Floor to Cold Water Conn. in.	H Depth in.	J Floor to Hot Water Conn. in.	M Water Conn. NPT in.	S Gas Conn. Size in.	Approx. Shipping Weight lbs.
RG2MH30T6X	59 ¹⁵ / ₁₆	18	3 or 4	49 ¹¹ / ₁₆	12 ³ / ₄	56 ³ / ₈	21 ¹³ / ₁₆	21 ⁵ / ₈	57 ⁵ / ₈	3/4	1/2	118
RG2MH40T6X	60 ³ / ₈	20	3 or 4	49 ¹¹ / ₁₆	13 ³ / ₈	56 ¹ / ₄	21 ¹³ / ₁₆	23 ⁵ / ₈	57 ¹³ / ₁₆	3/4	1/2	135

Model Number	A Floor to Flue Conn. mm.	B Jacket Dia. mm.	C Vent Size mm.	D Floor to T&P Conn. mm.	E Floor to Gas Conn. mm.	F Floor to Top of Heater mm.	G Floor to Cold Water Conn. mm.	H Depth mm.	J Floor to Hot Water Conn. mm.	M Water Conn. NPT mm.	S Gas Conn. Size mm.	Approx. Shipping Weight kg.
RG2MH30T6X	1522	457	76 or 102	1262	324	1432	554	549	1464	19	13	54
RG2MH40T6X	1534	508	76 or 102	1262	340	1429	554	600	1468	19	13	61

To order a natural gas heater change suffix "X" to "N". For 10 year models, change suffix from "6" to "10".

* Based on manufacturer's rated recovery efficiency.

Uniform Energy Factor and First Hour Rating is based on the latest AHRI directory listings.



Optional Roof Jack Kits

Part Number	A (in.)	A (mm.)	B (in.)	B (mm.)	Through The Roof Clearance (in.)	Through The Roof Clearance (mm.)
239-37030-01	15"	381	16"-33"	406-838	12"	12"
239-37030-02	33 ¹ / ₂ "	851	33 ¹ / ₂ "-66"	851-1676	18" / 32"	305 / 813
239-37030-03	32 ¹ / ₂ "-62 ¹ / ₂ "	826-1588	37 ¹ / ₂ "-74"	953-1880	32" / 60"	813 / 1524
239-37030-04	50"-98 ¹ / ₂ "	1270-2502	54 ¹ / ₂ "-109 ¹ / ₂ "	1384-2781	48" / 90"	1219 / 2286

(Includes roof jack, hardware, instructions)

General:

Meets NAECA Requirements.

All gas water heaters are certified at 300 PSI (2068 kPa) test pressure and 150 PSI (1034 kPa) working pressure. All water connections are 3/4" NPT (19mm). All gas connections are 1/2" (13mm). All models design-certified by CSA International (formerly AGA/CGA), ANSI Z21.10.1 and peak performance rated. This water heater is designed in accordance with H.U.D and is approved for installation in a manufactured home (mobile home).

Dimensions and specifications subject to change without notice in accordance with our policy of continuous product improvement.

Suitable for Water (Potable) Heating and Space Heating. Toxic chemicals, such as those used for boiler treatment, shall NEVER be introduced into this system. This unit may NEVER be connected to any existing heating system or component(s) previously used with a non-potable water heating appliance.

— BRADFORD WHITE IS —

**AMERICAN
STRONG**

Sales: 800-523-2931 ■ Fax 215-641-1612

24/7 Technical Support: 800-334-3393 ■ Email techserv@bradfordwhite.com

Products made by Bradford White are manufactured in the United States using the finest raw materials and components from around the world.

Built to be the Best