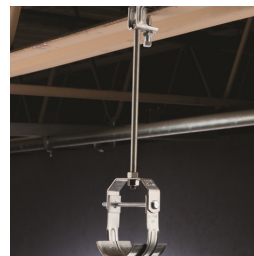
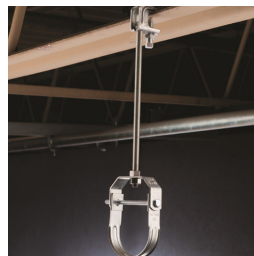
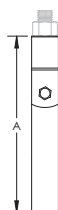
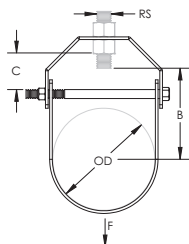


# 401 Clevis Hanger – 4010050EG



- Recommended for the suspension of stationary non-insulated pipe lines
- Flared edges help prevent sharp surfaces from coming into contact with the pipe (1/2" to 2" pipe sizes)
- Clevis bottom pivots to allow pipe to be fed from either direction
- Conforms with U.S. Federal Specification WW-H-171 (Type 1), Manufacturers Standardization Society (MSS) SP-58 (Type 1)



Part Number	4010050EG
Material	Steel
Finish	Electrogalvanized Pregalvanized
Pipe Size	1/2"
Outer Diameter (OD)	0.84"
Rod Size (RS)	3/8"
A	2 5/16"
B	1 1/8"
C	3/8"
Static Load (F)	600 lb
Certifications	cULus
Standard Packaging Quantity	50 pc
UPC	78285636587
EAN-13	8711893089691

A shield is recommended for insulated pipe applications to effectively distribute the load.

UL, UR, cUL, cUR, cULus and cURus are registered certification marks of UL LLC.

## WARNING

nVent products shall be installed and used only as indicated in nVent's product instruction sheets and training materials. Instruction sheets are available at [www.erico.com](http://www.erico.com) and from your nVent customer service representative. Improper installation, misuse, misapplication or other failure to completely follow nVent's instructions and warnings may cause product malfunction, property damage, serious bodily injury and death and/or void your warranty.

© 2019 nVent All rights reserved

nVent, nVent CADDY, nVent ERICO, nVent ERIFLEX and nVent LENTON are owned by nVent or its global affiliates.

All other trademarks are the property of their respective owners. nVent reserves the right to change specifications without prior notice.

