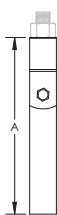
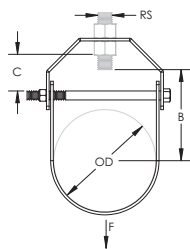


402 Clevis Hanger for Copper Tube, Light Duty – 4020100CP



- Recommended for the suspension of stationary non-insulated copper tube lines
- Conforms with U.S. Federal Specification WW-H-171 (Type 12), Manufacturers Standardization Society (MSS) SP-58 (Type 1)



Part Number	4020100CP
Material	Steel
Finish	Copper Electroplated
Pipe Size	1"
Outer Diameter (OD)	1 1/8"
Rod Size (RS)	3/8"
A	3"
B	1 5/16"
C	9/16"
Static Load (F)	215 lb
Standard Packaging Quantity	50 pc
UPC	78285635579
EAN-13	8711893089301

WARNING

nVent products shall be installed and used only as indicated in nVent's product instruction sheets and training materials. Instruction sheets are available at www.erico.com and from your nVent customer service representative. Improper installation, misuse, misapplication or other failure to completely follow nVent's instructions and warnings may cause product malfunction, property damage, serious bodily injury and death and/or void your warranty.

© 2019 nVent All rights reserved

nVent, nVent CADDY, nVent ERICO, nVent ERIFLEX and nVent LENTON are owned by nVent or its global affiliates.

All other trademarks are the property of their respective owners. nVent reserves the right to change specifications without prior notice.

