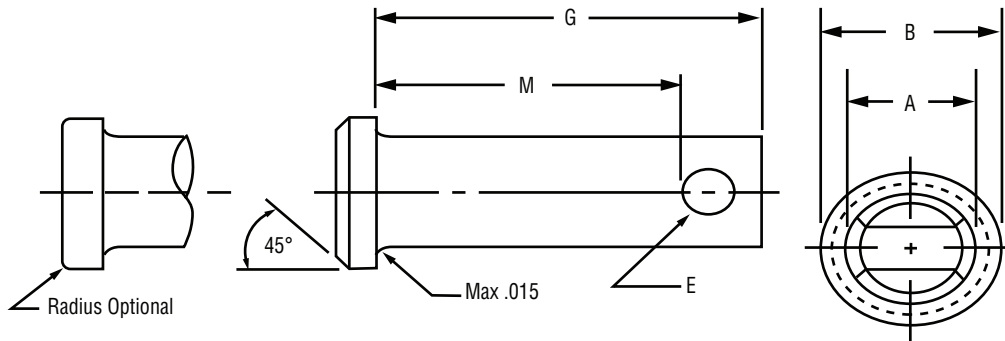




HAIRPIN COTTERS & COTTER PINS

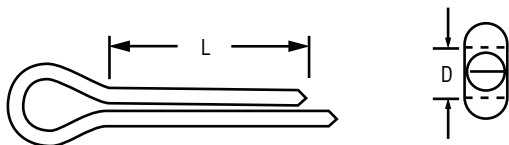
CLEVIS PINS



Available in Plain steel, zinc plated steel, or 18-8 Stainless Steel

Nominal Diameter	Head Diameter	Length	Length to Hole	Hole Diameter	
A	B	G	M	E	
3/16"	.181/.186	.302/.320	*available from 1/2" to 3"	*variable dependent on length	.088/.103
1/4 "	.243/.248	.365/.380	*available from 1/2" to 3-1/2"		.088/.103
5/16"	.306/.311	.432/.444	*available from 1/2" to 3-1/2"		.135/.150
3/8"	.368/.373	.490/.510	*available from 1/2" to 4"		.151/.166
7/16"	.431/.436	.552/.570	*available from 1/2" to 4"		.151/.166
1/2"	.491/.496	.615/.630	*available from 1/2" to 4-1/2"		.151/.166

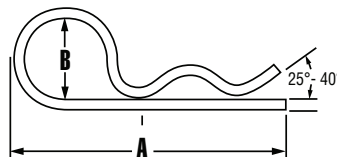
COTTER PINS



"D" Dimension	"L" Dimension
1/32	available from 3/8" to 3/4"
3/64	available from 5/16" to 1-1/2"
1/16	available from 1/4" to 3"
5/64	available from 1/2" to 3"
3/32	available from 1/2" to 3"
7/64	available from 1/2" to 3"
1/8	available from 1/2" to 5"
9/64	available from 3/4" to 4"
5/32	available from 3/4" to 4"
3/16	available from 3/4" to 4"
7/32	available from 1" to 6"
1/4	available from 3/4" to 6"
5/16	available from 1" to 6"
3/8	available from 1-1/2" to 7"
7/16	available from 2" to 6"
1/2	available from 2" to 6"
5/8	available from 3" to 7"
3/4	4"

HAIR PIN COTTERS (Bridge Pins)

Hairpin Cotters are reusable and ideal for quick assembly and disassembly applications. They are available in high quality, zinc plated 1050 spring wire.



Use On Shaft Size	Product Code	Wire Diameter	(A)	(B)
3/16 - 1/4	21-02	0.042	15/16	1/4
5/16 - 3/8	21-04	0.073	1-7/16	3/8
3/8 - 7/16	21-05	0.092	1-7/8	5/8
1/2 - 5/8	21-06	0.120	2-3/8	23/32
5/8 - 3/4	21-07	0.148	2-11/16	25/32
7/8 - 1	21-08	0.178	3-3/4	1-1/32