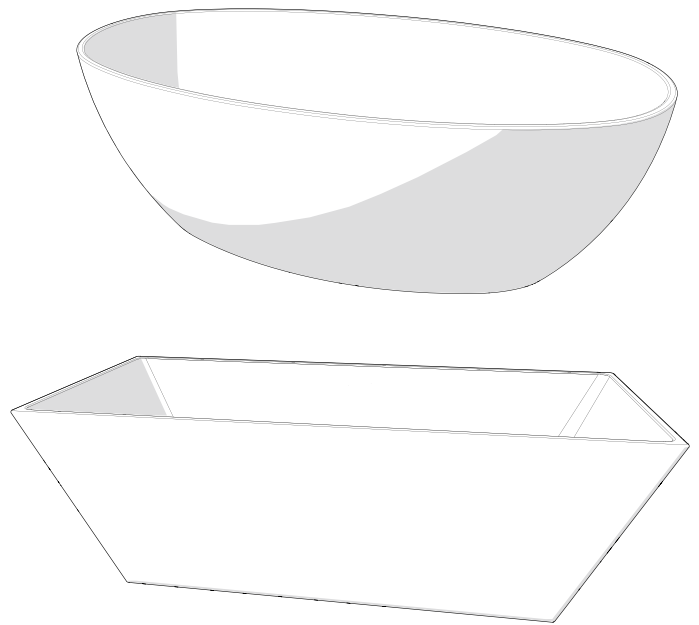




## Freestanding Acrylic Bathing Installation Instructions



READ THESE INSTRUCTIONS COMPLETELY BEFORE INSTALLING THE PRODUCT. FOR PRODUCT OR INSTALLATION QUESTIONS PLEASE CALL CUSTOMER SERVICE AT 1-800-221-3379.

YOU MUST FOLLOW ALL INSTRUCTIONS IN THIS MANUAL: FAILURE TO DO SO WILL RESULT IN YOUR ASSUMPTION OF LIABILITY AND WILL VOID WARRANTY AND CAN RESULT IN PRODUCT DAMAGE OR PERSONAL INJURY.

THIS PRODUCT IS DESIGNED TO BE INSTALLED BY A LICENSED TRADESMAN. LICENSED PLUMBERS SHOULD BE EMPLOYED TO INSURE PROPER INSTALLATION. INSTALLERS ASSUME ALL LIABILITY FOR THE CORRECT INSTALLATION PROCEDURES.

ONLY ACCESSORIES AUTHORIZED BY THE MANUFACTURER SHOULD BE USED WITH THIS PRODUCT. THIS PRODUCT IS DESIGNED FOR RESIDENTIAL USE AND USE BY HEALTHY INDIVIDUALS.

IMPORTANT SAFETY INSTRUCTIONS: WARNING! WHEN USING THIS PRODUCT, BASIC PRECAUTIONS SHOULD ALWAYS BE FOLLOWED. READ AND FOLLOW ALL INSTRUCTIONS PERTAINING TO RISK OF FIRE, ELECTRIC SHOCK, OR INJURY TO PERSONS.

INSTALLER: LEAVE THIS MANUAL FOR HOMEOWNER.  
HOMEOWNER: READ THIS MANUAL AND KEEP FOR FUTURE REFERENCE.

## WARNING

### IMPORTANT SAFETY INSTRUCTIONS

SAVE THIS MANUAL: RETAIN FOR CONSUMER'S USE. READ THESE INSTRUCTIONS COMPLETELY BEFORE INSTALLING THE PRODUCT: FOR PRODUCT OR INSTALLATION QUESTIONS PLEASE CALL CUSTOMER SERVICE AT 1-800-221-3379.

YOU MUST FOLLOW ALL INSTRUCTIONS IN THIS MANUAL: FAILURE TO DO SO WILL RESULT IN YOUR ASSUMPTION OF LIABILITY AND WILL VOID WARRANTY AND CAN RESULT IN PRODUCT DAMAGE OR PERSONAL INJURY. FAILURE TO USE A SUITABLE SETTING COMPOUND WILL VOID THE WARRANTY.

THIS PRODUCT IS DESIGNED TO BE INSTALLED BY A LICENSED TRADESMAN. LICENSED PLUMBERS AND ELECTRICIANS SHOULD BE EMPLOYED TO INSURE PROPER INSTALLATION. INSTALLERS ASSUME ALL LIABILITY FOR THE CORRECT INSTALLATION PROCEDURES.

Only accessories authorized by the manufacturer should be used with this product.

This product is designed for residential use and use by healthy individuals.

## WARNING

WHEN USING THIS PRODUCT, BASIC PRECAUTIONS SHOULD ALWAYS BE FOLLOWED. READ AND FOLLOW ALL INSTRUCTIONS PERTAINING TO RISK OF FIRE, ELECTRIC SHOCK, OR INJURY.

## WARNING

INSTRUCTIONS PERTAINING TO A RISK OF FIRE, ELECTRIC SHOCK OR INJURY TO PERSONS READ AND FOLLOW ALL INSTRUCTIONS!

## WARNING

Risk of personal injury. Do not permit children to use this unit without adult supervision.

## WARNING

Risk of hyperthermia and possible drowning. People using medications and/or having adverse medical history should consult a physician before using this product.

## WARNING

Risk of personal injury. Do not overfill unit before entering. Entering tub when filled more than 2/3 can cause overflow and slippery conditions. Exercise caution when entering and exiting.

## WARNING

No food or alcoholic beverages. Use of your bathtub immediately after meals is not recommended. Avoid alcohol consumption before or during bathing. Alcoholic beverages can cause drowsiness or hyperthermia resulting in loss of consciousness or even drowning.

## WARNING

If you are or think you may be pregnant, consult your physician before using the bathtub.

## WARNING

Never drop or insert any object into any opening. Use this unit only for its intended use as described in this manual. Do not use any attachments not recommended by Mirabelle.

This equipment is intended for indoor use only.

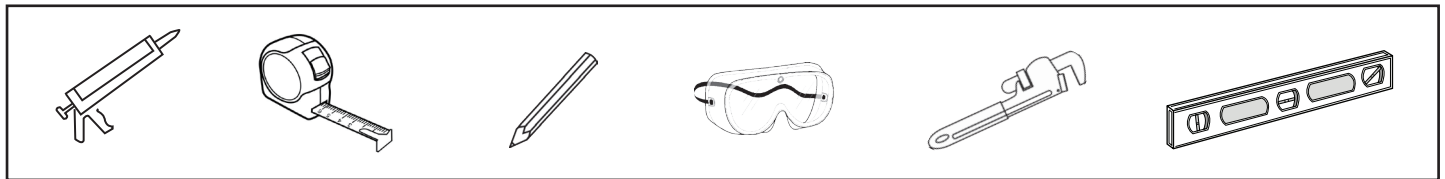
## WARNING

Installer/owner bears all responsibility to comply with all state and local codes when installing this product.

# Before Beginning

- Carefully read the instructions before beginning the installation.
- To protect the unit during installation, we recommend that you lay a piece of cardboard underneath the bathtub.
- Place the unit in the bathroom before you start working. If the unit is covered with a polyethylene protective film, do not remove it until the installation is complete for maximum protection. However, remove film where two surfaces will be in permanent contact.
- It is strongly recommended that this installation be performed by a professional plumber or contractor.
- A minimum of two people are needed to perform this installation.
- The bathtub is designed for a freestanding installation only.
- Provide adequate floor support.

## Recommended Tools and Material



- Silicone sealant
- Tape measure
- Pencil
- Safety glasses

- Pipe wrench
- Level
- Conventional woodworking tools and materials

- Drop cloth

## Inspection and Testing

### Inspection:

- Remove the bath from the carton. Retain the shipping carton until satisfactory inspection of the product has been made. All bath units are factory tested for proper operation prior to shipping.
- Inspect the shell and bathtub components. Should inspection reveal any damage or defect in the finish or visible damage to any components, do not install the bathtub. Damage or defect to the finish claimed after the bathtub is installed is excluded from the warranty.
- Inspect the tub components for loose fittings.

### Testing:

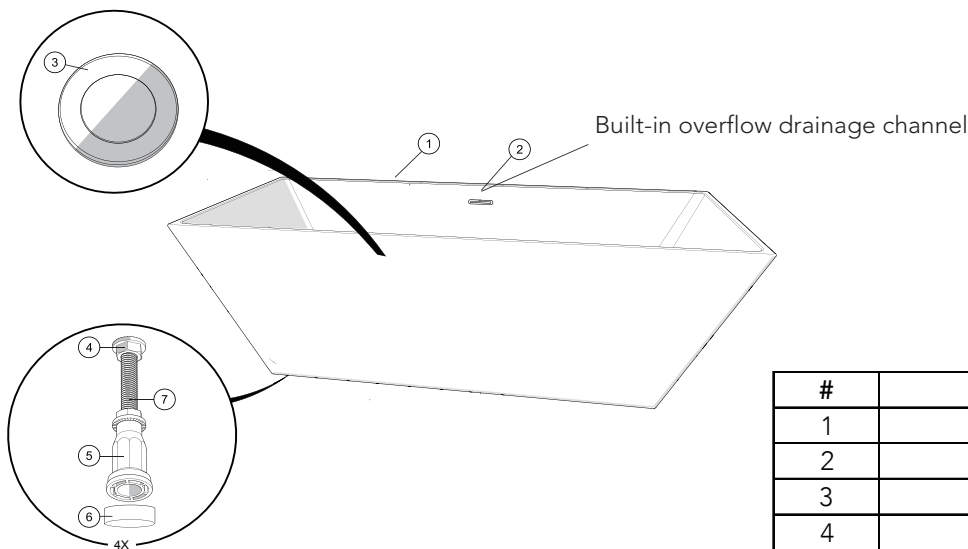
- Prior to installation, the bath must be filled with water and operated to check for leaks that may have resulted from shipping damage or mishandling.
- It is the responsibility of the installer to thoroughly test the tub prior to completing installation. Place the tub on a level surface, ensure drain is sealed and fill the bathtub with water to the bottom of the overflow. Allow water to sit in tub for at least 15 minutes as a static test. Visually inspect all joints for leaks. DO NOT install tub if any leaks are detected.

### DO NOT SIT ON THE LEDGE OF THE BATHTUB

That might cause serious injury. Mirabelle is not responsible for defects and/or problems incurred under these circumstances.



# COMPONENT IDENTIFICATION



#	Part	Qty
1	Bathtub	1
2	Overflow	1
3	Toe Tap Drain	1
4	Hex Locknut	8
5	Adjustable Feet	4
6	Adjustable Feet Cap	4
7	Adjustable Thread	4

## Bathtub Installation

### 1. PLUMBING

Ensure all plumbing and drainage has been installed in the selected location for the tub. Install all plumbing and drainage before securing the unit. It is always recommended to have a competent, professional plumber to do the plumbing installations. Before drilling a hole in the floor for the drainpipe, make sure there are no hidden elements underneath (pipes, floor joists, heating ducts, electrical wires, etc).

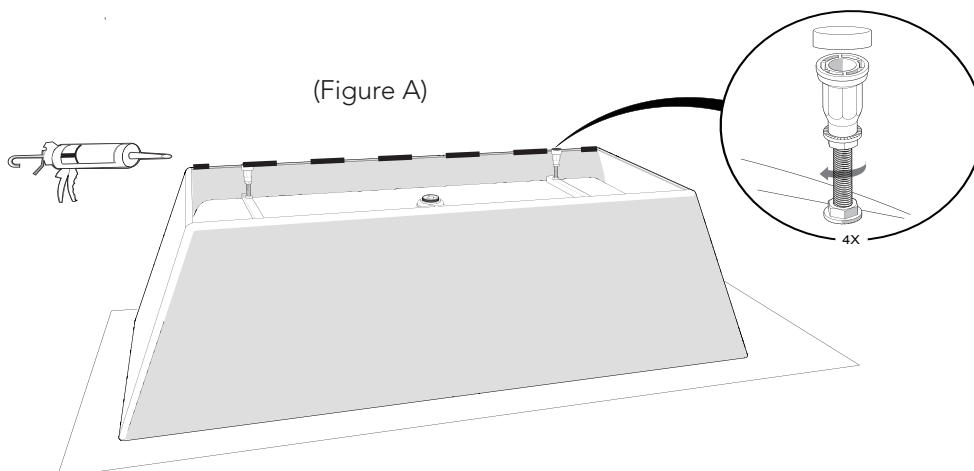
### 2. LEVELING

Once the unit is in position, ensure its level is adjusted in both directions for proper draining. Leveling must be done with the adjustable feet located beneath the unit. Adjust the feet so that they are ¼" [6 mm] above the bottom rim of the bathtub. The bathtub's weight should be supported by the feet, not the rim.

### 3. DRAIN INSTALLATION

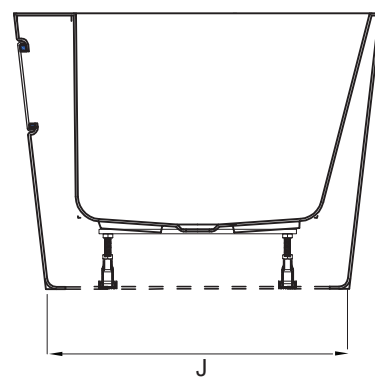
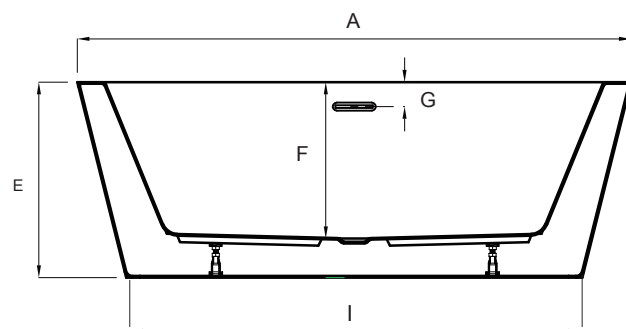
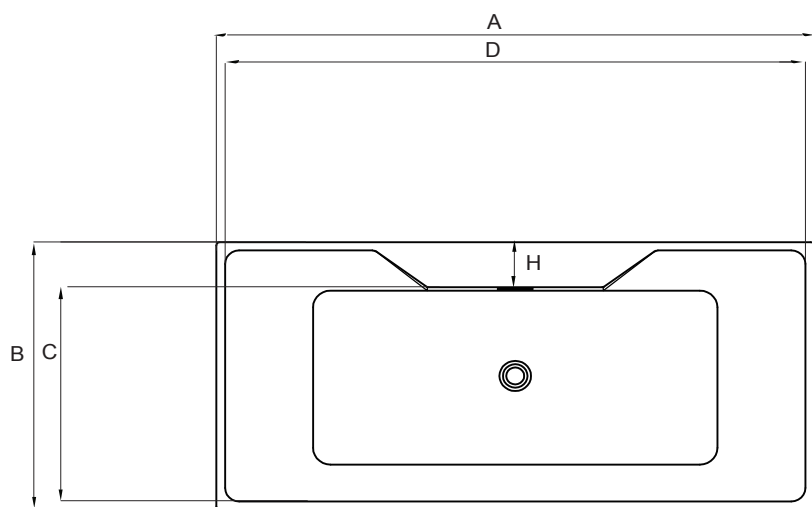
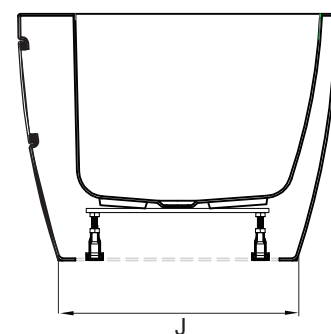
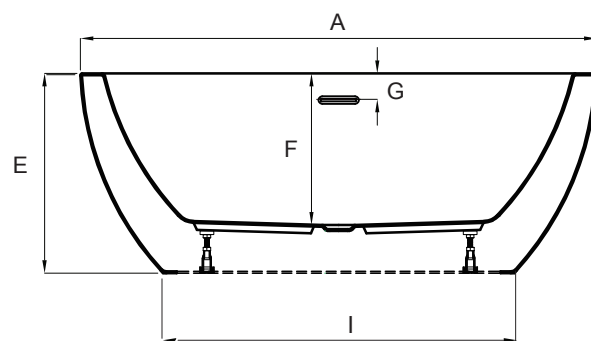
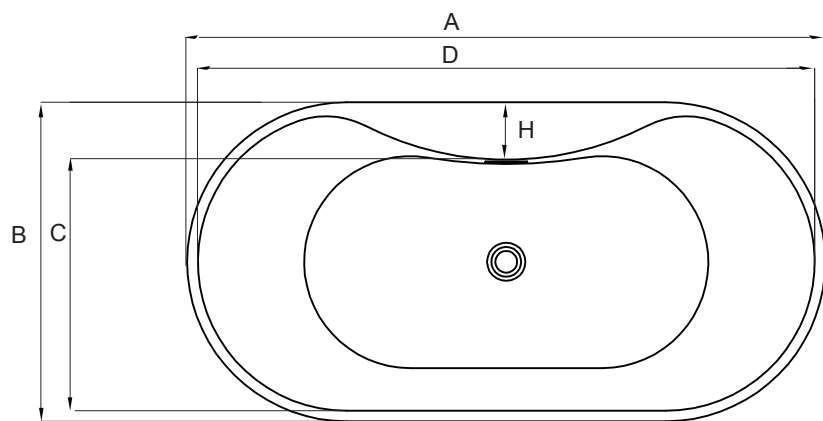
Make sure drain connection is tight / completely installed.

4. Apply silicone to the bottom side of the bathtub. see Figure A



# DIMENSION

Models / Dimension	A	B	C	D	E	F	G	H	I	J
MIRHIFSO5930WH	59"	29-1/2"	23-1/4"	57"	22-3/4"	17-1/4"	3"	5-1/4"	40-1/4"	22"
	(1500mm)	(750mm)	(590mm)	(1450mm)	(580mm)	(440mm)	(75mm)	(135mm)	(1020mm)	(560mm)
MIRHIFSR6731WH	67"	31-1/2"	25-1/4"	65"	23-1/2"	18"	3"	5-1/4"	55"	26"
	(1700mm)	(800mm)	(640mm)	(1650mm)	(600mm)	(460mm)	(75mm)	(135mm)	(1400mm)	(660mm)



## TROUBLESHOOTING

PROBLEM	CAUSES	SOLUTION
Water accumulates around drain	Tub not level	Check to make sure tub is level. Adjust feet as needed.
Bathtub rocks	Tub not sitting firmly on its base	Adjust feet so all 4 feet make contact with the floor at once. Important to keep the tub level if necessary. Check that floor is a level surface.

## CARE & CLEANING

Below are the recommended procedures for cleaning:

DO NOT use powdered cleaners unless cleaner is fully dissolved in water.

Fill the tub 1/4 of the way with hot water and add 2-3 teaspoons of low foaming detergent such as dish washing machine detergent.

DO NOT use full strength bleach or ammonia cleaning solutions. Chemically active cleaning solution can damage the bath surface.

DO NOT USE ABRASIVE CLEANERS as they will scratch and dull the surface of the acrylic and void the consumer warranty.

DO NOT USE METAL SCRAPERS, WIRE BRUSHES OR OTHER HARSH ABRASIVE TOOLS.

Usually a mild detergent will remove construction debris. More stubborn debris may be removed with denatured alcohol, or Clorox Soft Scrub® cleaner. Light scratches and dulled areas may be restored to original luster by rubbing with an automotive type cleaning compound such as DuPont White Polishing Compound®.

Note: To restore dull or scratched units: Apply white automotive polishing with a clean rag. Rub scratches and dull areas vigorously. Wipe off residue. Follow with a coat of white automotive paste wax.

DO NOT wax areas where you walk or stand.

For crack and major surface damage, call customer service at 1-800-221-3379 for repair recommendations.

## FIVE-YEAR LIMITED WARRANTY

WHAT IS COVERED? Mirabelle warrants to the ORIGINAL CONSUMER PURCHASER that its bathtub and bathing system (except as explained under paragraph 3, below) shall be free from defects in material and workmanship under normal use and service FOR FIVE (5) YEARS. If the bathtub and bathing system is used in industrial, commercial or business applications, the preceding sentence does not apply, but rather FOR ALL INDUSTRIAL, COMMERCIAL OR BUSINESS APPLICATIONS, THE WARRANTY SHALL BE A ONE (1) YEAR LIMITED WARRANTY FROM THE DATE OF PURCHASE WITH ALL OTHER TERMS AND EXCLUSIONS OF THE WARRANTY APPLICABLE. MIRABELLE'S OBLIGATIONS Mirabelle's obligations under the warranty set forth in paragraph 1 above shall be to replace free of charge any Mirabelle bathtub and bathing system which is defective as stated above, or at Mirabelle's option, to either refund the purchase price or repair the bathtub and bathing system. THE WARRANTY SET FORTH IN PARAGRAPH 1 IS IN LIEU OF ANY OTHER WARRANTY, EXPRESSED OR IMPLIED, AND SHALL RUN TO THE ORIGINAL PURCHASER ONLY. WHAT IS NOT COVERED? The warranty set forth in paragraph 1 does not cover and Mirabelle is not liable for, (i) installation, (ii) any labor charges or (iii) products which have been damaged as a result of any accident, misuse, abuse, neglect, improper installation or maintenance, the use of abrasive or organic solvent cleaners, modification, failure to use the bathtub and bathing system in accordance with instructions provided by Mirabelle or use of parts other than Mirabelle parts. HOW TO OBTAIN WARRANTY SERVICE The purchaser should contact their local Ferguson location, installing contractor or builder from whom the product was purchased or call Mirabelle customer service at 800-221-3379. DISCLAIMER OF CONSEQUENTIAL OR INCIDENTAL DAMAGES AND OTHER WARRANTIES MIRABELLE SHALL NOT BE LIABLE FOR PERSONAL INJURY OR PROPERTY DAMAGE OR ANY CONSEQUENTIAL, PUNITIVE OR INCIDENTAL DAMAGES. EXCEPT AS STATED IN PARAGRAPH 1, MIRABELLE DISCLAIMS ALL EXPRESSED OR IMPLIED WARRANTIES, INCLUDING THOSE OF MERCHANTABILITY AND FITNESS FOR A PARTICULAR PURPOSE. MIRABELLE'S LIABILITY, IF ANY, SHALL NOT EXCEED THE REPLACEMENT VALUE OF THE DEFECTIVE bathtub and bathing system. Some states do not allow the exclusion or limitation of incidental or consequential damages or limitations on how long an implied warranty lasts, so the above limitations may not apply to you. This warranty gives you specific legal rights and you may also have other rights, which vary from state to state. PLEASE PAY ATTENTION TO FOLLOWING WHEN MAINTAINING YOUR BATHTUB. FAILING TO DO SO WILL VOID THE WARRANTY: • Improper care & cleaning. • The use of bath oils and bath salts will void the warranty. • The use of abrasive cleaners, metal scrapers, wire brushes or other harsh abrasive tools. • Inappropriate installation and maintenance will void the warranty. Contact Mirabelle Customer Service at 800-221-3379 or email [MirabelleProducts.CustomerSupport@Ferguson.com](mailto:MirabelleProducts.CustomerSupport@Ferguson.com)