

Finish Line™

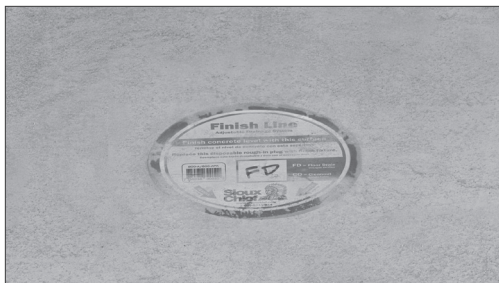
Adjustable Flashing Drain

Patent #7,735,512

Installing the Finish Line



Set Drain



Pour Concrete Flush with Plug



Remove Coring Plug



Install Finish Fixture



A Perfect Finish

The Finish Line™ allows for adjustment of the drain AFTER the pour. Achieve a perfect finish for every drain every time.



Finish Fixture



Coring Plug

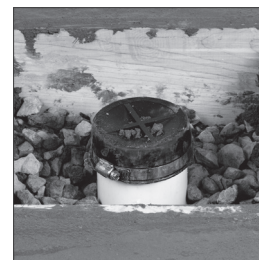
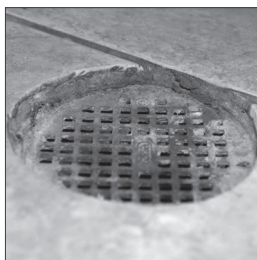


Coring Sleeve

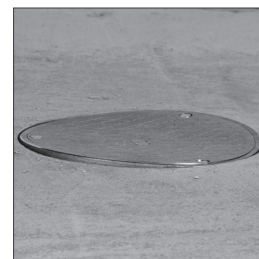
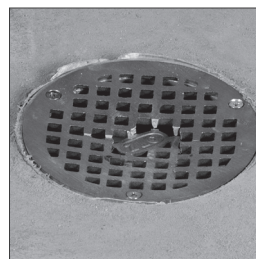


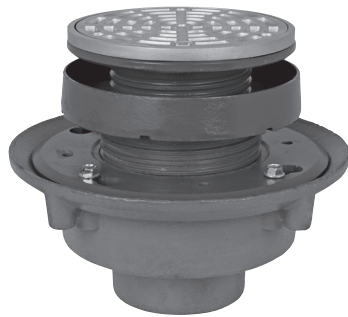
Base Adapter

Eliminate drains set too high or too low.
Stop wrapping threads and boxing out.



Eliminate finish fixture damage by
keeping them off the job during construction.





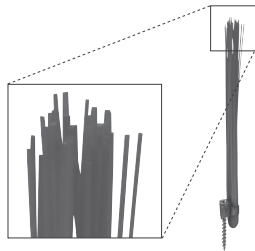
833-235DSR



832-S3



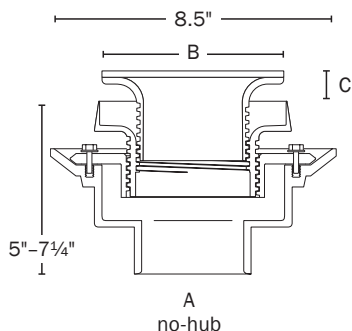
863-FA



832-W
Locating bristles



832-3HHD



Finish Line™

Adjustable Flashing Drain Cast Iron No-Hub Connection Ductile on Cast – Small Head

- Adjustable AFTER the pour
- Cast iron base adapter with ductile iron clamping collar, coring sleeve, head adapter and poly coring plug
- Nickel bronze and stainless steel strainers for use in pedestrian traffic areas

Options: Add letter suffix. Add price to list.

V	Vandal-resistant screws	\$5.00
B	Complies with Buy American Act ¹	\$47.50
E	Extended ring ¹	\$60.00

¹ Only available for round nickel bronze ring & strainer.

Item No	Ring & Strainer	Dimensions			Pkg	Min Qty	Case Qty
		A	B	C			
ROUGH-IN DRAIN							
833-225DF	(Coring plug)	2"	—	—	B*	1	1
833-235DF	(Coring plug)	3"	—	—	B*	1	1
FINISH FIXTURE							
832-3DHNQ	Round nickel bronze	—	5½"	—	B*	1	1
832-3DHNQ	Square nickel bronze	—	5⅞"	—	B*	1	1
832-3DHSR	Round 304 stainless	—	5½"	—	B*	1	1
832-3DHSQ	Square 304 stainless	—	5⅞"	—	B*	1	1
COMPLETE ASSEMBLY							
833-225DNR	Round nickel bronze	2"	5½"	0-1¼"	B*	1	1
833-225DNQ	Square nickel bronze	2"	5⅞"	5/16"-1¼"	B*	1	1
833-225DSR	Round 304 stainless	2"	5½"	0-1¼"	B*	1	1
833-225DSQ	Square 304 stainless	2"	5⅞"	5/16"-1¼"	B*	1	1
833-235DNR	Round nickel bronze	3"	5½"	0-1¼"	B*	1	1
833-235DNQ	Square nickel bronze	3"	5⅞"	5/16"-1¼"	B*	1	1
833-235DSR	Round 304 stainless	3"	5½"	0-1¼"	B*	1	1
833-235DSQ	Square 304 stainless	3"	5⅞"	5/16"-1¼"	B*	1	1
ACCESSORIES							
832-3HHD	Hub drain finish fixture, ABS/PVC				B*	1	10
863-FA	Round aluminum condensate funnel with screws				B*	1	5
863-FN	Round ni-brnz condensate funnel with screws				B*	1	5
832-S3	Two adjustment shims, two ¾" screws				B*	1	10
832-W	Flexible red locating bristles with screw				B*	1	10

NEW